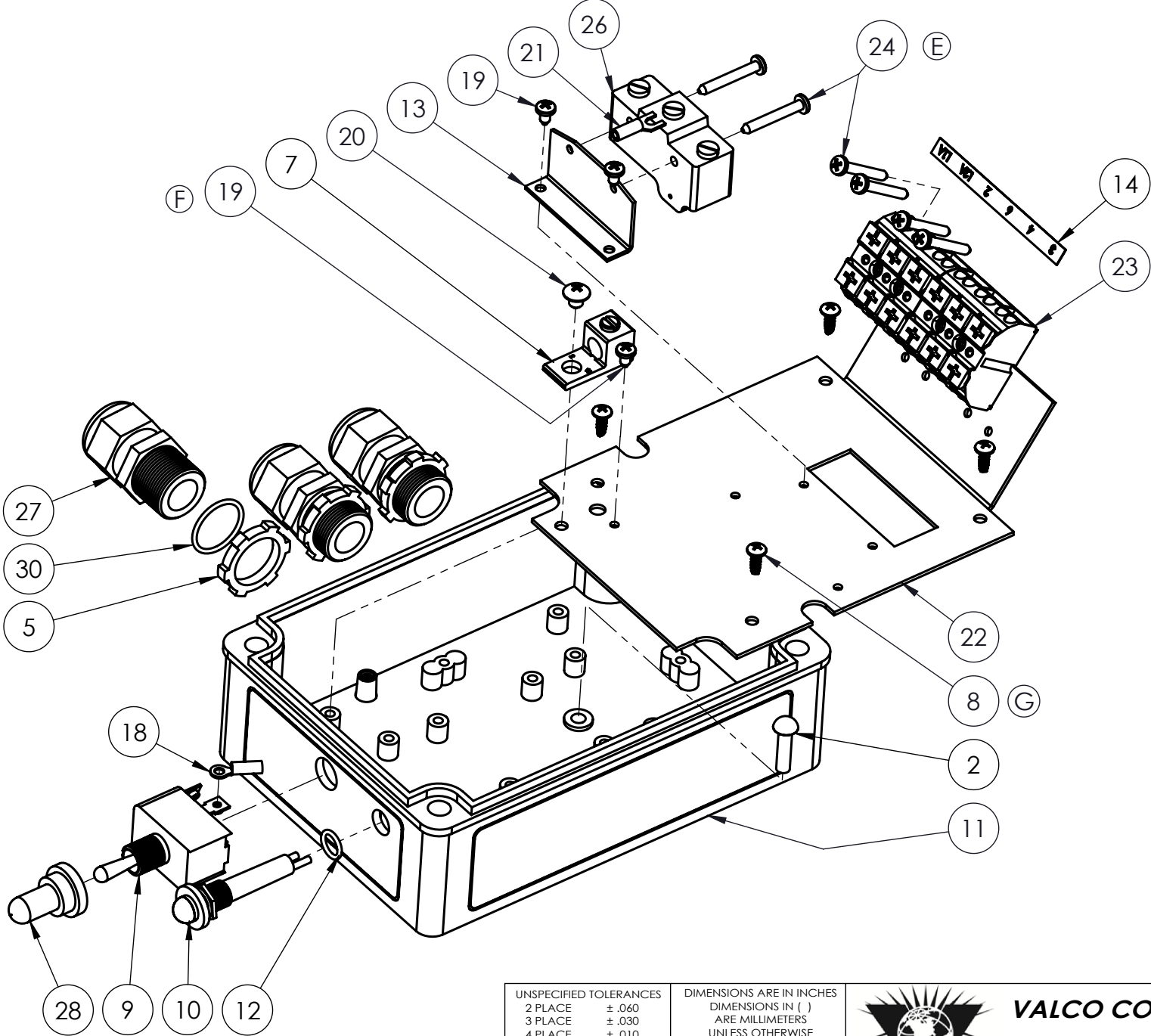


BILL OF MATERIALS			
ITEM #	PART #	QTY	DESCRIPTION
1	010764	1	BAG, PLASTIC 4" X 8"
2	011165	1	RIVET, DOMED HD 3/16OD X 3/4L
3	412392	1	WIRE LABEL (3)
4	412394	1	WIRE LABEL (5)
5	420473	3	1/2" CONDUIT NUT
6	450415	1	DANGER DECAL - HIGH VOLTAGE
7	450484	1	GROUND BLOCK
8	690364	4	SCREW, #6-19 X 3/8 PPHMS ZP
9	723424	1	TOGGLE SWITCH, DPST 10A 250V
10	730043	1	INDICATOR LIGHT, RED 250V,1/2W
11	730453	1	ENCLOSURE ASSY, DH CONTROL BOX
12	730502	1	O-RING, 3/8ID X 1/2OD, BUNA-N
13	730503	1	BRACKET, MICRO SWITCH, DH
14	730504	1	LABEL, TERMINAL STRIP, DH
15	730505-SCHEM	1	WIRING SCHEMATIC, DH NO RELAY
16	730505-WIRE	1	WIRING DIAGRAM, DH NO RELAY
17	730512	1	LABEL, WIRE SCHEM, DH
18	730513	4	TERMINAL, RING, 16-14AWG, #6
19	730514	3	SCREW, 6-32 X 1/4 PPH TRS ZP
20	730516	1	SCREW, 10-32 X 1/4 PPH TRS ZP
21	730521	3	TERMINAL, SPADE, 16-14AWG, #6
22	730527	1	MOUNTING PLATE, DH CONTROL BOX
23	730528	2	TERM BLK, 3POLE, 300V, 20A
24	730558	6	SCREW, 6-32 X 1" PPH TRS ZP
25	730879	1	5" X 5" X 8" CARTON
26	730989	1	MICRO SWITCH, SPDT 20A 250VAC
27	750030	3	STRAIGHT-THRU GROMMET
28	750657	1	BOOT, TOGGLE SWITCH, GRAY
29	921131	1	730505 CSA ID LABEL
30	HW-71-204	3	O-RING, 11/16 ID, 13/16 OD
31	SPE-000-1039	2.083	WIRE, 14AWG, STRANDED, BLACK

NOTES:

1. ENCLOSURE LID AND DECALS SHOWN ON SHEET 2
2. DISCARD O-RING FOR 730043 AND REPLACE WITH 730502
- ③ 3. WIRE LABELS NOT SHOWN (SEE 730501-WIRE FOR DETAILS). USE THE [2] PROVIDED WIRE LABEL DECALS FOR THE INDICATOR LIGHT WIRES. ALL OTHER WIRE LABELS SHOULD BE PLACED WITH WIRE MACHINE.
4. PLACE 750030 (3), HW-71-204 (3), 420473 (3), 730505-SCHEM, 730505-WIRE IN BAG 010764



REV	ECN#	DESCRIPTION	DATE	BY
A	11351	ADDED WIRING DRAWINGS AND LABELS TO BOM, 730513 WAS 450462	8/20/2012	BAC
B	11426	ADDED 010764, 012731, 412390, 412391, 412392, 412393, 412394, 730514, 730516, 730517, 730518, 730519, 730521, 730879 REMOVED 011135, 011136, 450462, SPE-000-1039 QTY WAS 3	10/2/2012	TDW
C	11638	CHANGED 730456 TO 730528 (QTY 2), 730454 TO 730527, SPE-000-1039 QTY WAS 2', REMOVED 011140, 012731	1/3/2013	BAC
D	11725	PRODUCT RELEASE, SPE-000-1039 WAS QTY 3	2/12/2013	BAC
E	13201	730558 1" LONG SCREW WAS 730517 7/8" LONG SCREW	9/15/2015	LRA
F	13786	ADDED (1) MISSING 730514 SCREW TO BOM AND ASSEMBLY	3/8/2017	EMR
G	14132	REMOVED WIRE LABELS 412390, 412391, 412393, 412395, 730518, 730519. CHANGED QUANTITY [1] 412392 WAS [2]. ADDED WIRE MACHINE NOTE. [4] 690364 WAS [4] 011380	1/22/2018	LRA

UNSPECIFIED TOLERANCES	
2 PLACE	± .060
3 PLACE	± .030
4 PLACE	± .010
HOLE DIA.	± .010
ANGULAR	± 1°

This drawing and any print thereof is the property of VALCO COMPANIES INC. and is subject to return on request by this company. The information shown is confidential and the recipient by accepting this drawing agrees not to use any information contained thereon in any manner which will be detrimental to VALCO COMPANIES INC.

DIMENSIONS ARE IN INCHES DIMENSIONS IN () ARE MILLIMETERS UNLESS OTHERWISE SPECIFIED. DO NOT SCALE	
DATE	1/17/12
DRAWN	TDW
CHECK	
WEIGHT	2.2
SCALE	1:2



VALCO COMPANIES, INC.

PO BOX 8
NEW HOLLAND, PA 17557

DESCRIPTION 1

CONTROL BOX, DH NO RELAY

DESCRIPTION 2

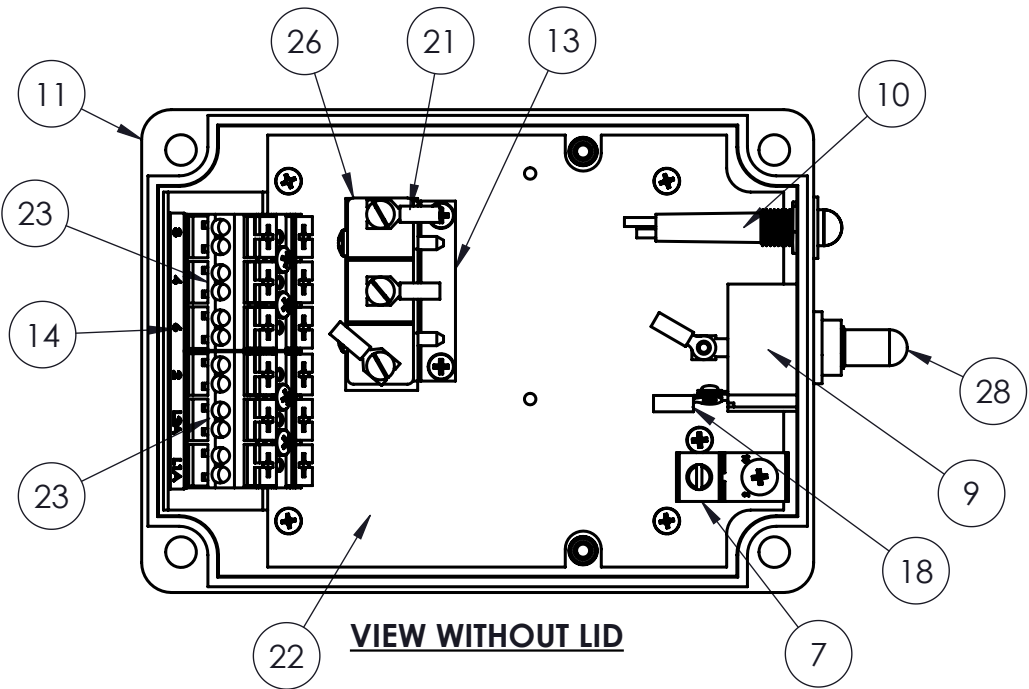
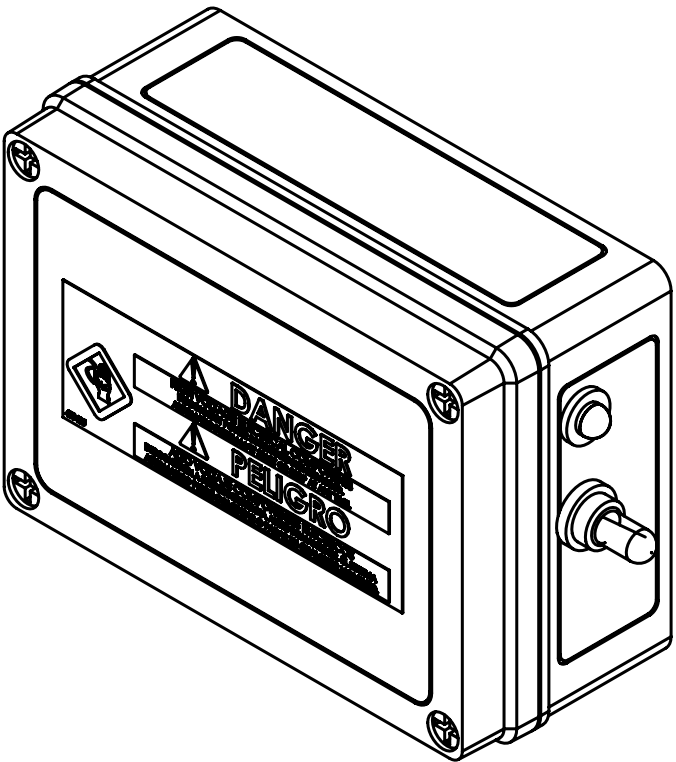
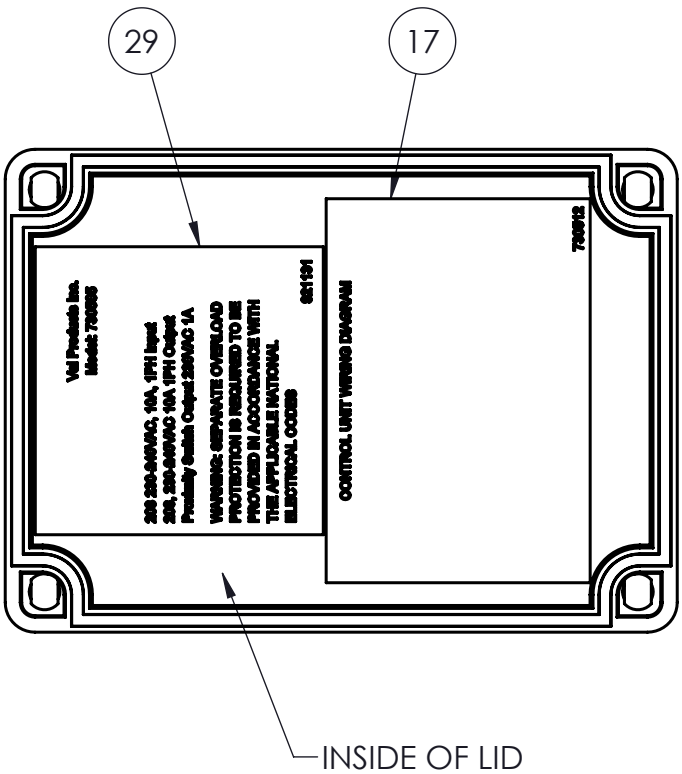
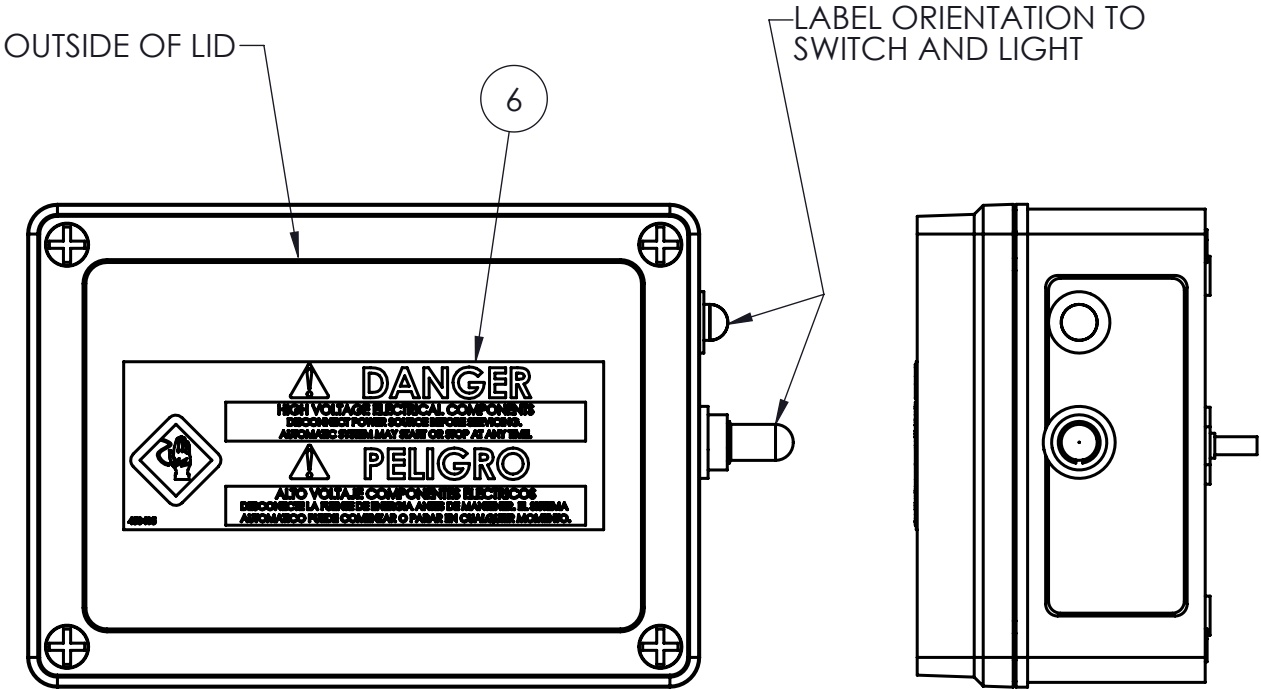
SHEET 1 OF 2

730505

REV.
G

730505
SHEET 2
REV. G

REV	ECN#	DESCRIPTION	DATE	BY
-	See Sheet1	See Sheet1	-	See Sheet1



UNSPECIFIED TOLERANCES	
2 PLACE	± .060
3 PLACE	± .030
4 PLACE	± .010
HOLE DIA.	± .010
ANGULAR	± 1°

This drawing and any print thereof is the property of VALCO COMPANIES INC. and is subject to return on request by this company. The information shown is confidential and the recipient by accepting this drawing agrees not to use any information contained thereon in any manner which will be detrimental to VALCO COMPANIES INC.

DIMENSIONS ARE IN INCHES	
DIMENSIONS IN ()	ARE MILLIMETERS
UNLESS OTHERWISE SPECIFIED,	DO NOT SCALE

DATE	1/17/12
DRAWN	TDW
CHECK	
WEIGHT	2.2
SCALE	1:2



VALCO COMPANIES, INC.

PO BOX 8
NEW HOLLAND, PA 17557

DESCRIPTION 1 CONTROL BOX, DH NO RELAY

DESCRIPTION 2

SHEET 2 OF 2

730505

REV. G