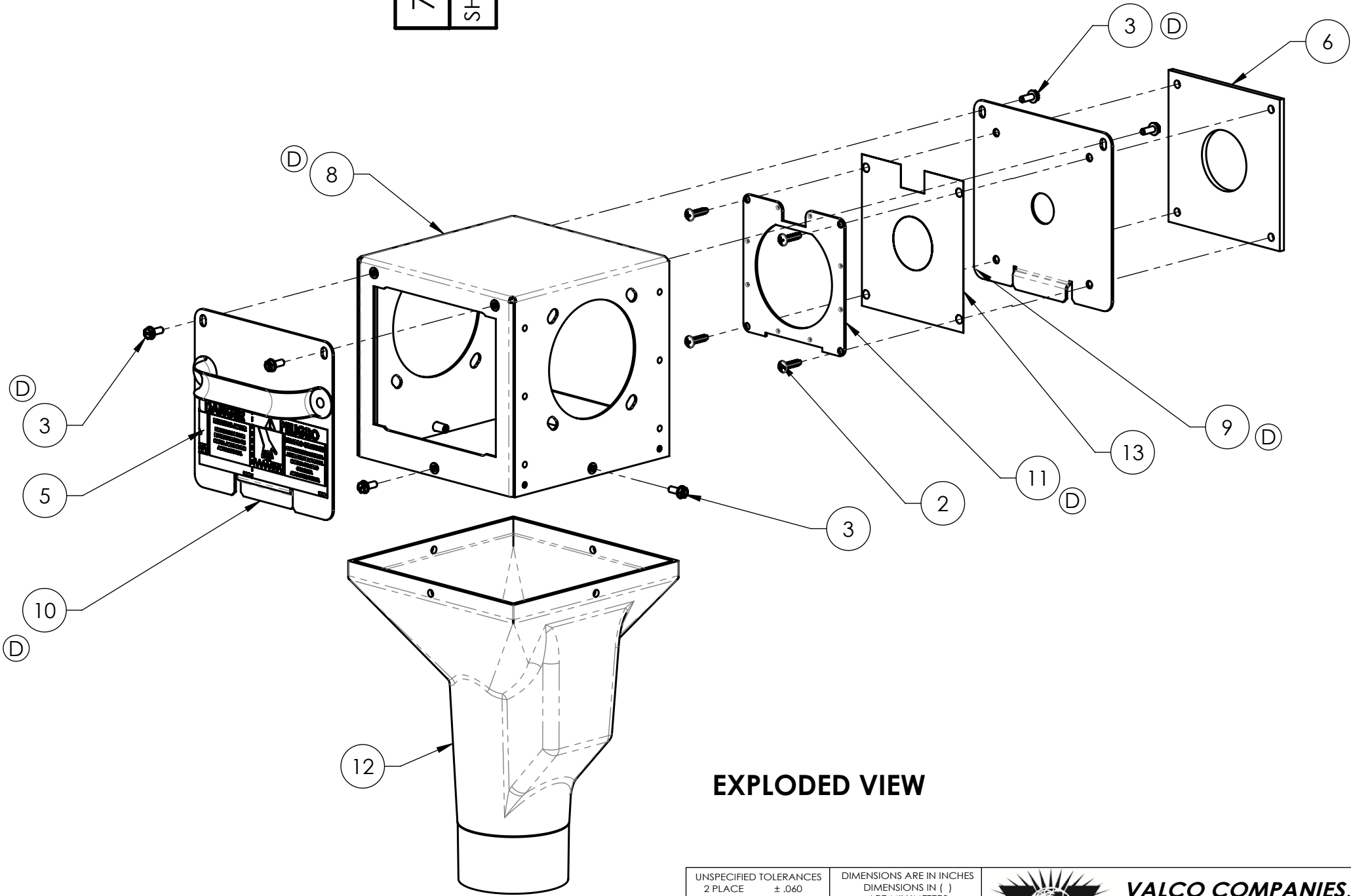
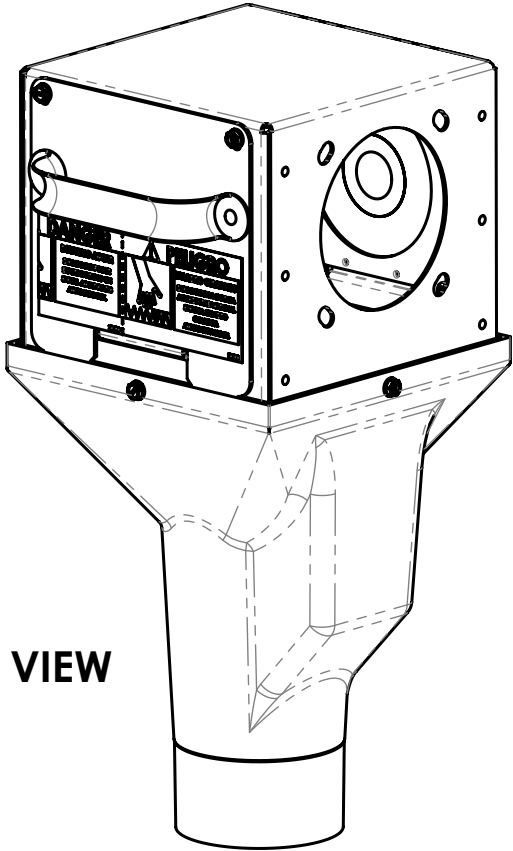


BILL OF MATERIALS			
ITEM #	PART #	QTY	DESCRIPTION
1	010766	1	6" X 12" PLASTIC BAG
2	011382	4	#10-24 x 3/4" SELF TAPPING
3	012675	8	#10-24 X 1/2" HEX LOCKING
4	713468	1	CARTON, 17-1/4" X 9" X 10"
5	723402	1	"DANGER" DECAL
6	730046	1	GASKET, DISCHARGE HEAD
7	730472	1	730462 PKG. LIST
8	730569	1	DISCHARGE HEAD HOUSING
9	730570	1	ENCLOSURE MOUNTING PLATE
10	730572	1	ACCESS DOOR ASSY
11	730573	1	DIAPHRAGM RETAINER
12	730634	1	PLASTIC FUNNEL
13	730765	1	CONTACT ASSEMBLY
14	990190	1	FILL SYSTEM MANUAL

NOTE: NOT ALL ITEMS IN ASSEMBLY ARE SHOWN, INCLUDING:

- 010766 PLASTIC BAG
- 713468 CARTON
- 730472 PACKING LIST
- 990190 FILL SYSTEM MANUAL


ASSEMBLED VIEW



EXPLODED VIEW

REV	ECN#	DESCRIPTION	DATE	BY
A	3554	UPDATE 730276 & ADDED 011382	10/17/06	DSB
B	13747	SOLIDWORKS DRAWING RELEASE, ADD MISSING BOM ITEMS	2/7/17	TRC
C	14173	990190 FILL SYSTEM MANUAL WAS 000096	3/1/2018	LRA
D	11325	730569 WAS 730001, 730570 WAS 730466, 730572 WAS 730039, 730573 WAS 730276.	9/28/2018	LRA

730462	REV. D
SHEET 1	

UNSPECIFIED TOLERANCES 2 PLACE ± .060 3 PLACE ± .030 4 PLACE ± .010 HOLE DIA. ± .010 ANGULAR ± 1°		DIMENSIONS ARE IN INCHES DIMENSIONS IN () ARE MILLIMETERS UNLESS OTHERWISE SPECIFIED. DO NOT SCALE		 VALCO COMPANIES, INC. PO BOX 8 NEW HOLLAND, PA 17557	
DATE 5/3/12		DRAWN TDW		DESCRIPTION 1 STEEL DISCHARGE HEAD - BASIC	
CHECK -		WEIGHT 5.8		DESCRIPTION 2	
SCALE 1:4		SHEET 1 OF 1		730462	
This drawing and any print thereof is the property of VALCO COMPANIES INC. and is subject to return on request by this company. The information shown is confidential and the recipient by accepting this drawing agrees not to use any information contained thereon in any manner which will be detrimental to VALCO COMPANIES INC.				REV. D	