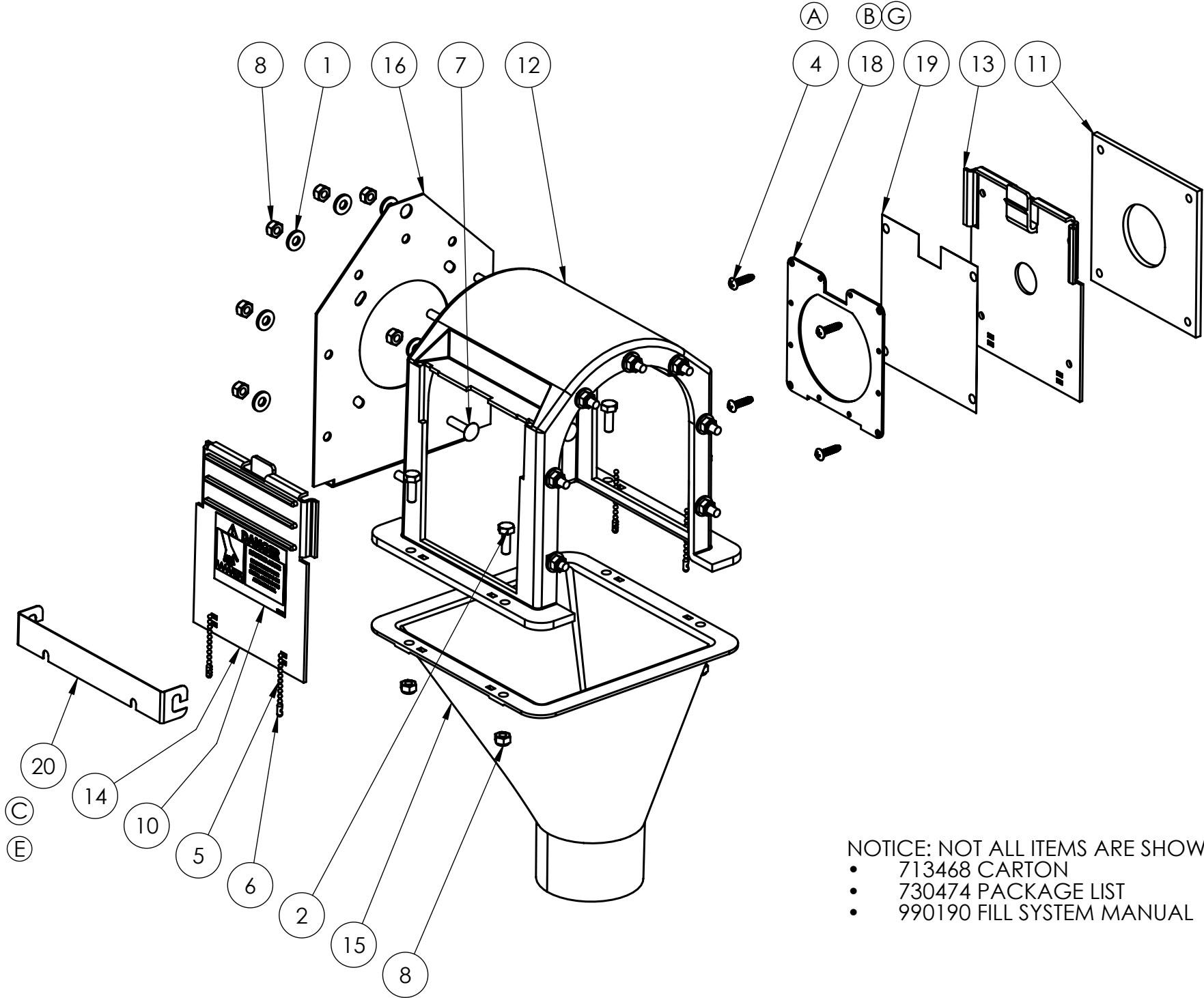


BILL OF MATERIALS			
ITEM #	PART #	QTY	DESCRIPTION
1	010424	14	WASHER, FLAT, 1/4" SAE ZP
2	010617	4	BOLT, 1/4"-20 X 3/4" LG HCS ZP
3	010766	1	6" X 12" PLASTIC BAG
4	011382	4	#10-24 x 3/4" SELF TAPPING
5	011431	2.5	#6 BALL CHAIN
6	011432	4	#6 BALL CHAIN CONNECTOR
7	011434	14	1/4" x 1" CARRIAGE BOLT
8	012793	18	NUT, HEX LOCK 1/4-20 ZP
9	713468	1	CARTON, 17-1/4" X 9" X 10"
10	723402	1	"DANGER" DECAL
11	730046	1	GASKET, DISCHARGE HEAD
12	730267	1	POLY DISCHARGE HEAD
13	730271	1	POLY ELECTRIC BOX MOUNT
14	730272	1	POLY ACCESS DOOR
15	730273	1	POLY FUNNEL
16	730274	1	GEARBOX MOUNT
17	730474	1	730463 PKG. LIST
18	730573	1	DIAPHRAGM RETAINER
19	730765	1	CONTACT ASSEMBLY
20	730783	1	POLY FLAG HOPPER DOOR STRAP
21	990190	1	FILL SYSTEM MANUAL




ASSEMBLY INSTRUCTIONS:

EXPLODED VIEW SHOWN FOR REFERENCE ONLY.

1. ASSEMBLE 730274 PLATE TO 730267 HOUSING WITH (7) EA 011434 CRG BOLTS, 010424 WASHERS, AND 012793 LOCKNUTS.
2. ASSEMBLE 730273 FUNNEL TO BOTTOM OF 730267 HOUSING WITH (4) 010617 BOLTS AND 012793 LOCKNUTS.
3. CUT 011431 CHAIN TO (4) 7.5" PCS. AND PLACE 011432 CONNECTOR ON EACH END.
4. SLIP (2) CHAINS INTO 730272 DOOR AND (2) CHAINS IN 730271 DOOR. THEN SLIP CHAIN THRU RECTANGULAR HOLES IN HOUSING AND FUNNEL AND CONNECT CHAINS. ASSEMBLE DOORS TO HOUSING.
5. PLACE 730046 GASKET, 730765 DIAPHRAGM, 730276 RETAINER, 730783 STRAP, (4) 011382 SCREWS, (7) 011434 BOLTS, (7) 010424 WASHERS, AND (7) 012793 LOCKNUTS INTO 010766 BAG.
6. PLACE ALL COMPONENTS INTO CARTON AND SEAL.

NOTICE: NOT ALL ITEMS ARE SHOWN:
• 713468 CARTON
• 730474 PACKAGE LIST
• 990190 FILL SYSTEM MANUAL

G	11325	730573 WAS 730276	9/28/2018	LRA
F	14173	990190 FILL SYSTEM MANUAL WAS 000096	3/1/2018	LRA
E	13547	REMOVED (1) 730783, WAS (2)	6/17/16	LRA
D	11188	REMOVED 730473 ID LABEL	6/19/12	NMH
C	10680	ADDED (2) 730783	8/31/11	RMS
B	3554	UPDATED 730276	10/17/06	DSB
A	3534	REPLACE 410634 WITH 011382	10/2/06	DSB
-	3414	RELEASE	4/20/06	DSB
REV	ECN#	DESCRIPTION	DATE	BY

UNSPECIFIED TOLERANCES 2 PLACE ± .060 3 PLACE ± .030 4 PLACE ± .010 HOLE DIA. ± .010 ANGULAR ± 1°		DIMENSIONS ARE IN INCHES DIMENSIONS IN () ARE MILLIMETERS UNLESS OTHERWISE SPECIFIED. DO NOT SCALE		 VALCO COMPANIES, INC. PO BOX 8 NEW HOLLAND, PA 17557	
This drawing and any print thereof is the property of VALCO COMPANIES INC. and is subject to return on request by this company. The information shown is confidential and the recipient by accepting this drawing agrees not to use any information contained thereon in any manner which will be detrimental to VALCO COMPANIES INC.		DATE 3/1/2018		DESCRIPTION 1 POLY DISCHARGE HEAD - BASIC	
		DRAWN LRA		DESCRIPTION 2 -	
		CHECK -			
		WEIGHT 5.4			
		SCALE 1:4		SHEET 1 OF 1	
				730463	
				REV. G	