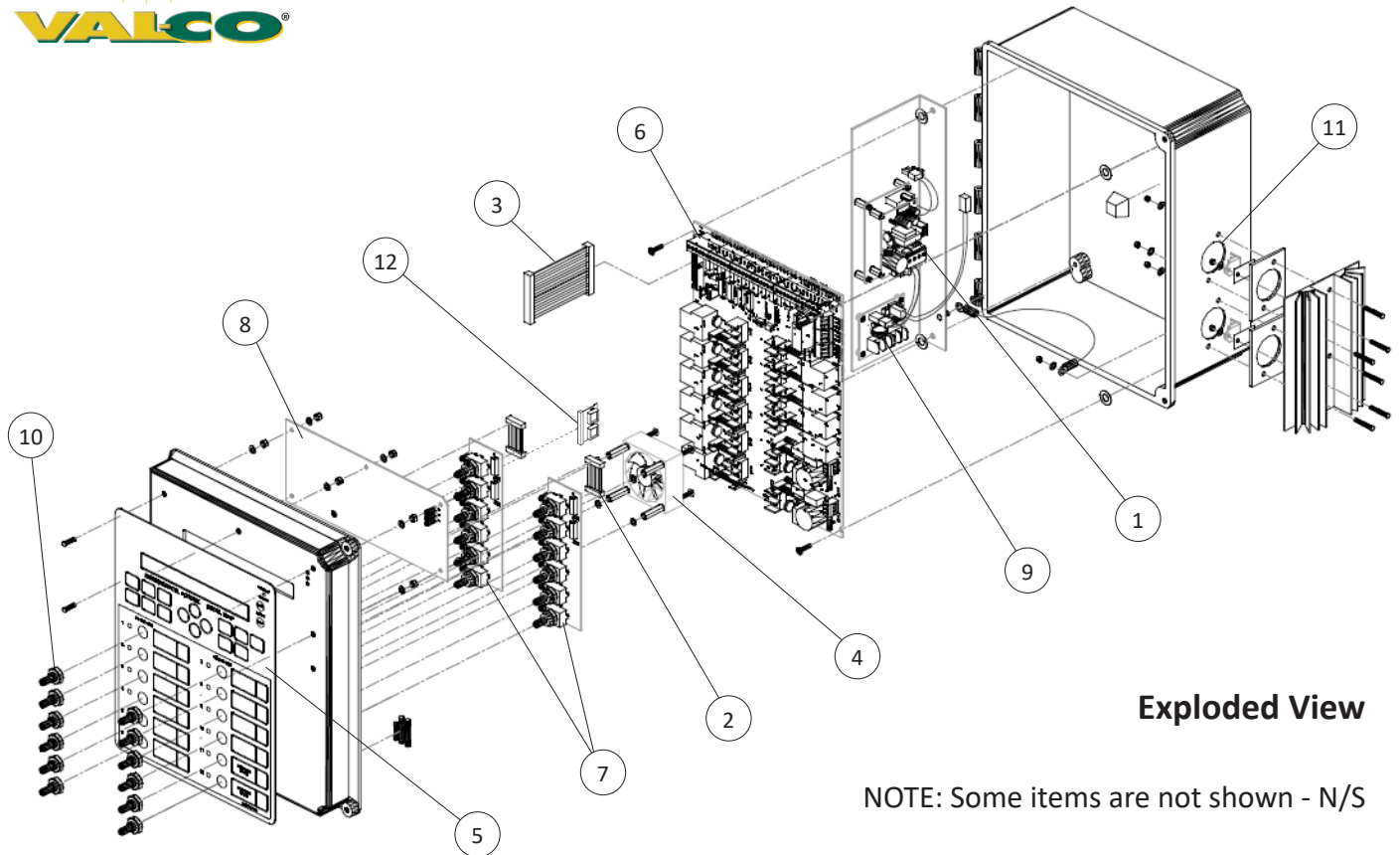




Ventra Plus 1200 ZPVS/ZP

Repair Parts / Quick Sheet



Exploded View

NOTE: Some items are not shown - N/S

KEY	PART#	DESCRIPTION	QTY
1	921490	UNIVERSAL POWER SUPPLY - 25 WATT	1
2	CA-031-406	10 CONDUCTOR RIBBON CABLE	2
3	CA-036-408	40 CONDUCTOR RIBBON CABLE	1
4	FN-002-100	FAN ASSEMBLY	1
5	LD-131-201	1200 ZPVS FRONT DECAL, WITH HOTKEYS	1
6	PA-083-101	INPUT-OUTPUT BOARD 14 Inputs/10 Std Relays/2 VS Relays	1
7	PA-084-001	TOGGLE SWITCH BOARD, WITH INTERLOCK SWITCHES	2
8	PA-085-101	MAIN CONTROL BOARD (Display screen, includes memory card #12)	1
9	PA-102-001	AC INPUT BOARD	1
10	SW-026-001	TOGGLE SWITCH BOOT	12
11	TR-010-100	TRIAC, WITH WIRE LEADS	2
12	SEE PAGE 2	MEMORY CARD (Included with Main Control Board #8)	1
N/S	FS-017-018	FUSE, 2.5 AMP 5 X 20MM	1
N/S	FS-13	FUSE 3AB 20 AMP, CERAMIC BODY	1
N/S	WS-043-001	POWER SUPPLY TO CONTROL BOARD, 12V DC WIRE	1
N/S	WS-044-001	AC INPUT BOARD TO POWER SUPPLY, 120V AC WIRE	1
N/S	WS-050-001	ZERO CROSSOVER CABLE	1

Instructions for new control boards and memory cards

Important Notice: The memory card included with this main control board needs to be used with this board. Do not use an old memory card with this board.

- Newer main control board for 12 channel Ventra Plus revision “N” or higher (Part Number PA-085-101) must use a memory card software version with an “R.” For example “PS6R10010” or “PS5R804.”

Memory Card - PA-067-403-RTC

- Older main control board for 12 channel Ventra Plus revision “M” or lower (Part Number PA-085-101) must use a memory card software version without an “R.” For example “PS50804” or “PS50616.”

Memory Card - PA-067-403

- Newer main control board for 16/32 channel Ventra Plus or Gaintrac revision “K” or higher (Part Number PA-074-201) must use a memory card software version with an “R.” For example “BS6R10010” or “BS5R804.”

Memory Card - PA-067-404-RTC



How to copy settings to a new memory card:

Take your new memory card to a controller with desired settings on it, then follow the “flashing” procedure:

1. Press CANCEL 3 times.
2. Press the Down Arrow once.
3. Press ENTER once.
4. Power down the control.
5. Remove memory card.
6. Install new blank memory card.
7. Re-apply power to control.
8. Repeat steps 1-3 before powering down and switching memory cards.



Now both memory cards have the same settings saved on them. Before powering up to operate, be sure the original “old” memory card is in the “old” controller and the “new” memory card is in the “new” controller.

Note: If “flashing” does not successfully copy settings, then settings will need to be added manually. Do not move parameter chips from one memory card to another.