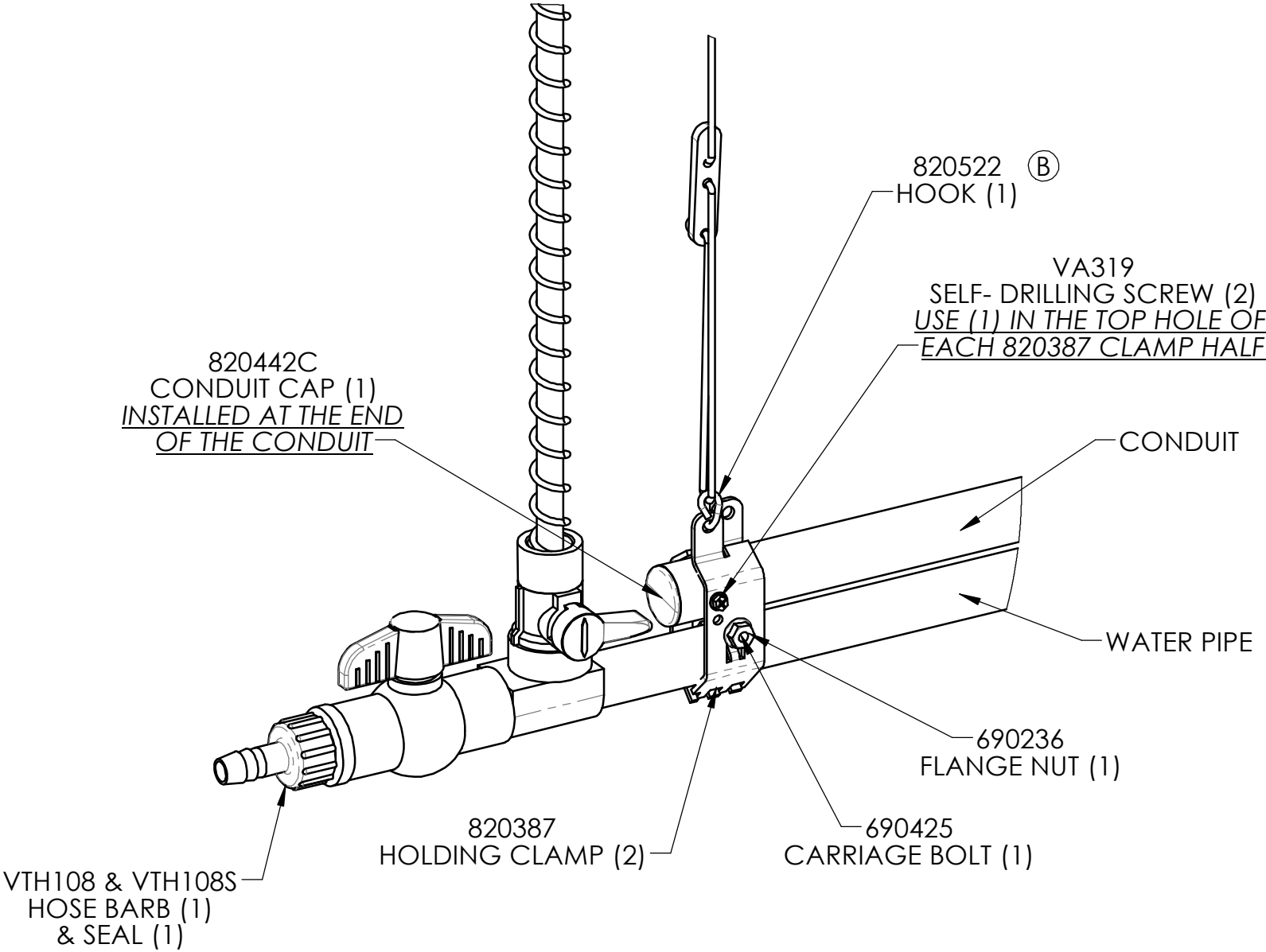
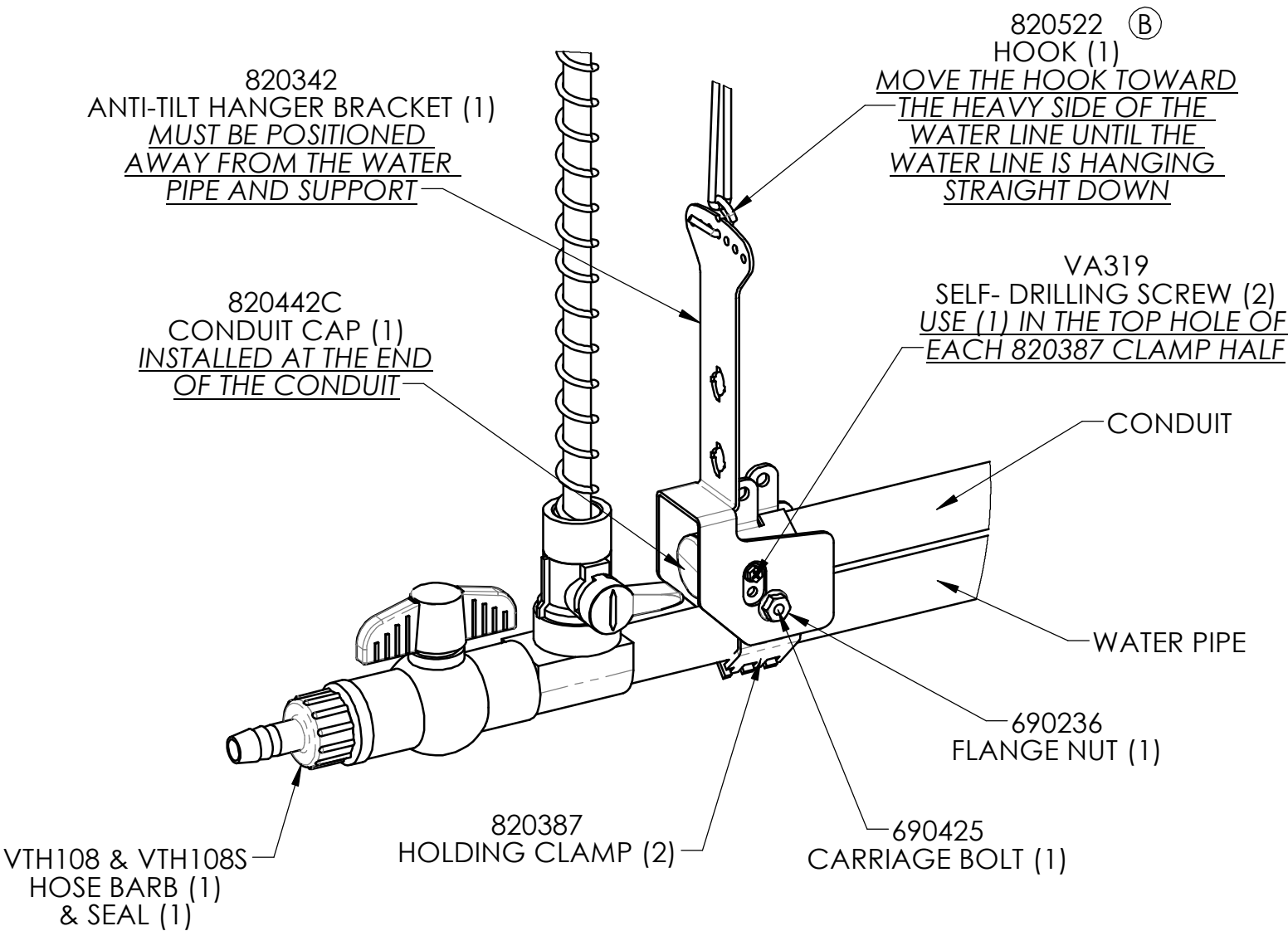


REV	ECN#	DESCRIPTION	DATE	BY
A	15389	RELEASED PART NUMBER AND PRINT INTO ES	1/5/2022	DBT
B	15688	REPLACED 820457 WITH 820522	2/15/2022	DBT

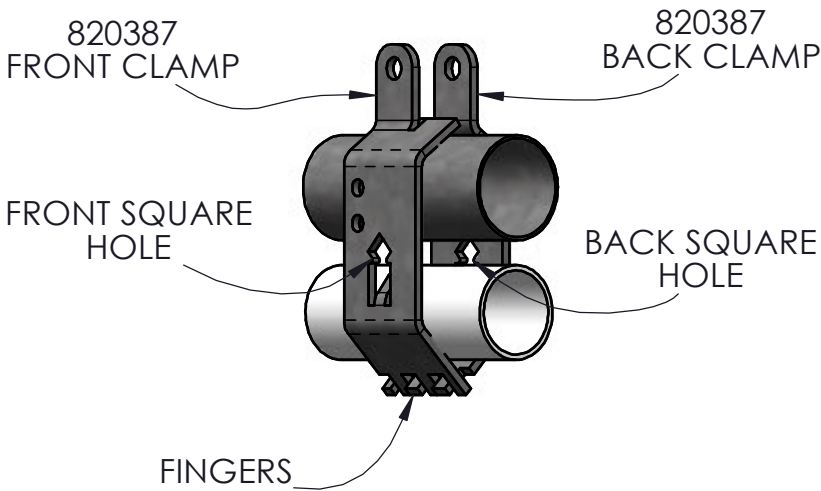


**CONDUIT INSTALLATION WITHOUT ANTI-TILT
(820242-1U)**

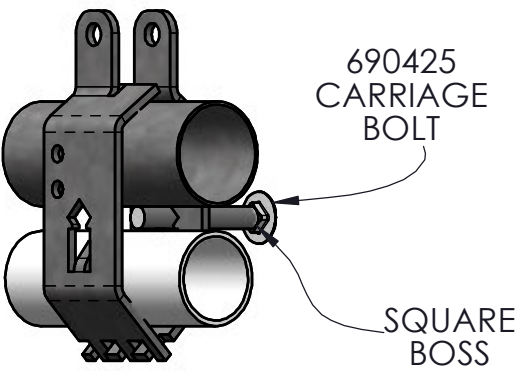


**CONDUIT INSTALLATION WITH ANTI-TILT
(820242-2U)**

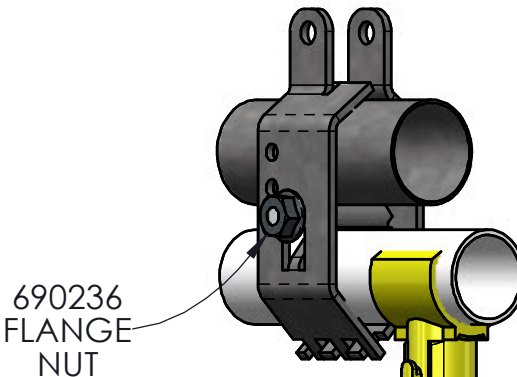
HOLDING CLAMP INSTALLATION INSTRUCTION ON CONDUIT



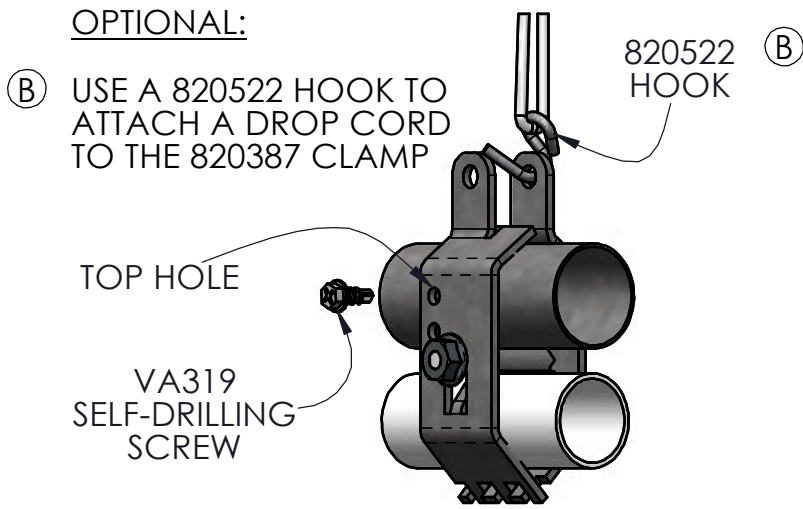
1 PLACE A 820387 CLAMP ON EACH SIDE OF THE CONDUIT AND THE WATER PIPE. ENSURE THE BOTTOM FINGERS ON BOTH CLAMPS ARE UNIFORMLY INTERLOCKED WITH EACH OTHER



2 INSERT A 690425 CARRIAGE BOLT INTO THE SQUARE HOLE ON THE BACK CLAMP, BETWEEN THE CONDUIT AND THE WATER PIPE, THROUGH THE SQUARE HOLE ON THE FRONT CLAMP
ENSURE THE SQUARE BOSS ON THE CARRIAGE BOLT SEATS INTO THE SQUARE HOLE ON THE BACK CLAMP



3 INSTALL A 690236 FLANGE NUT FINGER TIGHT; MAKE SURE THE CONDUIT IS SETTING ON TOP OF THE CARRIAGE BOLT AND THAT THE WATER LINE IS HANGING STRAIGHT DOWN, TIGHTENING THE 690236 FLANGE NUT



4 INSERT A VA319 SELF-DRILLING SCREW THROUGH THE TOP HOLE, DRILL AND SCREW IT TIGHT INTO THE CONDUIT
REPEAT ON THE OTHER SIDE

UNSPECIFIED TOLERANCES DECIMAL 2 PLACE ± .010 3 PLACE ± .002 ANGULAR ± 1/2°		DIMENSIONS IN [] ARE MILLIMETERS UNLESS OTHERWISE SPECIFIED. DATE 5/4/2021	NAME INSTALLATION INSTRUCTIONS, END ASSEMBLIES, MANUAL FLUSH	
DRAWN DBT		WEIGHT	MATERIAL	
PURCHASED		SIZE C	990279	
SCALE 1:12		SHEET 1 OF 1	CHECK 02/24/2022 Amos Fowler	REV. B

This drawing and any print thereof is the property of VALCO and is subject to return on request by this company. The information shown is confidential and the recipient, by accepting this drawing agrees not to use any information contained thereon in any manner which will be detrimental to VALCO.

VALCO INDUSTRIES, INC.
PO BOX 8
NEW HOLLAND, PA 17557