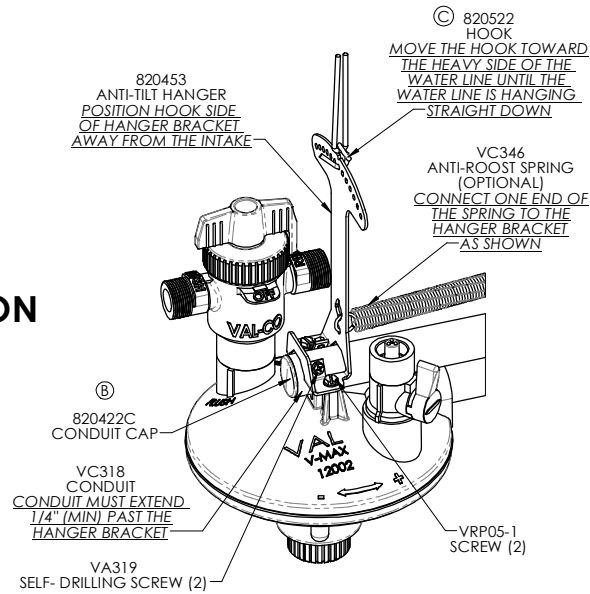


REV	ECN#	DESCRIPTION	DATE	BY
A	14786	RELEASED PART NUMBER AND PRINT INTO ES	3/26/2020	DBT
B	15379	REPLACED 2000000 WITH 820422C	6/30/2021	DBT
C	15688	REPLACED 820457 WITH 820522	2/15/2022	DBT

CONDUIT INSTALLATION



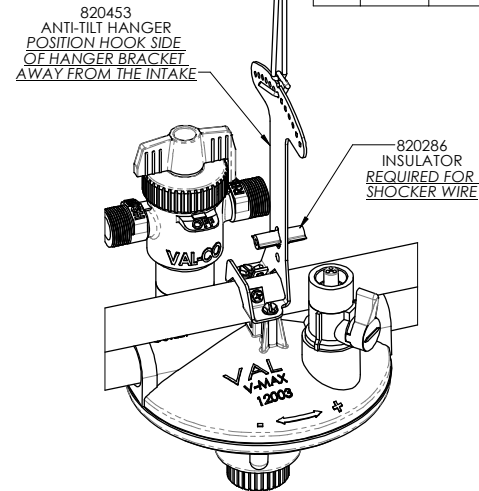
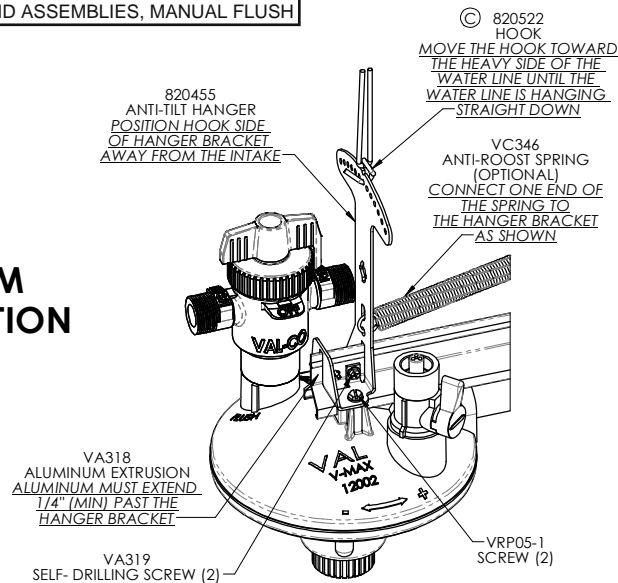
990294 [A] BOM

ITEM	PART NO.	QTY	DESCRIPTION
a	990196	1	INSTALLATION INSTRUCTIONS ANTI-TILT HANGER BRACKETS
b	990253	1	INSTALLATION INSTRUCTIONS, END ASSEMBLIES, MANUAL FLUSH

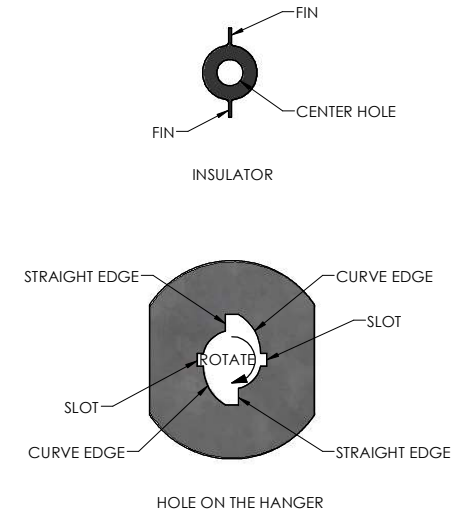
02/25/2022 Amos Fowler

VR202

ALUMINUM INSTALLATION

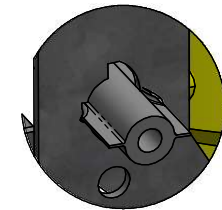


VR203 - VR204



INSULATOR INSTALLATION (OPTIONAL)

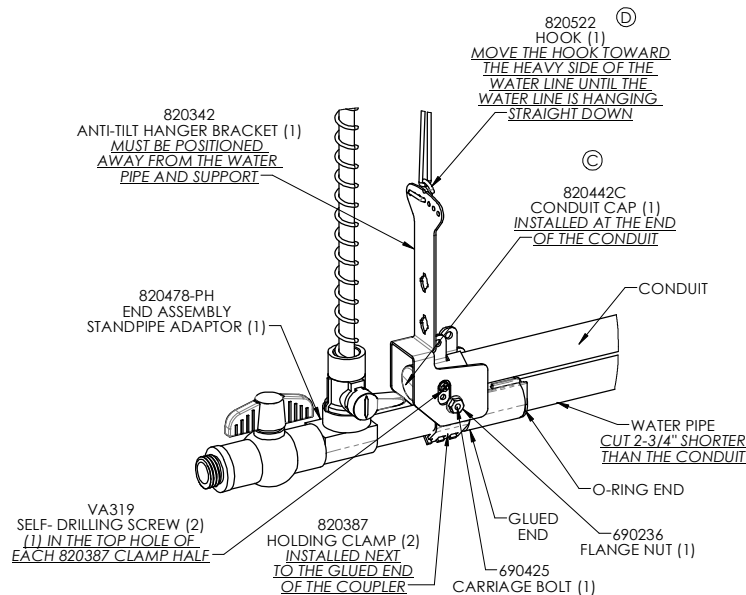
- 1- ALIGN THE INSULATOR FINNS WITH THE STRAIGHT EDGES OF THE HOLE, PUSH THE INSULATOR ABOUT 1/2 WAY THROUGH THE HANGER BRACKET
- 2- ROTATE THE INSULATOR UNTIL THE FINNS SNAP INTO BOTH SLOTS
- 3- THREAD THE SHOCKER WIRE THROUGH THE INSULATOR



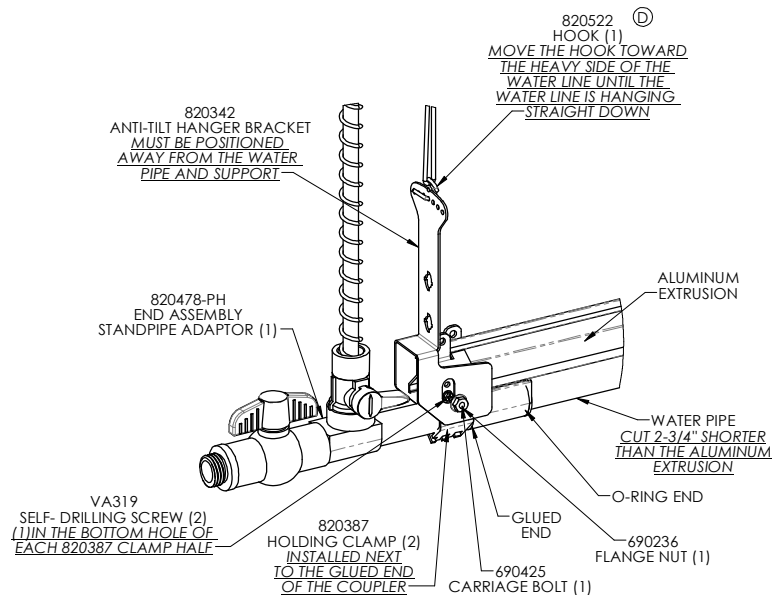
UNSPECIFIED TOLERANCES DECIMAL 2 PLACE ± 0.10 3 PLACE ± 0.02 ANGULAR ± 1/2°	DRAWN IN DATE 3/25/2020 BY DBT	NAME INSTALLATION INSTRUCTIONS ANTI-TILT HANGER BRACKETS	
		MATERIAL	
This drawing and any print thereof is the property of VALCO and is subject to return on request by this company. The information shown is confidential and the recipient, by accepting this drawing agrees not to use any information contained hereon in any manner which will be detrimental to VALCO.	WEIGHT PURCHASED SCALE 1:12	990196	
		SHEET 1 OF 1	

990294 [A] SHEET 1 OF 2

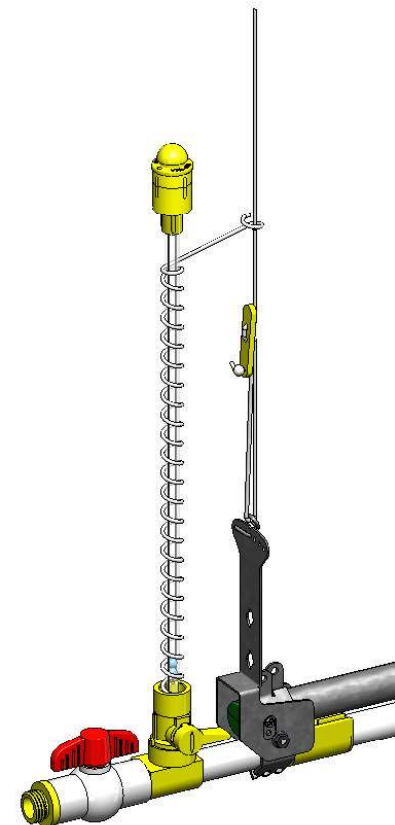
CONDUIT INSTALLATION



ALUMINUM INSTALLATION



REV	ECN#	DESCRIPTION	DATE	BY
A	14984	RELEASED PART NUMBER AND PRINT INTO ES	3/30/2020	DBT
B	15026	REMOVED INLINE AND INSULATOR INSTALLATIONS. CHANGED DRAWING NAME	4/29/2020	DBT
C	15174	ADDED 820422C	12/11/2020	DBT
D	15688	REPLACED 820457 WITH 820522	2/16/2022	DBT



NOTES:

- 1- THE WATER PIPE MUST BE CUT 2-3/4" SHORTER THAN THE CONDUIT OR ALUMINUM EXTRUSION
- 2- THE HOLDING CLAMPS 820387 MUST BE INSTALLED NEXT TO THE COUPLER
- 3- FOR CONDUIT SUPPORT USE (1) VA319 SELF-DRILLING SCREW IN THE TOP HOLE OF EACH 820387 CLAMP HALF
- 4- FOR ALUMINUM SUPPORT USE (1) VA319 SELF-DRILLING SCREW IN THE BOTTOM HOLE OF EACH 820387 CLAMP HALF

UNSPECIFIED TOLERANCES		DIMENSION IN 1/16" INCHES		NAME	
DECIMAL	2 PLACE	± .010		INSTALLATION INSTRUCTIONS, END ASSEMBLIES, MANUAL FLUSH	
2 PLACE	3 PLACE	± .002		MATERIAL	
ANGULAR	1/2"	± 1/2"			
DATE		3/30/2020			
DRAWN		DBT			
WEIGHT					
PURCHASED					
SIZE		C			
SCALE		1:12			
CHECK		02/23/2022			
BY		Amos Fowler			
REV.		D			
SHEET 1 OF 1					