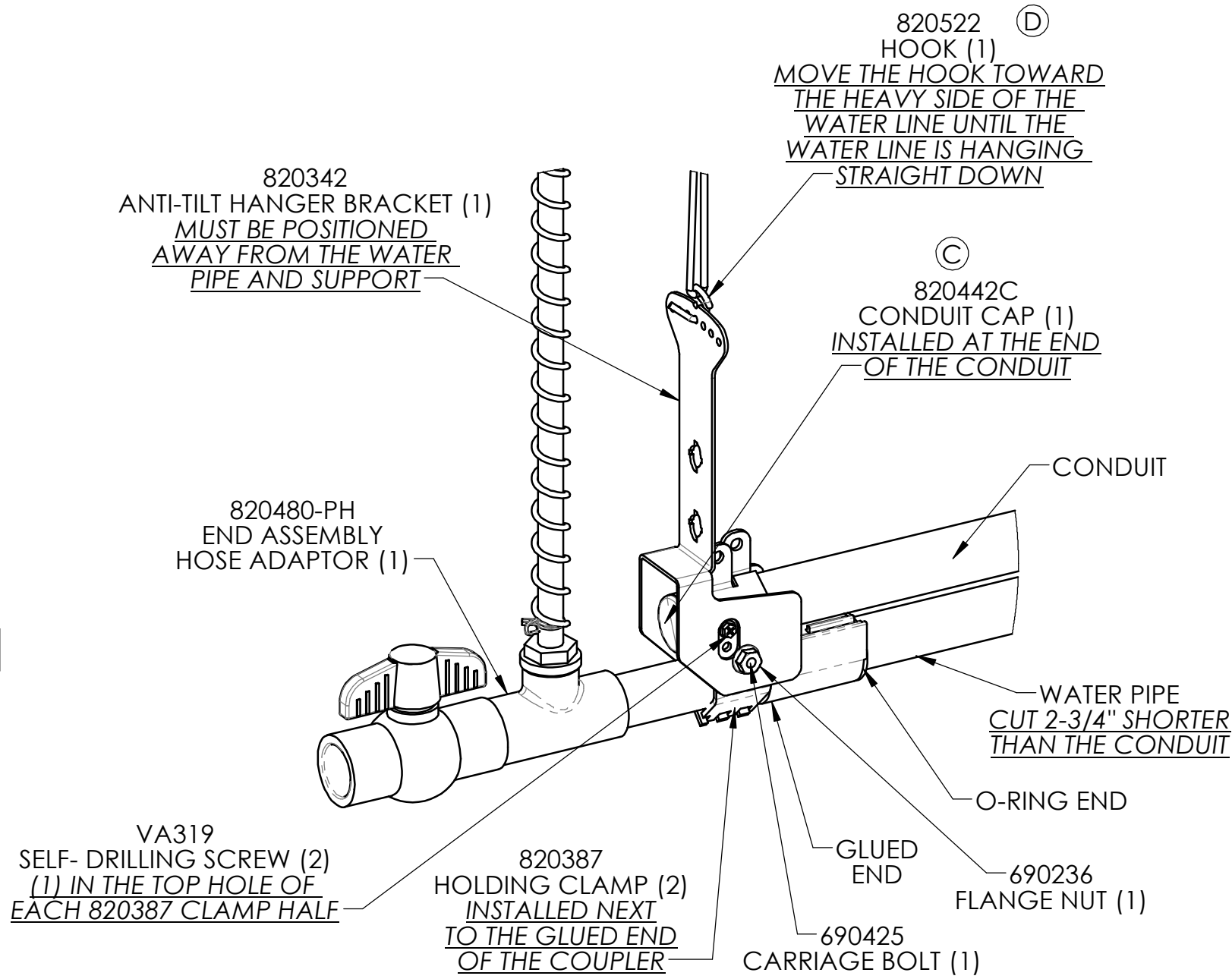
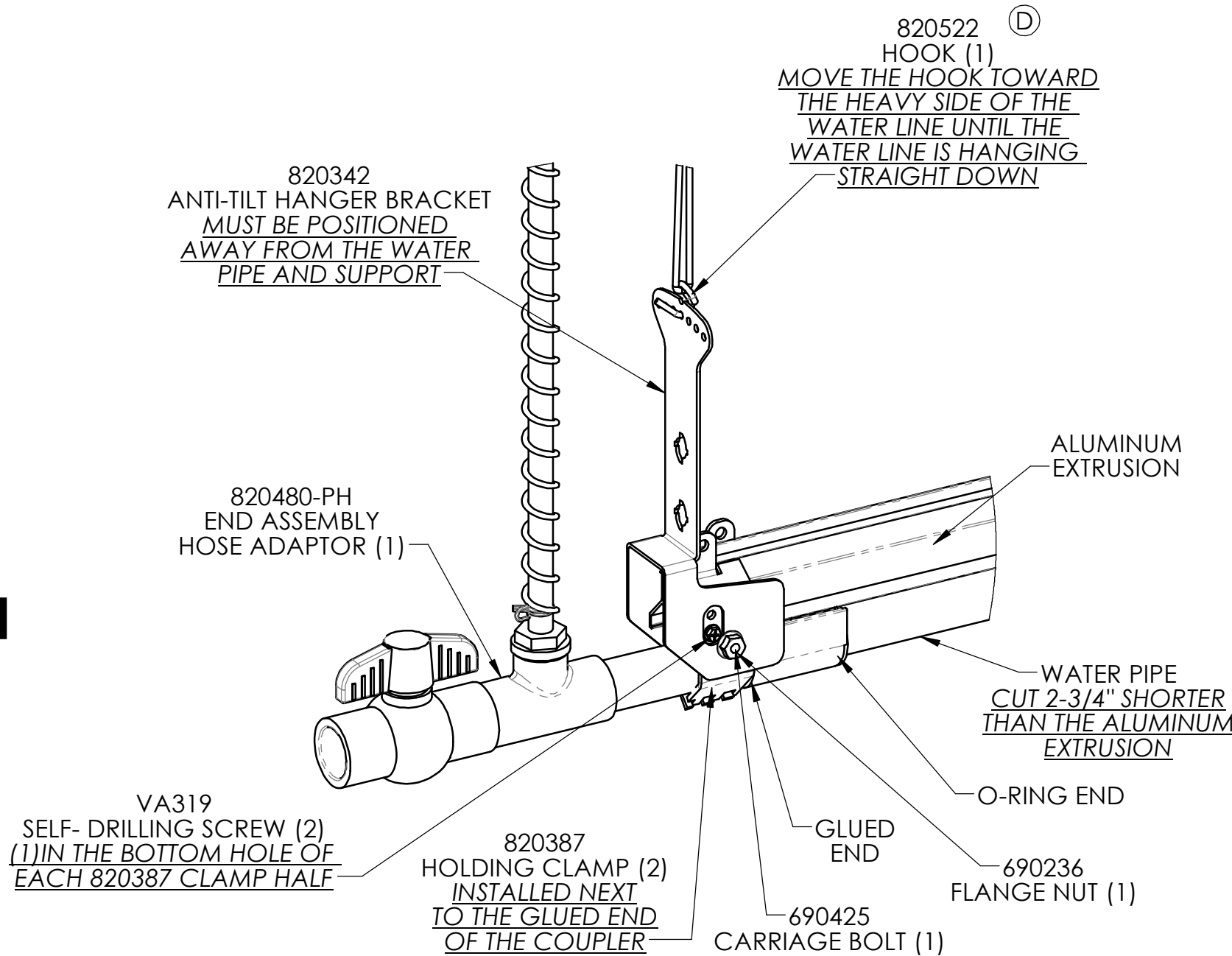


CONDUIT
INSTALLATION



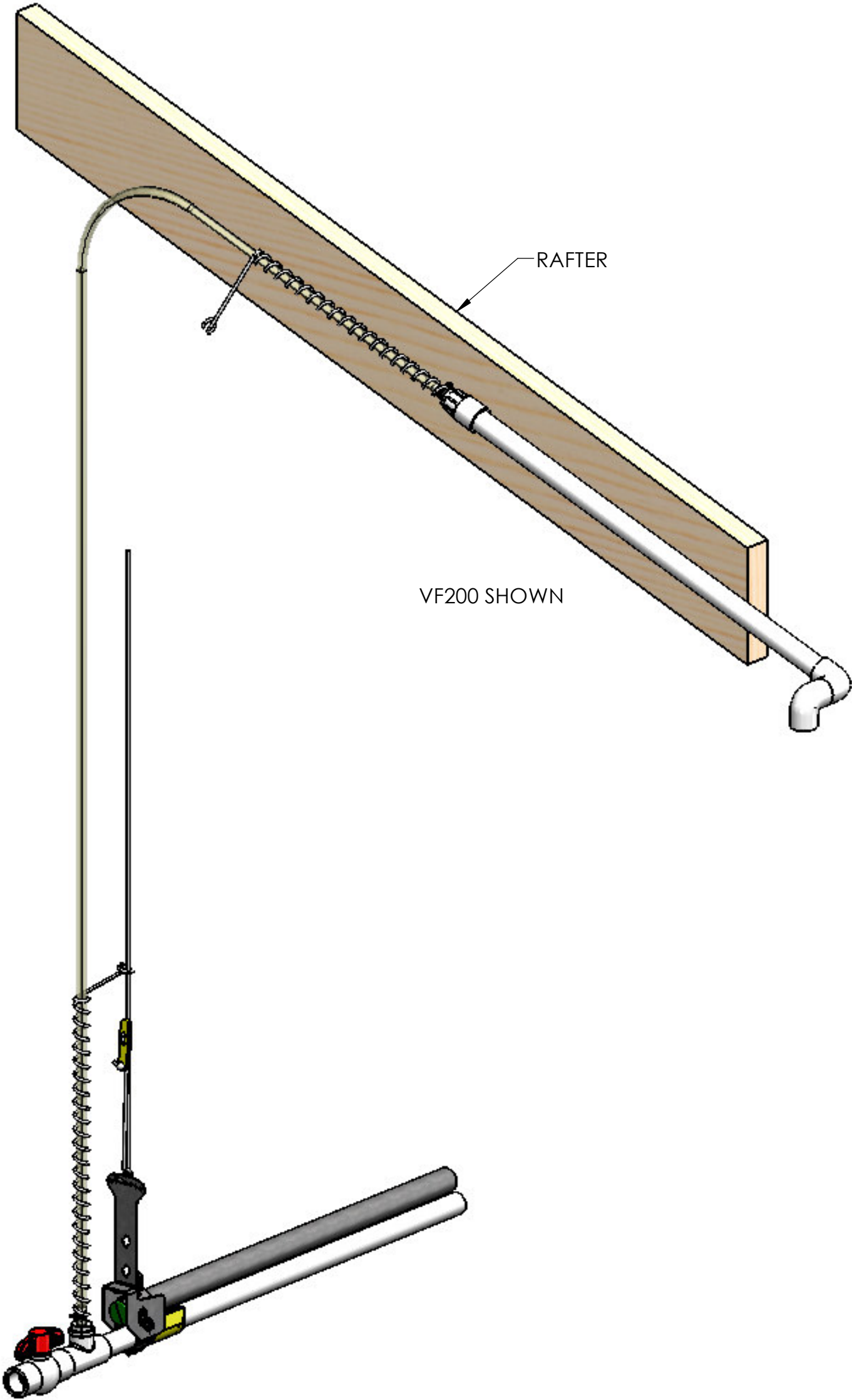
ALUMINUM
INSTALLATION




NOTES:

- 1- THE WATER PIPE MUST BE CUT 2-3/4" SHORTER THAN THE CONDUIT OR ALUMINUM EXTRUSION
- 2- THE HOLDING CLAMPS 820387 MUST BE INSTALLED NEXT TO THE COUPLER
- 3- FOR CONDUIT SUPPORT USE (1) VA319 SELF-DRILLING SCREW IN THE TOP HOLE OF EACH 820387 CLAMP HALF
- 4- FOR ALUMINUM SUPPORT USE (1) VA319 SELF-DRILLING SCREW IN THE BOTTOM HOLE OF EACH 820387 CLAMP HALF

REV	ECN#	DESCRIPTION	DATE	BY
A	14984	RELEASED PART NUMBER AND PRINT INTO ES	3/30/2020	DBT
B	15026	REMOVED MANUAL END ASSEMBLIES. CHANGED DRAWING NAME	4/29/2020	DBT
C	15174	ADDED 820422C	12/11/2020	DBT
D	15688	REPLACED 820457 WITH 820522	2/16/2022	DBT



UNSPECIFIED TOLERANCES DECIMAL 2 PLACE ± .010 3 PLACE ± .002 ANGULAR ± 1/2°		DIMENSIONS IN [] ARE MILLIMETERS UNLESS OTHERWISE SPECIFIED.		NAME INSTALLATION INSTRUCTIONS, END ASSEMBLIES, AUTOFLUSH ⑥	
DATE 3/30/2020		DRAWN DBT		MATERIAL	
WEIGHT		PURCHASED		990249	
SIZE C		SCALE 1:12		CHECK 02/23/2022 Amos Fowler	REV. D
SHEET 1 OF 1		SHEET 1 OF 1		PO BOX 958 LANCASTER, PA 17608	
<div><div>This drawing and any print thereof is the property of VAL-CO and is subject to return on request by this company. The information shown is confidential and the recipient, by accepting this drawing agrees not to use any information contained thereon in any manner which will be detrimental to VAL-CO.</div><div> PO BOX 958 LANCASTER, PA 17608</div></div>					