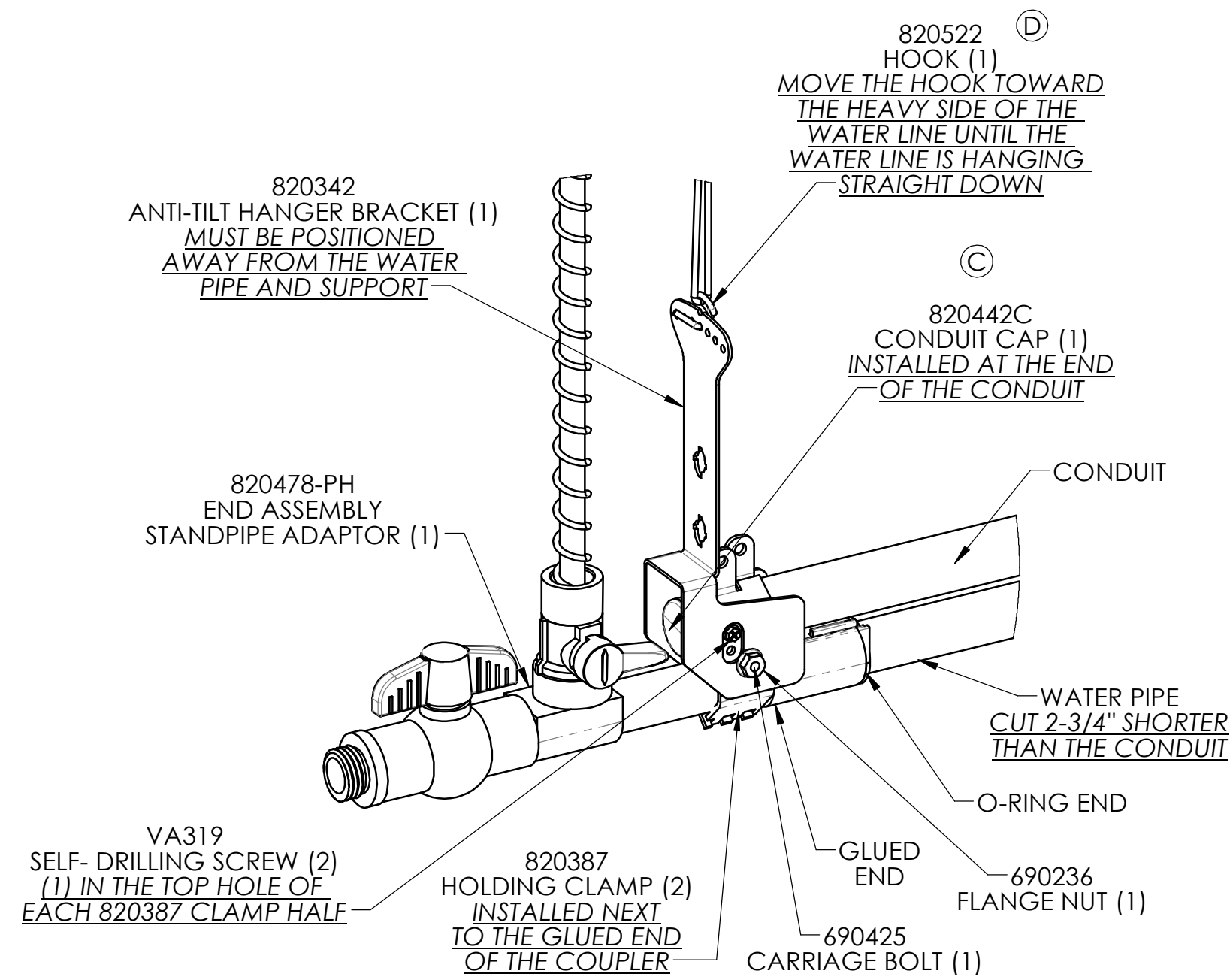
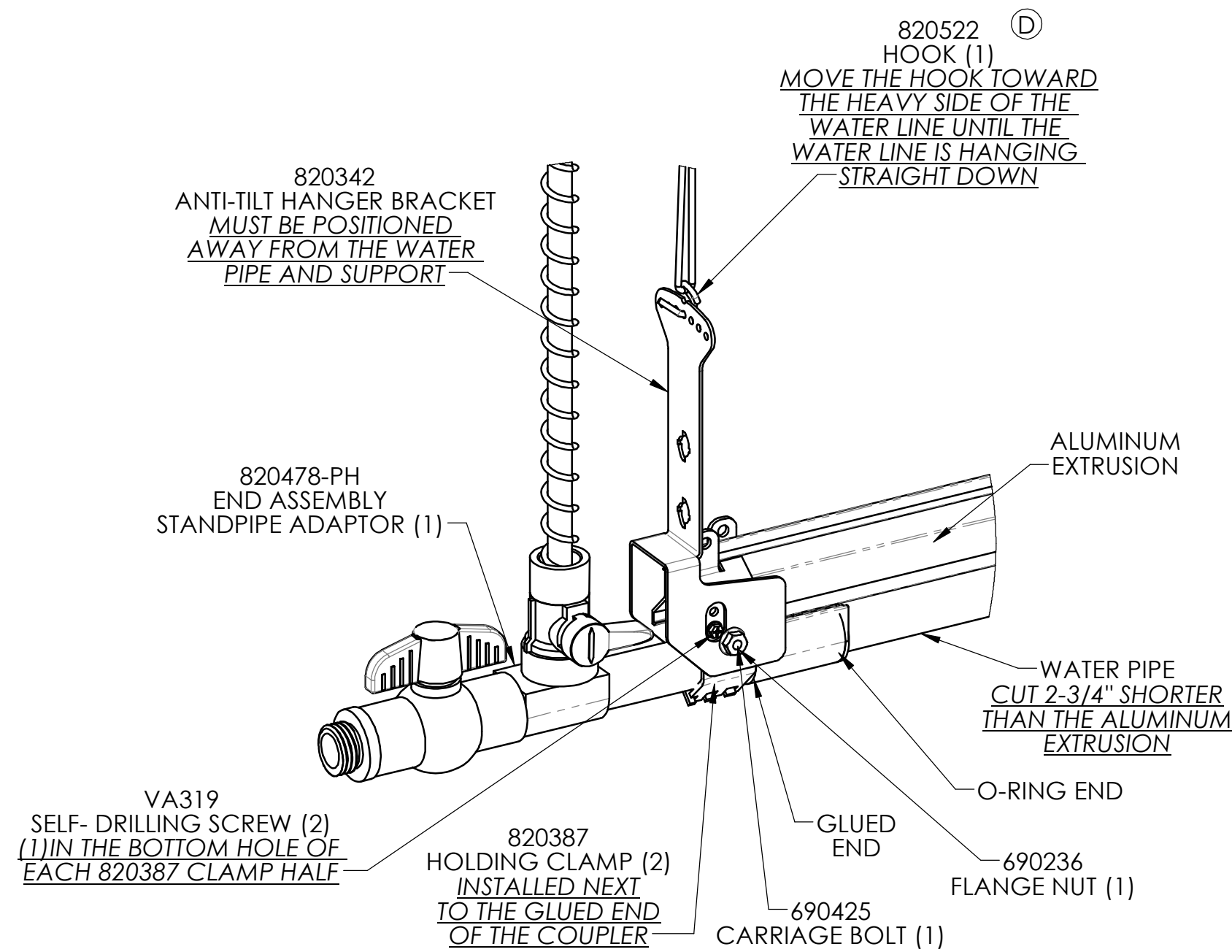


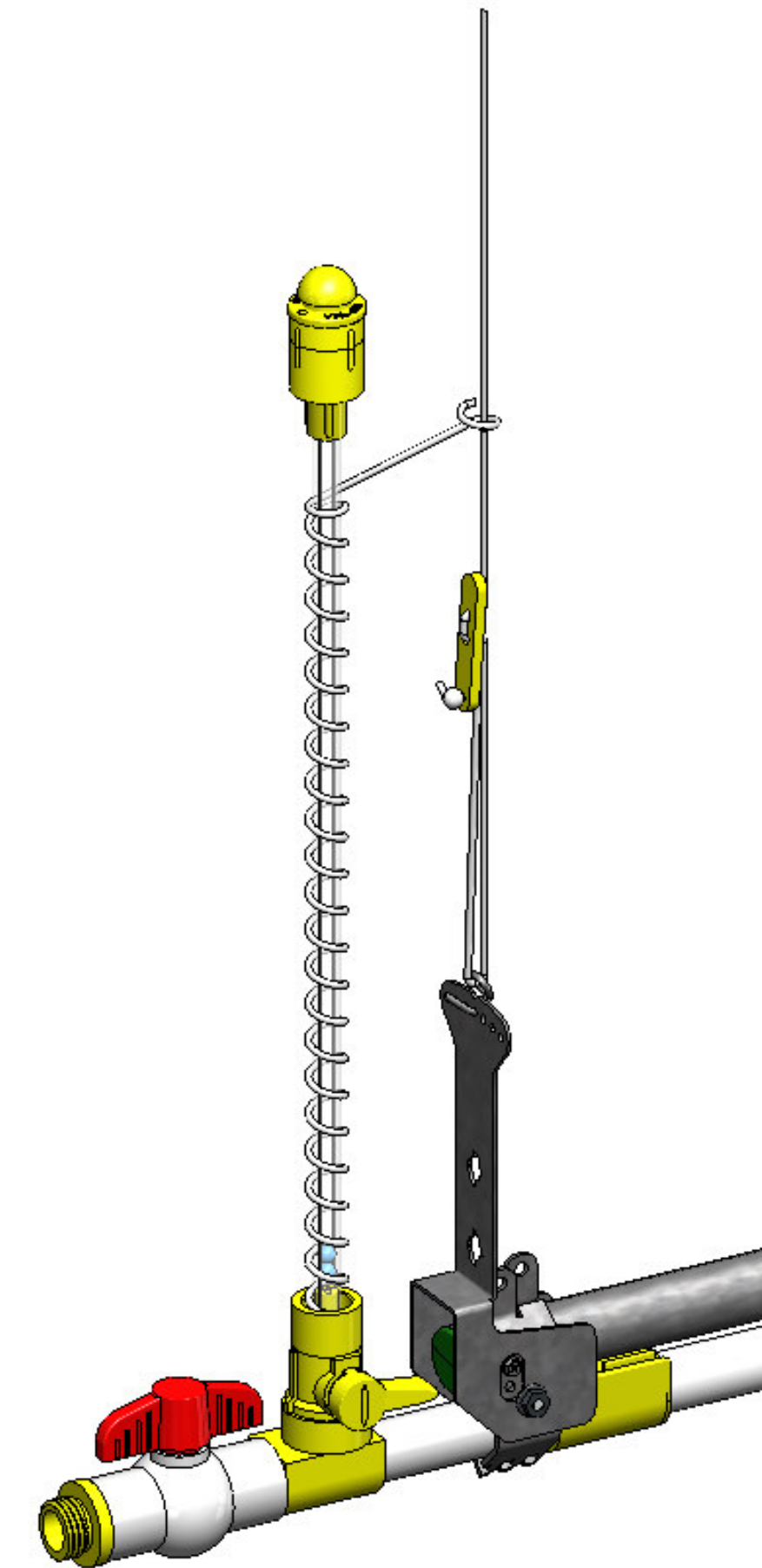
## CONDUIT INSTALLATION



## ALUMINUM INSTALLATION



REV	ECN#	DESCRIPTION	DATE	BY
A	14984	RELEASED PART NUMBER AND PRINT INTO ES	3/30/2020	DBT
B	15026	REMOVED INLINE AND INSULATOR INSTALLATIONS. CHANGED DRAWING NAME	4/29/2020	DBT
C	15174	ADDED 820422C	12/11/2020	DBT
D	15688	REPLACED 820457 WITH 820522	2/16/2022	DBT



### NOTES:

- 1- THE WATER PIPE MUST BE CUT 2-3/4" SHORTER THAN THE CONDUIT OR ALUMINUM EXTRUSION
- 2- THE HOLDING CLAMPS 820387 MUST BE INSTALLED NEXT TO THE COUPLER
- 3- FOR CONDUIT SUPPORT USE (1) VA319 SELF-DRILLING SCREW IN THE TOP HOLE OF EACH 820387 CLAMP HALF
- 4- FOR ALUMINUM SUPPORT USE (1) VA319 SELF-DRILLING SCREW IN THE BOTTOM HOLE OF EACH 820387 CLAMP HALF

UNSPECIFIED TOLERANCES DECIMAL 2 PLACE ± .010 3 PLACE ± .002 ANGULAR ± 1/2°		DIMENSIONS IN [ ] ARE MILLIMETERS UNLESS OTHERWISE SPECIFIED.	NAME INSTALLATION INSTRUCTIONS, END ASSEMBLIES, MANUAL FLUSH <sup>Ⓑ</sup>
DATE 3/30/2020		DRAWN DBT	MATERIAL
This drawing and any print thereof is the property of VALCO and is subject to return on request by this company. The information shown is confidential and the recipient, by accepting this drawing agrees not to use any information contained thereon in any manner which will be detrimental to VALCO.		WEIGHT PURCHASED SIZE SCALE 1:12	990253 SHEET 1 OF 1 CHECK 02/23/2022 Amos Fowler REV. D PO BOX 958 LANCASTER, PA 17608