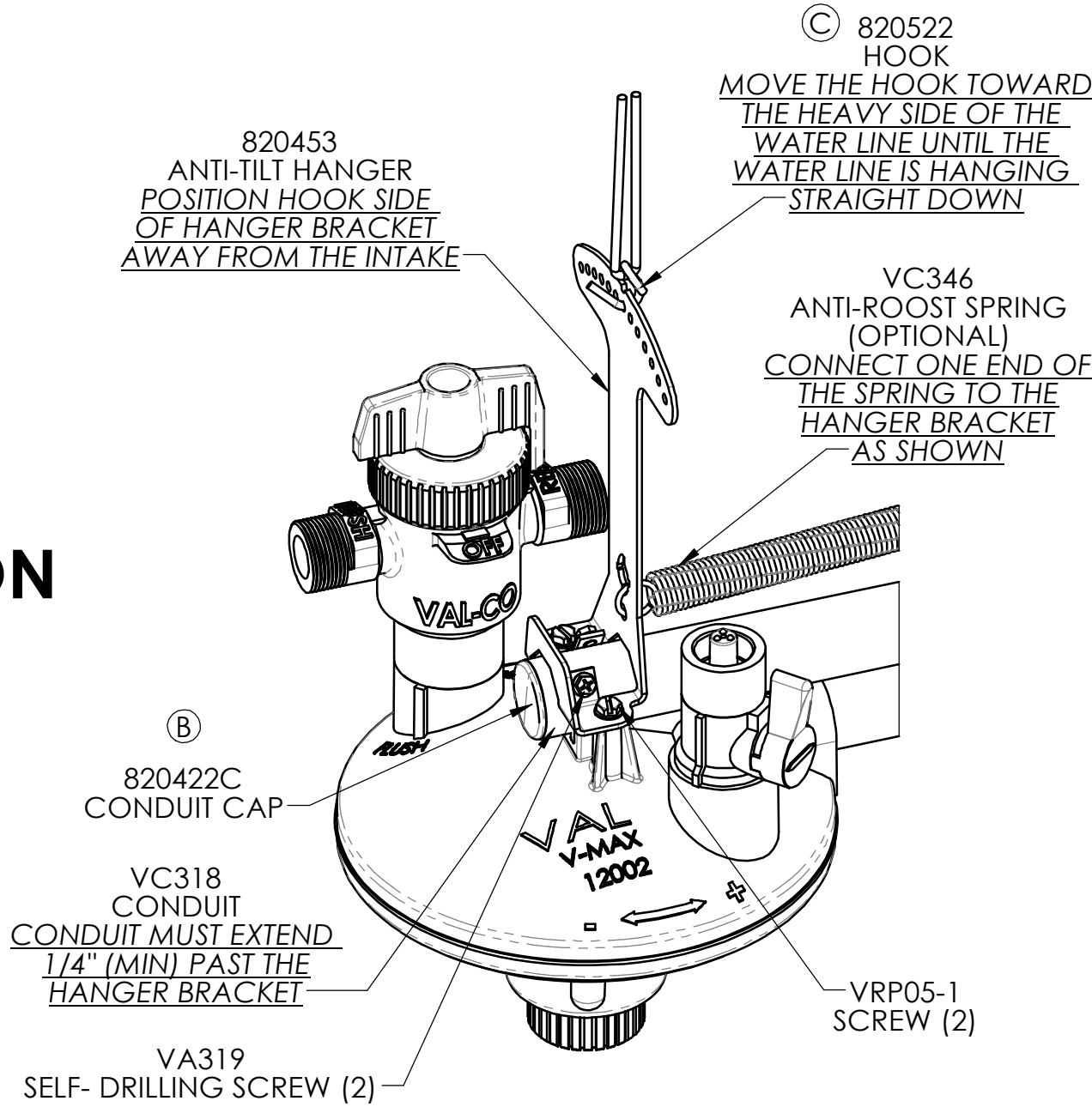
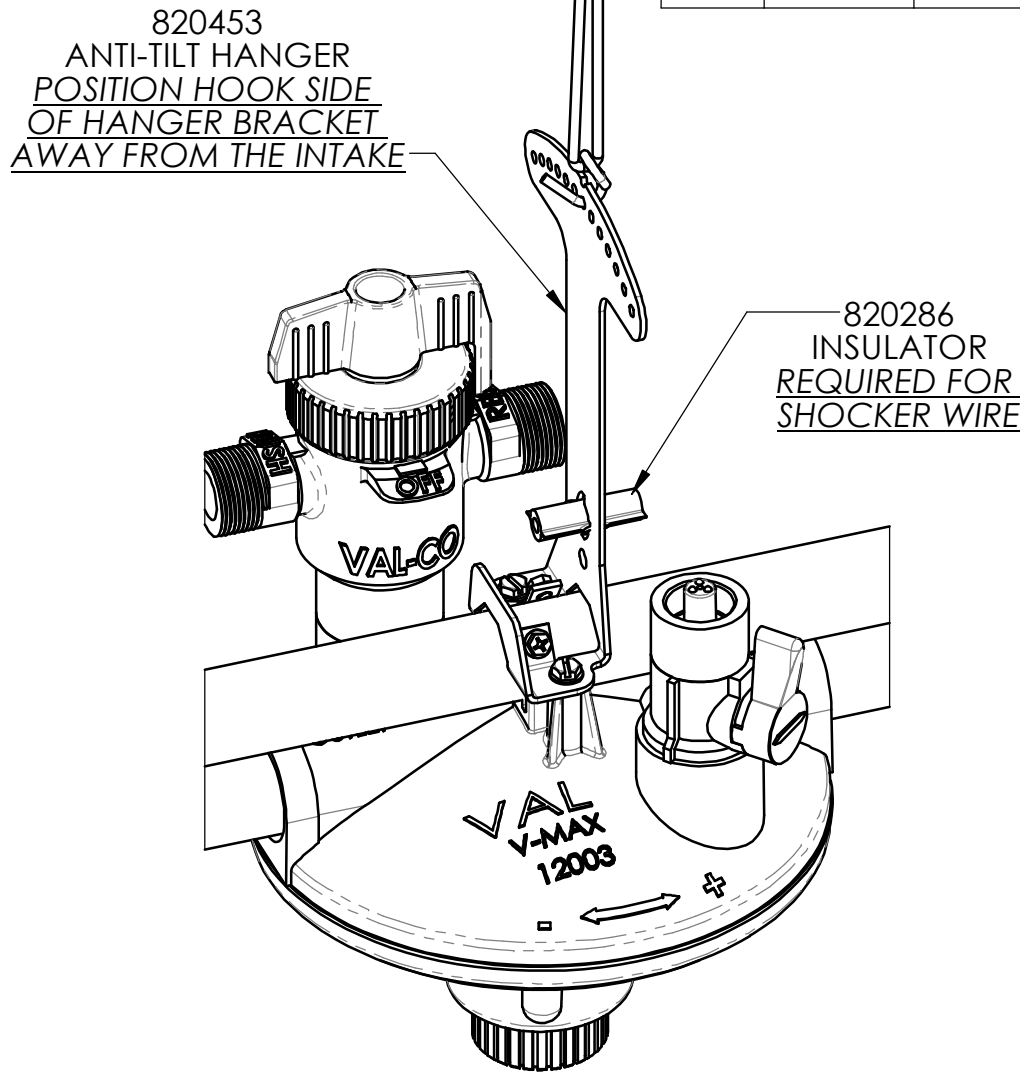


REV	ECN#	DESCRIPTION	DATE	BY
A	14786	RELEASED PART NUMBER AND PRINT INTO ES	3/26/2020	DBT
B	15379	REPLACED 2000000 WITH 820422C	6/30/2021	DBT
C	15688	REPLACED 820457 WITH 820522	2/15/2022	DBT

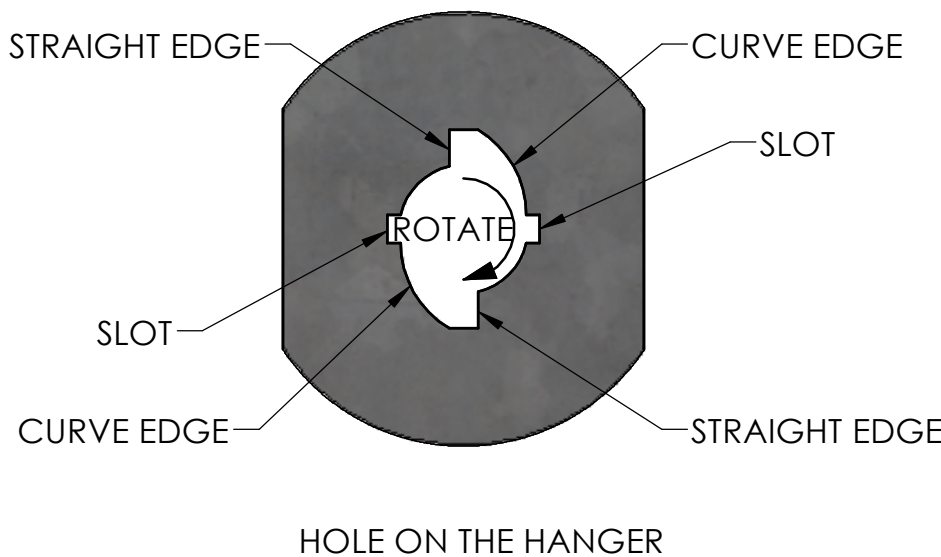
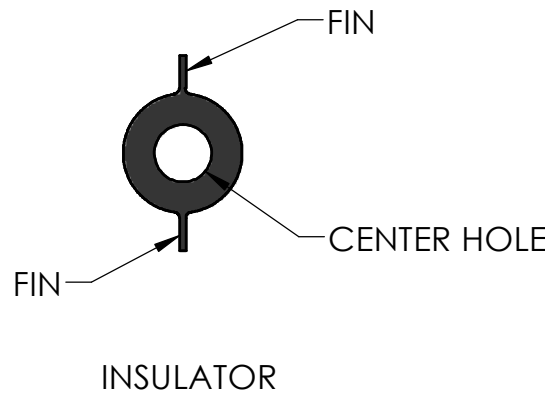
CONDUIT INSTALLATION



VR202

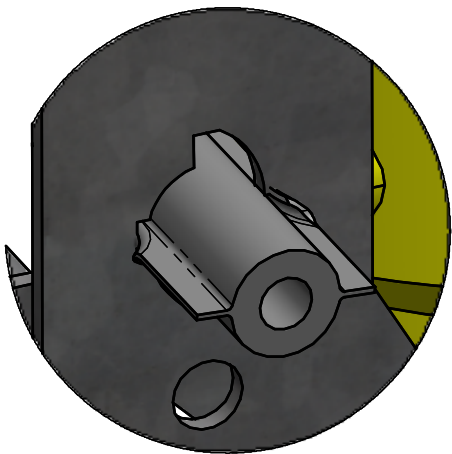


VR203 - VR204

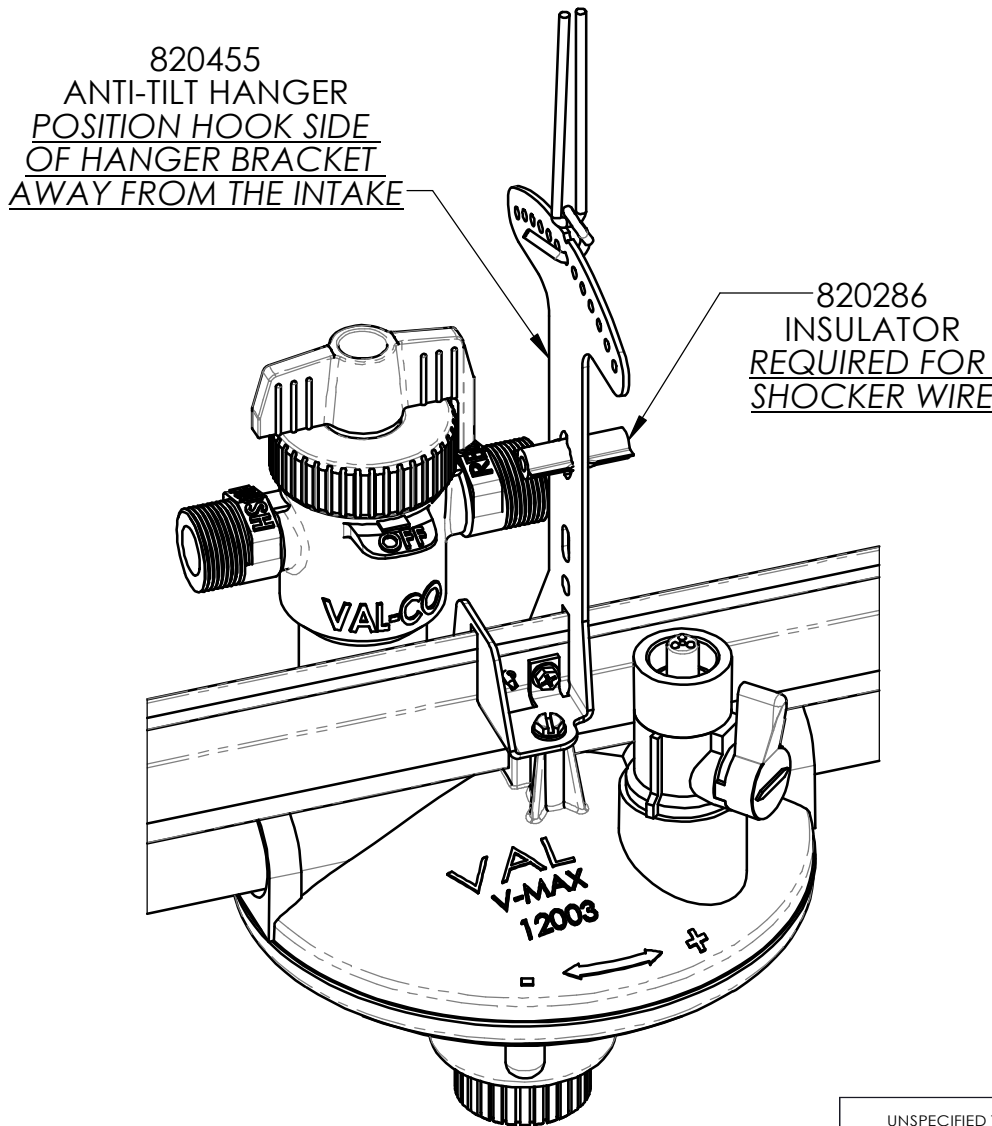
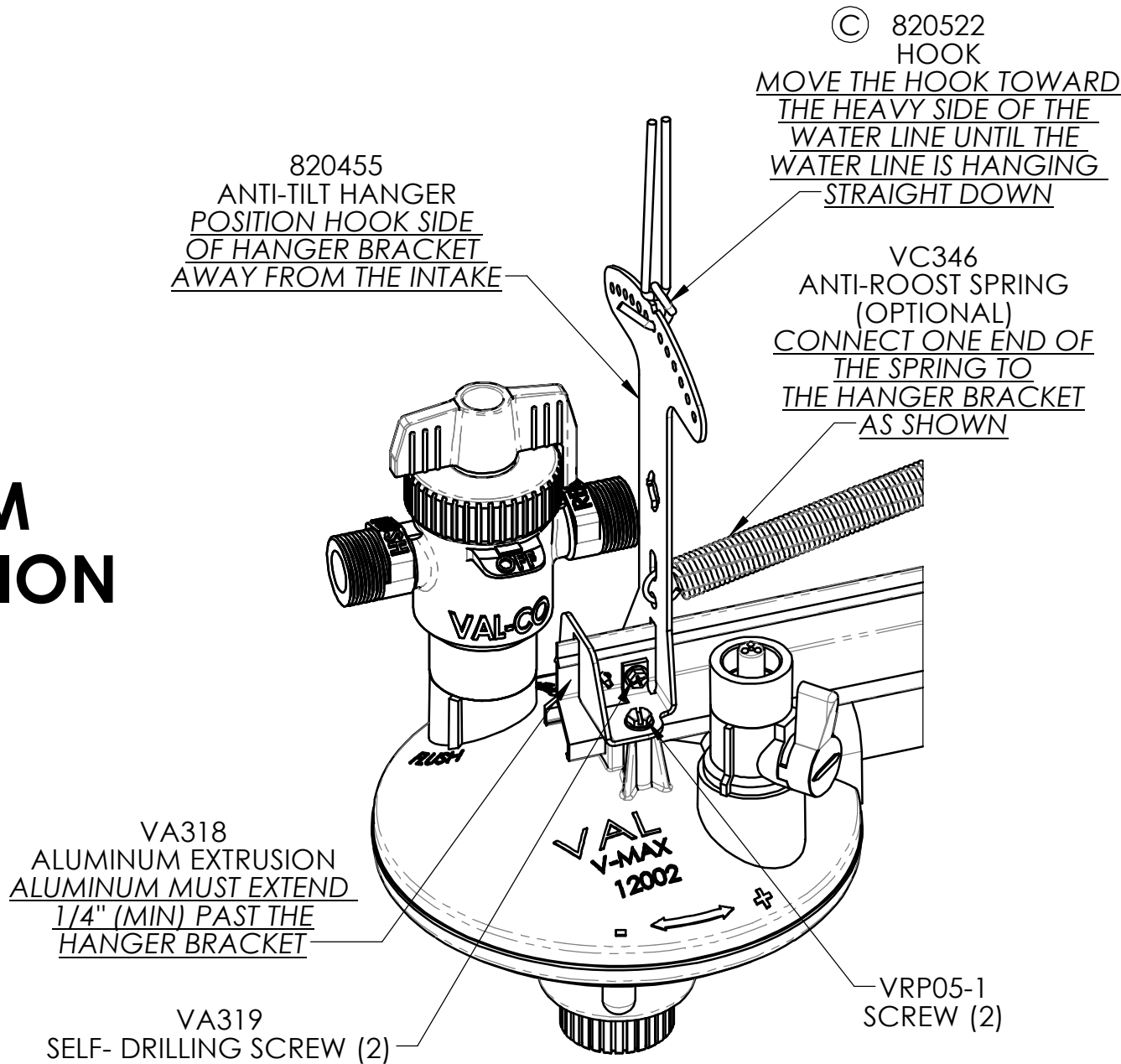


INSULATOR INSTALLATION (OPTIONAL)

- 1- ALIGN THE INSULATOR FINS WITH THE STRAIGHT EDGES OF THE HOLE, PUSH THE INSULATOR ABOUT 1/2 WAY THROUGH THE HANGER BRACKET
- 2- ROTATE THE INSULATOR UNTIL THE FINS SNAP INTO BOTH SLOTS
- 3- THREAD THE SHOCKER WIRE THROUGH THE INSULATOR



ALUMINUM INSTALLATION



UNSPECIFIED TOLERANCES DECIMAL 2 PLACE ± .010 3 PLACE ± .002 ANGULAR ± 1/2°	DIMENSIONS IN [] ARE MILLIMETERS UNLESS OTHERWISE SPECIFIED.		NAME INSTALLATION INSTRUCTIONS ANTI-TILT HANGER BRACKETS	
	DATE	3/25/2020	MATERIAL	
	DRAWN	DBT	990196	
	WEIGHT			
This drawing and any print thereof is the property of VAL-CO and is subject to return on request by this company. The information shown is confidential and the recipient, by accepting this drawing agrees not to use any information contained thereon in any manner which will be detrimental to VAL-CO.		PURCHASED	SHEET 1 OF 1	
		SIZE C		
		SCALE 1:12	CHECK 02/23/2022 Amos Fowler	REV. C

