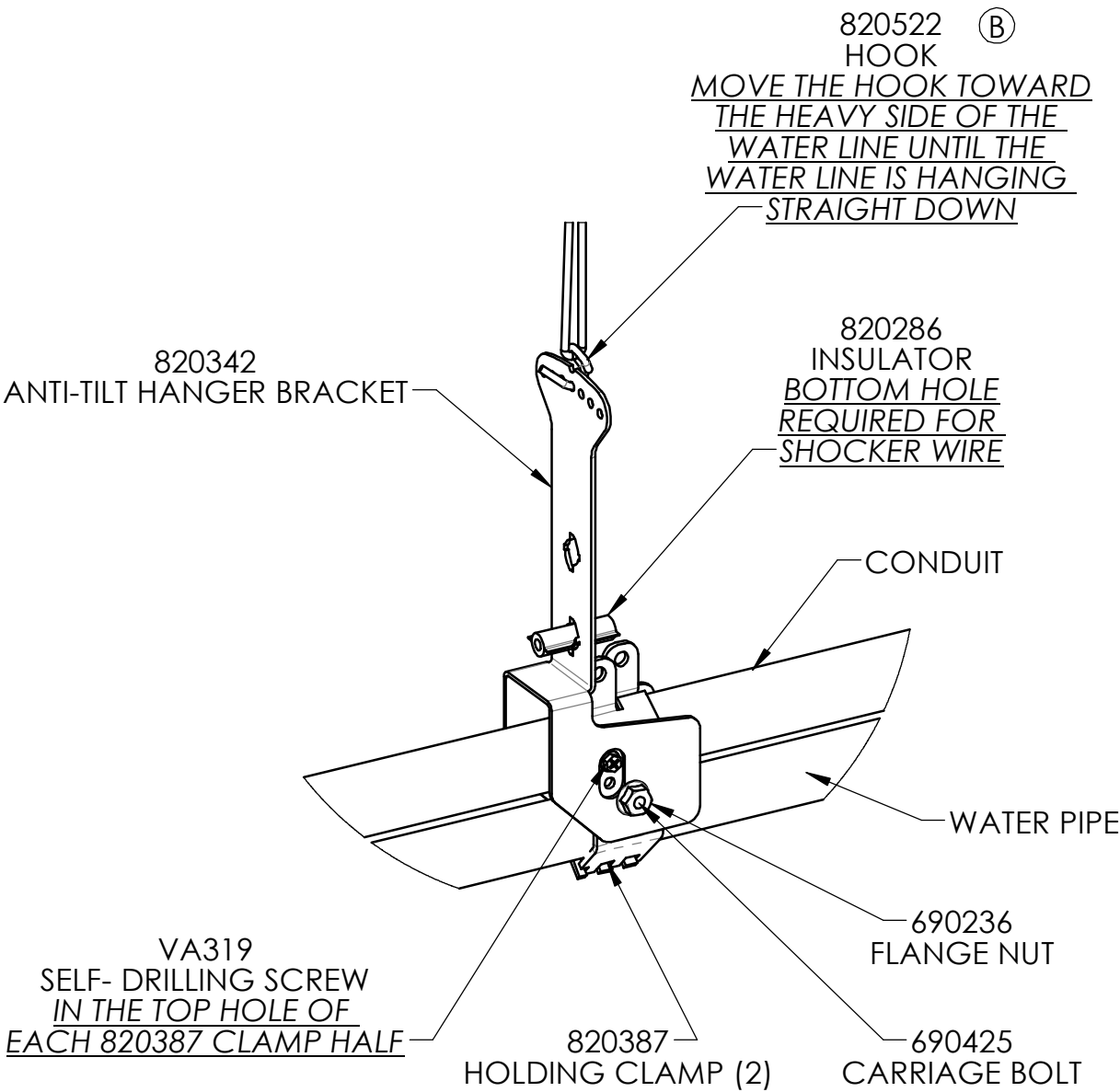
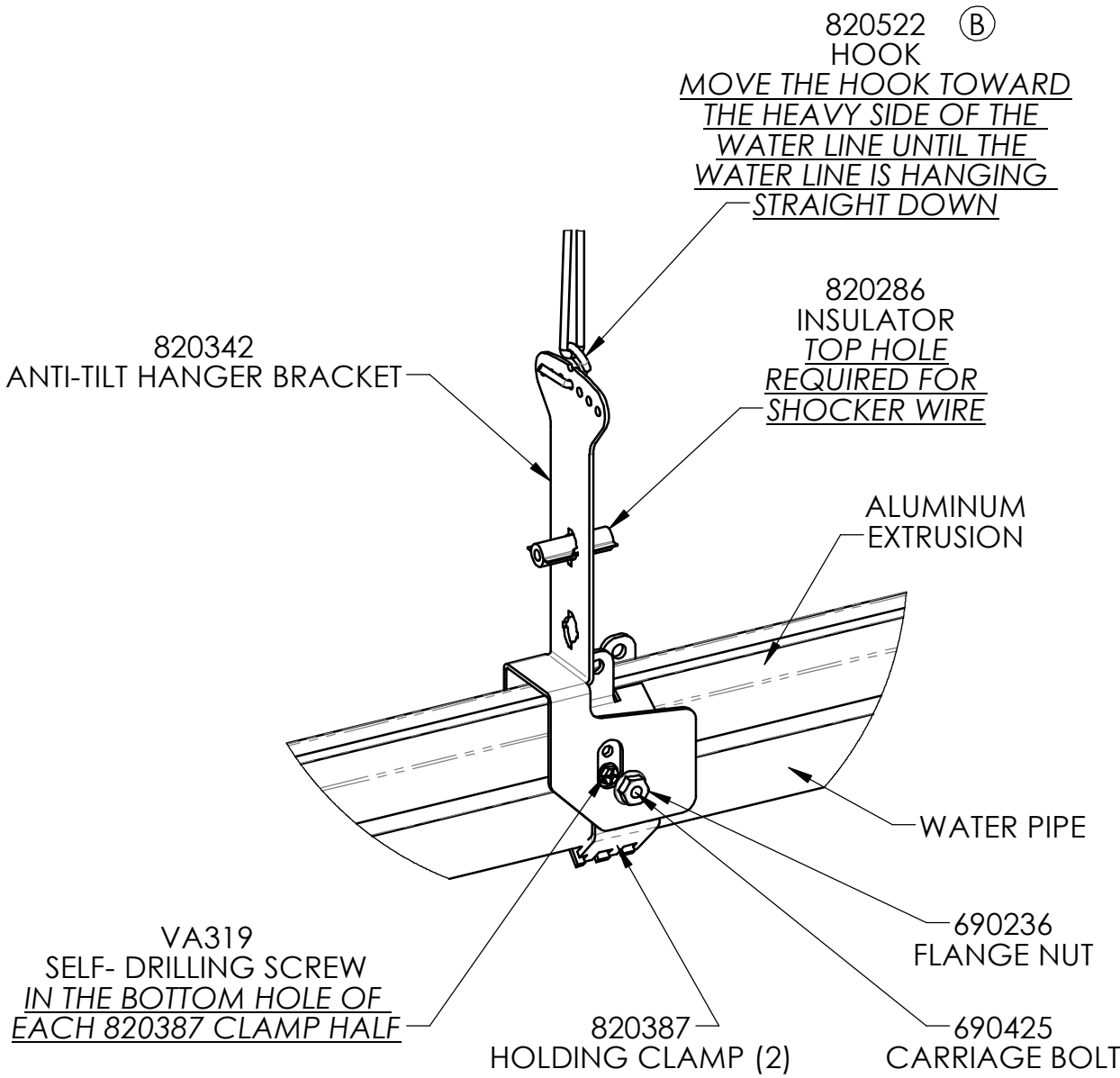


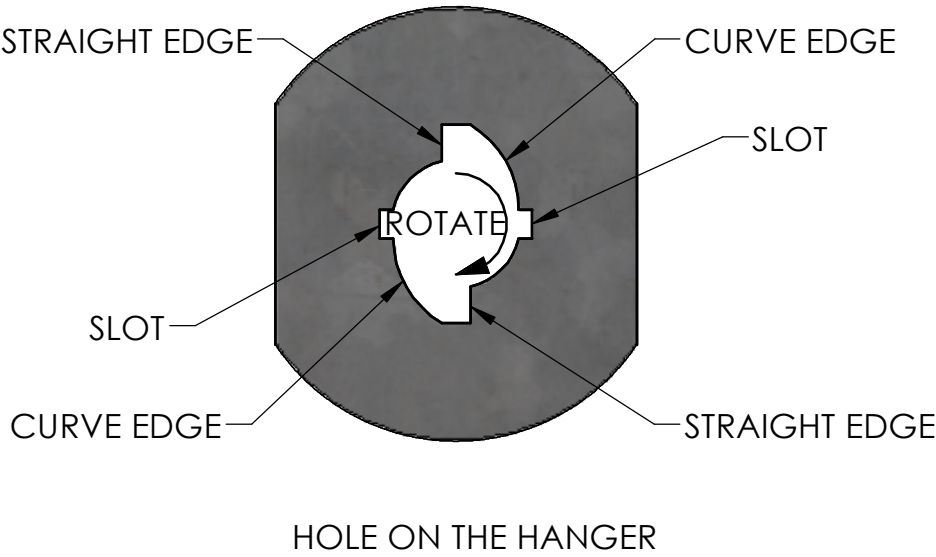
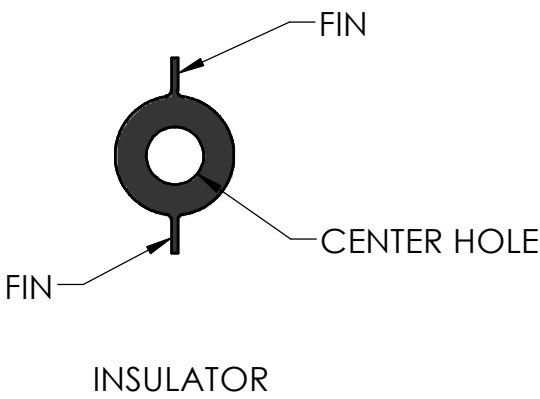
CONDUIT  
INSTALLATION



ALUMINUM  
INSTALLATION

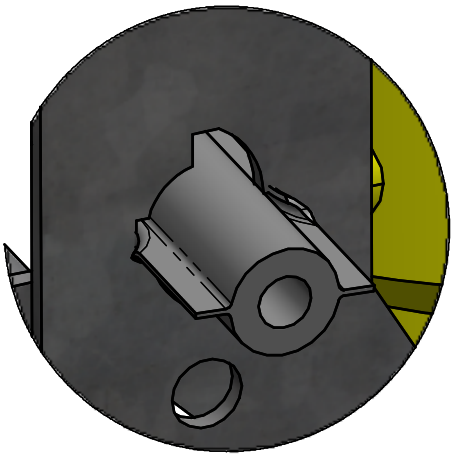


REV	ECN#	DESCRIPTION	DATE	BY
A	15027	RELEASED PART NUMBER AND PRINT INTO ES	4/29/2020	DBT
B	15688	REPLACED 820457 WITH 820522	2/17/2022	DBT



INSULATOR INSTALLATION (WHEN USING A SHOCKER WIRE)

- 1- ALIGN THE INSULATOR FINNS WITH THE STRAIGHT EDGES OF THE HOLE, PUSH THE INSULATOR ABOUT 1/2 WAY THROUGH THE HANGER BRACKET
- 2- ROTATE THE INSULATOR UNTIL THE FINNS SNAP INTO BOTH SLOTS
- 3- THREAD THE SHOCKER WIRE THROUGH THE INSULATOR



UNSPECIFIED TOLERANCES DECIMAL 2 PLACE ± .010 3 PLACE ± .002 ANGULAR ± 1/2°	DIMENSIONS IN [ ] ARE MILLIMETERS UNLESS OTHERWISE SPECIFIED.		NAME INSTALLATION INSTRUCTIONS, HOLDING CLAMP SET W/ HANGER	
	DATE	4/29/2020	MATERIAL	
	DRAWN	DBT	990251	
	WEIGHT		SHEET 1 OF 1	
This drawing and any print thereof is the property of VALCO and is subject to return on request by this company. The information shown is confidential and the recipient, by accepting this drawing agrees not to use any information contained thereon in any manner which will be detrimental to VALCO.	PURCHASED		CHECK 02/23/2022 Amos Fowler	REV. B
	SIZE	C		
	SCALE	1:12		



PO BOX 958 LANCASTER, PA 17608