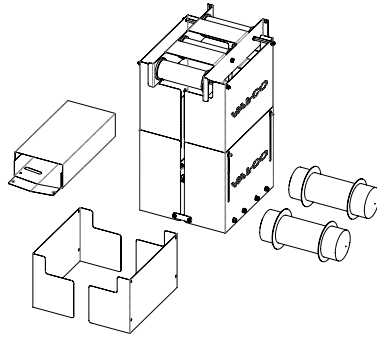




8" Polypropylene Egg Belt Take-Up Kit (413539) & Belt Instruction

990180
Quick Sheet



Installing the Take-Up

The take-up is pre-assembled and is easily attached to the egg collector.

1. Begin by placing the take-up assembly at the proper location toward the back of the egg collector table. (If this is a retro-fit installation you will need to disconnect the table from the trough covers and pull away from the wall to allow room for the take-up.)
2. Use four 5/16 hex bolts, lock washers and nuts to secure the the take-up to the back of the egg collector table (Figure 1).
3. If necessary shorten or lengthen the take-up by loosening 1/4-20 nuts (012793) on covers and slide up or down either direction as required for correct height (Figure 2). Do this to both sides (front and back) of take-up. When finished, the guards MUST be resting on the floor.

Figure 1

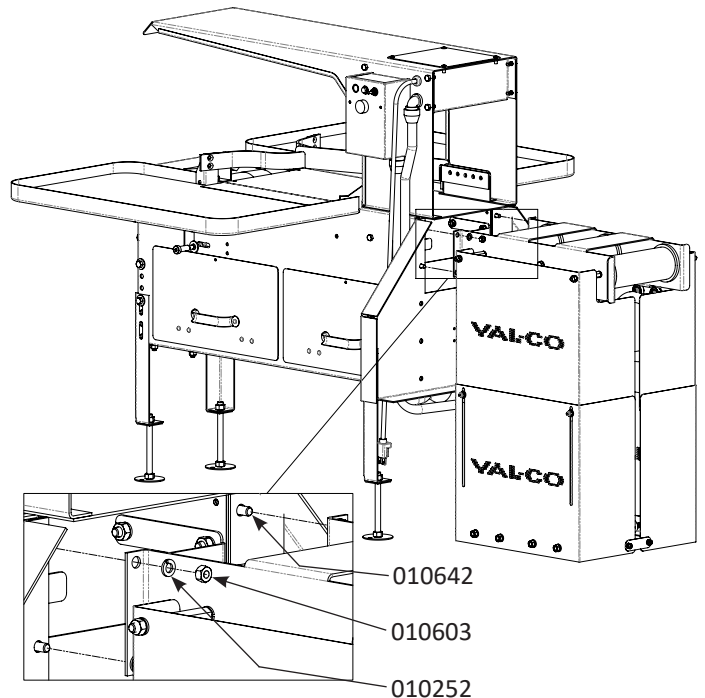
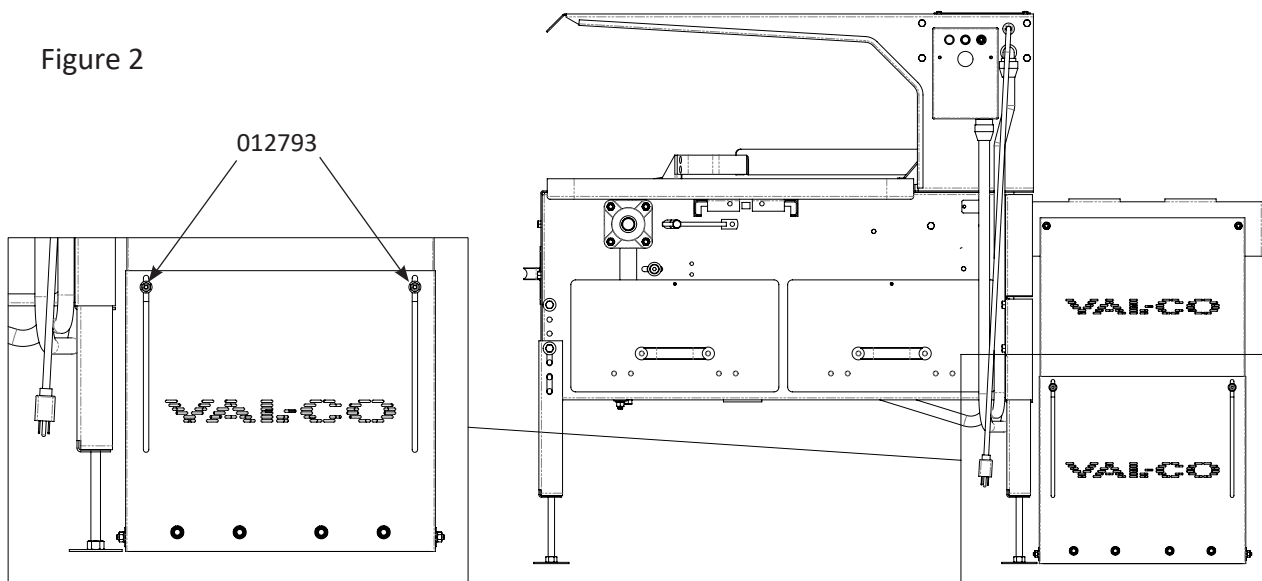


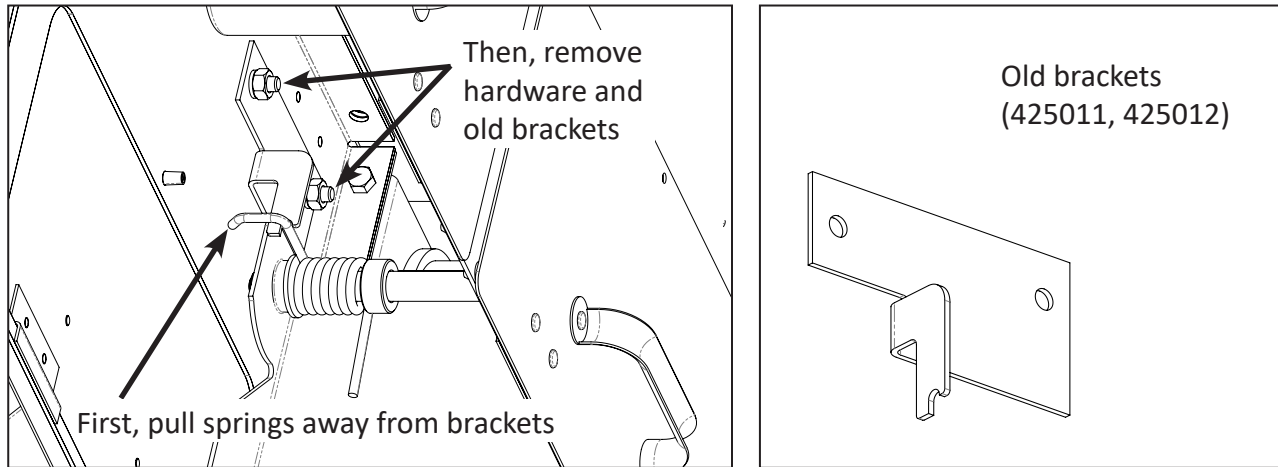
Figure 2



Removing and Replacing Spring Tensioner Brackets

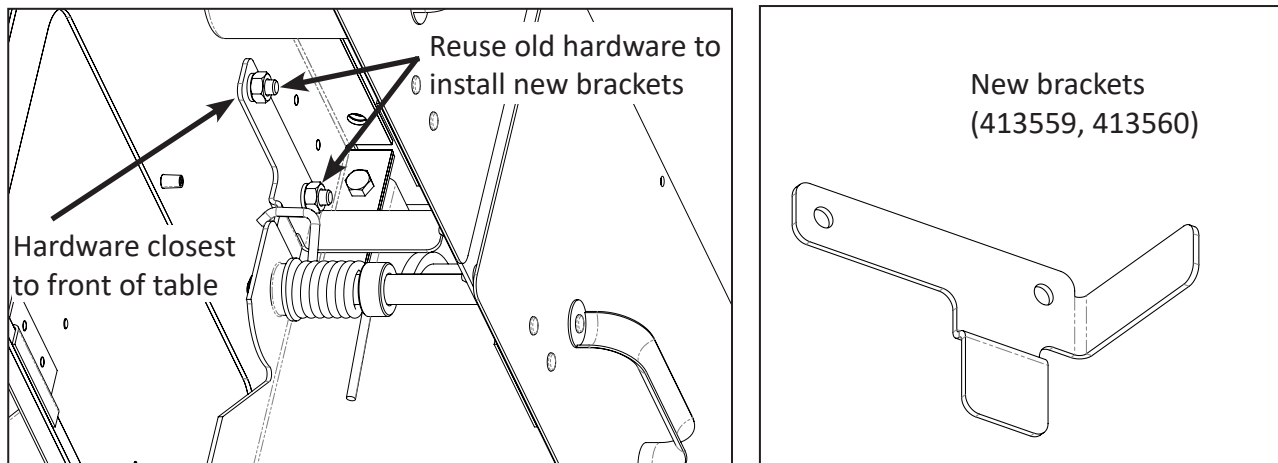
4. Remove spring tension on tensioner assembly by releasing pressure on springs. Use pliers to pull on the spring's 90° bend and pull it away from the spring tensioner bracket. Do this to both springs (Figure 3).

Figure 3



5. Remove old spring tensioner brackets (and hardware) from table, and replace with new spring tensioner brackets, reusing original hardware and hole locations. Temporarily secure brackets loosely with only 1 bolt, lock washer and nut closest to the front of the table (Figure 4).

Figure 4



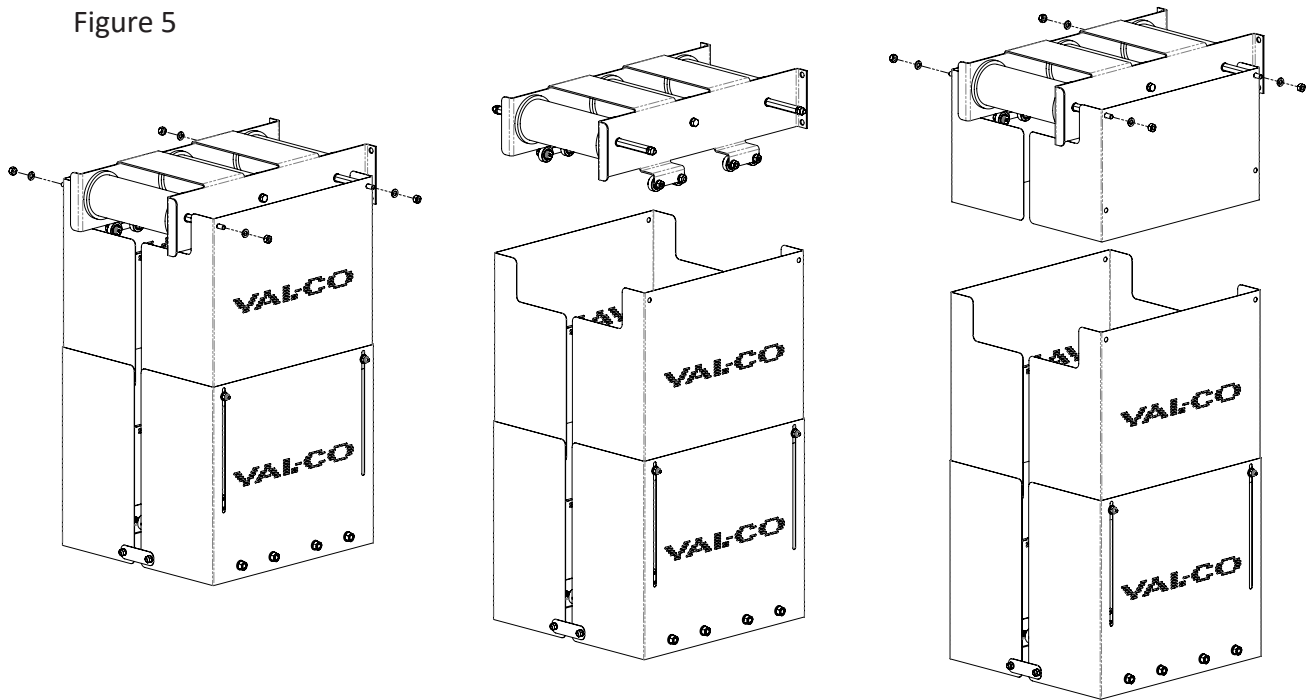
6. Pivot the spring tensioner brackets so they apply tension back to the 90° bend on the springs until the bolt holes line up with bolt holes in table sides.
7. Secure spring tensioner brackets with remaining hardware and tighten.
8. Place takeup bracket against back of table and secure with 3/8 x 1-1/4 bolts included with hardware bag and previously removed lock washers and nuts.

Extending the Take-Up

Extra panels are included with kits for additional lengthening.

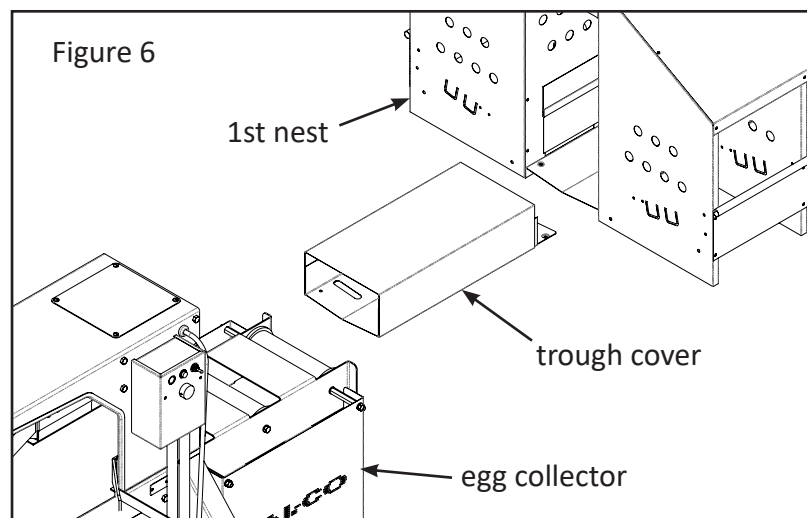
9. To extend panels remove the top 010603 nuts and 010252 lock washers to release the take-up at top covers from the roller bracket. Attach extension panels to each side of roller bracket using same hardware. Now attach the take-up, at top of covers, to extension panels. Match panel holes and use supplied hardware. **THIS STEP MAY BE PERFORMED AFTER THE BELT IS THREADED OR YOU MAY LEAVE THE TOP FRONT COVER OF THE EXTENDED OR NON-EXTENDED TAKE-UP UNTIL AFTER THE BELT IS THREADED (Figure 5).**

Figure 5



Installing the Connector Troughs and Covers

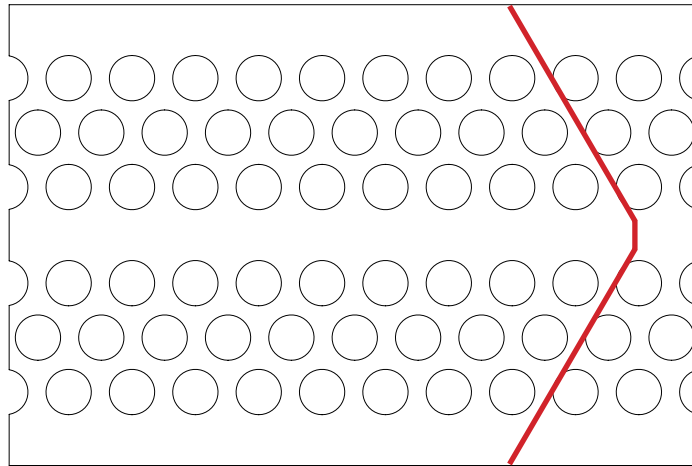
10. Before the belt is threaded, install connector troughs and covers. Retro fit installations may need additional trough covers to make up for the added distance, which are included in the take-up kit. If this is a retro-fit install you will need to detach the trough cover from the table and pull the table away from wall to allow room for the take-up. Attach the 410943 trough covers at the 1st nest (Figure 6). Then attach to existing trough covers using rivets also included in the take-up kit. **THREAD THE BELT THROUGH THE TROUGH COVERS AND THROUGHOUT THE NESTS.**



Installing the Polypropylene Egg Belt

- Trim end of polypropylene egg belt in an arrow form, with a straight edge at the center of the end (Figure 7).

Figure 7



Leave some edge around holes then discard trimmed edge piece.

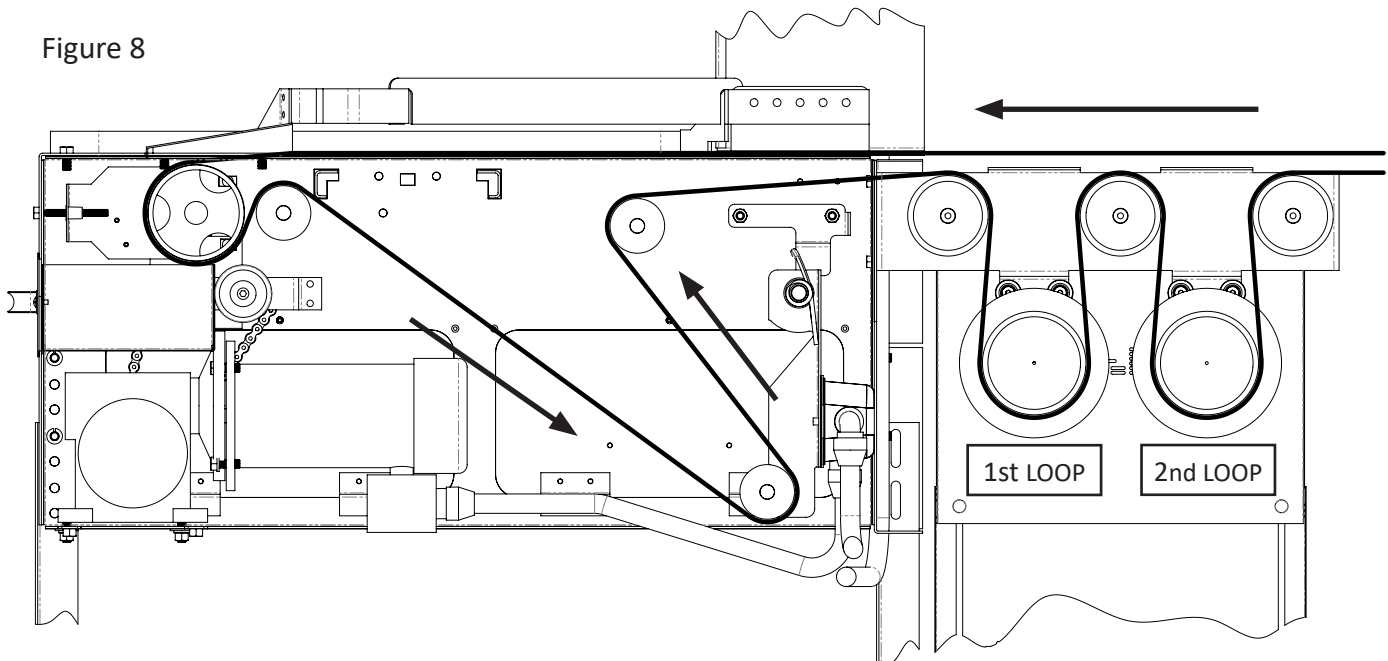
TRIM BELT END AS SHOWN HERE

- Remove the side panel on the egg collector housing and the top cover on the take-up.
- Thread belt with both weights installed (Figure 8) for table end belt threading . Continue threading as detailed in step 14.



If belt is installed at warm temperatures such as 80 DEGREES OR WARMER, the belt may contract enough to become tight if the temperature in the barn becomes much lower. The take ups **MUST** be checked periodically to know where the weights are. If they are at the top during colder temperatures, the belt may need lengthened by adding a section of belt, **BUT NOT AT THE ORIGINAL JOINT.**

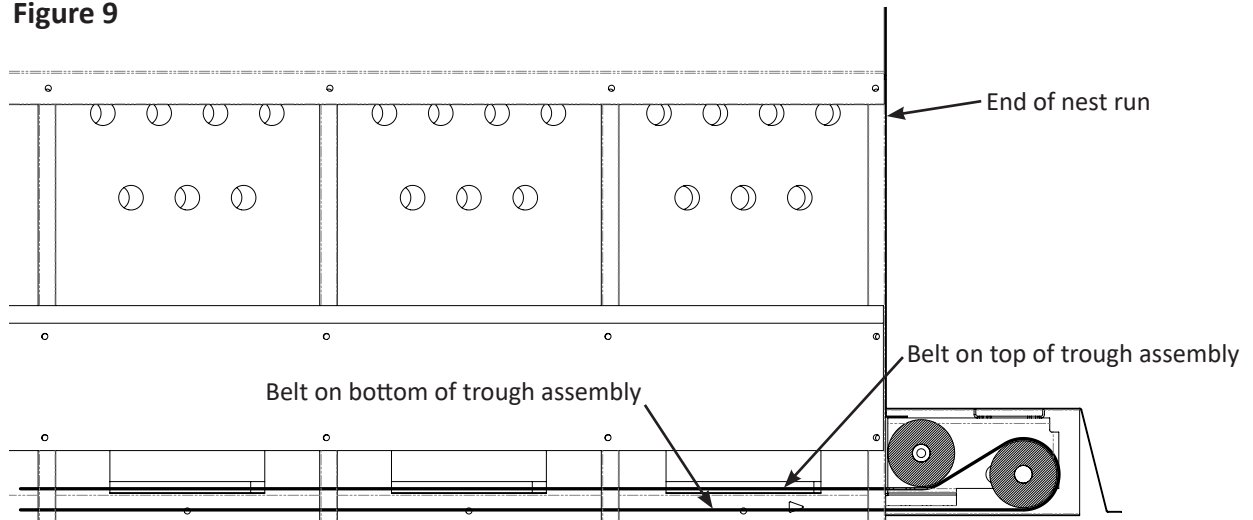
Figure 8



Installing the Polypropylene Egg Belt - continued

14. After threading the polypropylene belt through the egg collector table, take-up, and pulling through nest trough assemblies, now thread through the end belt return (Figure 9) and pull the belt end back through to the other belt end at the egg collector table. Clamp belt ends into place and tighten belt so that both weights are at the top bearings. Connecting, trimming, lacing and securing the belt are detailed below and on the next page.

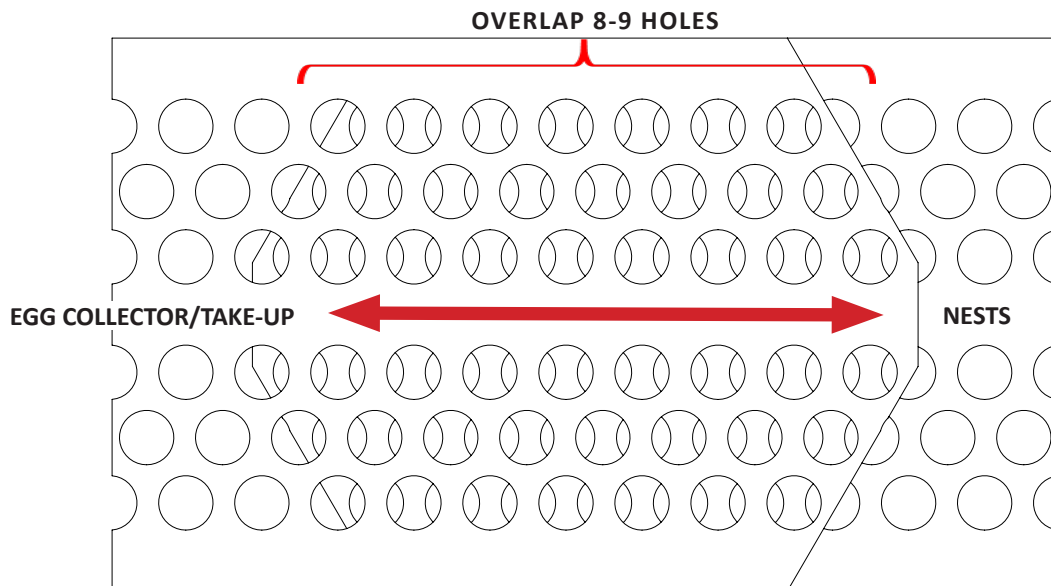
Figure 9



Connect the Belt Ends

15. After you have completely threaded the belt, BE SURE YOU HAVE ALLOWED ENOUGH BELT FOR THE 2 LOOPS AT THE TAKE-UP (Figure 8). Trim this belt end in the same manner as instructed before (Figure 7). Overlap the ends by 8-9 holes (at the side of the belt). **MAKE SURE THE TOP BELT IS POINTING AT THE NEST.** When overlapping the holes make sure they are not directly above each other, they should be staggered (Figure 10).

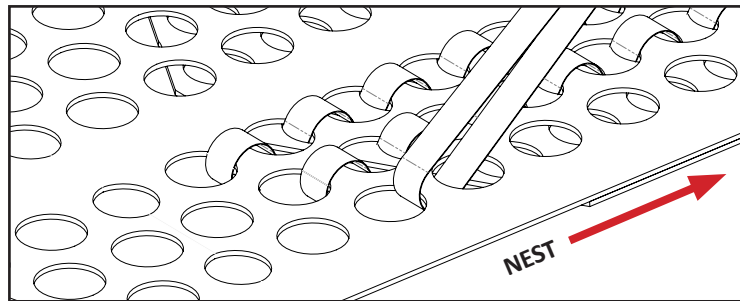
Figure 10



Belt Lacing

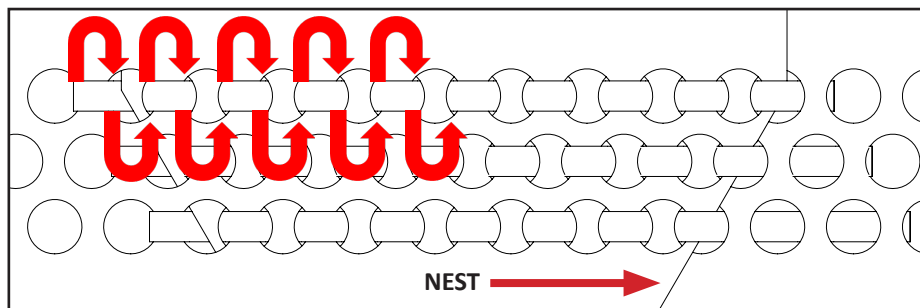
16. Cut six pieces of belt strapping to a length of approximately 28" to weave through the belts, starting at the table end of the belt. Fold each piece of strapping in half, and thread each strap through the belt by placing the fold into a belt hole, one hole before the overlap (Figure 11).

Figure 11



17. Then weave each half of each strap in and out of each belt hole opening, so that the strapping is doubled for double thickness (Figure 12).

Figure 12

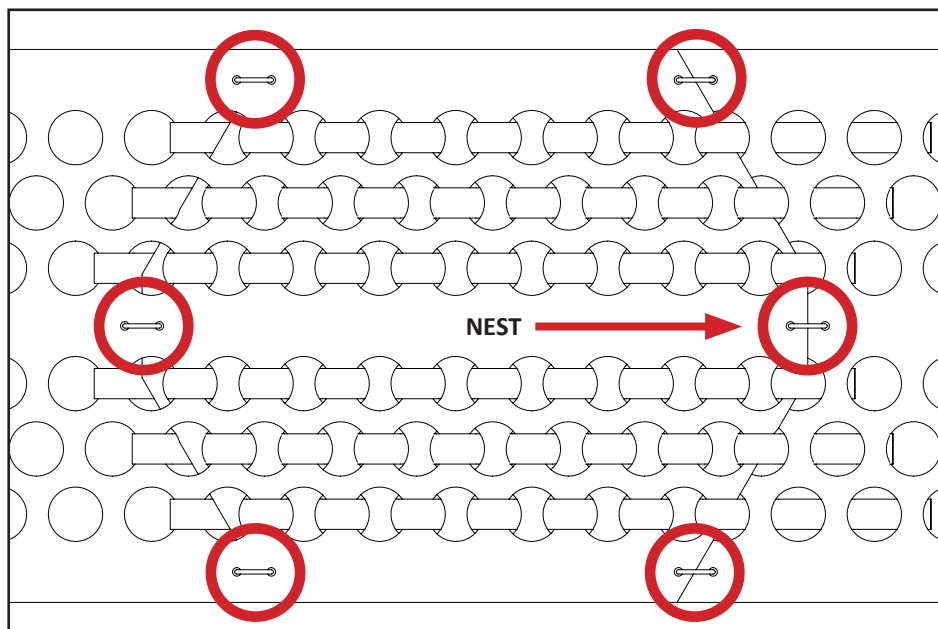


LACE AS SHOWN HERE

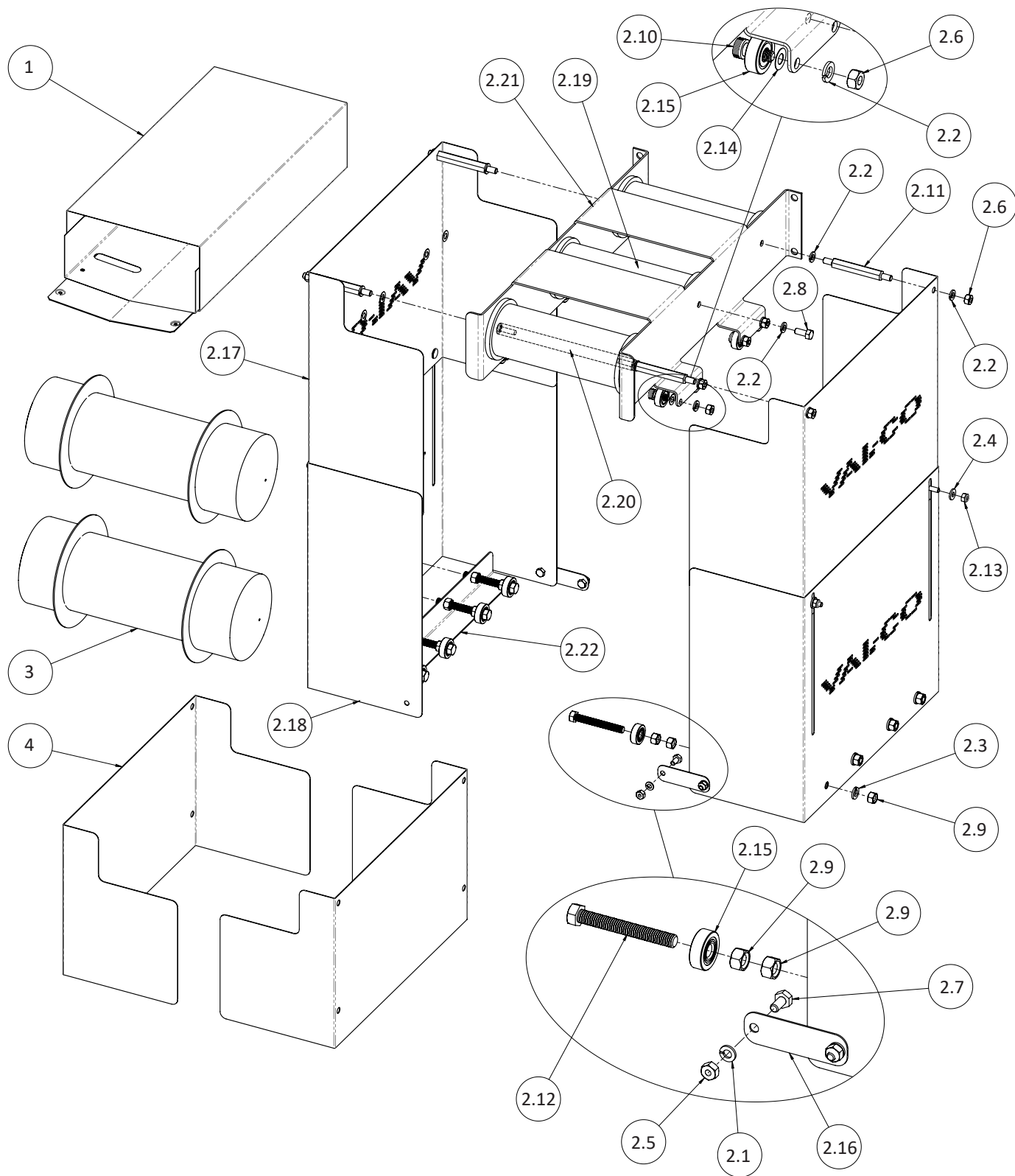
Securing the Belt Lacing

18. After all six rows of holes have been laced, drill small holes at both sides of the belt through each overlapped end and in the single layer of belt (Figure 12). Then use thread through each hole to secure the edges of the belt ends tightly.

Figure 13



Take-Up Kit - Exploded View



Take-Up Kit - Parts List

ITEM #	PART #	DESCRIPTION	QTY
TAKE UP ASSEMBLY KIT			
1	410943	18" CONNECTOR TROUGH W/COVER	1
2	413540	8" POLY BELT TAKE UP ASSEMBLY	1
2.1	010251	1/4" SPLIT LOCK WASHER	4
2.2	010252	5/16" SPLIT LOCK WASHER	18
2.3	010253	3/8" SPLIT LOCK WASHER	8
2.4	010424	1/4" FLAT WASHER	4
2.5	010602	1/4-20 HEX NUT	4
2.6	010603	5/16" FINISHED NUT	12
2.7	010615	1/4-20 X 1/2" HEX BOLT	4
2.8	010643	5/16-18 X 3/4" HEX BOLT	2
2.9	011115	3/8-16 HEX NUT	24
2.10	011393	.375" X .375" SHOULDER BOLT	8
2.11	011398	5/16-18 X .500" X 3" MALE/MALE STANDOFF	4
2.12	011399	3/8-16 X 3" FULL THREAD HEX BOLT	8
2.13	012793	1/4-20 NYLOCK NUT	4
2.14	412424	.313" X .625" X .015" SHIM	8
2.15	412548	.375" X 1.125" BEARING	16
2.16	412558	CONNECTOR PLATE, GUARD	2
2.17	413541	UPPER GUARD, 8" TAKE UP	2
2.18	413542	LOWER GUARD, 8" TAKE UP	2
2.19	413543	3.5" X 8.44" PULLEY	3
2.20	413544	.625" X 8.55" PULLEY SHAFT	3
2.21	413547	BRACKET, 8" TAKE UP	1
2.22	413561	ANGLE, SUPPORT, GUARD	2
3	413545	WEIGHT, 8" TAKE UP	2
4	413558	EXTENSION GUARD, 8" TAKE UP	2

North America:

Phone: 800.99VALCO
(800.998.2526)
Fax: 419.678.2200
Email: sales@val-co.com



990180
6-14-2018
TRC

International:

Phone: (+1) 419.678.8731
Fax: (+1) 419.678.2200
Email: intl.sales@val-co.com