



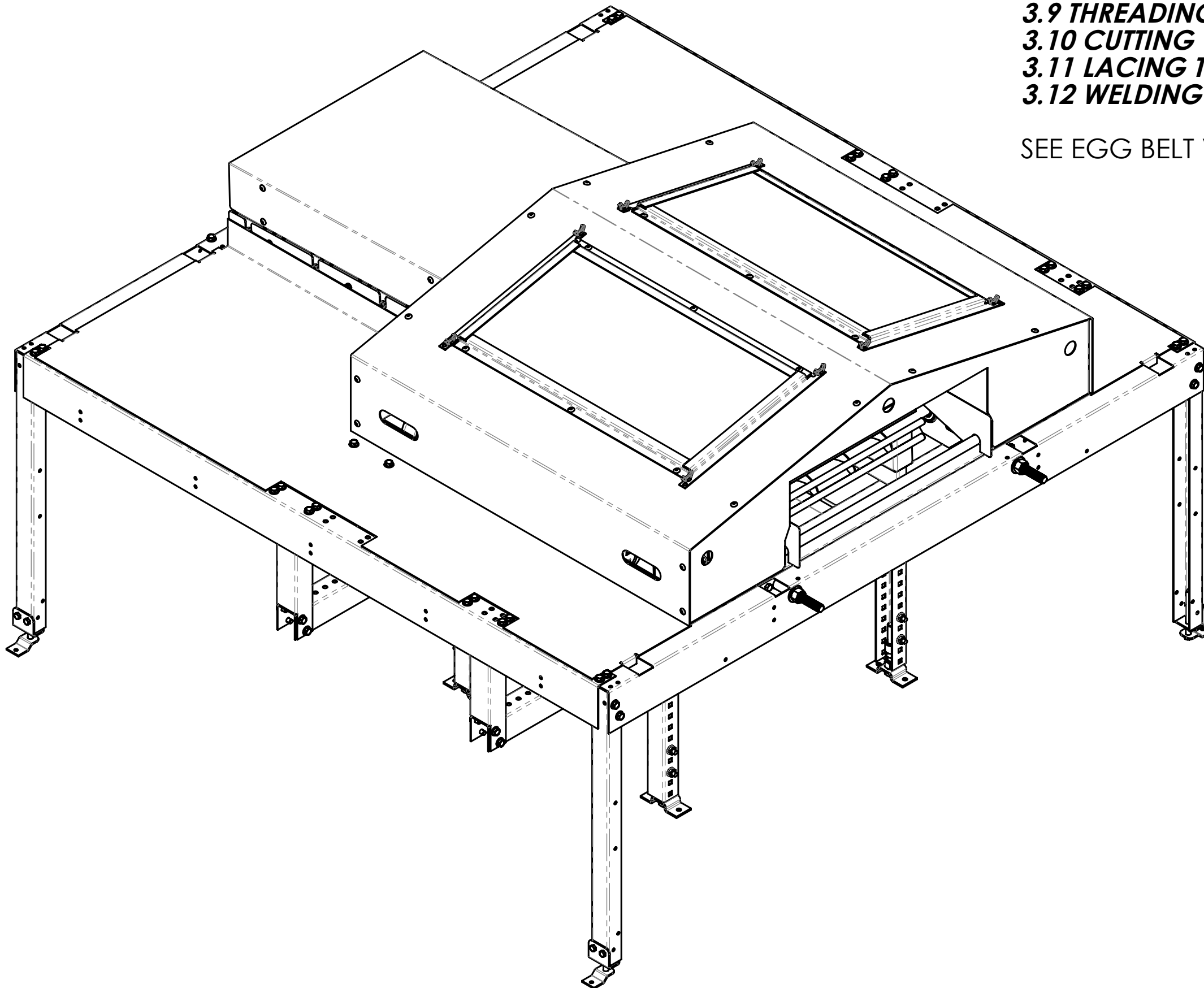
COMMUNITY NEST INLINE EGG BELT TRANSFER INSTALLATION INSTRUCTIONS

TO INSTALL THE INLINE EGG BELT TRANSFER SYSTEM, USE THESE INSTRUCTIONS AS A SUPPLEMENT TO THE 990004 COMMUNITY NEST INSTALLATION MANUAL.

THESE INSTRUCTIONS ARE TO BE USED IN CONJUNCTION WITH THE FOLLOWING CHAPTERS FROM THE COMMUNITY NEST INSTALLATION MANUAL:

- 2.5 SUB-ASSEMBLY - IDLER FRAME**
- 2.6 SUB-ASSEMBLY - EGG BELT DRIVE UNIT WITH LEGS**
- 2.7 SUB-ASSEMBLY - EGG BELT EXTENDER COVER**
- 3.1 EGG BELT DRIVE UNIT / EGG BELT EXTENDER COVER**
- 3.5 EGG BELT ASSEMBLY - LAYING THE BELT ONTO THE FRAME**
- 3.6 EGG BELT ASSEMBLY - THREADING BELT THROUGH THE EGG BELT EXTENDER COVER**
- 3.7 EGG BELT ASSEMBLY - THREADING BELT THROUGH THE EGG BELT DRIVE UNIT**
- 3.9 THREADING THE EGG BELT THROUGH THE IDLER AND LACING**
- 3.10 CUTTING THE EGG BELT - (FOR LACING OR WELDING)**
- 3.11 LACING THE EGG BELT ENDS**
- 3.12 WELDING THE EGG BELT ENDS**


SEE EGG BELT VFD CONTROL FOR ELECTRICAL INSTALLATION.



990090

SHEET 1

REV.
-

UNSPECIFIED TOLERANCES 2 PLACE ±.060 3 PLACE ±.030 4 PLACE ±.010 HOLE DIA. ±.010 ANGULAR ± 1°		DIMENSIONS ARE IN INCHES DIMENSIONS IN () ARE MILLIMETERS UNLESS OTHERWISE SPECIFIED. DO NOT SCALE		 VALCO COMPANIES, INC. PO BOX 8 NEW HOLLAND, PA 17557	
DATE 8/2/13		DRAWN TRC		DESCRIPTION 1 INSTRCT, INLINE EGGBELT TRANS,	
CHECK		WEIGHT		DESCRIPTION 2 COMMUNITY NEST	
SCALE 1:8		SHEET 1 OF 6		990090	
This drawing and any print thereof is the property of VALCO COMPANIES INC. and is subject to return on request by this company. The information shown is confidential and the recipient by accepting this drawing agrees not to use any information contained thereon in any manner which will be detrimental to VALCO COMPANIES INC.				REV. -	

ATTACH TWO 631234 RAILS TO EACH 630855 DRIVE UNIT USING EIGHT 690215 SCREWS & EIGHT 690020 NUTS, AS SHOWN IN FIGURE 1.

NOTE ORIENTATION OF 631234 RAILS: PLACE WIDE END TO FRONT OF DRIVE UNIT TO CREATE DESIRED ANGLE OF TILT.

ATTACH TWO 630195 SUPPORTS TO THE 631234 RAILS USING EIGHT 690215 SCREWS & EIGHT 690020 NUTS, AS SHOWN IN FIGURE 1.

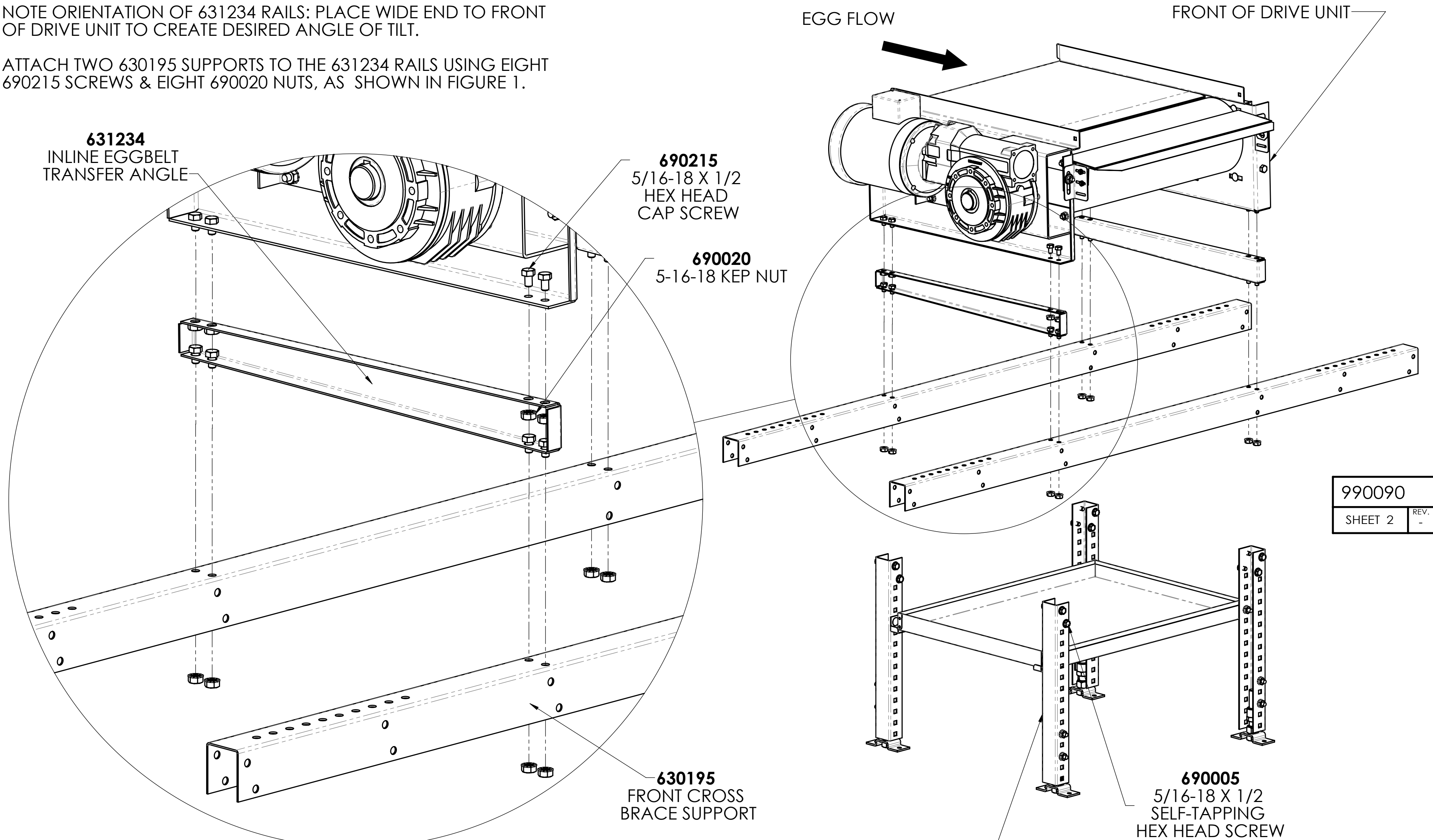



FIGURE 1

REFER TO CHAPTER **2.6 SUB-ASSEMBLY - EGG BELT DRIVE UNIT WITH LEGS** FROM THE COMMUNITY NEST INSTALLATION MANUAL TO FINISH ASSEMBLING AND ATTACHING LEGS TO DRIVE UNIT IF USING LEG STAND VERSION OF COMMUNITY NEST. FOR HIGHRISE SYSTEMS SUPPORT DRIVE UNIT WEIGHT ACCORDINGLY.

990090
SHEET 2 REV. -

UNSPECIFIED TOLERANCES 2 PLACE ±.060 3 PLACE ±.030 4 PLACE ±.010 HOLE DIA. ±.010 ANGULAR ± 1°		DIMENSINS ARE IN INCHES DIMENSIONS IN () ARE MILLIMETERS UNLESS OTHERWISE SPECIFIED. DO NOT SCALE		 VALCO COMPANIES, INC. PO BOX 8 NEW HOLLAND, PA 17557	
DATE 8/2/13		DRAWN TRC		DESCRIPTION 1 INSTRCT, INLINE EGGBELT TRANS,	
CHECK		WEIGHT		DESCRIPTION 2 COMMUNITY NEST	
SCALE 1:6		SHEET 2 OF 6		990090	
				REV. -	

630193
EGG TRANSFER
ASSEMBLY

ATTACH TWO 630329 SUPPORTS TO EACH 630855 DRIVE UNIT USING TWO 690027 BOLTS, TWO 690035 WASHERS & TWO 690020 NUTS, AS SHOWN IN FIGURE 2.

ATTACH ONE 630193 TRANSFER TO EACH PAIR OF 630329 SUPPORTS USING FOUR 690010 SCREWS & FOUR 690012 NUTS (USE TOP TWO SLOTS), AS SHOWN IN FIGURE 2.

REFER TO **APPENDIX 48** IN COMMUNITY NEST INSTALLATION MANUAL FOR COMPLETE BREAKDOWN OF THE EGG TRANSFER.

690012
10-24 KEP NUT

690010
10-24 X 3/8
MACHINE SCREW

630329
EGG TRANSFER
SUPPORT

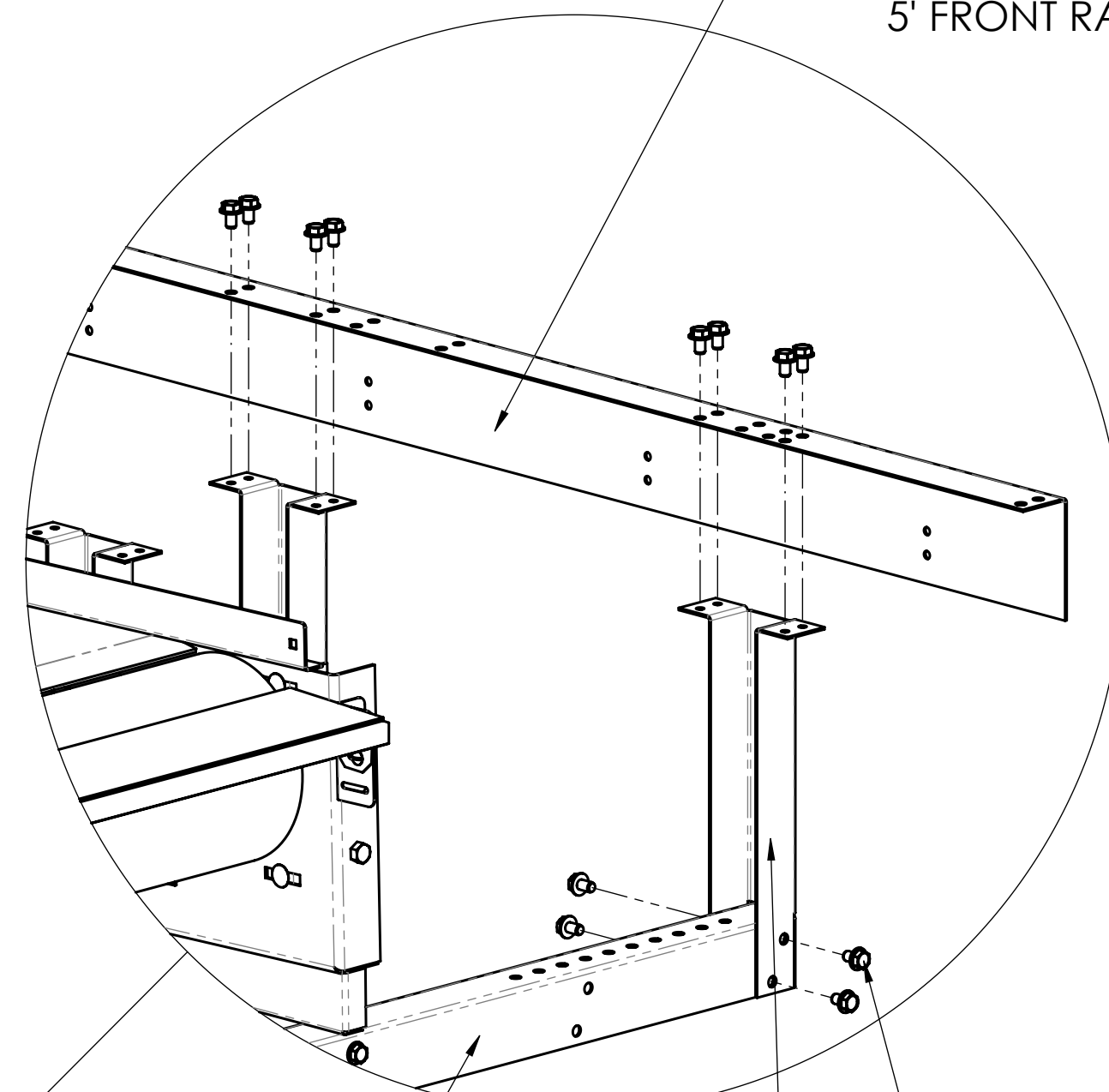
690035
5/16 FLAT
WASHER

690020
5/16-18 KEP NUT

690027
5/16-18X 3/4
CARRIAGE BOLT

FIGURE 2

630799
(OR **630172**, OR **631248**)
5' FRONT RAIL



630195
FRONT CROSS
BRACE SUPPORT

FIGURE 3

631235
INLINE EGGBELT
TRANSFER CHANNEL

690005
5/16-18 X 1/2
SELF-TAPPING
HEX HEAD SCREW

ATTACH SIX 631235 CHANNELS TO TWO 630195 SUPPORTS USING TWENTY FOUR 690005 SCREWS, AS SHOWN IN MAIN VIEW AND FIGURE 3.


ATTACH TWO 630799 RAILS (OR 630172, OR 631248) TO ASSEMBLED FRAME USING SIXTEEN 690005 SCREWS, AS SHOWN IN MAIN VIEW AND FIGURE 3.

630329
EGG TRANSFER
SUPPORT

631235
INLINE EGGBELT
TRANSFER CHANNEL
(ASSEMBLY ORIENTATION
REPEATED ON OTHER SIDE)

990090

SHEET 3 REV.

UNSPECIFIED TOLERANCES 2 PLACE ±.060 3 PLACE ±.030 4 PLACE ±.010 HOLE DIA. ±.010 ANGULAR ±1°	DIMENSINS ARE IN INCHES DIMENSIONS IN () ARE MILLIMETERS UNLESS OTHERWISE SPECIFIED. DO NOT SCALE	 VALCO	VALCO COMPANIES, INC. PO BOX 8 NEW HOLLAND, PA 17557	
<p>This drawing and any print thereof is the property of VALCO COMPANIES INC. and is subject to return on request by this company. The information shown is confidential and the recipient by accepting this drawing agrees not to use any information contained thereon in any manner which will be detrimental to VALCO COMPANIES INC.</p>	DATE 8/2/13	DESCRIPTION 1	INSTRCT, INLINE EGGBELT TRANS,	
	DRAWN TRC	DESCRIPTION 2	COMMUNITY NEST	
	CHECK			
	WEIGHT			
SCALE 1:6	SHEET 3 OF 6		990090	REV -

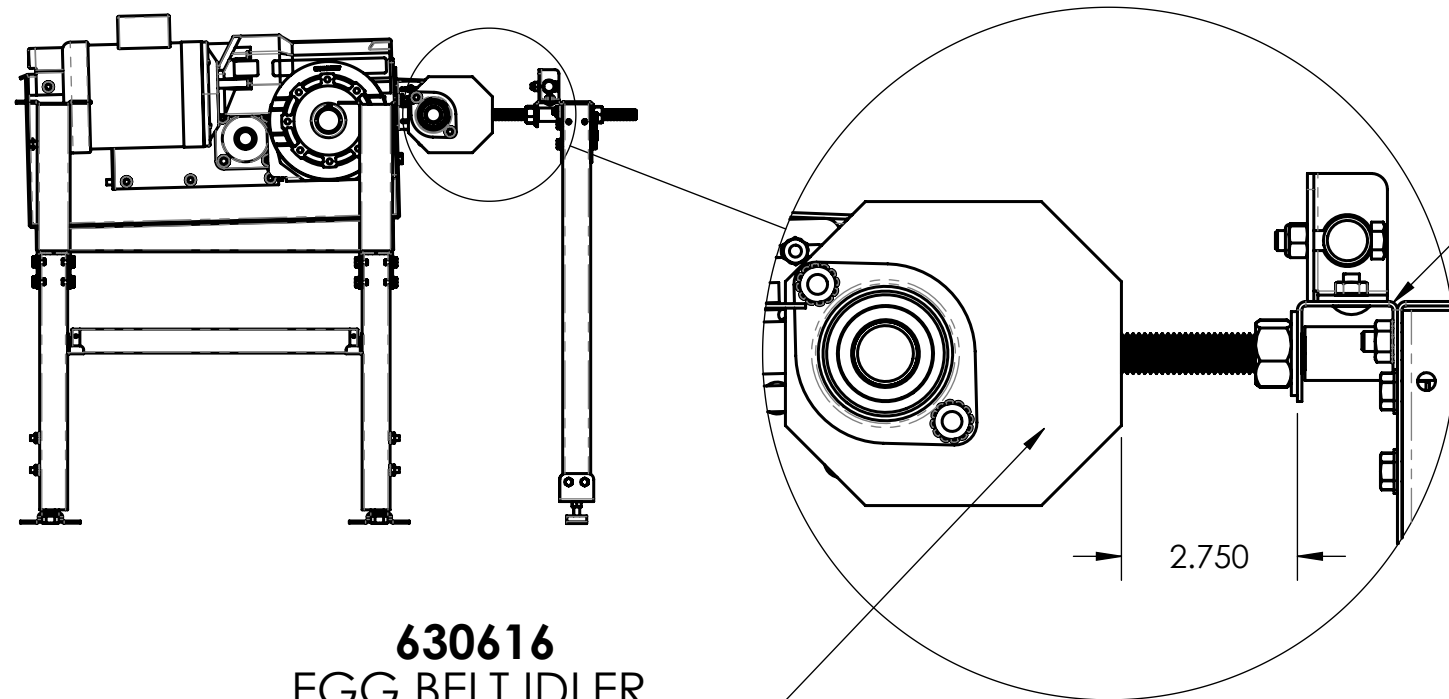


FIGURE 4

ASSEMBLE IDLER AS SHOWN IN CHAPTER **2.5 SUB-ASSEMBLY - IDLER FRAME** OF COMMUNITY NEST INSTALLATION MANUAL.

WHEN SETTING POSITION OF 630616 BEARING SUPPORT, LOCATE BACK EDGE OF PLATE AND FACE OF 630535 CHANNEL 2.75" APART, AS SHOWN ABOVE IN FIGURE 4.

ATTACH TWO 631236 GUARDS TO EACH 630855 DRIVE UNIT USING TWO 690058 BOLTS, TWO 690038 WASHERS & TWO 690003 NUTS, AS SHOWN IN FIGURE 5.

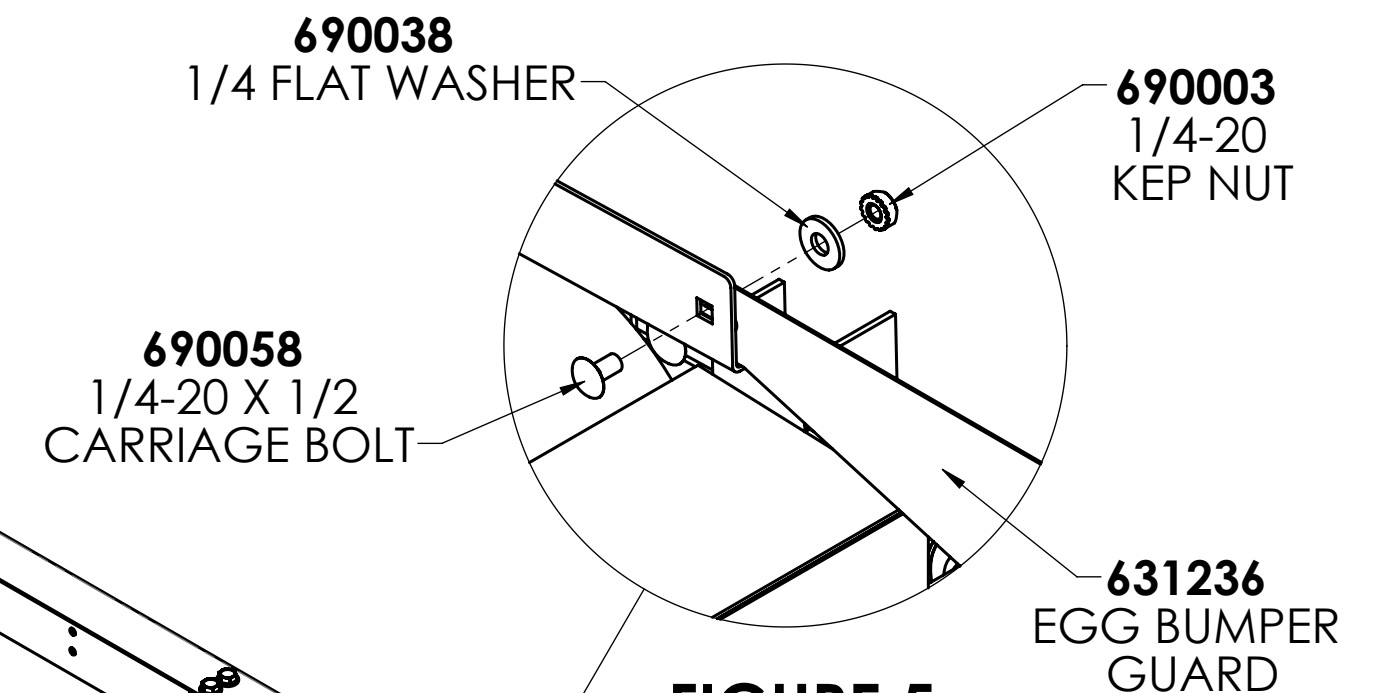
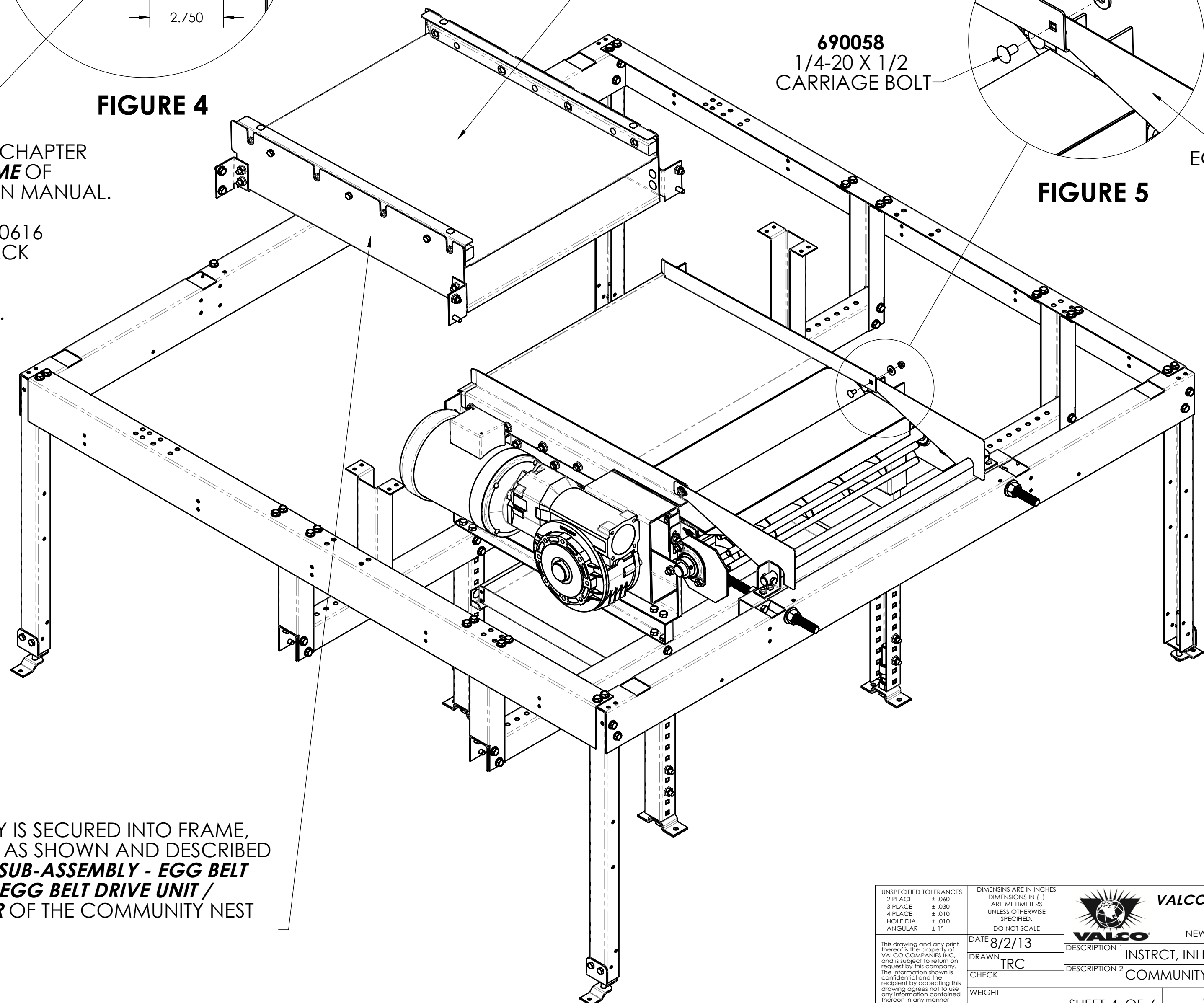



FIGURE 5



AFTER DRIVE UNIT ASSEMBLY IS SECURED INTO FRAME, ATTACH 631247-PH COVER AS SHOWN AND DESCRIBED IN DETAIL IN CHAPTERS **2.7 SUB-ASSEMBLY - EGG BELT EXTENDER COVER** AND **3.1 EGG BELT DRIVE UNIT / EGG BELT EXTENDER COVER** OF THE COMMUNITY NEST INSTALLATION MANUAL.

990090

SHEET 4 REV. -

UNSPECIFIED TOLERANCES 2 PLACE ± .060 3 PLACE ± .030 4 PLACE ± .010 HOLE DIA. ± .010 ANGULAR ± 1°	DIMENSINS ARE IN INCHES DIMENSIONS IN () ARE MILLIMETERS UNLESS OTHERWISE SPECIFIED. DO NOT SCALE		 VALCO COMPANIES, INC. PO BOX 8 NEW HOLLAND, PA 17557
	DATE 8/2/13 DRAWN TRC CHECK WEIGHT SCALE 1:6	DESCRIPTION 1 INSTRCT, INLINE EGGBELT TRANS, DESCRIPTION 2 COMMUNITY NEST	
SHEET 4 OF 6			990090 REV. -

WHEN SETTING POSITION OF 630193 TRANSFER IN RELATIONSHIP TO 630087 ROLLER, ALLOW ENOUGH SPACE FOR THE BELT SPLICE (TWO EGG BELT THICKNESSES AND LACING, IF USED) TO FIT BETWEEN THE DRIVE ROLLER AND TRANSFER WITHOUT INTERFERENCE, AS SHOWN IN FIGURE 6.

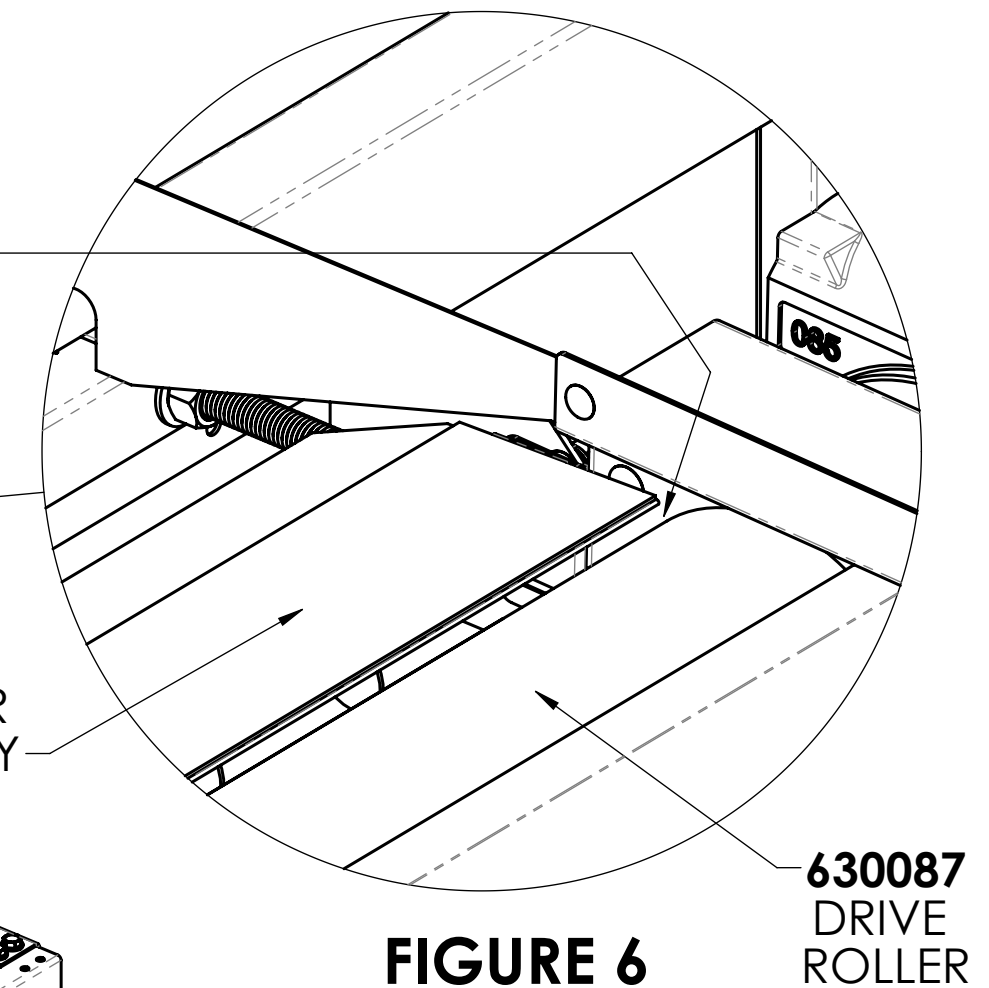
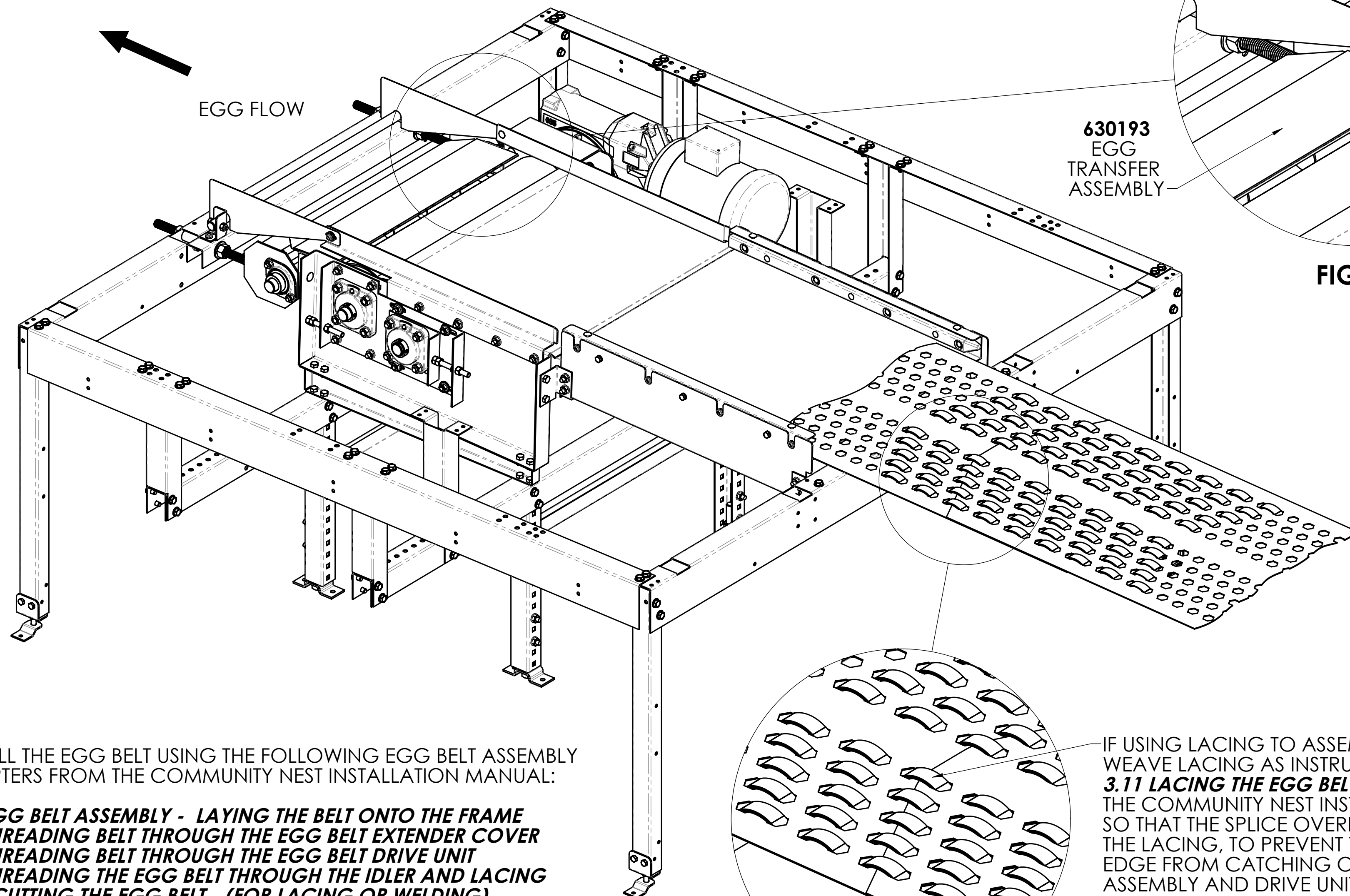


FIGURE 6



INSTALL THE EGG BELT USING THE FOLLOWING EGG BELT ASSEMBLY CHAPTERS FROM THE COMMUNITY NEST INSTALLATION MANUAL:

- 3.5 EGG BELT ASSEMBLY - LAYING THE BELT ONTO THE FRAME
- 3.6 THREADING BELT THROUGH THE EGG BELT EXTENDER COVER
- 3.7 THREADING BELT THROUGH THE EGG BELT DRIVE UNIT
- 3.9 THREADING THE EGG BELT THROUGH THE IDLER AND LACING
- 3.10 CUTTING THE EGG BELT - (FOR LACING OR WELDING)

TO ASSEMBLE LACED BELTS:

3.11 LACING THE EGG BELT ENDS

TO ASSEMBLE WELDED EGG BELTS:

3.12 WELDING THE EGG BELT ENDS

IF USING LACING TO ASSEMBLE EGG BELTS, WEAVE LACING AS INSTRUCTED IN CHAPTER **3.11 LACING THE EGG BELT ENDS** FROM THE COMMUNITY NEST INSTALLATION MANUAL SO THAT THE SPLICE OVERLAP IS COVERED BY THE LACING, TO PREVENT THE TOP TRIMMED EDGE FROM CATCHING ON THE EGG TRANSFER ASSEMBLY AND DRIVE UNIT, AS SHOWN IN FIGURE 7.

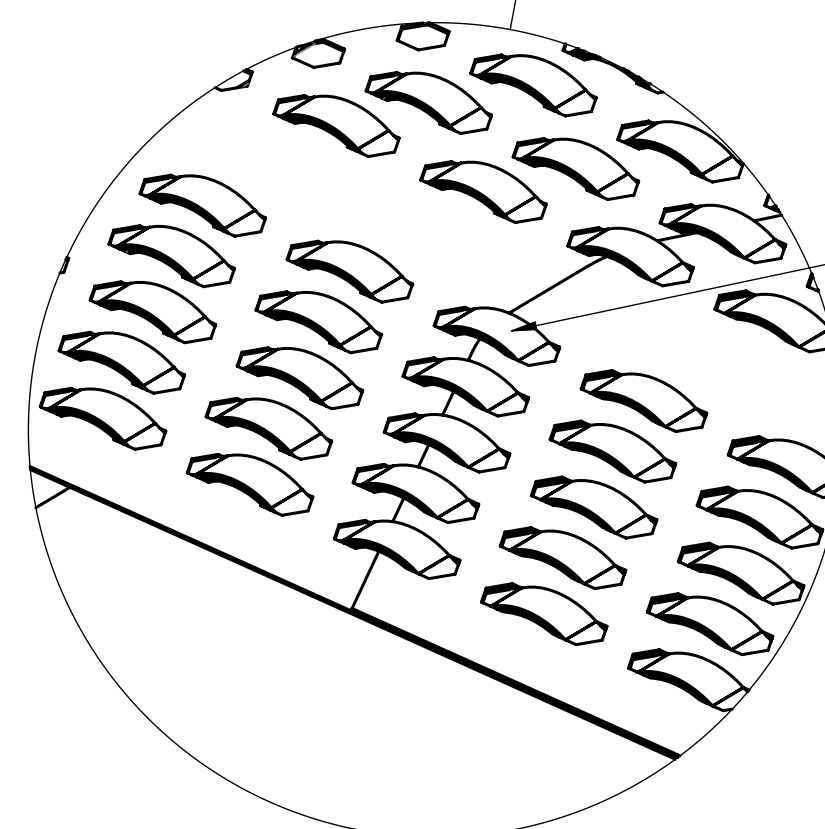



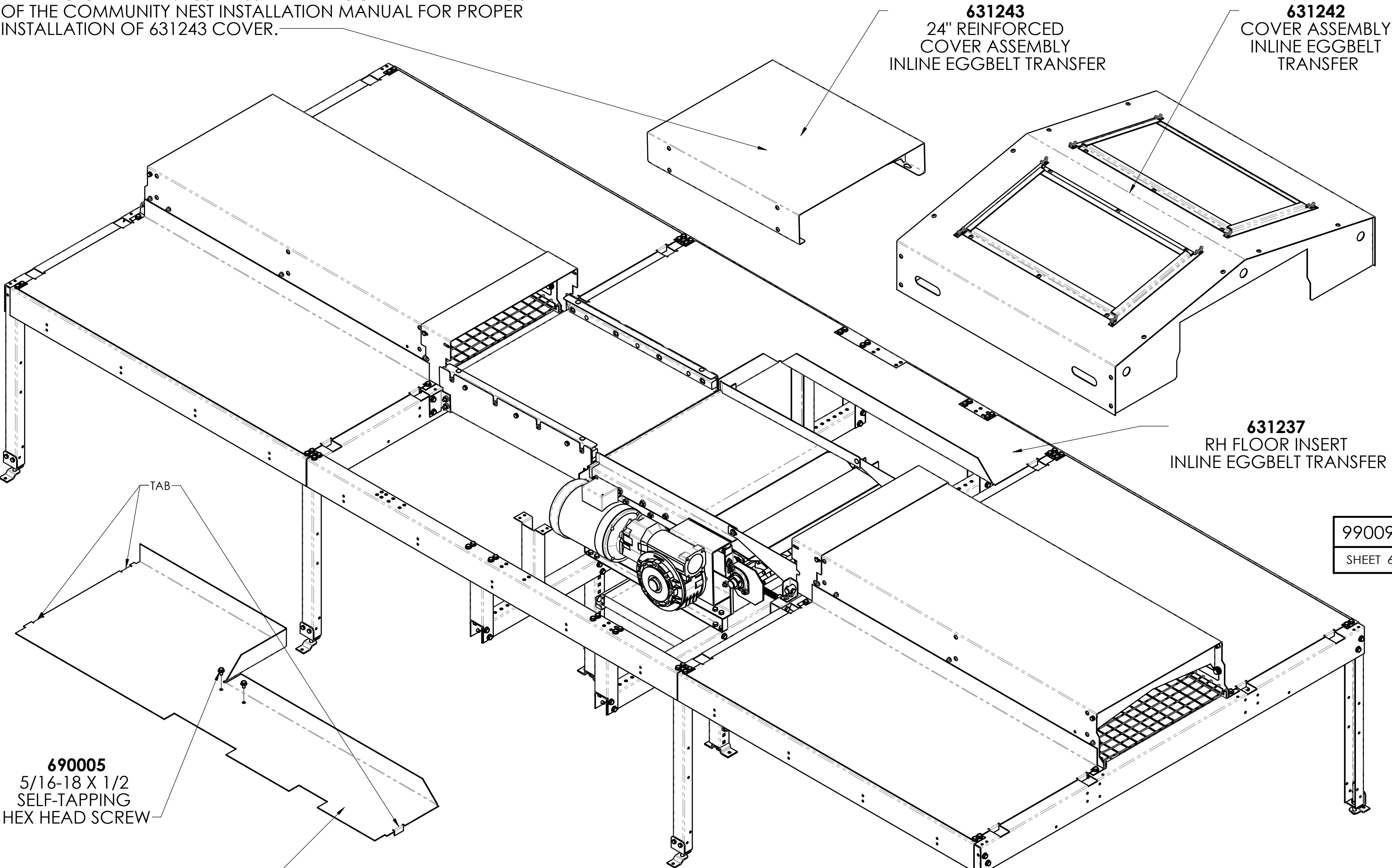
FIGURE 7

990090

SHEET 5 REV. -

<small>UNSPECIFIED TOLERANCES 2 PLACE ±.060 3 PLACE ±.030 4 PLACE ±.010 HOLE DIA. ±.010 ANGULAR ±1°</small>	<small>DIMENSINS ARE IN INCHES DIMENSIONS IN () ARE MILLIMETERS UNLESS OTHERWISE SPECIFIED. DO NOT SCALE</small>	 VALCO COMPANIES, INC. <small>PO BOX 8 NEW HOLLAND, PA 17557</small>	<small>DATE</small> 8/2/13 <small>DRAWN</small> TRC <small>CHECK</small> <small>WEIGHT</small> <small>SCALE</small> 1:8	<small>DESCRIPTION 1</small> INSTRCT, INLINE EGGBELT TRANS, <small>DESCRIPTION 2</small> COMMUNITY NEST	<small>REV.</small> -

REFER TO CHAPTER **2.7 SUB-ASSEMBLY - EGG BELT EXTENDER COVER**
OF THE COMMUNITY NEST INSTALLATION MANUAL FOR PROPER
INSTALLATION OF 631243 COVER.



690005
5/16-18 X 1/2
SELF-TAPPING
HEX HEAD SCREW

631238
LH FLOOR INSERT
INLINE EGGBELT TRANSFER

ATTACH 631237 & 631238 INSERTS TO ASSEMBLED FRAME BY INSERTING
TABS INTO CORNERS OF CROSSARMS AND USING FOUR 690005 SCREWS
AS SHOWN IN MAIN VIEW.

PLACE 631242 COVER OVER UPTURNED FLANGES OF INSERTS TO LOCK
THE COVER INTO PLACE, AS SHOWN ON FIRST PAGE .


631243
24" REINFORCED
COVER ASSEMBLY
INLINE EGGBELT TRANSFER

631242
COVER ASSEMBLY
INLINE EGGBELT
TRANSFER

631237
RH FLOOR INSERT
INLINE EGGBELT TRANSFER

990090

SHEET 6 REV. -

UNSPECIFIED TOLERANCES 2 PLACE ±.060 3 PLACE ±.030 4 PLACE ±.010 HOLE DIA. ±.010 ANGULAR ± 1°		DIMENSINS ARE IN INCHES DIMENSIONS IN () ARE MILLIMETERS UNLESS OTHERWISE SPECIFIED. DO NOT SCALE		 VALCO COMPANIES, INC. PO BOX 8 NEW HOLLAND, PA 17557	
DATE 8/2/13		DRAWN TRC		DESCRIPTION 1 INSTRCT, INLINE EGGBELT TRANS,	
CHECK		WEIGHT		DESCRIPTION 2 COMMUNITY NEST	
SCALE 1:8		SHEET 6 OF 6		990090	
This drawing and any print thereof is the property of VALCO COMPANIES INC. and is subject to return on request by this company. The information shown is confidential and the recipient by accepting this drawing agrees not to use any information contained thereon in any manner which will be detrimental to VALCO COMPANIES INC.				REV. -	