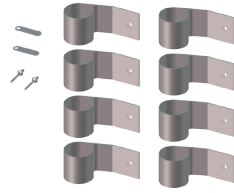




# EGG GUARD/ SIDE BELT NEST

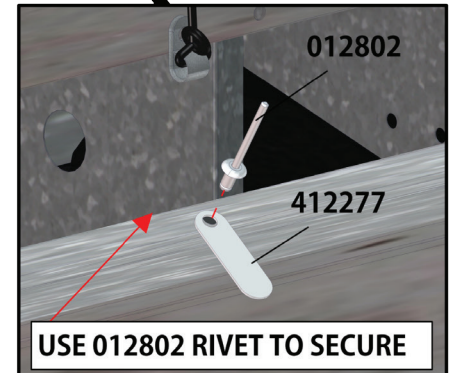
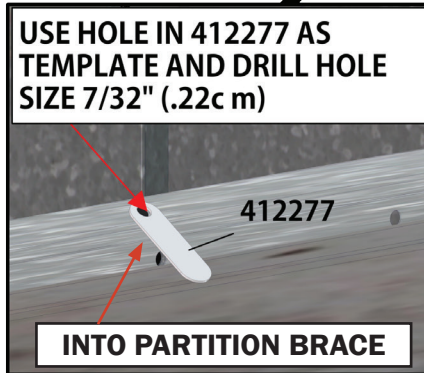
## 412268 Installation Kit



### Installation

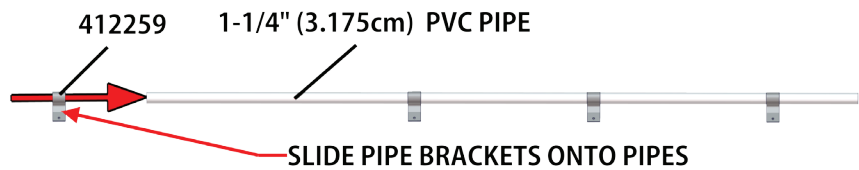
1. Install 412277 Trough Cover Clips, included with the 412268 Kit, by first **drilling a 7/32" (.22cm) hole in the center of the Partition Brace**, as shown in Figure 1. (You may use the Trough Cover Clip as a template.) One Trough Cover Clip is used for each side of each nest. Secure the 412277 clips using the 012802 rivets. *(The Trough Cover Clip is used to secure the Trough Covers with the Egg Guard Pipes installed. To open the Trough Covers simply pivot the 412277 Trough Cover Clips out of the way.)*

Figure 1



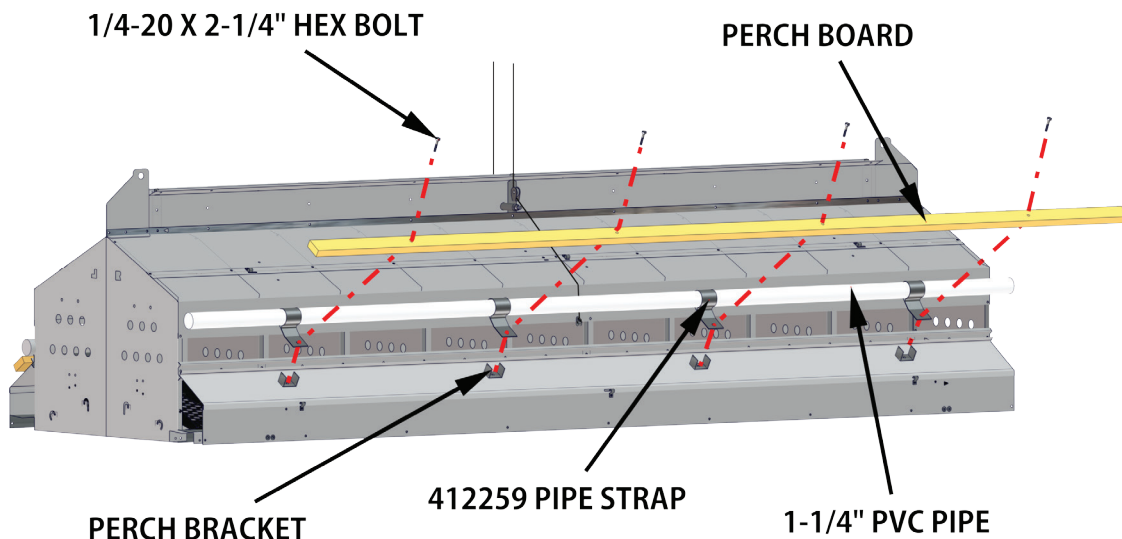
2. Slide on (4) 412259 Pipe Straps onto 1-1/4" (3.175cm) PVC pipe (not supplied by VAL-CO®), shown in Figure 2.

Figure 2



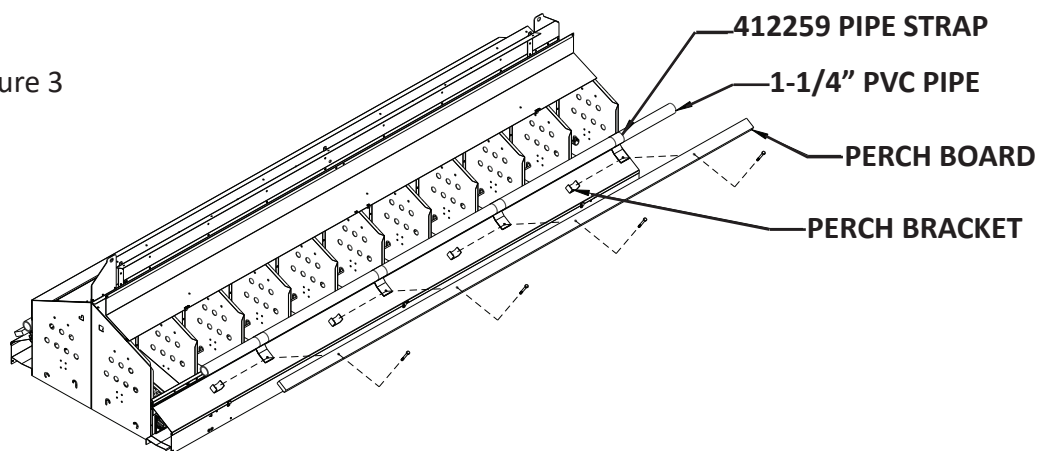
3. Place **FLAT** surface of Pipe Strap under Perch Board (between Perch Board and 412015 Perch Bracket) shown in Figure 3.
4. Place 1/4-20 X 2-1/4" Hex Bolts, supplied with nest, through Perch Board, Pipe Straps, Perch Brackets and Egg Trough Cover and secure with 1/4 Nylock Nuts (not shown).

Figure 3



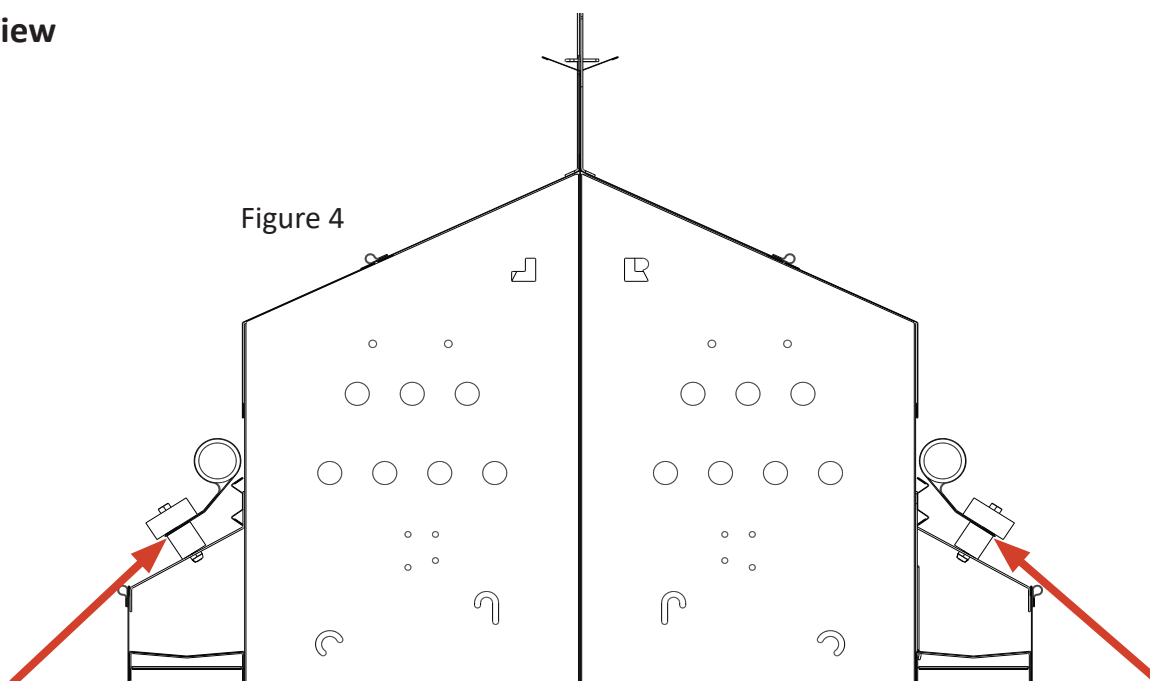
## Full View

Figure 3



## Side View

Figure 4



**412259 PIPE STRAP POSITIONED BETWEEN PERCH BRACKET AND PERCH BOARD.**

PART #	DESCRIPTION	QTY
<b>412268 EGG GUARD/SIDE BELT NEST KIT</b>		
012802	RIVET, PIP #62 X 3/16" ALL-ALUM	2
412277	CLIP, TROUGH COVER, NEST SIDE BELT	2
412259	PIPE STRAP (order 4 pipe straps for each side of each nest length 8 per nest)	8

***1-1/4" (3.175cm) PVC pipe not included***

### North America:

Phone: 800.99VALCO  
(800.998.2526)  
Fax: 419.678.2200  
Email: [sales@val-co.com](mailto:sales@val-co.com)

**990134**

**REV(2) 8-30-2017**

Val-Co® warranty applies to this product

©2017 Valco Companies, Inc.

### International:

Phone: (+1) 419.678.8731  
Fax: (+1) 419.678.2200  
Email: [intl.sales@val-co.com](mailto:intl.sales@val-co.com)