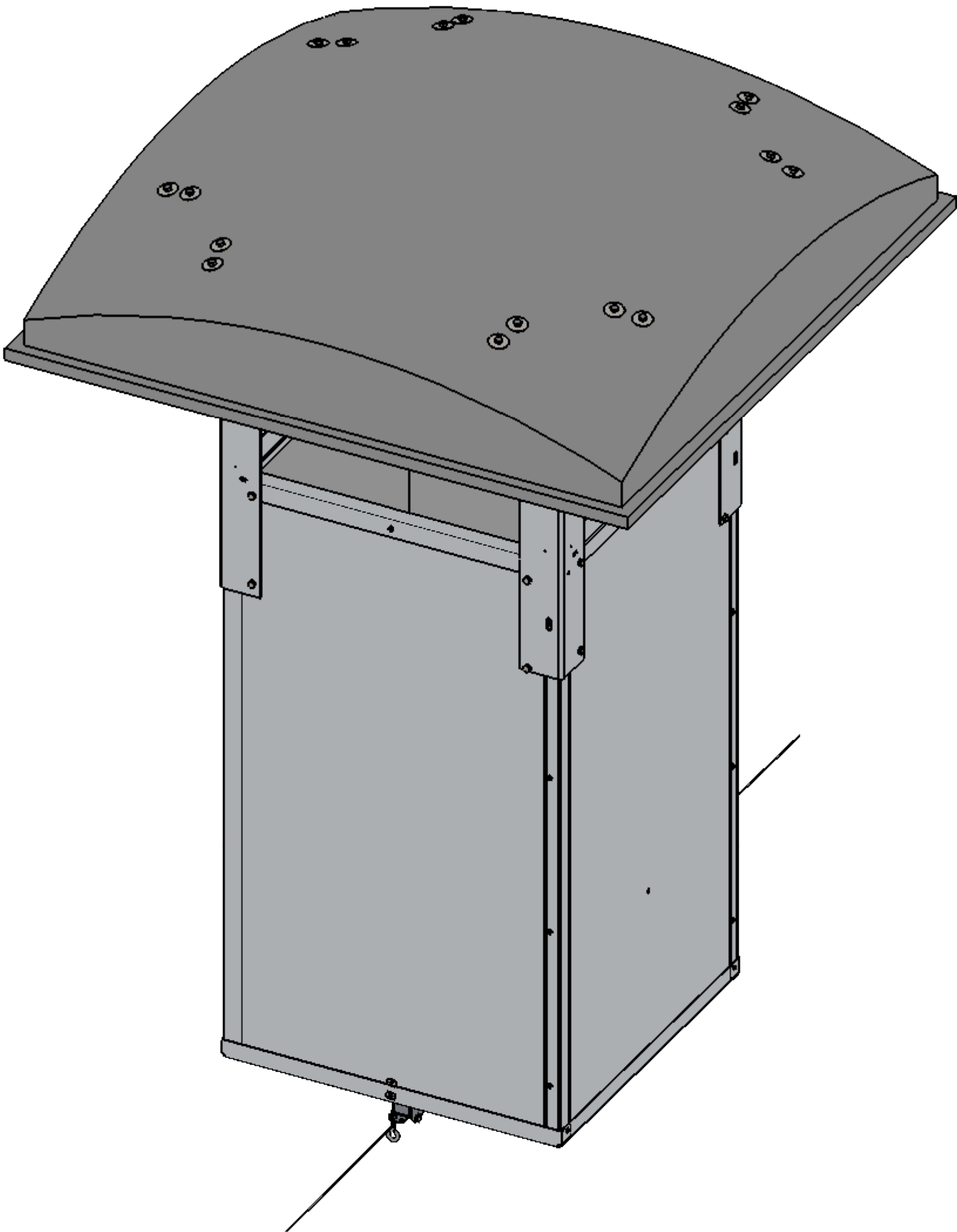



QUICK SHEET FOR 24" & 36" SWINE CHIMNEY SHAFT & DOME ASSEMBLY



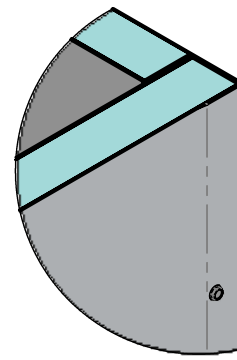
990188	
SHEET 1	REV. -

PART NUMBERS	CHIMNEY SIZE	ROUGH OPENING
812210, 812240	24" X 24" (INSIDE DIMENSIONS)	27 1/2" X 27 1/2"
812310, 812360	36" X 36" (OUTSIDE DIMENSIONS)	36 1/2" X 36 1/2"

READ THROUGH THE ENTIRE QUICK SHEET BEFORE STARTING

UNSPECIFIED TOLERANCES 2 PLACE ± .060 3 PLACE ± .030 4 PLACE ± .010 HOLE DIA. ± .010 ANGULAR ± 1°	DIMENSIONS ARE IN INCHES DIMENSIONS IN () ARE MILLIMETERS UNLESS OTHERWISE SPECIFIED. DO NOT SCALE		 VALCO COMPANIES, INC. PO BOX 8 NEW HOLLAND, PA 17557			
	DATE	11/01/17	DESCRIPTION 1 QUICKSHEET CHIMNEY SHAFT AND			
	DRAWN	RAE	DESCRIPTION 2 DOME			
	CHECK	-	WEIGHT			
<small>This drawing and any print thereof is the property of VALCO COMPANIES INC. and is subject to return on request by this company. The information shown is confidential and the recipient by accepting this drawing agrees not to use any information contained thereon in any manner which will be detrimental to VALCO COMPANIES INC.</small>		SCALE	1:8	SHEET 1 OF 8	990188	REV. -

APPLY SILICONE CAULK TO INSIDE CORNERS
TO SEAL JOINTS.



DETAIL A
SCALE 1 : 4

SHOWN WITHOUT CHIMNEY TOP

SMP8016
(24" CHIMNEY TOP & BOTTOM ASSY)
SMP8019
(36" CHIMNEY TOP & BOTTOM ASSY)

TOP

MH90256
(8-18 X 1 1/4 TEK SCREW)

MH90256
(8-18 X 1 1/4 TEK SCREW)

812036
(PANEL, 24" SWINE CHIMNEY)
812065
(PANEL, 36" SWINE CHIMNEY)

ASSEMBLY SEQUENCE

(PANELS A, B, C, & D ARE IDENTICAL)

STEP 1. PRESS PLASTIC HINGE BUSHINGS (MH90411) INTO CHIMNEY PANELS (812036 OR 812065) A & D USING THE PREDRILLED HOLES IN THE PANELS. 3/8" OF BUSHING SHOULD BE EXPOSED.

STEP 2. REMOVE PROTECTIVE RELEASE SHEET FROM OUTER FACE OF EACH PANEL. ASSEMBLE PANELS B & C (WITHOUT HINGE BUSHINGS) TO PANEL A (WITH THE HINGE BUSHING). SEE DETAIL A. FOR PROPER PANEL ASSEMBLY.

STEP 3. ASSEMBLE THE DAMPER (812021 OR ZR1717A) INTO THE ASSEMBLED PANELS BY PLACING THE DAMPER HINGE PIN INTO THE PLASTIC HINGE BUSHING IN PANEL A. NOTE THAT THE CLOSE DAMPER CABLE SHOULD ON THE BOTTOM SIDE OF THE CHIMNEY AS SHOWN.

STEP 4. ASSEMBLE PANEL D TO THE DAMPER AND OTHER PANELS.

STEP 5. ASSEMBLE TOP AND BOTTOM ASSEMBLIES (ALUMINUM CHANNELS) TO THE CHIMNEY AS SHOWN USING (2) 8-18 X 1 1/4 TEK SCREWS (MH90256) AT THE TOP AND 1 AT THE BOTTOM. NOTE THE BOTTOM SCREW IS ON THE OPPOSITE SIDE OF THE DAMPER AS THE DAMPER CABLE AND THE NOTCH IN THE BOTTOM ASSEMBLY IS DIRECTLY UNDER THE DAMPER CABLE.

STEP 6. FASTEN PANELS TOGETHER WITH (4) 8-18 X 1 1/4 TEK SCREWS (MH90256) FOR EACH PANEL USING PREDRILLED HOLES.

STEP 7. APPLY CAULK TO INSIDE CORNERS.

SMP8016
(24" CHIMNEY TOP & BOTTOM ASSY)
SMP8019
(36" CHIMNEY TOP & BOTTOM ASSY)

BOTTOM

14" (24" CHIMNEY)
17 1/8" (36" CHIMNEY)
REF

CLOSE
DAMPER CABLE

NOTCH


MH90411
(PLASTIC HINGE BUSHING)

812021
(DAMPER F/24" CHIMNEY KIT)
ZR1717A
(DAMPER F/36" CHIMNEY KIT)

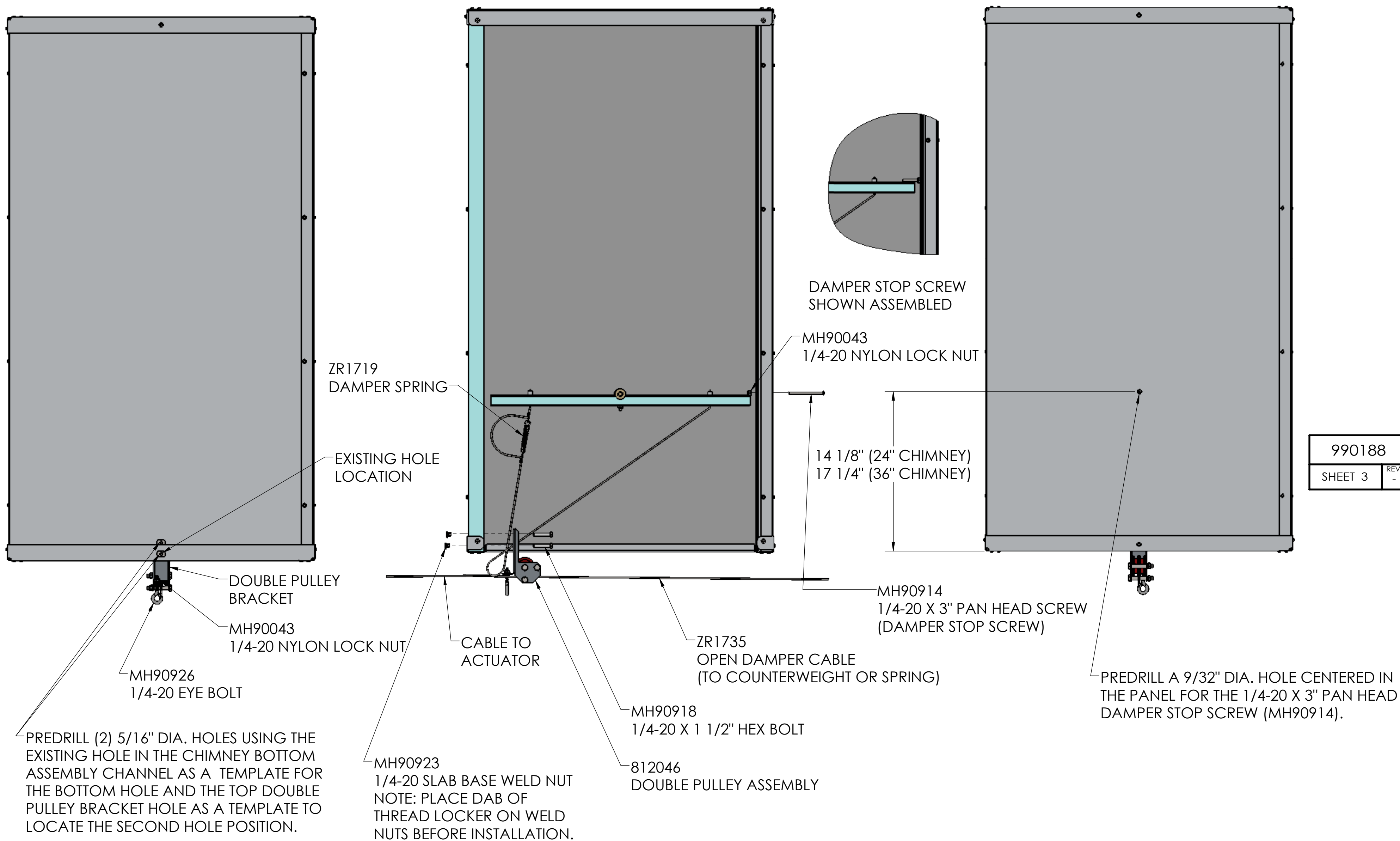
MH90256
(8-18 X 1 1/4 TEK SCREW)

990188

SHEET 2 REV. -


UNSPECIFIED TOLERANCES 2 PLACE ±.060 3 PLACE ±.030 4 PLACE ±.010 HOLE DIA. ±.010 ANGULAR ± 1°		DIMENSINS ARE IN INCHES DIMENSIONS IN () ARE MILLIMETERS UNLESS OTHERWISE SPECIFIED. DO NOT SCALE		 VALCO COMPANIES, INC. PO BOX 8 NEW HOLLAND, PA 17557	
This drawing and any print thereof is the property of VALCO COMPANIES INC. and is subject to return on request by this company. The information shown is confidential and the recipient by accepting this drawing agrees not to use any information contained thereon in any manner which will be detrimental to VALCO COMPANIES INC.		DATE 11/01/17	DESCRIPTION 1 QUICKSHEET CHIMNEY SHAFT AND		
DRAWN RAE		CHECK	DESCRIPTION 2 DOME		
WEIGHT		SCALE 1:8	SHEET 2 OF 8	990188	REV. -

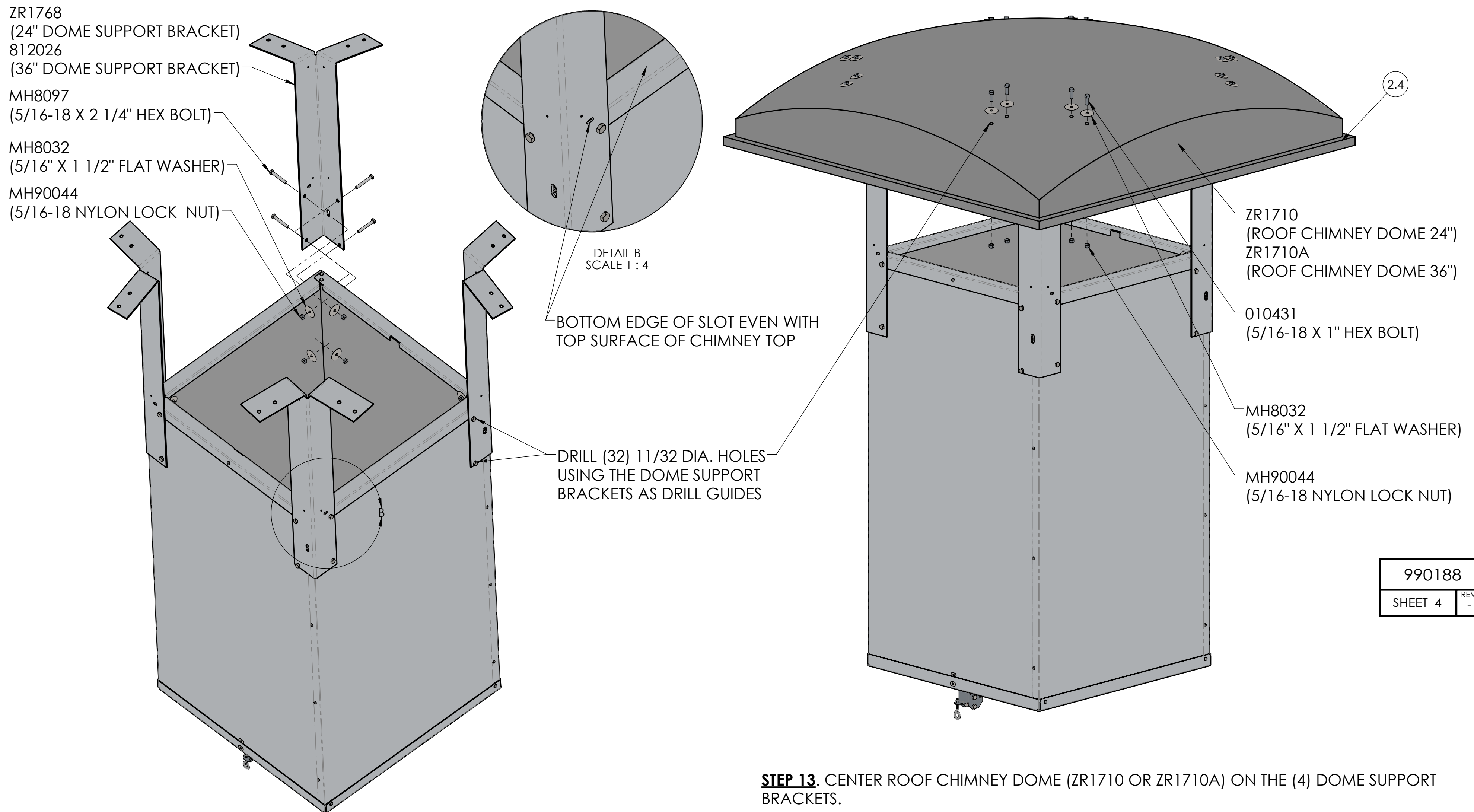
THIS VIEW SHOWN WITHOUT PANEL



990188
SHEET 3 REV. -

STEP 8. PREDRILL HOLES AND ASSEMBLE THE DOUBLE PULLEY ASSEMBLY (812046) AND THE DAMPER STOP SCREW (MH90914) AS SHOWN ABOVE. NOTE THAT THE DOUBLE PULLEY ASSEMBLY IS DIRECTLY UNDER THE DAMPER CABLE AND THE DAMPER IS ON THE LOWER SIDE OF THE DAMPER STOP SCREW. PLACE DAB OF THREAD LOCKER ON WELD NUTS BEFORE INSTALLATION.

UNSPECIFIED TOLERANCES 2 PLACE ± .060 3 PLACE ± .030 4 PLACE ± .010 HOLE DIA. ± .010 ANGULAR ± 1°	DIMENSIONS ARE IN INCHES DIMENSIONS IN () ARE MILLIMETERS UNLESS OTHERWISE SPECIFIED. DO NOT SCALE	 VALCO COMPANIES, INC. PO BOX 8 NEW HOLLAND, PA 17557
This drawing and any print thereof is the property of VALCO COMPANIES INC. and is subject to return on request by this company. The information shown is confidential and the recipient by accepting this drawing agrees not to use any information contained thereon in any manner which will be detrimental to VALCO COMPANIES INC.	DATE 11/01/17 DRAWN RAE CHECK WEIGHT SCALE 1:6	DESCRIPTION 1 QUICKSHEET CHIMNEY SHAFT AND DESCRIPTION 2 DOME SHEET 3 OF 8 990188 REV. -



990188

SHEET 4 REV. -

STEP 9. LOCATE DOME SUPPORT BRACKET (ZR1768 OR 812026) ON CORNER OF CHIMNEY SHAFT AS SHOWN. NOTE THAT THE LOWER EDGE OF THE SLOT IN THE DOME SUPPORT BRACKET IS EVEN WITH THE TOP SURFACE OF THE CHIMNEY TOP (SEE DETAIL B).

STEP 10. PREDRILL (4) 1 1/32" DIA. HOLES USING THE DOME SUPPORT BRACKET AS A TEMPLATE.


STEP 11. FASTEN DOME SUPPORT BRACKET WITH (4) 5/16-18 X 2 1/4" HEX BOLTS (MH8097), (4) 5/16" X 1 1/2" FLAT WASHERS (MH8032), (4) 5/16-18 NYLON LOCK NUT (MH90044). WASHERS AND NUTS SHOULD BE ON THE INSIDE OF THE CHIMNEY. DO NOT OVER TIGHTEN.

STEP 12. REPEAT STEPS 8 THROUGH 10 FOR OTHER (3) DOME SUPPORT BRACKETS.

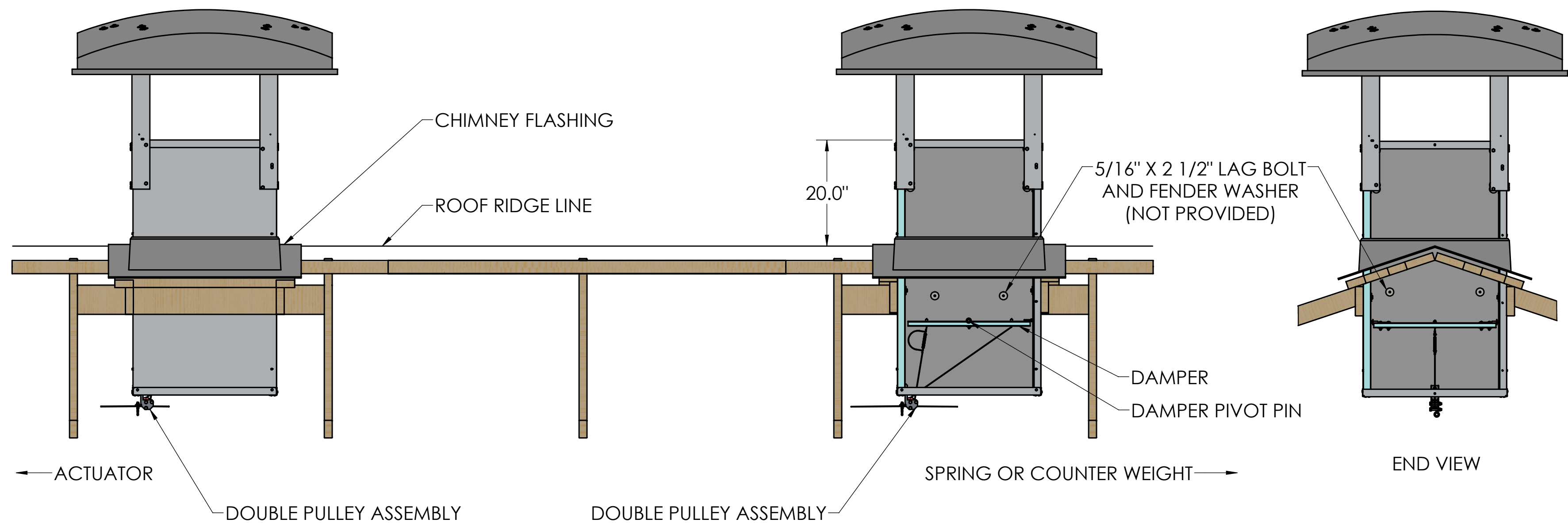
STEP 13. CENTER ROOF CHIMNEY DOME (ZR1710 OR ZR1710A) ON THE (4) DOME SUPPORT BRACKETS.

STEP 14. PREDRILL (16) 1 1/32" DIA. HOLES USING THE DOME SUPPORT BRACKETS AS TEMPLATES.

STEP 15. FASTEN THE DOME TO THE DOME SUPPORT BRACKETS USING (16) 5/16-18 X 1" HEX BOLTS (010431), (16) 5/16" X 1 1/2" FLAT WASHERS (MH8032), AND (16) 5/16-18 NYLON LOCK NUTS (MH90044). NOTE THAT THE FLAT WASHERS ARE ON THE TOP SIDE OF THE DOME.

UNSPECIFIED TOLERANCES 2 PLACE ±.060 3 PLACE ±.030 4 PLACE ±.010 HOLE DIA. ±.010 ANGULAR ± 1°	DIMENSIONS ARE IN INCHES DIMENSIONS IN () ARE MILLIMETERS UNLESS OTHERWISE SPECIFIED. DO NOT SCALE		 VALCO COMPANIES, INC. PO BOX 8 NEW HOLLAND, PA 17557	
	DATE 11/01/17	DESCRIPTION 1		
This drawing and any print thereof is the property of VALCO COMPANIES INC. and is subject to return on request by this company. The information shown is confidential and the recipient by accepting this drawing agrees not to use any information contained thereon in any manner which will be detrimental to VALCO COMPANIES INC.		DRAWN RAE	DESCRIPTION 2	
		CHECK -	DOME	
		WEIGHT -		
		SCALE 1:8	SHEET 4 OF 8	
			990188	
			REV. -	

CHIMNEY INSTALLATION IN ROOF



NOTE: BEFORE YOU BEGIN INSTALLING THE CHIMNEYS INTO THE ROOF, BE AWARE THAT ALL DOUBLE PULLEY ASSEMBLIES LOCATED INSIDE THE BOTTOM OF THE CHIMNEYS MUST BE ORIENTED IN THE SAME DIRECTION TO EACH OTHER WITH THE DAMPER PIVOT PINS LOCATED PERPENDICULAR TO THE ROOF RIDGE LINE. THIS ALLOWS THE DAMPERS TO BE ACTUATED IN A SERIES BY THE HOMERUN LINE.

ASSEMBLY SEQUENCE

STEP 1. SLIDE THE CHIMNEY FLASHING ONTO THE CHIMNEY FROM THE BOTTOM END BEFORE INSTALLING THE CHIMNEY INTO THE ROUGH OPENING.

STEP 2. INSTALL THE CHIMNEY INTO THE ROUGH OPENING WITH 20" OF CHIMNEY PROTRUDING ABOVE THE PEAK OF THE ROOF AS SHOWN ABOVE.

STEP 3. BOLT THE CHIMNEY INTO THE ROUGH OPENING WITH (2) LAG BOLTS AND FENDER WASHERS IN EACH SIDE OF THE CHIMNEY (HARDWARE NOT INCLUDED). SHIM AS NEEDED TO KEEP THE CHIMNEY SQUARE IN THE ROUGH OPENING AND THE DAMPER OPERATING FREELY. DO NOT OVER TIGHTEN THE LAG BOLTS.

STEP 4. SEE QUICK SHEET # 990186 FOR FLASHING PREPARATION AND ADDITIONAL INSTALLATION INSTRUCTIONS. THE FLASHING WILL SIT DIRECTLY ON THE ROOF PEAK.

STEP 5. SEE QUICK SHEET #990187 IF YOU ARE PLANNING TO INSTALL BIRD NETTING ON CHIMNEY.

990188

SHEET 5

REV.

NOTE: BEFORE YOU BEGIN INSTALLING THE CHIMNEYS INTO THE ROOF, BE AWARE THAT ALL DOUBLE PULLEY ASSEMBLIES LOCATED INSIDE THE BOTTOM OF THE CHIMNEYS MUST BE ORIENTED IN THE SAME DIRECTION TO EACH OTHER WITH THE DAMPER PIVOT PINS LOCATED PERPENDICULAR TO THE ROOF RIDGE LINE. THIS ALLOWS THE DAMPERS TO BE ACTUATED IN A SERIES BY THE HOMERUN LINE.

ASSEMBLY SEQUENCE

STEP 1. SLIDE THE CHIMNEY FLASHING ONTO THE CHIMNEY FROM THE BOTTOM END BEFORE INSTALLING THE CHIMNEY INTO THE ROUGH OPENING.

STEP 2. INSTALL THE CHIMNEY INTO THE ROUGH OPENING WITH 20" OF CHIMNEY PROTRUDING ABOVE THE PEAK OF THE ROOF AS SHOWN ABOVE.

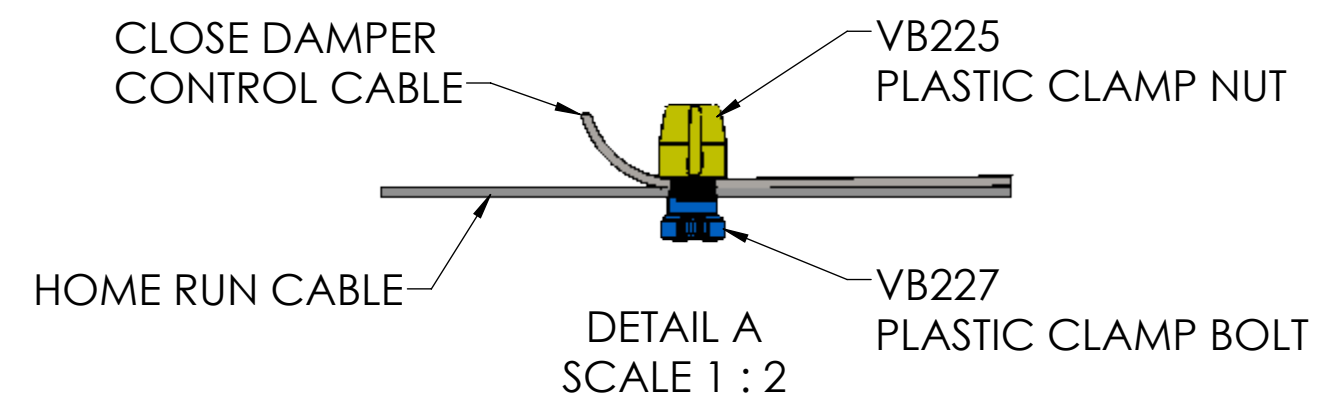
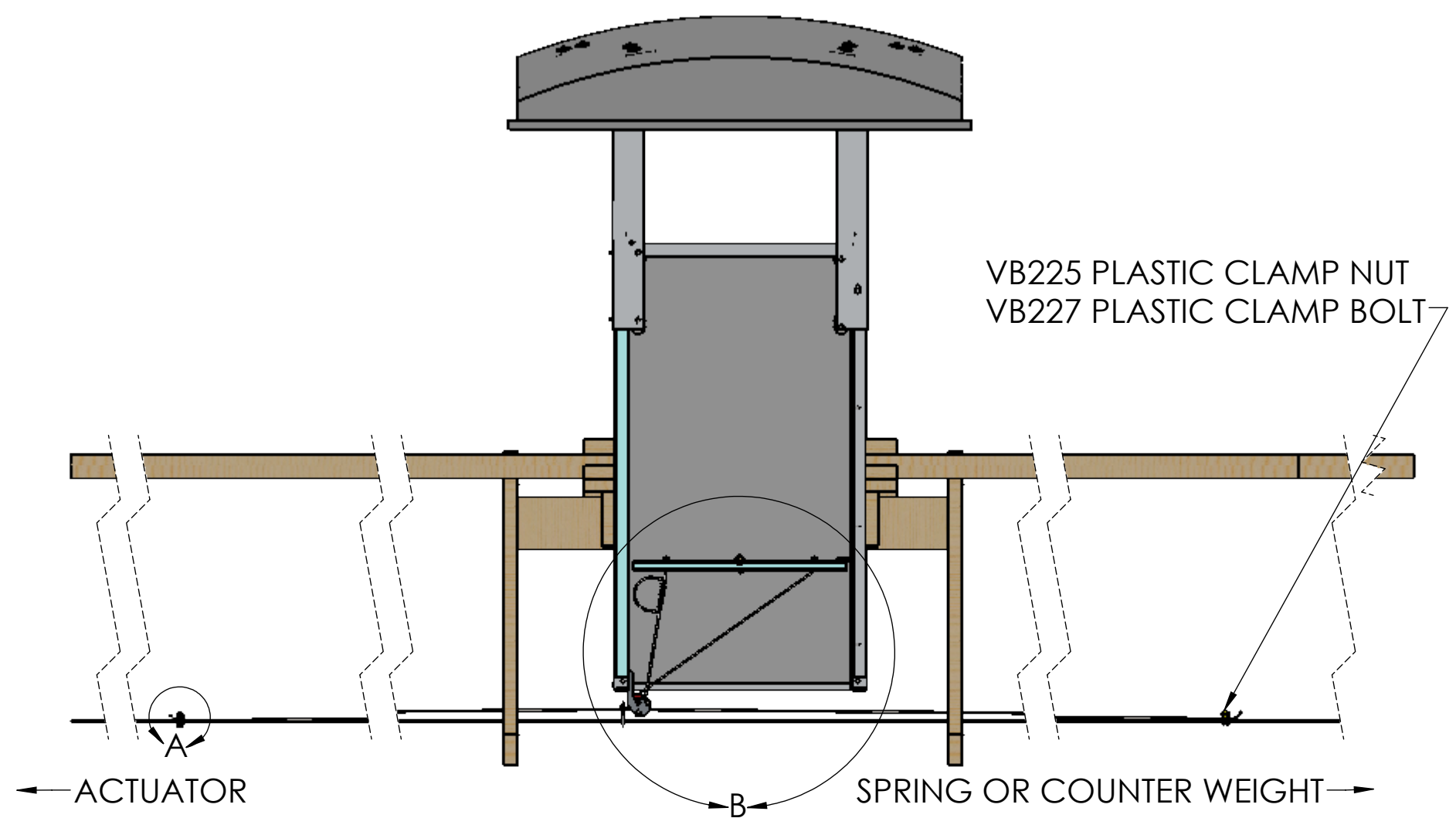
STEP 3. BOLT THE CHIMNEY INTO THE ROUGH OPENING WITH (2) LAG BOLTS AND FENDER WASHERS IN EACH SIDE OF THE CHIMNEY (HARDWARE NOT INCLUDED). SHIM AS NEEDED TO KEEP THE CHIMNEY SQUARE IN THE ROUGH OPENING AND THE DAMPER OPERATING FREELY. DO NOT OVER TIGHTEN THE LAG BOLTS.

STEP 4. SEE QUICK SHEET # 990186 FOR FLASHING PREPARATION AND ADDITIONAL INSTALLATION INSTRUCTIONS. THE FLASHING WILL SIT DIRECTLY ON THE ROOF PEAK.

STEP 5. SEE QUICK SHEET #990187 IF YOU ARE PLANNING TO INSTALL BIRD NETTING ON CHIMNEY.

UNSPECIFIED TOLERANCES 2 PLACE ± .060 3 PLACE ± .030 4 PLACE ± .010 HOLE DIA. ± .010 ANGULAR ± 1°	DIMENSINS ARE IN INCHES DIMENSIONS IN () ARE MILLIMETERS UNLESS OTHERWISE SPECIFIED. DO NOT SCALE	DATE 11/01/17	DESCRIPTION 1 QUICKSHEET CHIMNEY SHAFT AND DOME	VALCO COMPANIES, INC. PO BOX 8 NEW HOLLAND, PA 17557
This drawing and any print thereof is the property of VALCO COMPANIES INC. and is subject to return on request by this company. The information shown is confidential and the recipient by accepting this drawing agrees not to use any information contained thereon in any manner which will be detrimental to VALCO COMPANIES INC.	DRAWN RAE	CHECK -	WEIGHT	SCALE 1:16
SHEET 5 OF 8			990188	REV. -

HOME RUN CABLE LINKAGE (OPTION 1)



USE ONE EACH OF VB225 & VB227 TO FASTEN THE OPEN & CLOSE DAMPER CONTROL CABLES TO THE HOME RUN CABLE.

ASSEMBLY SEQUENCE

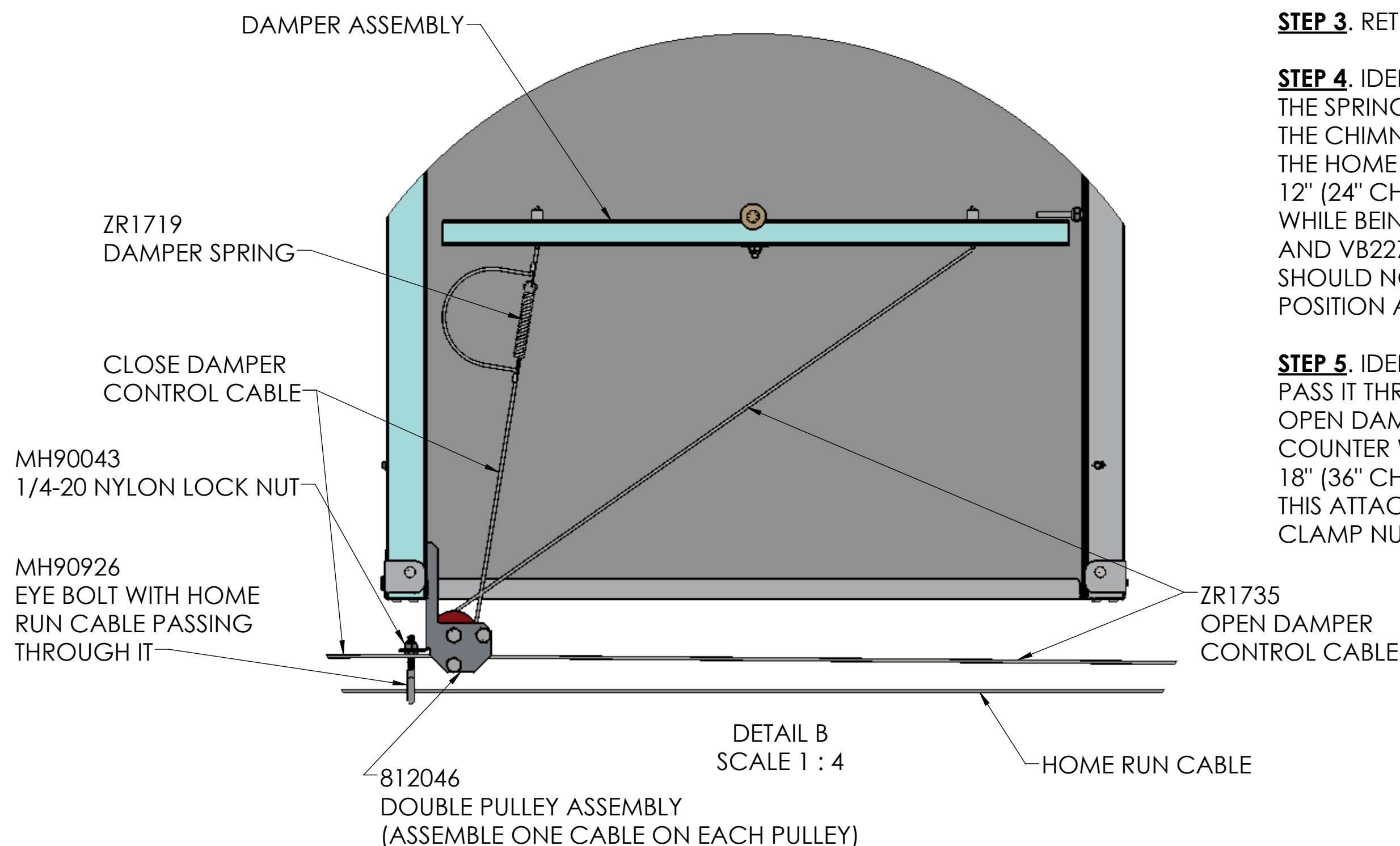
STEP 1. INSTALL THE HOME RUN CABLE THROUGH THE EYE BOLT MOUNTED ON THE PULLEY ASSEMBLIES WHICH WERE INSTALLED ON THE CHIMNEY. ATTACH ONE END TO THE ACTUATOR AND THE OTHER END TO THE COUNTER WEIGHT.

STEP 2. ADJUST THE LIMIT SWITCHES ON THE ACTUATOR OR CURTAIN MACHINE FOR A MAXIMUM TRAVEL OF 11" FOR A 24" CHIMNEY OR 17" FOR A 36" CHIMNEY. NOTE: HOMERUN LINE SHOULD HAVE TENSION IN IT THROUGH THE FULL TRAVEL.

STEP 3. RETRACT ACTUATOR OR CURTAIN MACHINE TO LIMIT SWITCH.


STEP 4. IDENTIFY THE CLOSE DAMPER CONTROL CABLE (WITH THE SPRING) AND PASS IT THROUGH ONE OF THE PULLEYS ON THE CHIMNEY. ATTACH THE CLOSE DAMPER CONTROL CABLE TO THE HOME RUN CABLE TOWARD THE ACTUATOR A MINIMUM OF 12" (24" CHIMNEY) OR 18" (36" CHIMNEY) FROM THE PULLEY WHILE BEING HELD TIGHT. THIS ATTACHMENT IS MADE WITH A VB225 AND VB227 PLASTIC CLAMP NUT AND BOLT. NOTE: ZR1719 SPRING SHOULD NOT BE EXTENDED AND THE DAMPER SHOULD BE IN CLOSED POSITION AT THIS TIME.

STEP 5. IDENTIFY THE OPEN DAMPER CONTROL CABLE AND PASS IT THROUGH THE OTHER PULLEY ON THE CHIMNEY. ATTACH THE OPEN DAMPER CONTROL CABLE TO THE HOME RUN CABLE IN THE COUNTER WEIGHT DIRECTION A MINIMUM OF 12" (24" CHIMNEY) OR 18" (36" CHIMNEY) FROM THE PULLEY WHILE BEING HELD TIGHT. THIS ATTACHMENT IS MADE WITH A VB225 AND VB227 PLASTIC CLAMP NUT AND BOLT.

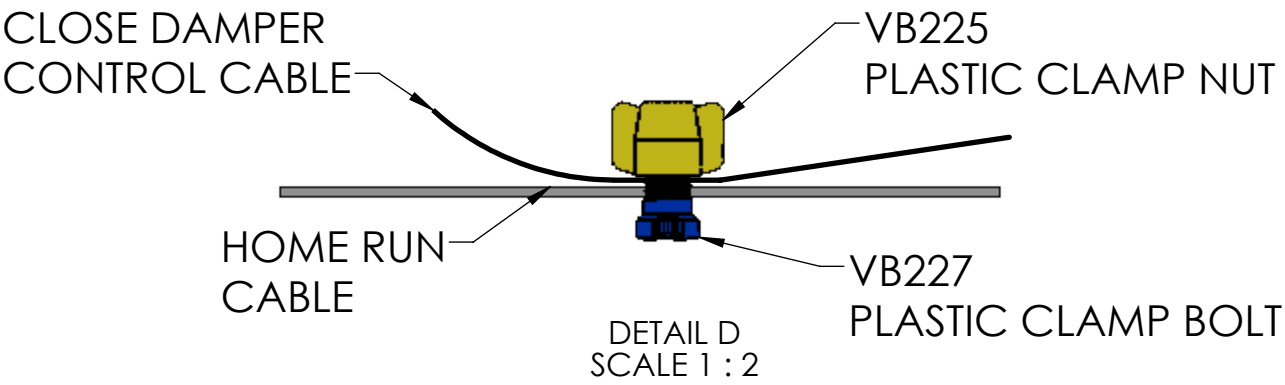


990188

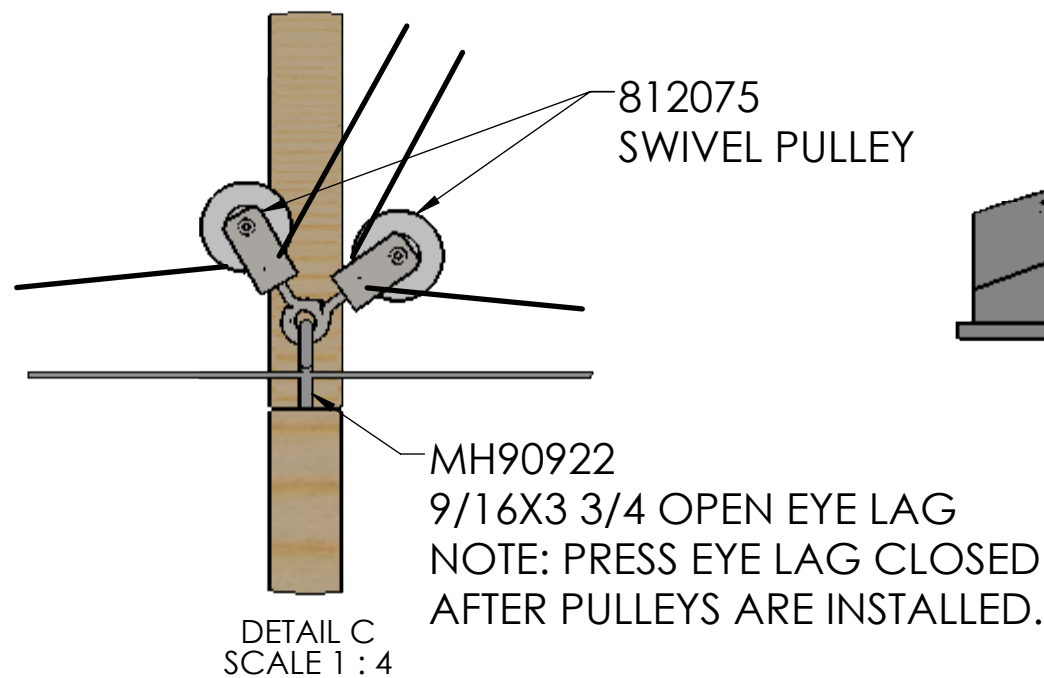
SHEET 6 REV. -

UNSPECIFIED TOLERANCES 2 PLACE ±.060 3 PLACE ±.030 4 PLACE ±.010 HOLE DIA. ±.010 ANGULAR ±1°	DIMENSINS ARE IN INCHES DIMENSIONS IN () ARE MILLIMETERS UNLESS OTHERWISE SPECIFIED. DO NOT SCALE		 VALCO COMPANIES, INC. PO BOX 8 NEW HOLLAND, PA 17557		
	DATE 11/01/17	DESCRIPTION 1 QUICKSHEET CHIMNEY SHAFT AND			
	DRAWN RAE	DESCRIPTION 2 DOME			
	CHECK -				
This drawing and any print thereof is the property of VALCO COMPANIES INC. and is subject to return on request by this company. The information shown is confidential and the recipient by accepting this drawing agrees not to use any information contained thereon in any manner which will be detrimental to VALCO COMPANIES INC.		WEIGHT			
		SCALE 1:16	SHEET 6 OF 8	990188	REV. -

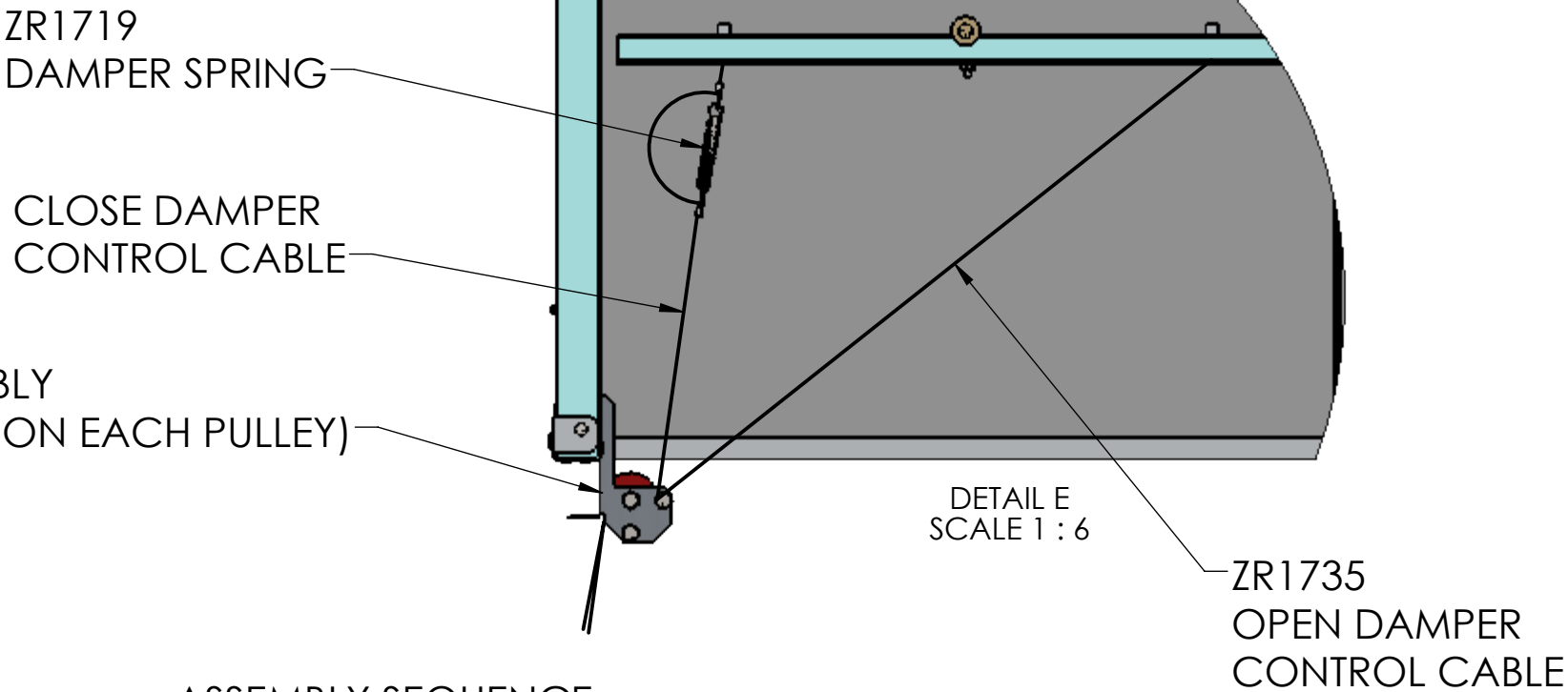
HOME RUN CABLE LINKAGE (OPTION 2)



USE ONE EACH OF VB225 & VB227 TO FASTEN THE OPEN & CLOSE DAMPER CONTROL CABLES TO THE HOME RUN CABLE AS SHOWN.



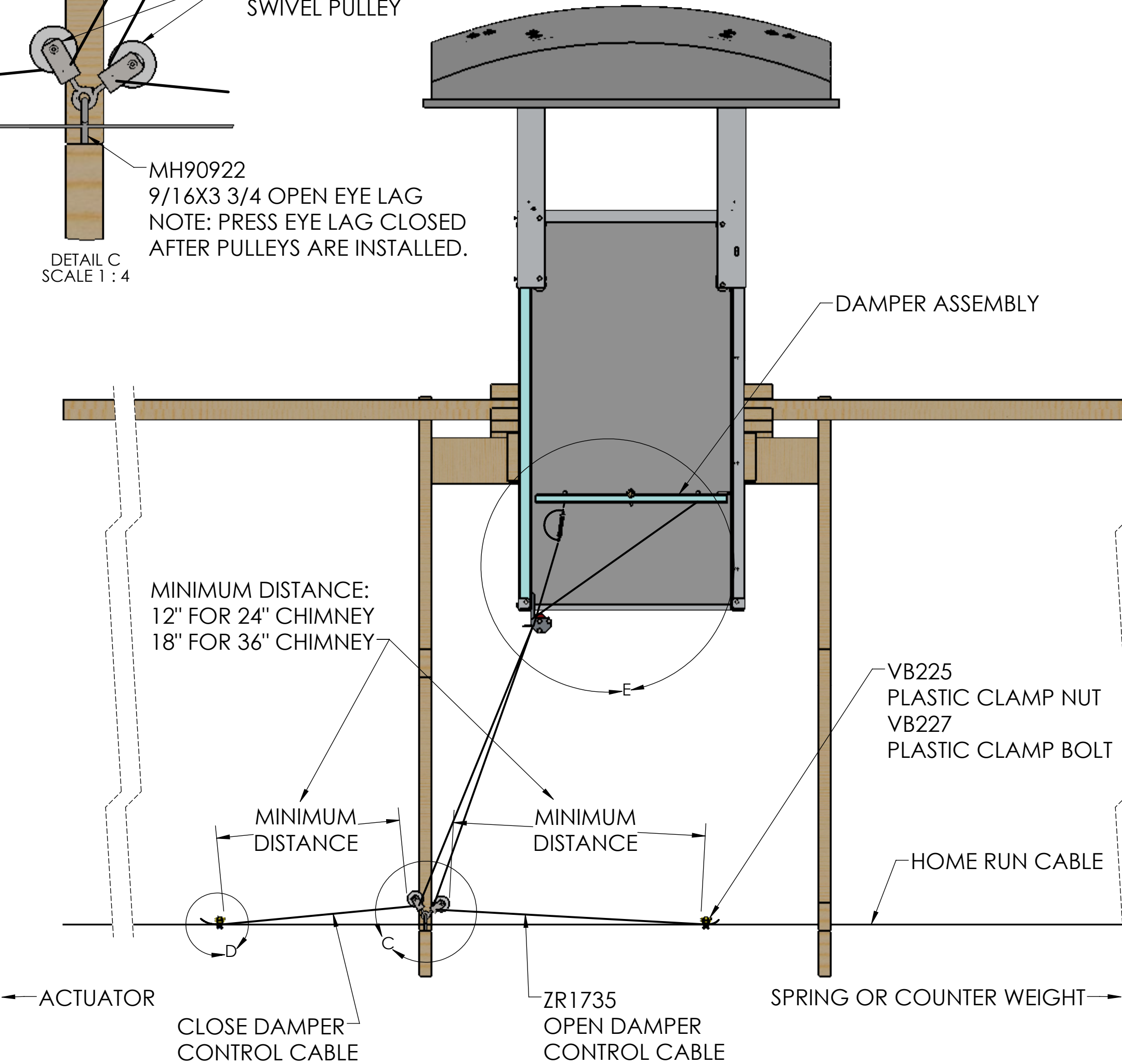
812046
DOUBLE PULLEY ASSEMBLY
(ASSEMBLE ONE CABLE ON EACH PULLEY)




ASSEMBLY SEQUENCE

- STEP 1.** INSTALL THE OPEN EYE LAG INTO THE TOP OF THE BOTTOM CORD DIRECTLY IN LINE WITH THE DOUBLE PULLEY (812046). SEE DETAIL C
- STEP 2.** ATTACH (2) SWIVEL PULLEYS TO THE OPEN EYE LAG AND SQUEEZE THE OPEN EYE LAG CLOSED SO THE PULLEYS ARE SECURED.
- STEP 3.** INSTALL THE HOME RUN CABLE OVER THE ROOF TRUSS BOTTOM CORD AND NEAR THE SWIVEL PULLEYS. ATTACH ONE END TO THE ACTUATOR AND THE OTHER END TO THE COUNTERWEIGHT.
- STEP 4.** ADJUST THE LIMIT SWITCHES ON THE ACTUATOR OR CURTAIN MACHINE FOR A MAXIMUM TRAVEL OF 11" FOR A 24" CHIMNEY OR 17" FOR A 36" CHIMNEY. NOTE: THE HOMERUN LINE SHOULD HAVE TENSION IN IT THROUGH THE FULL TRAVEL.
- STEP 5.** RETRACT ACTUATOR OR CURTAIN MACHINE TO LIMIT SWITCH.
- STEP 6.** IDENTIFY THE CLOSE DAMPER CONTROL CABLE (WITH THE SPRING) AND PASS IT THROUGH ONE OF THE PULLEYS ON THE CHIMNEY AND ONE OF THE SWIVEL PULLEYS ON THE BOTTOM CORD. ATTACH THE CLOSE DAMPER CONTROL CABLE TO THE HOME RUN CABLE IN THE ACTUATOR DIRECTION A MINIMUM OF 12" (24" CHIMNEY) OR 18" (36" CHIMNEY) FROM THE SWIVEL PULLEY WHILE BEING HELD TIGHT. THIS ATTACHMENT IS MADE WITH A VB225 AND VB227 PLASTIC CLAMP NUT AND BOLT. NOTE: ZR1719 SPRING SHOULD NOT BE EXTENDED AND THE DAMPER SHOULD BE IN THE CLOSED POSITION AT THIS TIME.
- STEP 7.** IDENTIFY THE OPEN DAMPER CONTROL CABLE AND PASS IT THROUGH THE OTHER PULLEY ON THE CHIMNEY AND THE OTHER SWIVEL PULLEY ON THE BOTTOM CORD. ATTACH THE OPEN DAMPER CONTROL CABLE TO THE HOME RUN CABLE IN THE COUNTERWEIGHT DIRECTION A MINIMUM OF 12" (24" CHIMNEY) OR 18" (36" CHIMNEY) FROM THE SWIVEL PULLEY WHILE BEING HELD TIGHT. THIS ATTACHMENT IS MADE WITH A VB225 AND VB227 PLASTIC CLAMP NUT AND BOLT.

990188
SHEET 7 REV. -

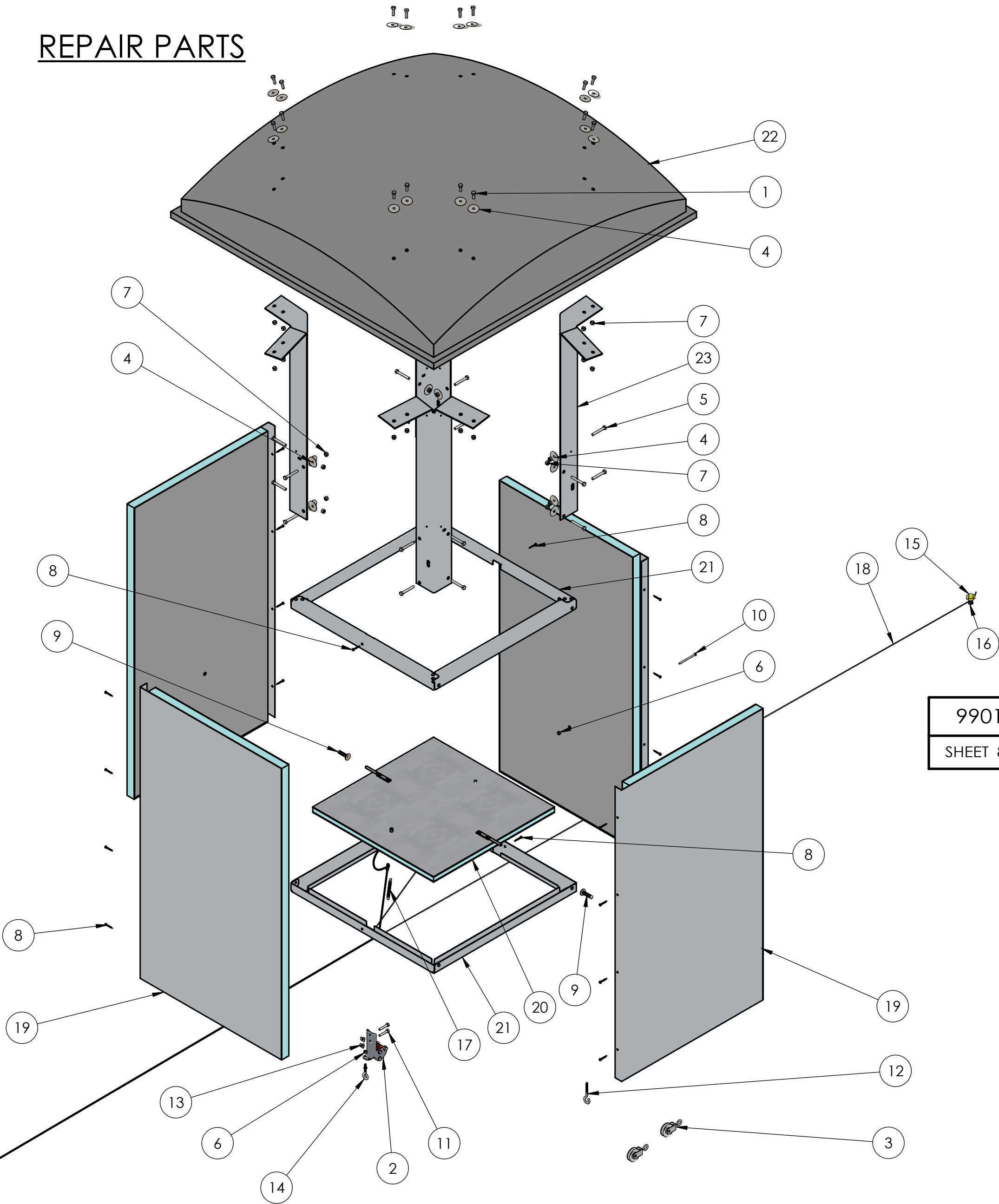


UNSPECIFIED TOLERANCES 2 PLACE ±.060 3 PLACE ±.030 4 PLACE ±.010 HOLE DIA. ±.010 ANGULAR ±1°		DIMENSINS ARE IN INCHES DIMENSIONS IN () ARE MILLIMETERS UNLESS OTHERWISE SPECIFIED. DO NOT SCALE		 VALCO COMPANIES, INC. PO BOX 8 NEW HOLLAND, PA 17557	
DATE 11/01/17		DRAWN RAE		DESCRIPTION 1 QUICKSHEET CHIMNEY SHAFT AND	
CHECK		WEIGHT		DESCRIPTION 2 DOME	
SCALE 1:16		SHEET 7 OF 8		990188	
This drawing and any print thereof is the property of VALCO COMPANIES INC. and is subject to return on request by this company. The information shown is confidential and the recipient by accepting this drawing agrees not to use any information contained thereon in any manner which will be detrimental to VALCO COMPANIES INC.				REV. -	


BILL OF MATERIALS				
ITEM #	812210 - 24" PART #	812310 - 36" PART #	QTY	DESCRIPTION
1	010431	010431	16	SCREW, 5/16-18 X 1 HHCS SS
2	812046	812046	1	DBL PULLEY ASSY, CHIMNEY, SS
3	812075	812075	2	PULLEY, SWIVEL, 1-7/8 NYLON SS
4	MH8032	MH8032	32	WASHR,FLAT,5/16"IDX1 1/2"OD SS
5	MH8097	MH8097	16	BOLT,5/16-18X2.25,STD HD.,S/S
6	MH90043	MH90043	2	NUT,HEXNYLOCK,1/4-20,SS
7	MH90044	MH90044	32	NUT, HEX LOCK 5/16-18 SS NYLOC
8	MH90256	MH90256	19	SCR TEK HEX 8-18 X 1.25 SS
9	MH90411	MH90411	2	HINGE,BUSHING,CHIM DAMPER PLASTIC
10	MH90914	MH90914	1	BLT,PANHD,1/4-20X3,SLTD,SS
11	MH90918	MH90918	2	BLT,HX,1/4-20X1 1/2,SS STAINLESS STL
12	MH90922	MH90922	1	LAG, OPEN EYE, 1/4 X 3-1/2, SS
13	MH90923	MH90923	2	WELDNUT,1/4-20,SLAB BASE SS STAINLESS STL
14	MH90926	MH90926	1	EYE BOLT 1/4-20X 1-1/2 1/2 ID
15	VB225	VB225	2	CLAMP NUT- LARGE - 1/2"
16	VB227	VB227	2	CLAMP BOLT- LARGE 1/2" - W/ SHORT SLOT
17	ZR1719	ZR1719	1	SPRING, DAMPER CHIMNEY #LE-045D-11 STAINLESS STEEL
18	ZR1735	ZR1735	1	7X7 SSAC 3/32" CABLE 12' LONG
19	812036	812065	4	PANEL, SWINE CHIMNEY
20	812021	ZR1717A	1	DAMPER, CHIMNEY KIT
21	SMP8016	SMP8019	2	CHIMNEY TOP&BOTTOM ASSY
22	ZR1710	ZR1710A	1	ROOF CHIMNEY DOME
23	ZR1768	812026	4	BRACKET, DOME SUPPORT

NOTE: 24" CHIMNEY SHOWN IN EXPLODED VIEW

REPAIR PARTS

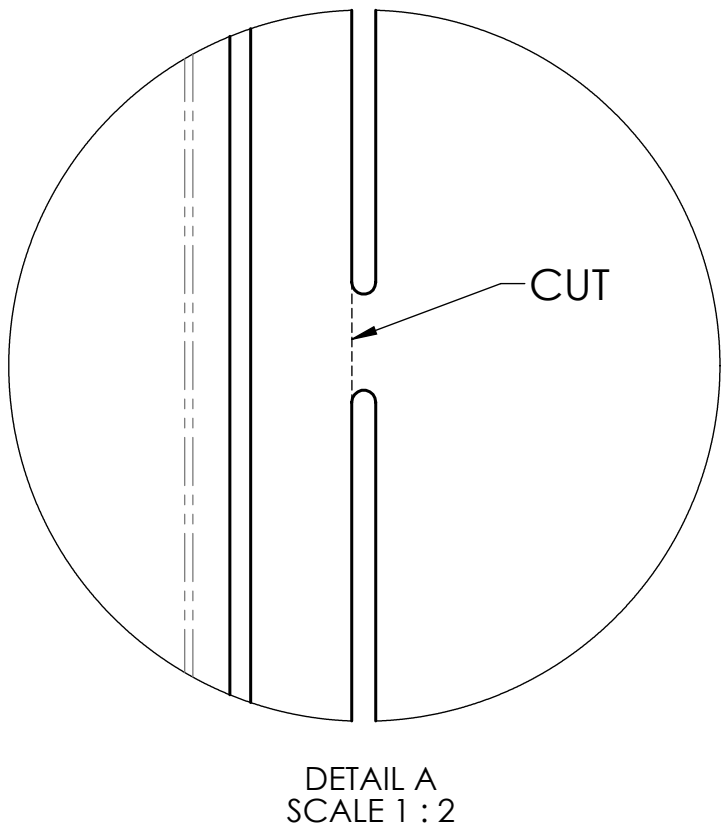
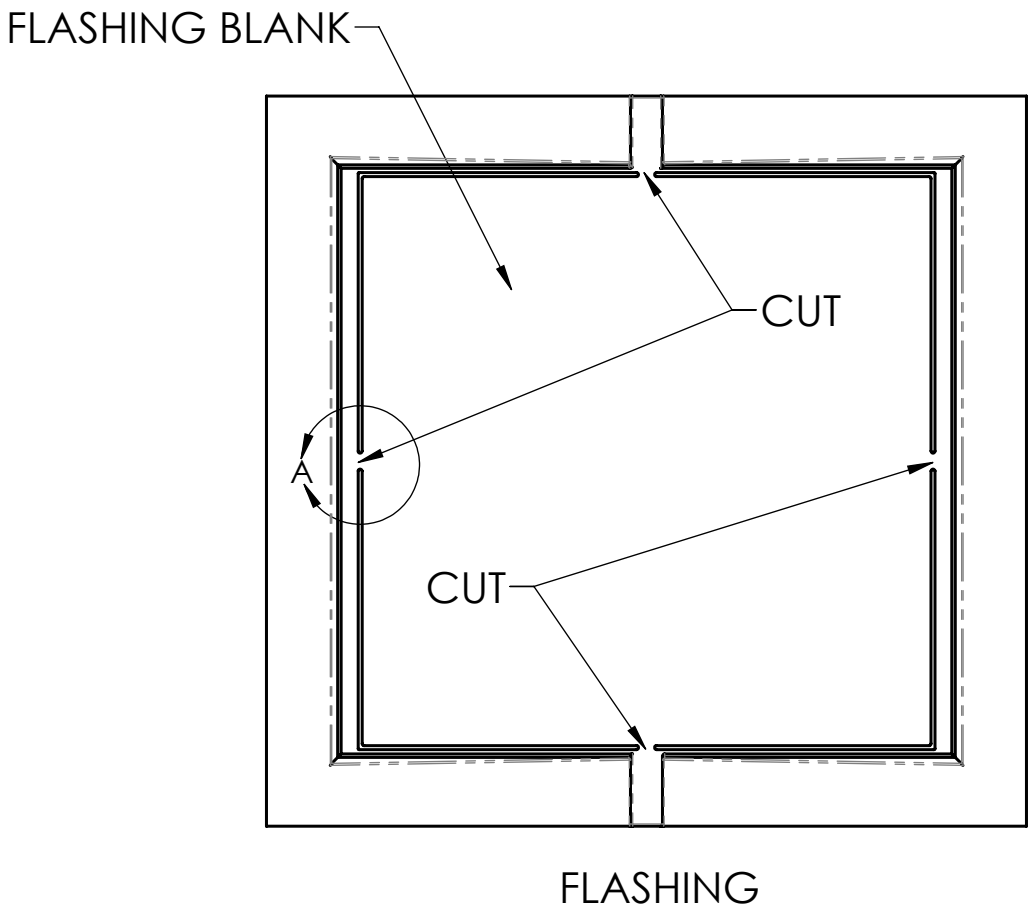
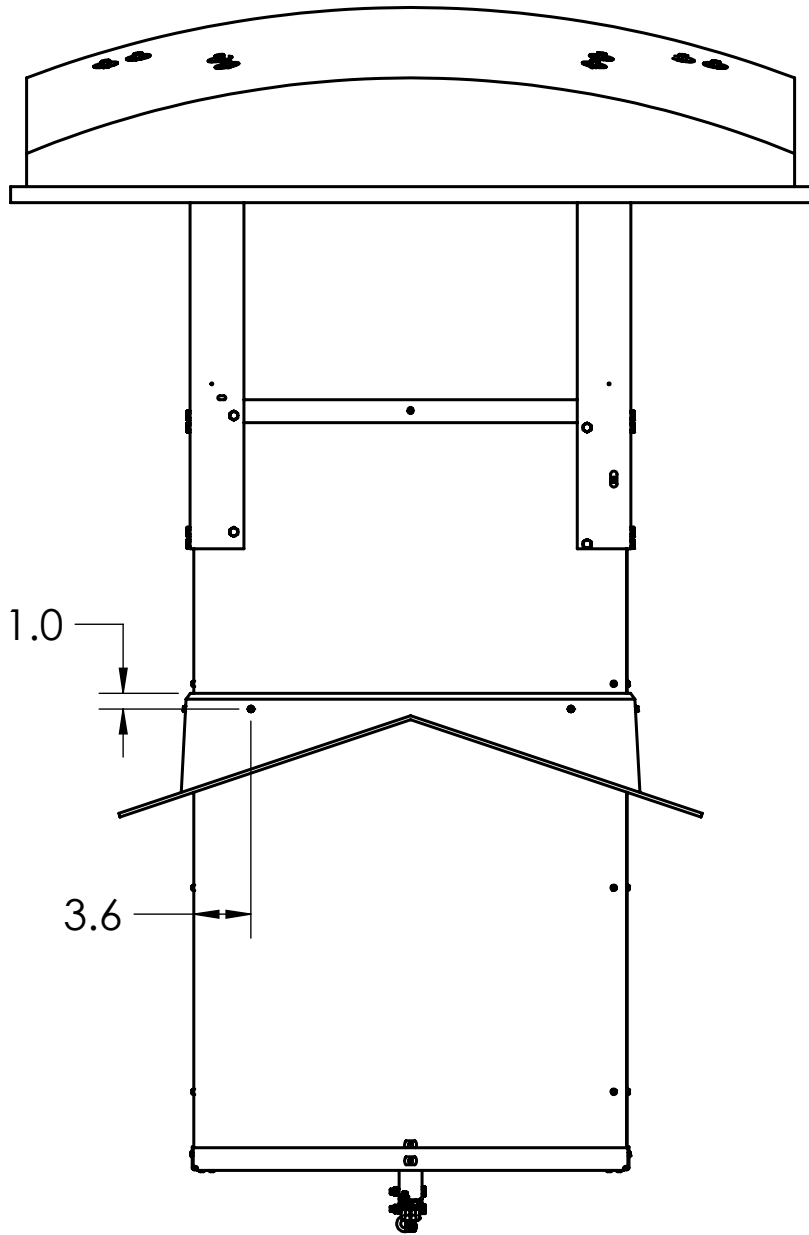
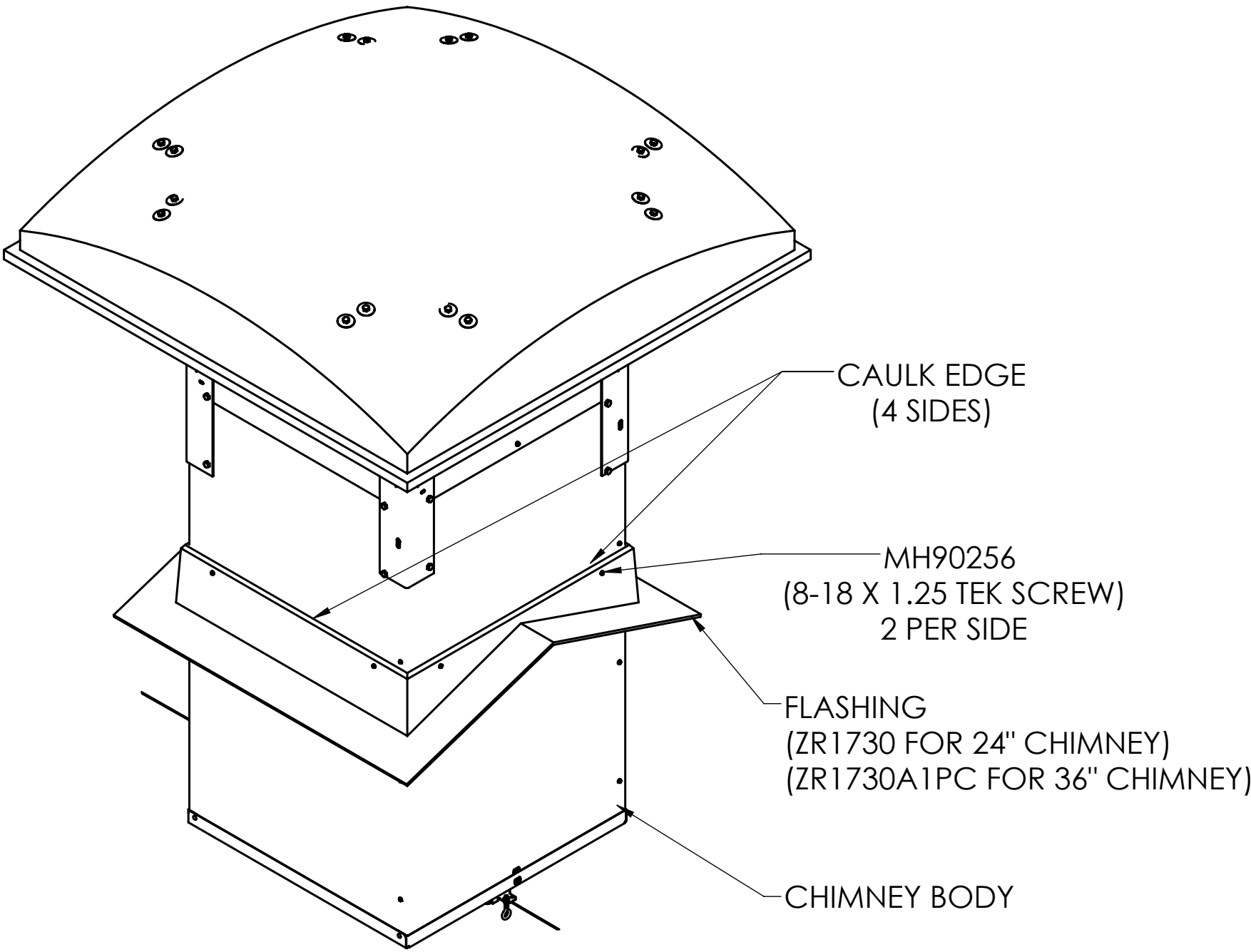


990188	
SHEET 8	REV. -

UNSPECIFIED TOLERANCES 2 PLACE ± .060 3 PLACE ± .030 4 PLACE ± .010 HOLE DIA. ± .010 ANGULAR ± 1°	DIMENSIONS ARE IN INCHES DIMENSIONS IN () ARE MILLIMETERS UNLESS OTHERWISE SPECIFIED. DO NOT SCALE		 VALCO COMPANIES, INC. PO BOX 8 NEW HOLLAND, PA 17557
	DATE 11/01/17	DESCRIPTION 1	
	DRAWN RAE	QUICKSHEET CHIMNEY SHAFT AND	
	CHECK	DESCRIPTION 2	
		DOME	
This drawing and any print thereof is the property of VALCO COMPANIES INC. and is subject to return on request by this company. The information shown is confidential and the recipient by accepting this drawing agrees not to use any information contained thereon in any manner which will be detrimental to VALCO COMPANIES INC.	WEIGHT	SHEET 8 OF 8	
	SCALE 1:12		
		990188	REV. -

BILL OF MATERIALS				
ITEM #	812230 - 24" FLASHING KIT	812330 - 36" FLASHING KIT	QTY	DESCRIPTION
1	MH90256	MH90256	8	SCR TEK HEX 8-18 X 1.25 SS
2	ZR1730	ZR1730A1PC	1	ROOF CHIMNEY FLASHING

QUICK SHEET FOR INSTALLING CHIMNEY FLASHING ON 24" OR 36" CHIMNEYS




ASSEMBLY SEQUENCE

- STEP 1.** REMOVE BLANK FROM FLASHING BY CUTTING ALONG OUTSIDE EDGES OF EXISTING SLOTS.
- STEP 2.** SLIDE FLASHING ONTO CHIMNEY PRIOR TO INSTALLING CHIMNEY IN THE ROUGH OPENING.
- STEP 3.** INSTALL CHIMNEY IN THE ROUGH OPENING PER INSTRUCTIONS 990188.
- STEP 4.** REST FLASHING AGAINST THE ROOF.
- STEP 5.** FASTEN FLASHING TO CHIMNEY BODY WITH (8) TEK SCREWS (2 PER SIDE) LOCATED APPROXIMATELY AS SHOWN.
- STEP 6.** CAULK ALONG THE TOP EDGE OF FLASHING ON ALL SIDES.
- STEP 7.** SECURE FLASHING TO ROOF AND CAULK AS NEEDED. (HARDWARE NOT INCLUDED)

990186

SHEET 1

REV.
-

UNSPECIFIED TOLERANCES 2 PLACE ± .060 3 PLACE ± .030 4 PLACE ± .010 HOLE DIA. ± .010 ANGULAR ± 1°	DIMENSINS ARE IN INCHES DIMENSIONS IN () ARE MILLIMETERS UNLESS OTHERWISE SPECIFIED. DO NOT SCALE	 VALCO COMPANIES, INC. PO BOX 8 NEW HOLLAND, PA 17557
This drawing and any print thereof is the property of VALCO COMPANIES INC. and is subject to return on request by this company. The information shown is confidential and the recipient by accepting this drawing agrees not to use any information contained thereon in any manner which will be detrimental to VALCO COMPANIES INC.	DATE 10/11/17 DRAWN RAE CHECK - WEIGHT - SCALE 1:12	DESCRIPTION 1 QUICKSHEET, CHIMNEY FLASHING DESCRIPTION 2
SHEET 1 OF 1		990186
		REV. -

BILL OF MATERIALS						
ITEM #	812220 - 24" BIRD NETTING KIT	812222 - 24" BIRD NETTING KIT W/ SS WIRE	812320 - 36" BIRD NETTING KIT	812322 - 36" SS BIRD NETTING KIT	DESCRIPTION	QTY.
1	812074	812115	812084	812128	BIRD WIRE	1
2	MH8028	MH8028	MH8028	MH8028	WASHER,FLAT,3/16"IDX1"OD,SS	24
3	MH90251	MH90251	MH90251	MH90251	SCR,TEK,#8-18X1/2,TEK,SS	28
4	812135	812135	812136	812136	EYEROD, NETTING SS F/ CHIMNEY	4

REV	ECN#	DESCRIPTION	DATE	BY
A	14811	ADDED 812222.	4/16/2020	SAL
B	15536	ADDED EYERODS WITH ASSOCIATED STEPS, ADDED 812322.	9/21/2021	JDS

QUICKSHEET FOR INSTALLING BIRD NETTING ON EITHER 24" OR 36" CHIMNEYS


STEP 5 (OPTIONAL). USE (2) SCREWS AND WASHERS TO FASTEN NETTING TO DOME ON EACH SIDE (8 TOTAL).

STEP 1. WRAP BIRD NETTING AROUND OUTSIDE OF VERTICAL DOME SUPPORTS. LOCATE AS SHOWN.

STEP 4. WEAVE EYE ROD INTO TOP NETTING TO CLOSE UP ANY GAPS , LOCATE AS SHOWN. ATTACH USING SCREWS AND WASHERS, 1 PER SIDE (4 TOTAL).

STEP 2. PLACE (2) SCREWS AND WASHERS ON EACH SIDE OF THE VERTICAL DOME SUPPORTS USING EXISTING HOLES (8 TOTAL).

STEP 3. PLACE (1) SCREW AND WASHER CENTERED ON METAL FRAME AT BOTTOM OF WIRE (4 TOTAL).

UNSPECIFIED TOLERANCES 2 PLACE ± .060 3 PLACE ± .030 4 PLACE ± .010 HOLE DIA. ± .010 ANGULAR ± 1°		DIMENSINS ARE IN INCHES DIMENSIONS IN () ARE MILLIMETERS UNLESS OTHERWISE SPECIFIED. DO NOT SCALE		 VALCO INDUSTRIES, INC. PO BOX 8 NEW HOLLAND, PA 17557	
DATE 10/25/17		DRAWN SAL		DESCRIPTION 1 QUICKSHEET, CHIMNEY BIRD	
CHECK -		WEIGHT -		DESCRIPTION 2 NETTING	
SCALE 1:4		SHEET 1 OF 1		990187	REV. B