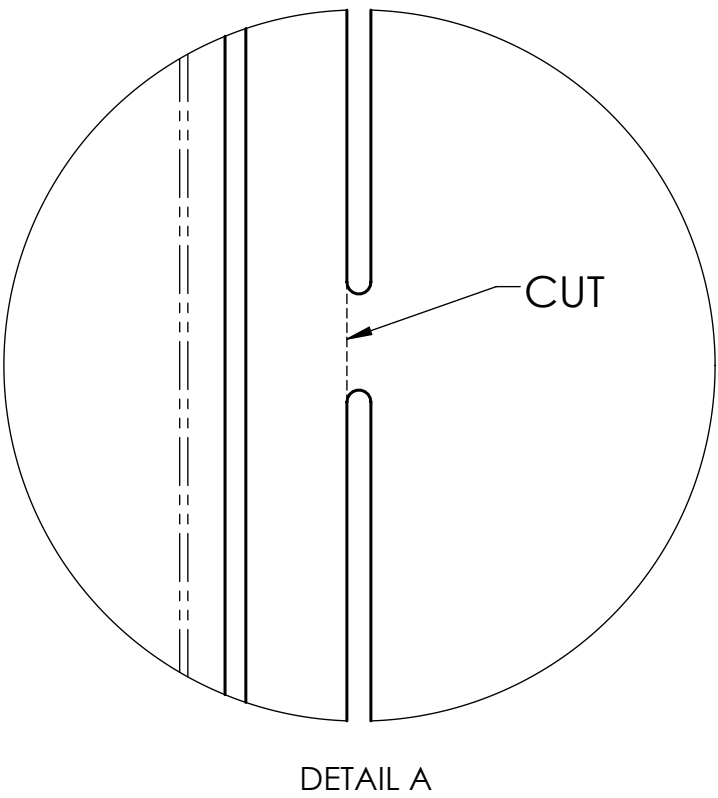
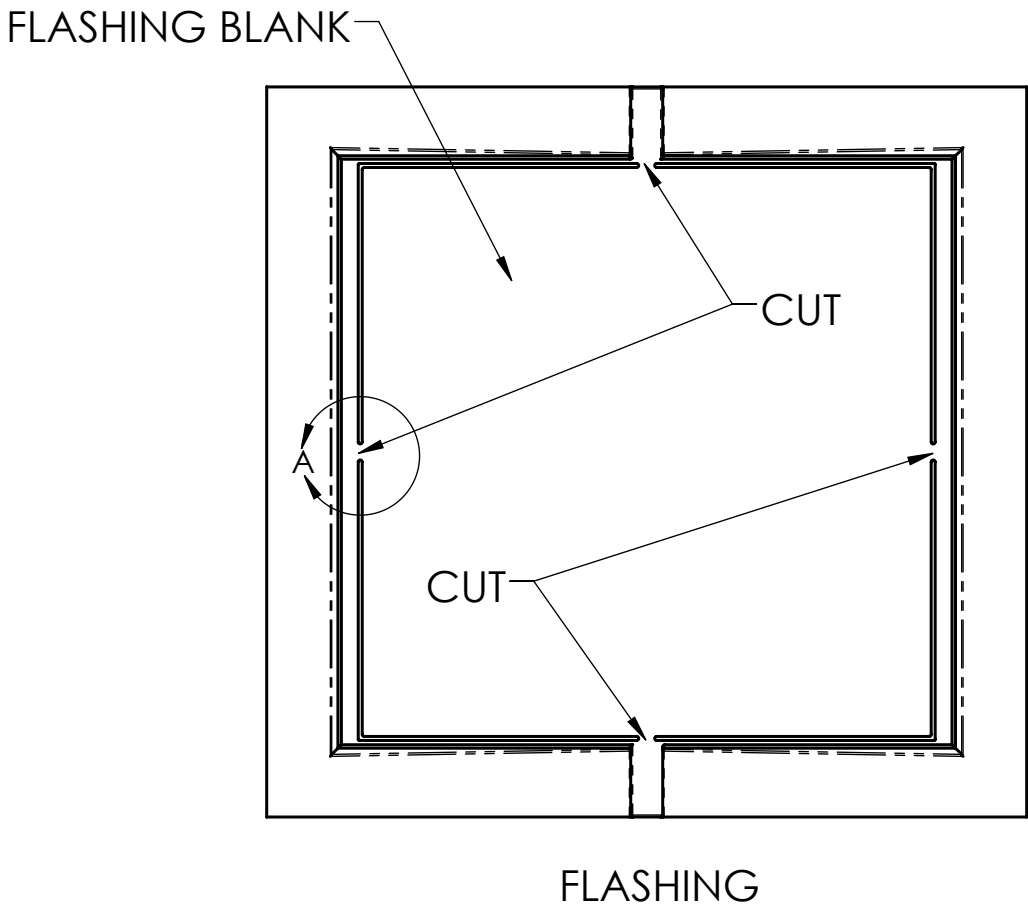
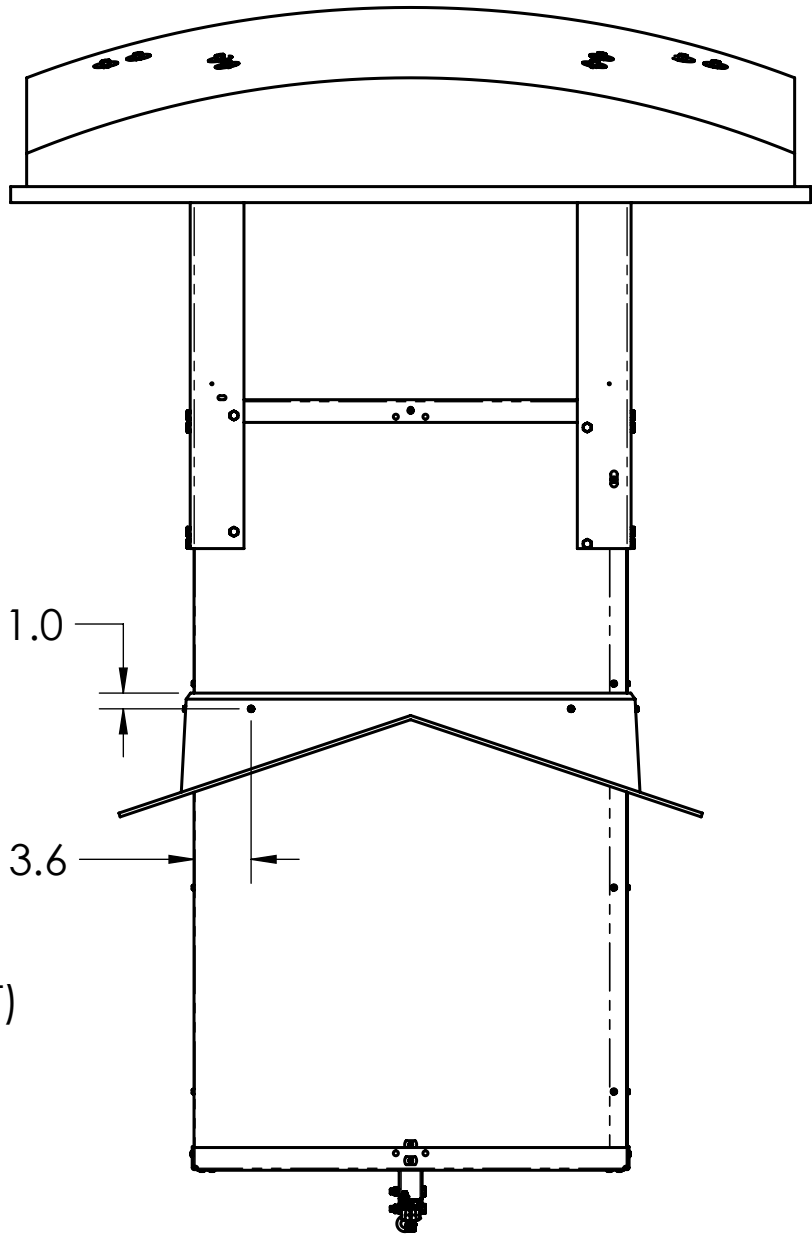
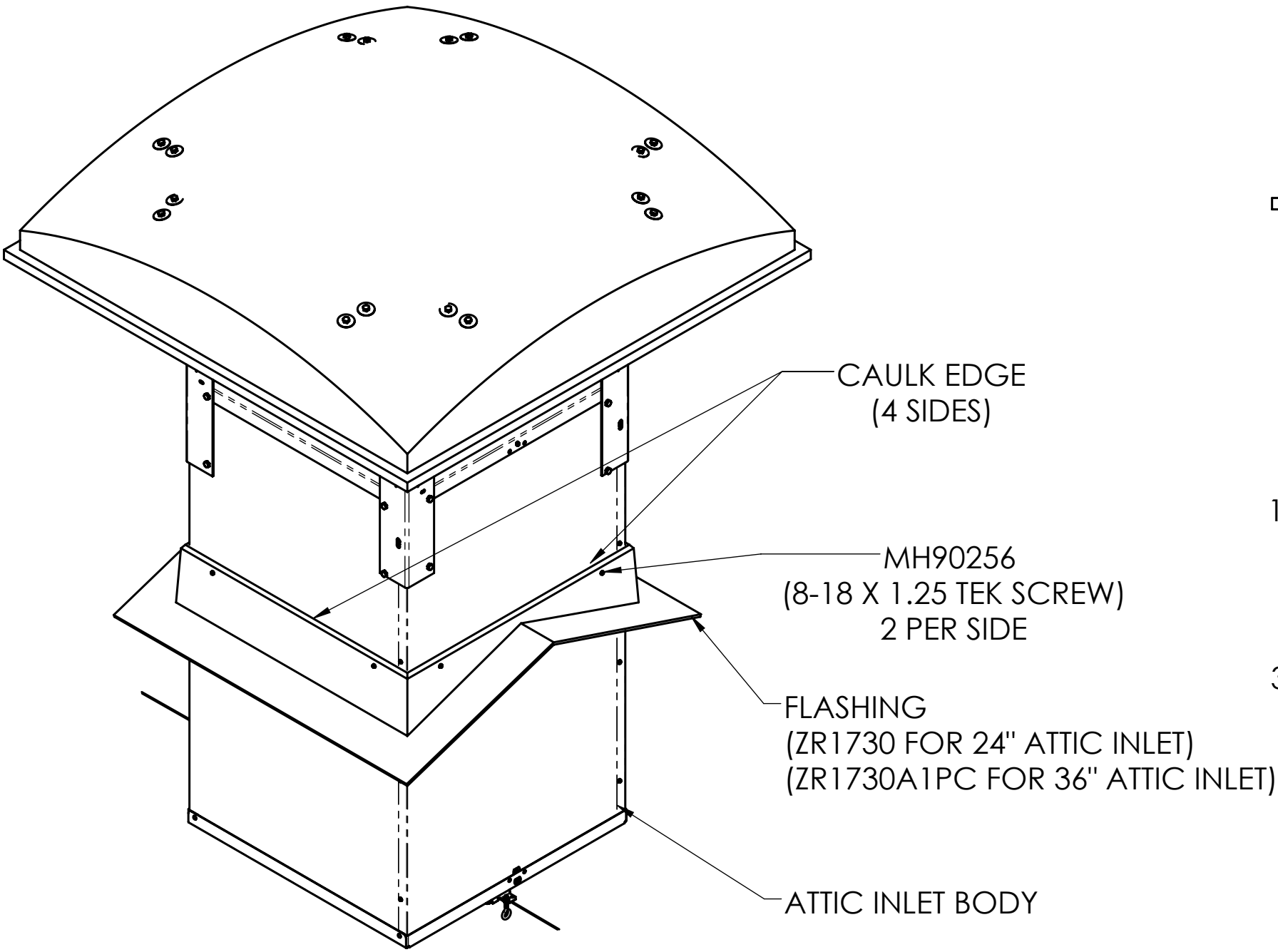



BILL OF MATERIALS				
ITEM #	812230 - 24" FLASHING KIT	812330 - 36" FLASHING KIT	QTY	DESCRIPTION
1	MH90256	MH90256	8	SCR TEK HEX 8-18 X 1.25 SS
2	ZR1730	ZR1730A1PC	1	ROOF ATTIC INLET FLASHING

ATTIC INLET FLASHING INSTALLATION



ASSEMBLY SEQUENCE

- STEP 1.** REMOVE BLANK FROM FLASHING BY CUTTING ALONG OUTSIDE EDGES OF EXISTING SLOTS.
- STEP 2.** SLIDE FLASHING ONTO ATTIC INLET PRIOR TO INSTALLING ATTIC INLET IN THE ROUGH OPENING.
- STEP 3.** REST FLASHING AGAINST THE ROOF.
- STEP 4.** FASTEN FLASHING TO ATTIC INLET BODY WITH (8) TEK SCREWS (2 PER SIDE) LOCATED APPROXIMATELY AS SHOWN.
- STEP 5.** CAULK ALONG THE TOP EDGE OF FLASHING ON ALL SIDES.
- STEP 6.** SECURE FLASHING TO ROOF AND CAULK AS NEEDED. (HARDWARE NOT INCLUDED)

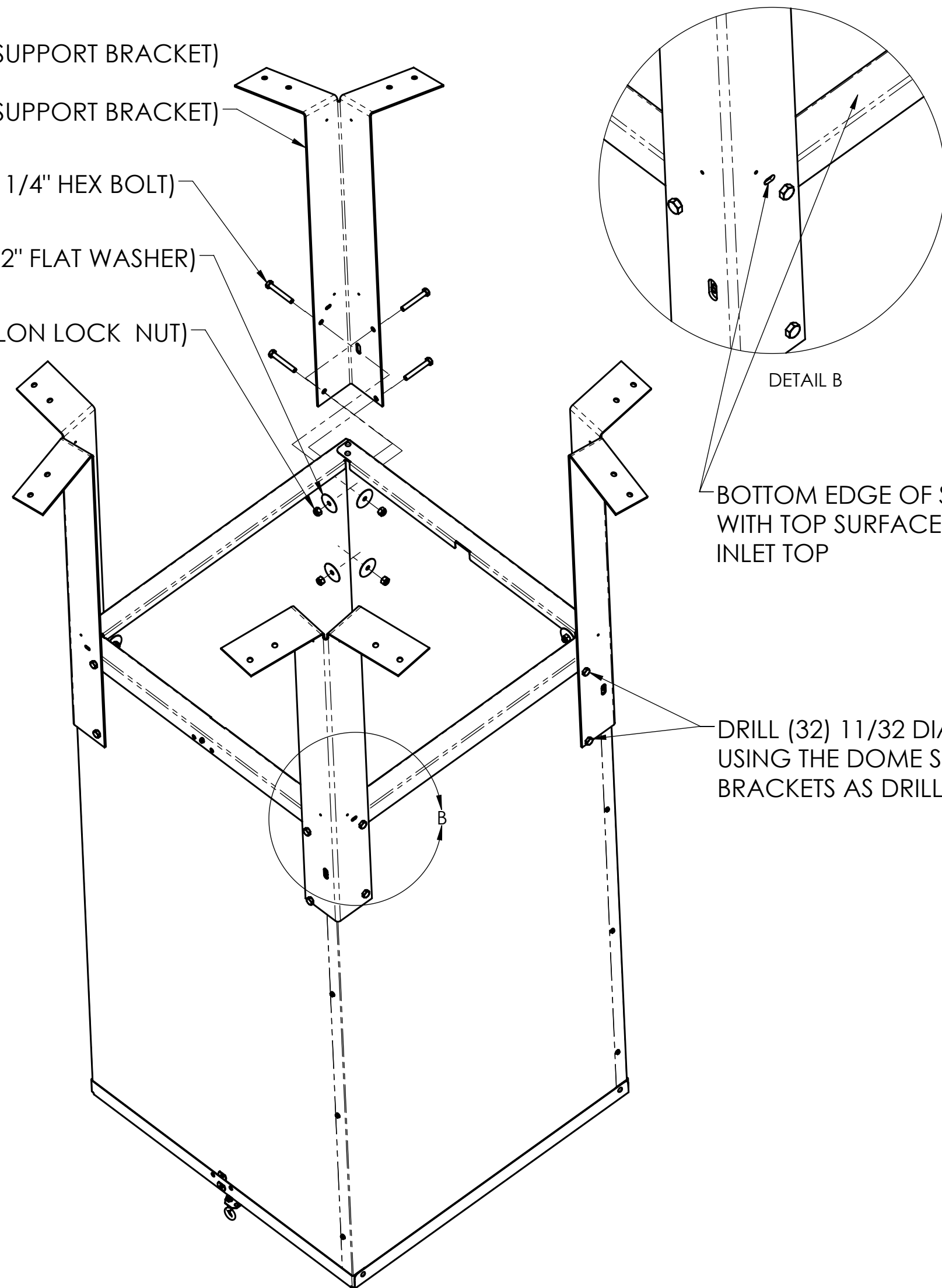
<small> UNSPECIFIED TOLERANCES 2 PLACE ±.060 3 PLACE ±.030 4 PLACE ±.010 HOLE DIA. ±.010 ANGULAR ± 1° </small>	<small> DIMENSINS ARE IN INCHES DIMENSIONS IN () ARE MILLIMETERS UNLESS OTHERWISE SPECIFIED. DO NOT SCALE </small>		 VALCO INDUSTRIES, INC. PO BOX 8 NEW HOLLAND, PA 17557	
	DATE	1/11/22	DESCRIPTION 1 QUICKSHEET, ATTIC INLET DOME	
	DRAWN	TRC	DESCRIPTION 2	
	CHECK			
<small> This drawing and any print thereof is the property of VALCO COMPANIES INC. and is subject to return on request by this company. The information shown is confidential and the recipient by accepting this drawing agrees not to use any information contained thereon in any manner which will be detrimental to VALCO COMPANIES INC. </small>	WEIGHT			
	SCALE	NTS	SHEET 1 OF 4	990292
			REV.	-

ZR1768
(24" DOME SUPPORT BRACKET)
812026
(36" DOME SUPPORT BRACKET)

MH8097
(5/16-18 X 2 1/4" HEX BOLT)

MH8032
(5/16" X 1 1/2" FLAT WASHER)

MH90044
(5/16-18 NYLON LOCK NUT)



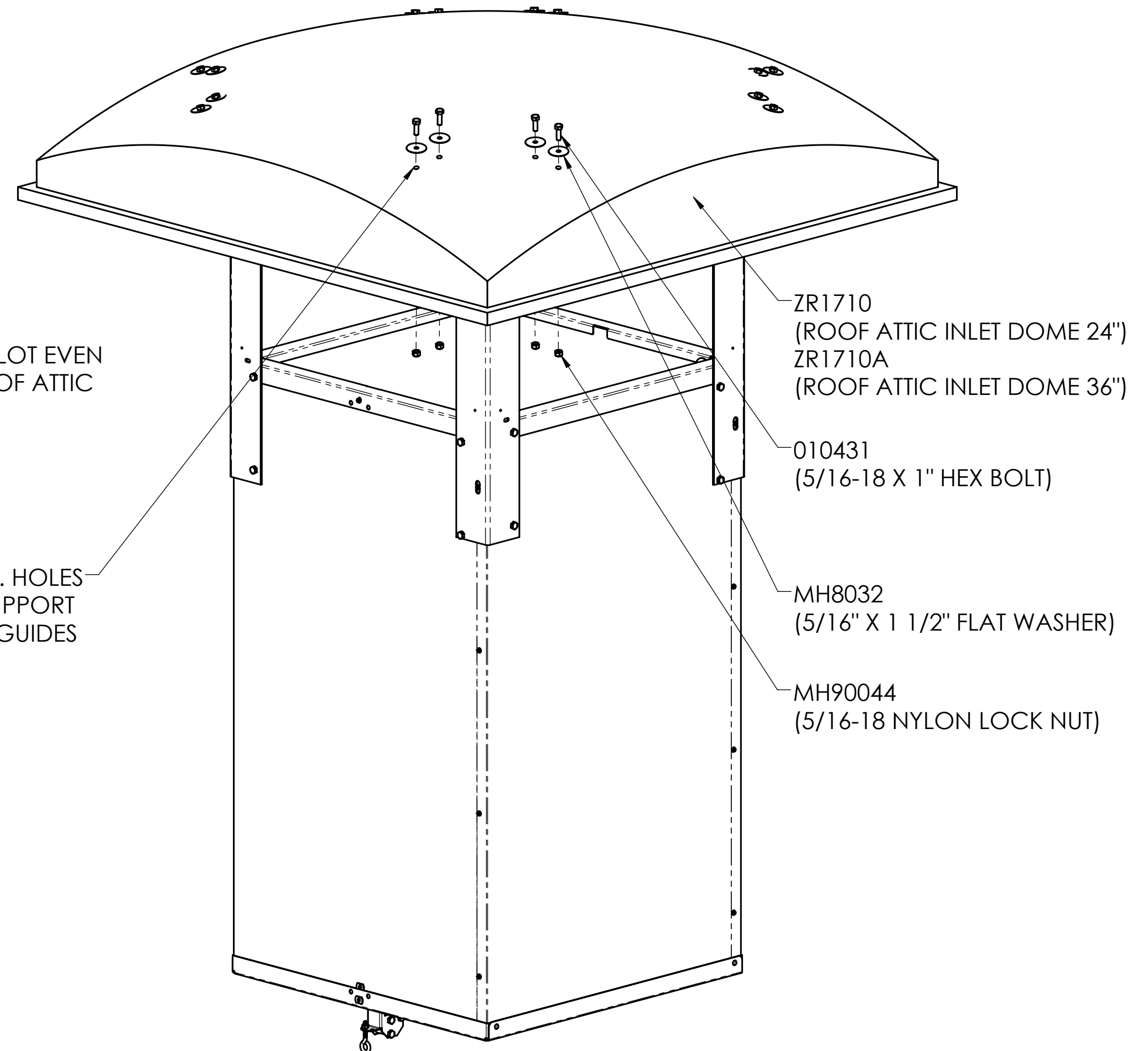
STEP 1. LOCATE DOME SUPPORT BRACKET (ZR1768 OR 812026) ON CORNER OF ATTIC INLET SHAFT AS SHOWN. NOTE THAT THE LOWER EDGE OF THE SLOT IN THE DOME SUPPORT BRACKET IS EVEN WITH THE TOP SURFACE OF THE ATTIC INLET TOP (SEE DETAIL B).

STEP 2. PREDRILL (4) 11/32" DIA. HOLES USING THE DOME SUPPORT BRACKET AS A TEMPLATE.

STEP 3. FASTEN DOME SUPPORT BRACKET WITH (4) 5/16-18 X 2 1/4" HEX BOLTS (MH8097), (4) 5/16" X 1 1/2" FLAT WASHERS (MH8032), (4) 5/16-18 NYLON LOCK NUT (MH90044). WASHERS AND NUTS SHOULD BE ON THE INSIDE OF THE ATTIC INLET. DO NOT OVER TIGHTEN.

STEP 4. REPEAT STEPS 1 THROUGH 3 FOR OTHER (3) DOME SUPPORT BRACKETS.


ATTIC INLET DOME INSTALLATION



STEP 5. CENTER ROOF ATTIC INLET DOME (ZR1710 OR ZR1710A) ON THE (4) DOME SUPPORT BRACKETS.

STEP 6. PREDRILL (16) 11/32" DIA. HOLES USING THE DOME SUPPORT BRACKETS AS TEMPLATES.

STEP 7. FASTEN THE DOME TO THE DOME SUPPORT BRACKETS USING (16) 5/16-18 X 1" HEX BOLTS (010431), (16) 5/16" X 1 1/2" FLAT WASHERS (MH8032), AND (16) 5/16-18 NYLON LOCK NUTS (MH90044). NOTE THAT THE FLAT WASHERS ARE ON THE TOP SIDE OF THE DOME.

UNSPECIFIED TOLERANCES 2 PLACE ±.060 3 PLACE ±.030 4 PLACE ±.010 HOLE DIA. ±.010 ANGULAR ± 1°	DIMENSINS ARE IN INCHES DIMENSIONS IN () ARE MILLIMETERS UNLESS OTHERWISE SPECIFIED. DO NOT SCALE	 VALCO INDUSTRIES, INC. PO BOX 8 NEW HOLLAND, PA 17557	DESCRIPTION 1 QUICKSHEET, ATTIC INLET DOME	
			DATE 1/11/22 DRAWN TRC CHECK WEIGHT SCALE NTS	DESCRIPTION 2 SHEET 2 OF 4 990292 REV. -

BILL OF MATERIALS				
ITEM #	812220 - 24" BIRD NETTING KIT	812320 - 36" BIRD NETTING KIT	DESCRIPTION	QTY.
1	812074	812084	BIRD WIRE	1
2	MH8028	MH8028	WASHER,FLAT,3/16"IDX1"OD,SS	24
3	MH90251	MH90251	SCR,TEK,#8-18X1/2,TEK,SS	28
4	812135	812136	EYEROD, NETTING SS F/ CHIMNEY	4

ATTIC INLET BIRD NETTING INSTALLATION

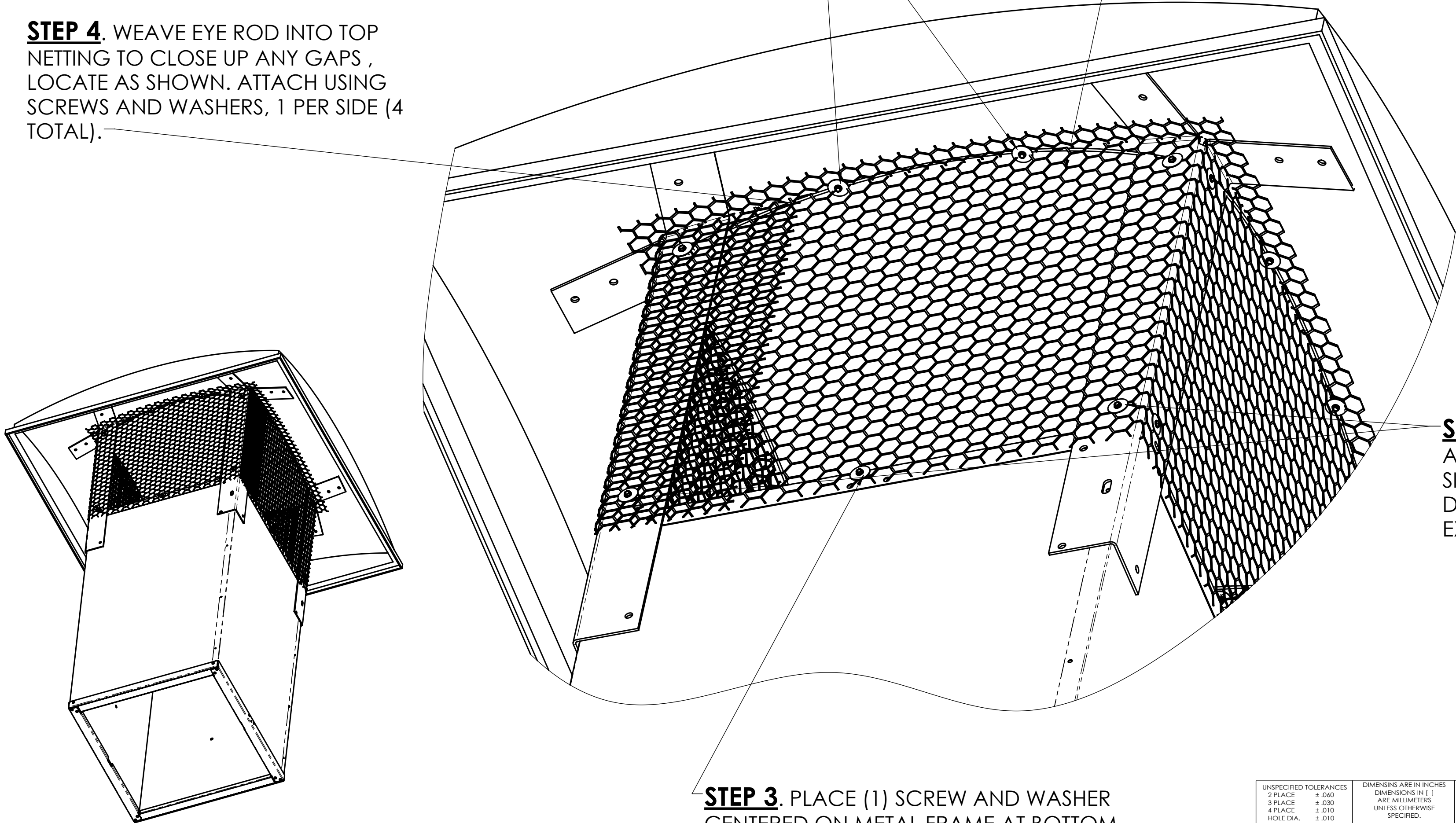
STEP 5 (OPTIONAL). USE (2) SCREWS AND WASHERS TO FASTEN NETTING TO DOME ON EACH SIDE (8 TOTAL).


STEP 4. WEAVE EYE ROD INTO TOP NETTING TO CLOSE UP ANY GAPS , LOCATE AS SHOWN. ATTACH USING SCREWS AND WASHERS, 1 PER SIDE (4 TOTAL).

STEP 1. WRAP BIRD NETTING AROUND OUTSIDE OF VERTICAL DOME SUPPORTS. LOCATE AS SHOWN.

STEP 2. PLACE (2) SCREWS AND WASHERS ON EACH SIDE OF THE VERTICAL DOME SUPPORTS USING EXISTING HOLES (8 TOTAL).

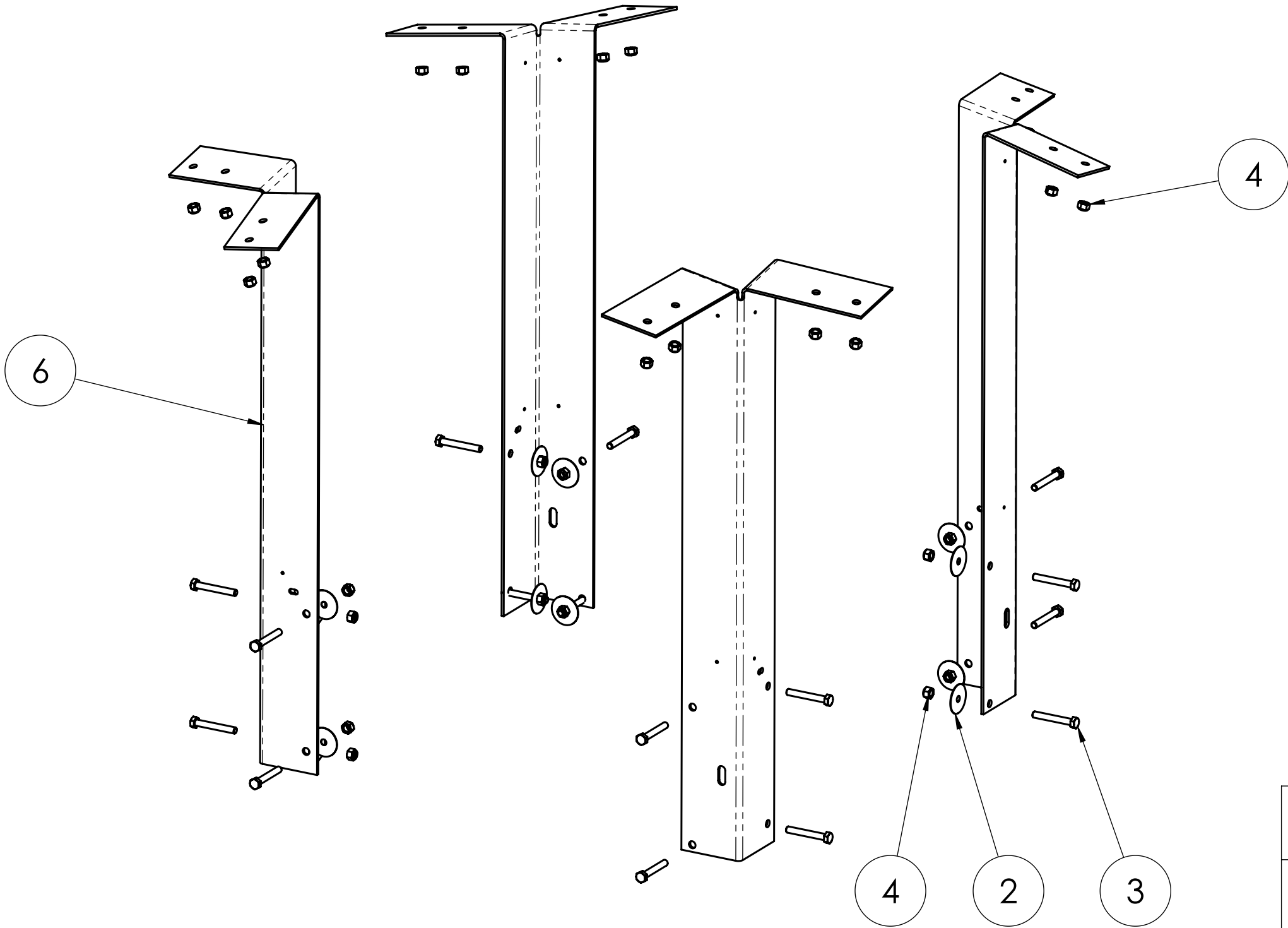
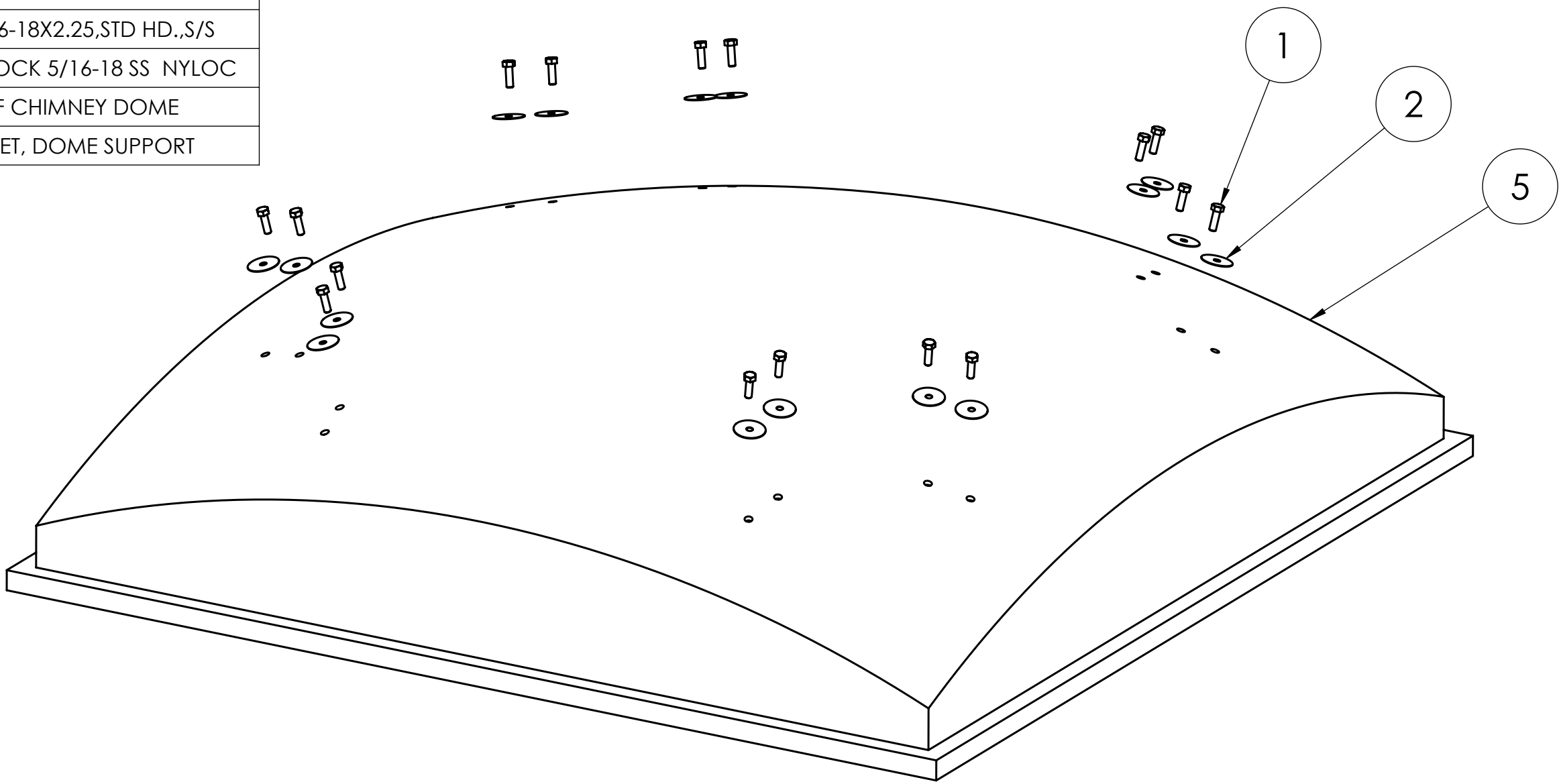
STEP 3. PLACE (1) SCREW AND WASHER CENTERED ON METAL FRAME AT BOTTOM OF WIRE (4 TOTAL).




<small>UNSPECIFIED TOLERANCES 2 PLACE ±.060 3 PLACE ±.030 4 PLACE ±.010 HOLE DIA. ±.010 ANGULAR ± 1°</small> <small>This drawing and any print thereof is the property of VALCO COMPANIES INC. and is subject to return on request by this company. The information shown is confidential and the recipient by accepting this drawing agrees not to use any information contained thereon in any manner which will be detrimental to VALCO COMPANIES INC.</small>	<small>DIMENSINS ARE IN INCHES DIMENSIONS IN [] ARE MILLIMETERS UNLESS OTHERWISE SPECIFIED. DO NOT SCALE</small>		 VALCO INDUSTRIES, INC. <small>PO BOX 8 NEW HOLLAND, PA 17557</small>
	DATE	1/11/22	
	DRAWN	TRC	
	CHECK		
	WEIGHT		DESCRIPTION 1 QUICKSHEET, ATTIC INLET DOME
	SCALE	NTS	
SHEET 3 OF 4		990292	REV. -

BILL OF MATERIALS				
ITEM #	812265 (24" INLET)	812385 (36" INLET)	QTY	DESCRIPTION
1	010431	010431	16	SCREW, 5/16-18 X 1 HHCS SS
2	MH8032	MH8032	32	WASHR,FLAT,5/16"IDX1 1/2"OD SS
3	MH8097	MH8097	16	BOLT,5/16-18X2.25,STD HD.,S/S
4	MH90044	MH90044	32	NUT, HEX LOCK 5/16-18 SS NYLOC
5	ZR1710	ZR1710A	1	ROOF CHIMNEY DOME
6	ZR1768	812026	4	BRACKET, DOME SUPPORT

ATTIC INLET DOME REPAIR PARTS



UNSPECIFIED TOLERANCES 2 PLACE ±.060 3 PLACE ±.030 4 PLACE ±.010 HOLE DIA. ±.010 ANGULAR ± 1°	DIMENSINS ARE IN INCHES DIMENSIONS IN () ARE MILLIMETERS UNLESS OTHERWISE SPECIFIED. DO NOT SCALE		 VALCO INDUSTRIES, INC. PO BOX 8 NEW HOLLAND, PA 17557
	DATE	1/11/22	
	DRAWN	TRC	DESCRIPTION 1 QUICKSHEET, ATTIC INLET DOME
	CHECK		DESCRIPTION 2
This drawing and any print thereof is the property of VALCO COMPANIES INC. and is subject to return on request by this company. The information shown is confidential and the recipient by accepting this drawing agrees not to use any information contained thereon in any manner which will be detrimental to VALCO COMPANIES INC.	WEIGHT		SHEET 4 OF 4
	SCALE	NTS	
		990292	REV. -