



Quick Sheet Instructions

Hemisphere Chimney Actuation Conversion Kit

Installation Instructions:

Steps:

1. Set actuator to have inlet in closed position.
2. Disconnect cords from homerun line.
3. Trace a line around the panels of the chimney (32 1/2" From the top). Using a saw, cut the perimeter shown in **Figure 1**. Remove the top Aluminum cap (P-N SMP8016) and then reinstall on the newly cut section.

CAUTION: CHIMNEY SKIN MAY BE ALUMINUM SO USE A MULTIMATERIAL BLADE TO CUT.

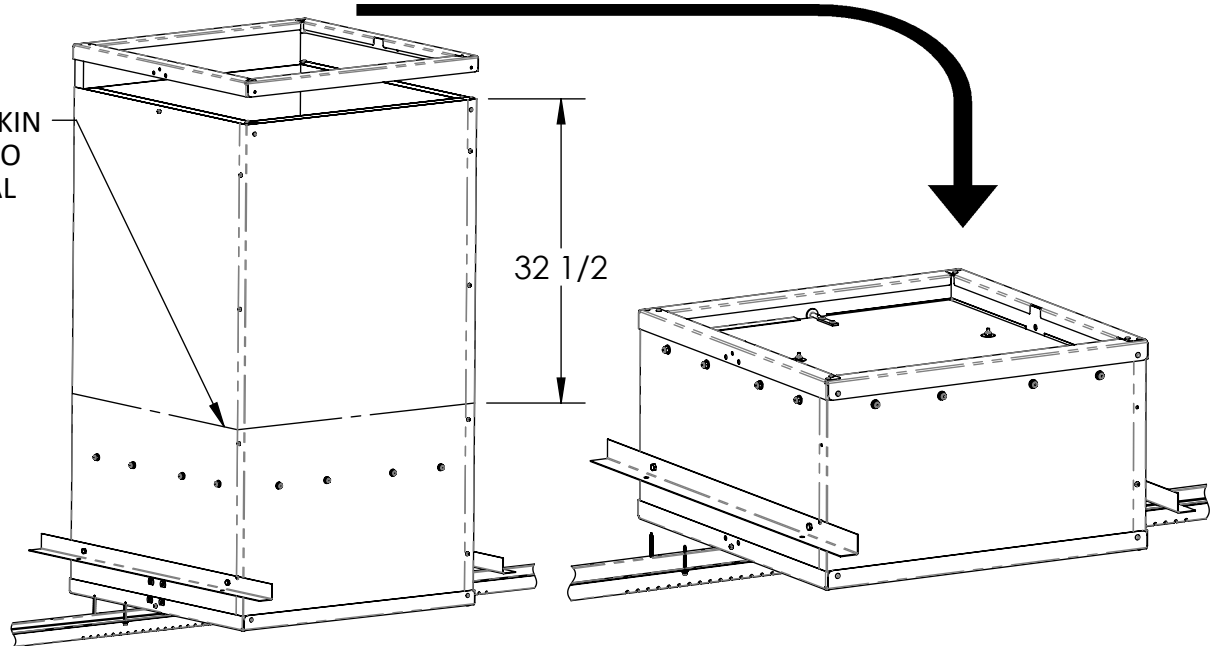


Figure 1

Bottom view: Trough not shown for visibility.

4. Install cable and spring bracket on the bottom of the damper door as shown in **Figure 3** using (2) #10-24 x 1-1/2" Bolts, (2) Flat Washers, (2) Nyloc nuts to hold the bracket to the damper door. Hardware shown in **Figure 2**.

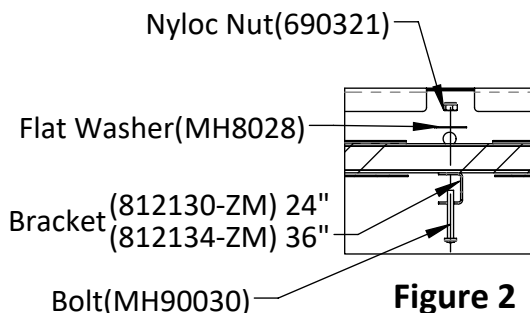


Figure 2

ARROW SHOWS
DIRECTION OF
ACTUATOR

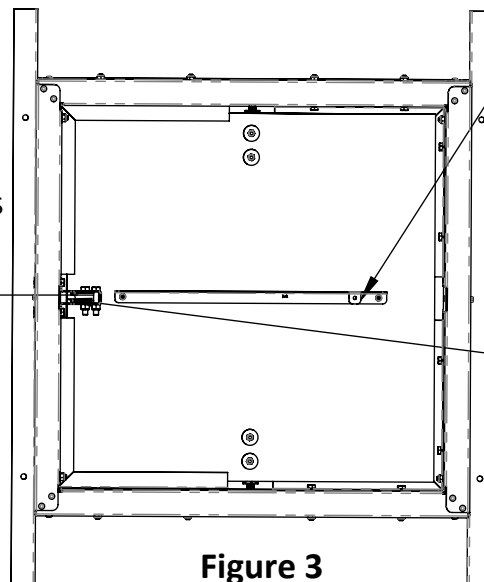


Figure 3

Note: Position of tab in relation to the pulley.

If replacing the pulley, use (4) #10 x 3" Screws (P-N 690442) to install.

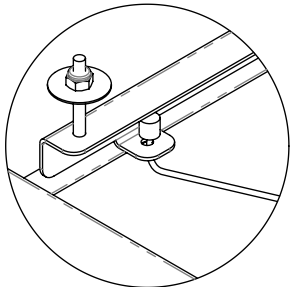


Quick Sheet Instructions

Hemisphere Chimney Actuation Conversion Kit

Installation Instructions Continued:

5. Install the new cable (P-N 812103) through the bracket and run it through the pulley located above the trough shown in the section view in **Figure 4**. Attach to homerun line.



Detailed view of cable attached to bracket.

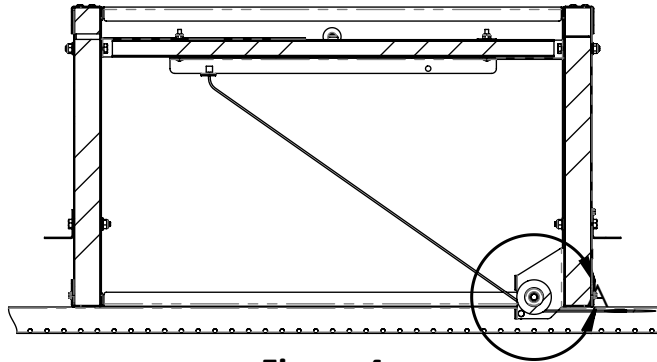
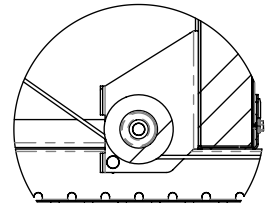


Figure 4



DETAIL A
SCALE 1 : 5

6. Install the new spring for the damper (P-N FP831) through the hole located on the other side of the bracket from where the cable attaches as seen in **Figure 5**. The other end should then be hooked through the hole in the trough that is specific to the chimney size. This ensures the proper tension is applied.

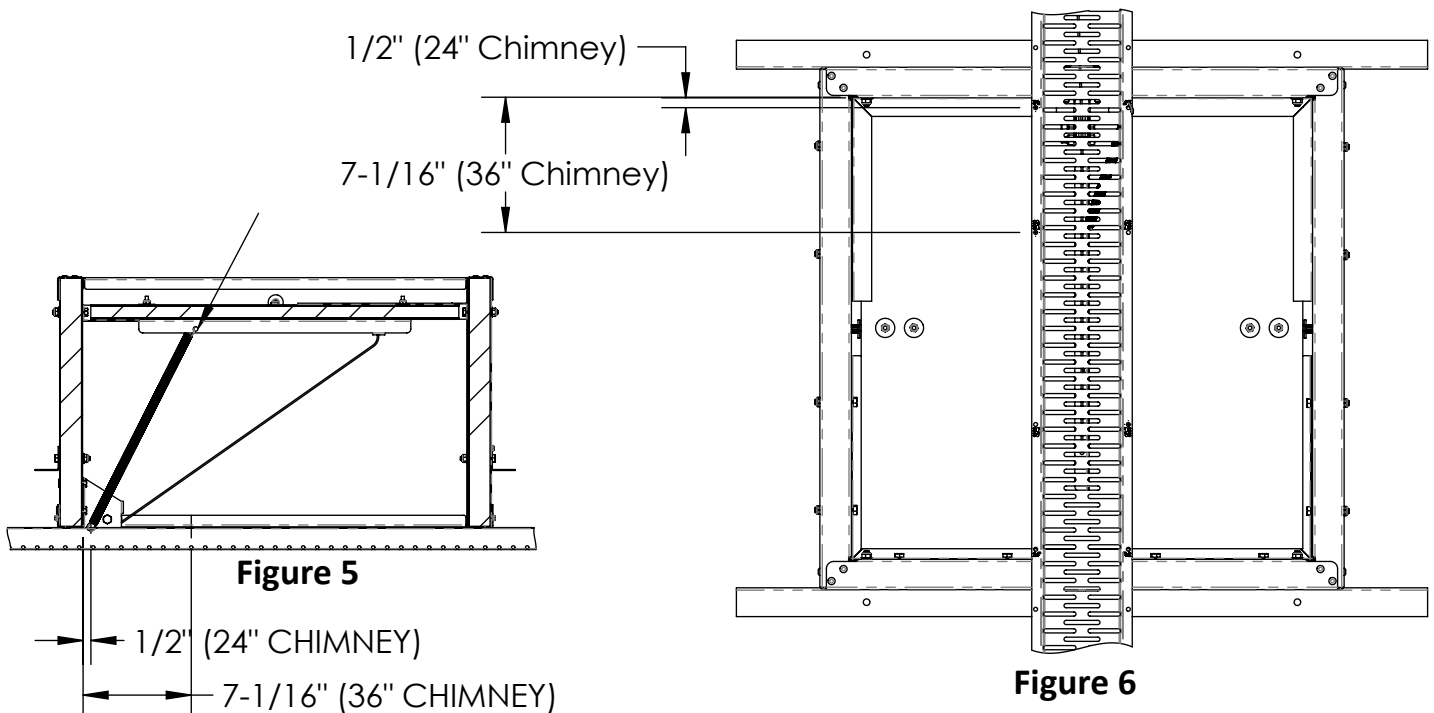


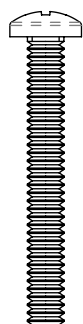
Figure 5

Figure 6

If an older version of the trough is being used, a 3/16" hole will need to be drilled to mount the spring.

Complete Parts List For Conversion

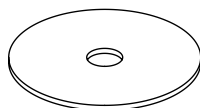
	Item No.	Part No.	Description	Qty
Hemisphere Chimney part no - 812245/812265/812365/812385				
NEEDED:	1	690321	BOLT, 10-24 X 1-1/2 PHILLIPS SS	2
	2	812130-ZM	CABLE AND SPRING CHANNEL, FOR 24"	1
		812134-ZM	CABLE AND SPRING CHANNEL, FOR 36"	1
	3	FP831	SPRING, DAMPER DOOR, 12-3/4" LONG	1
	4	MH8028	WASHER, FLAT, 3/16" ID, SS	2
OPTIONAL:	5	MH90030	NUT, HEX NYLOC #10-24, SS	2
	6	690442	SCREW, #10 X 3" WITH SEAL	4
	7	812103	CABLE, 86" LONG WITH STOP	1
	8	812120	PULLEY ASSEMBLY, SINGLE, VERTICAL MOUNT	1
	9	972029	GUARD, HOMERUN CABLE, 102.5" LONG	1



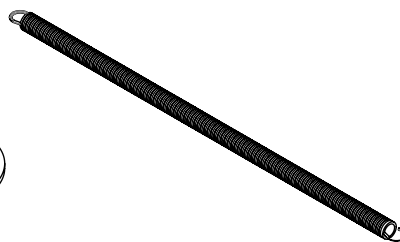
#10-24 x 1-1/2 Bolt
690321



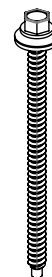
#10-24 SS
Nyloc Nut
MH90030



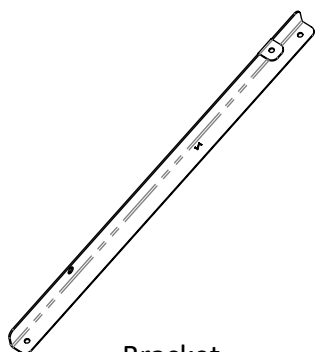
3/16" ID x 1" OD
Flat Washer
MH8028



Damper Door Spring
FP831

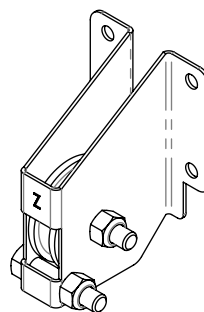


#10 x 3" Screw w/seal
690442

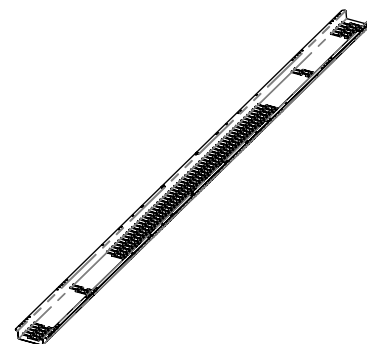


Bracket
812130-ZM/812134-ZM

Cable
812103



Single Pulley
812120



Homerun Cable Guard
972029

North America:

Phone: 800.99VALCO (800.998.2526)
Fax: 419.678.2200
Email: sales@val-co.com

International:

Phone: (+1) 419.678.8731
Fax: (+1) 419.678.2200
Email: intl.sales@val-co.com