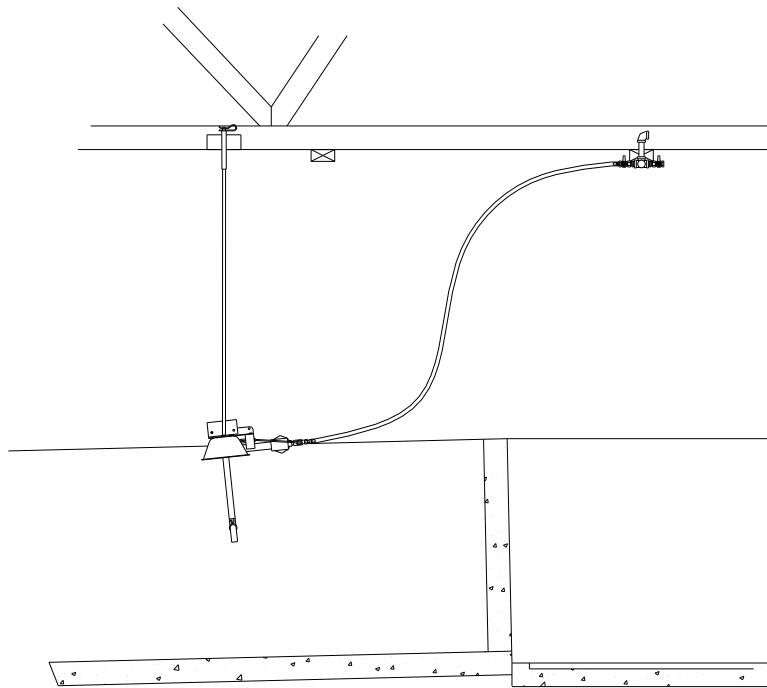
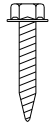


Val-Co Radiant Heater Hanging Bracket Assembly



STEP 1.

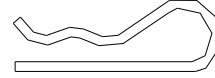
Read through all steps completely prior to beginning each step. Unpack and become familiar with all parts and hardware supplied with the Radiant Heater Hanging Bracket Assembly.



MH90241
#14 X 1 1/2", TYPE AB
SCREW, PN HD, PH, S.S.
2 EACH



012687
#10 S.S.
LOCK WASHER
2 EACH



012746
HITCH PIN CLIP
1 EACH



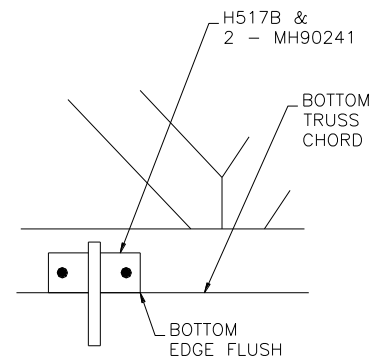
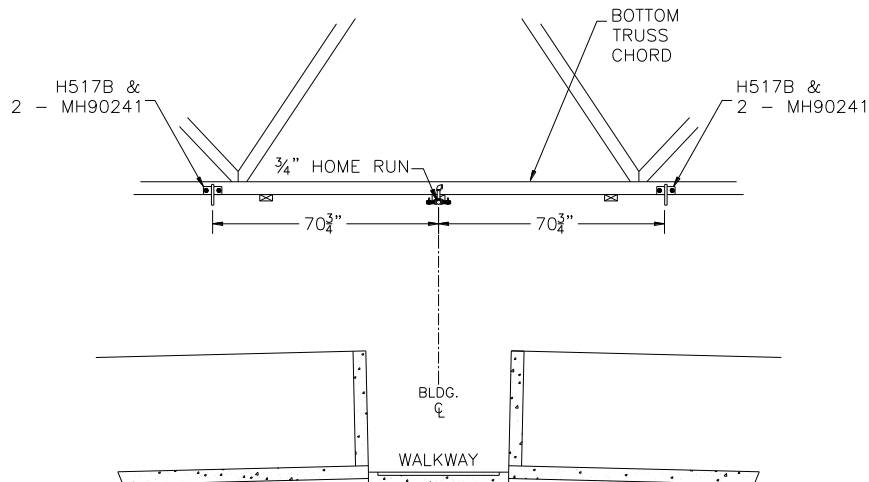
HW-90
#10-24 X 3/4"
SCREW, PN HD, PH, S.S.
2 EACH



012686
#10-24
HEX NUT, S.S.
2 EACH

STEP 2.

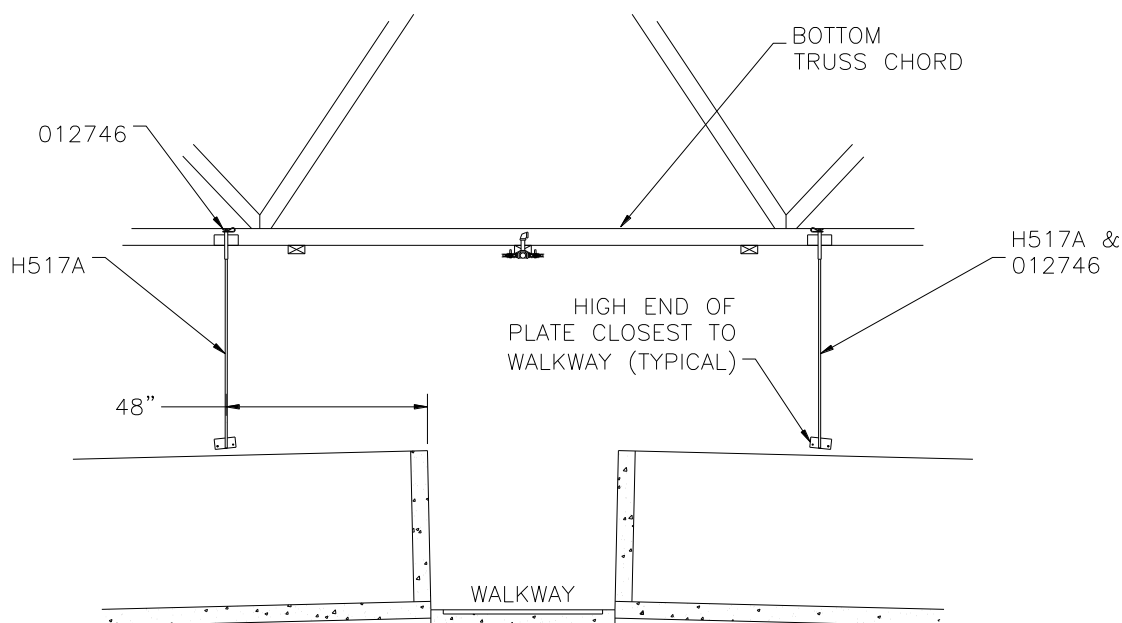
On the truss closest to the center of the pen, locate the position for the Truss Bracket (Part # H517B) on the bottom truss chord at 70 3/4" from the building center line. Using two #14 x 1 1/2" Screws (Part # MH90241) attach the Truss Bracket so the bottom edge is flush with the bottom edge of the bottom truss chord.



TRUSS BRACKET DETAIL
SCALE 5X

STEP 3.

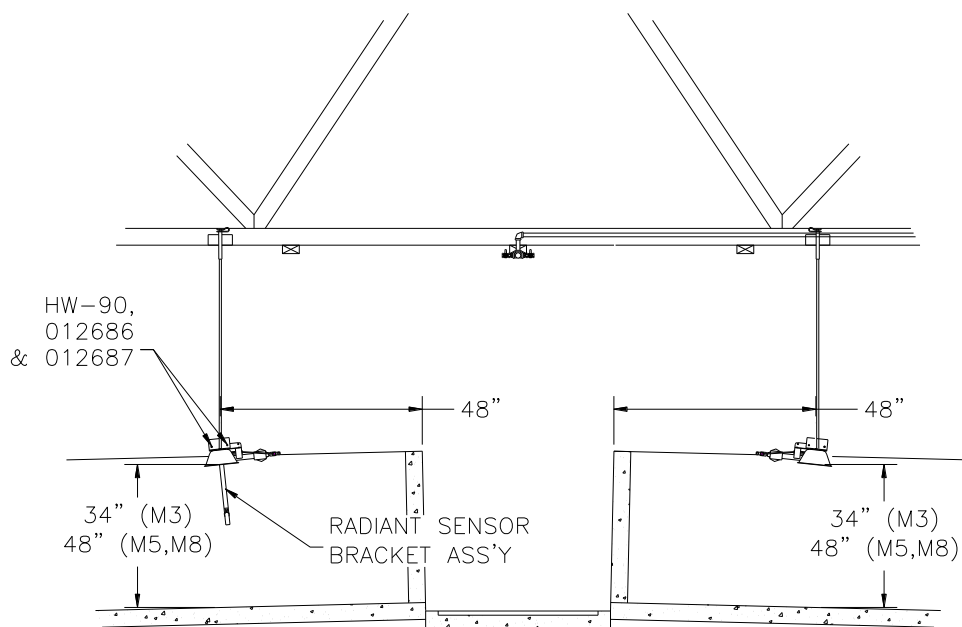
Insert the top end of the Heater Rod Assembly (Part # H517A) into the square tube of the Truss Bracket from the bottom upward. Apply the Hitch Pin Clip (Part # 012746) to the hole near the top of the Heater Rod Assembly for the M3 radiant heater and to the middle hole for the M5 or M8 radiant heater. Take care to position the rod & heater plate with the plate tilted as shown below.



STEP 4.

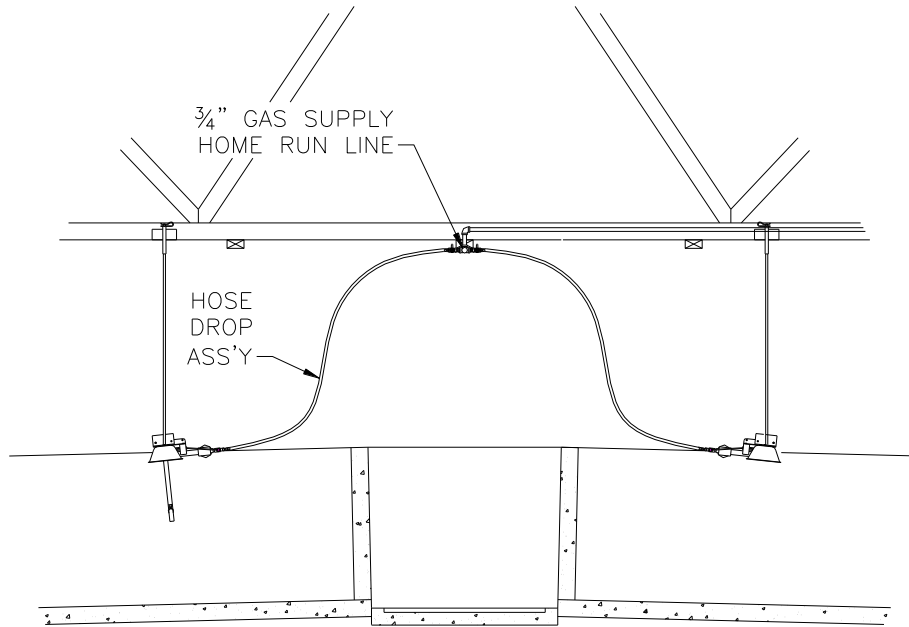
With the Heater Rod Assembly in the lowered position, fasten the radiant heater to the heater plate on the Heater Rod Assembly using two #10-24 x $\frac{3}{4}$ " Screws (Part # HW-90), #10 Lock Washers (Part # 012687) and #10 Hex Nuts (Part # 012686). Refer to the drawing below for correct positioning of the heater.

The M-3 heater intake screen assembly may need to be rotated 90 degrees to clear the heater rod mounting plate. Take care not to kink the copper tube when making this rotation.



STEP 5.

Connect the heater to the $\frac{3}{4}$ " Gas Supply Home Run Line with the hose drop according to local and national gas code.



INQUIRIES



210 E. Main Street
Coldwater, OH 45828
Ph. 800-998-2526