



Poult Winch

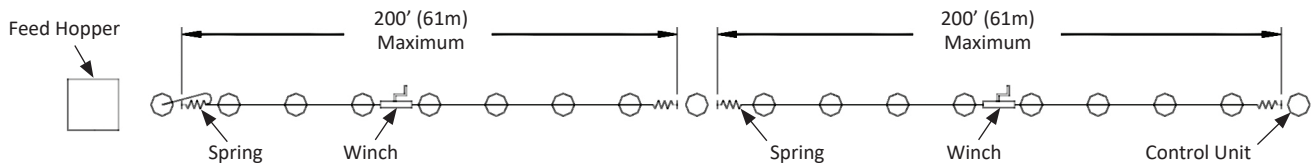
460187

Quick Sheet

Operation

The 460187 Poult Winch is designed to attach to any ribbed or smooth 1.75" OD feed tube. This winch is designed to actuate the feed level cone on the Turkey Poult Pan.

FIGURE 1

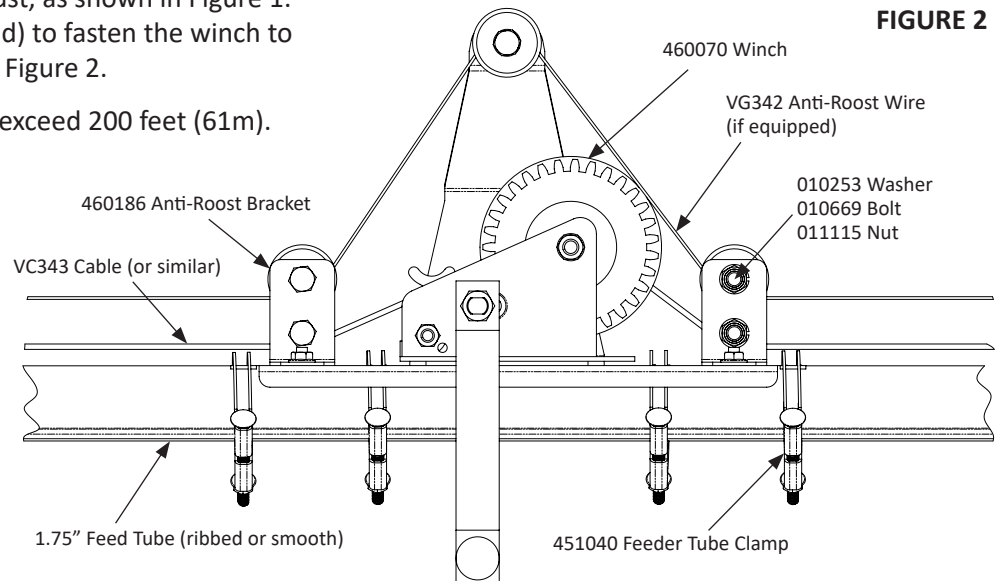


Installation of the Winch Adjustable Feed Level Tube System

Step 1: The winch should be placed in the center of the line of feed level tubes it will adjust, as shown in Figure 1. Use four 451040 clamps (provided) to fasten the winch to the feeder line tube, as shown in Figure 2.

NOTE: The line length must *NOT* exceed 200 feet (61m).

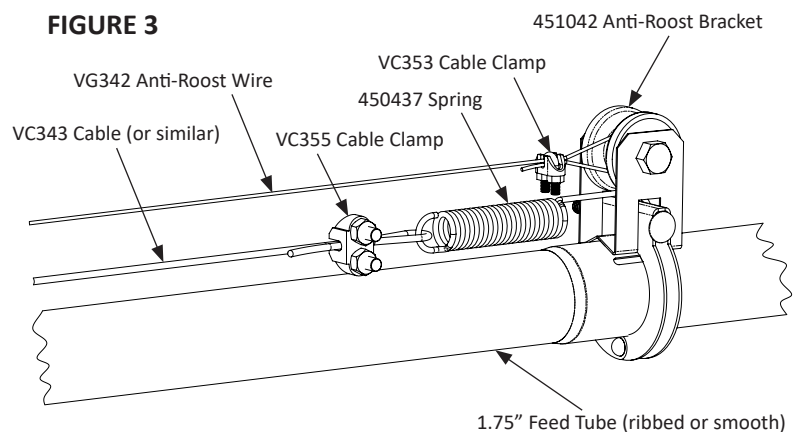
FIGURE 2



Step 2: Route the cable through the holes in the winch drum. Turn the winch handle clockwise a minimum of two revolutions to wind some cable onto the winch drum.

Step 3: Attach spring to anti-roost bracket on each side of the winch, as shown in Figure 3. Attach the bracket/spring assemblies to the feeder line tube at a maximum distance of 100 feet (30m) from the winch.

FIGURE 3

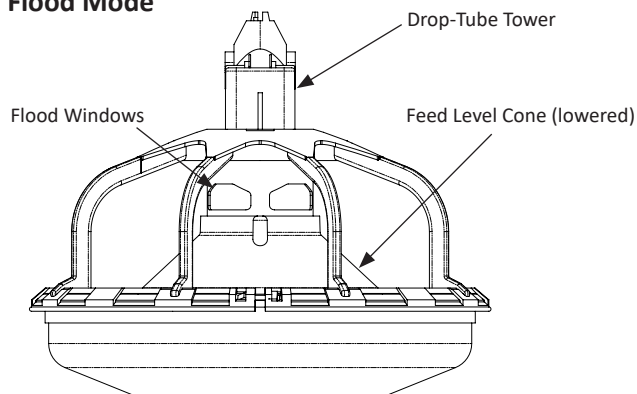


Setting Pans

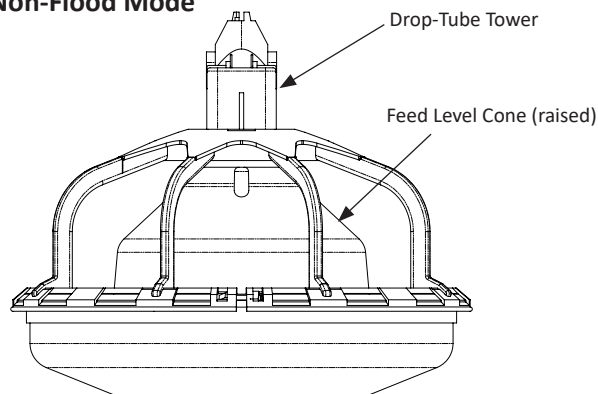
460350 High Flood Pan

When flood mode is desired, the cone should be in the lowest position, allowing the feed to flow out of the high flood windows and completely fill the feed pan. When flood mode is not desired, the feed cone should be winched up to cover the flood windows in the drop-tube tower.

Flood Mode



Non-Flood Mode

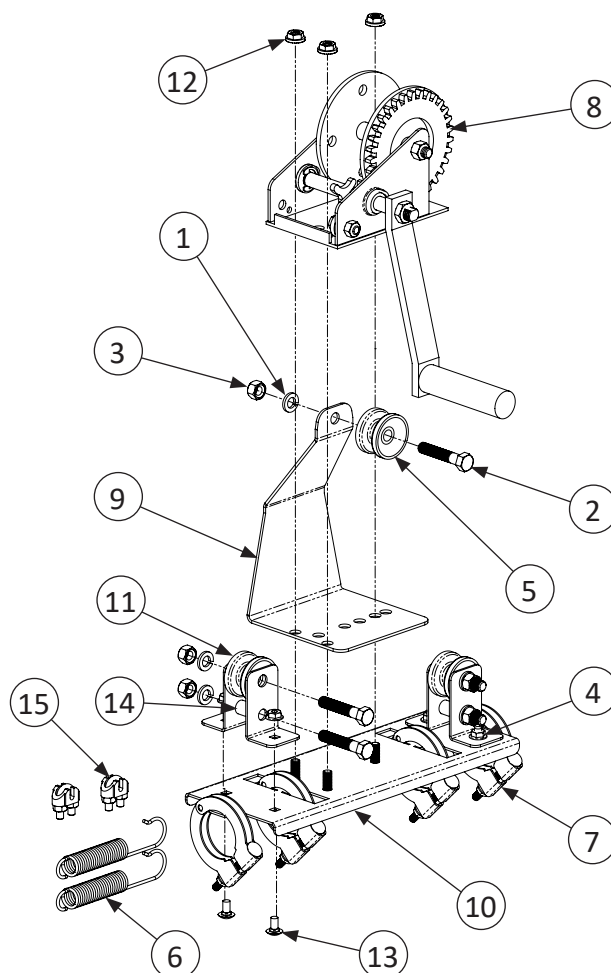


460200

460200 pan does not have flood windows in the tower. For this pan, flood mode setting is when the cone is raised and non-flood mode is when the cone is lowered.

Poult Winch Repair Parts

KEY	PART #	QTY	DESCRIPTION
460187 - POULT WINCH ASSEMBLY			
1	010253	5	3/8" LOCK WASHER
2	010669	5	3/8-16 X 2" HEX BOLT
3	011115	5	3/8-16 HEX NUT
4	012792	4	1/4-20 SERRATED FLANGE HEX NUT
5	450419	3	WIRE PULLEY INSULATOR
6	450437	2	SPRING FOR ANTI-ROOST WIRE
7	451040	4	FEEDER TUBE CLAMP
8	460070	1	TURKEY WINCH
9	460076	1	WINCH HANGER BRACKET
10	460185	1	POULT WINCH BRACKET
11	460186	4	POULT WINCH ANTI-ROOST BRACKET
12	501441	3	5/16-18 SERRATED FLANGE HEX NUT
13	690058	4	1/4-20 X 1/2" CARRIAGE BOLT
14	690452	2	ROUND SPACER, STAINLESS STEEL
15	VC355	2	3/16" CABLE CLAMP



North America:

Phone: 800.99VALCO; 800.998.2526

Fax: 419.678.2200

Email: sales@val-co.com

990301

REV [-]

International:

Phone: (+1) 419.678.8731

Fax: (+1) 419.678.2200

Email: intl.sales@val-co.com