



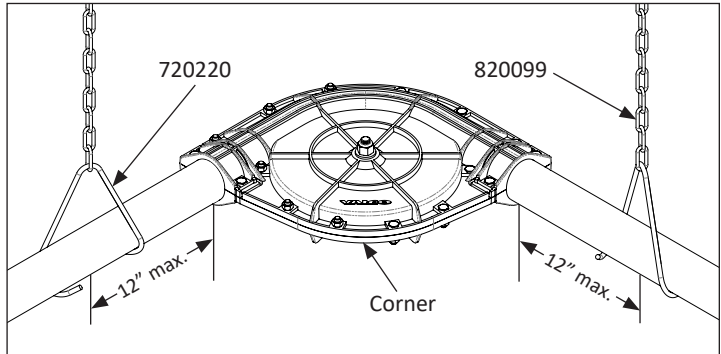
ClearFlo Chain Disk Corner

780090

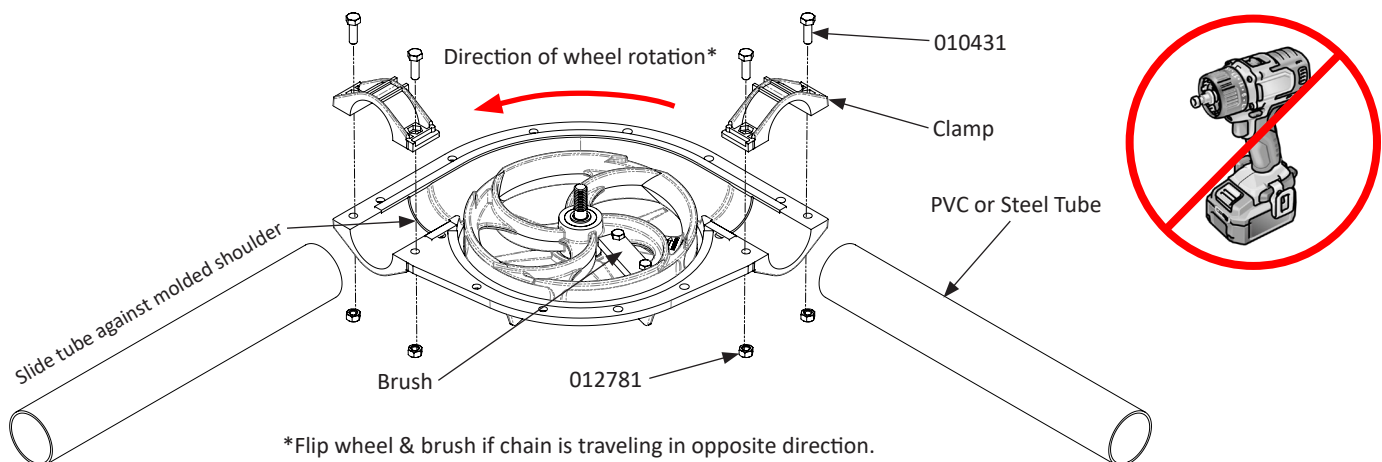
Quick Sheet

Corner & Tubing Suspension

- PVC tubing must be supported every 4 feet or less; steel tubing must be supported every 8 feet or less.
- Corners must be suspended within 12" on both incoming and outgoing tubes.
- Tubing must be straight. Do not force bows into the tubing to get around obstacles. For PVC tube, secure the weight of every drop to feeder to avoid bowing. If tubing develops bows or unevenness, more suspension points must be added. Uneven or bowed tubing will cause premature tube wear and void the warranty.



1. Add support on each side of the corners, as shown above. Corners should be a minimum of 24" (60.96cm) apart.



2. Place tubing inside the corner and butt up into the molded shoulder.
3. Install clamps and tighten the bolts to hold tubing in place.
4. Do not install corner top until chain disk has been pulled through.
5. Install the corner tops with the provided 5/16 x 1-1/4" bolts and 5/16" nuts. Torque the nuts to 5ft-lbs. [6.8Nm].
DO NOT OVER-TIGHTEN. DO NOT USE IMPACT DRIVER.
6. Install the 1/2" washer & lock nut on the shaft. Torque the lock nut to 10ft-lbs. [13.6Nm]. **DO NOT OVER-TIGHTEN.**
7. Replace all top covers of the corner assemblies before completing the final connection and tension of the chain.
Failure to do so can warp the housing of the corner assemblies.

Notes:

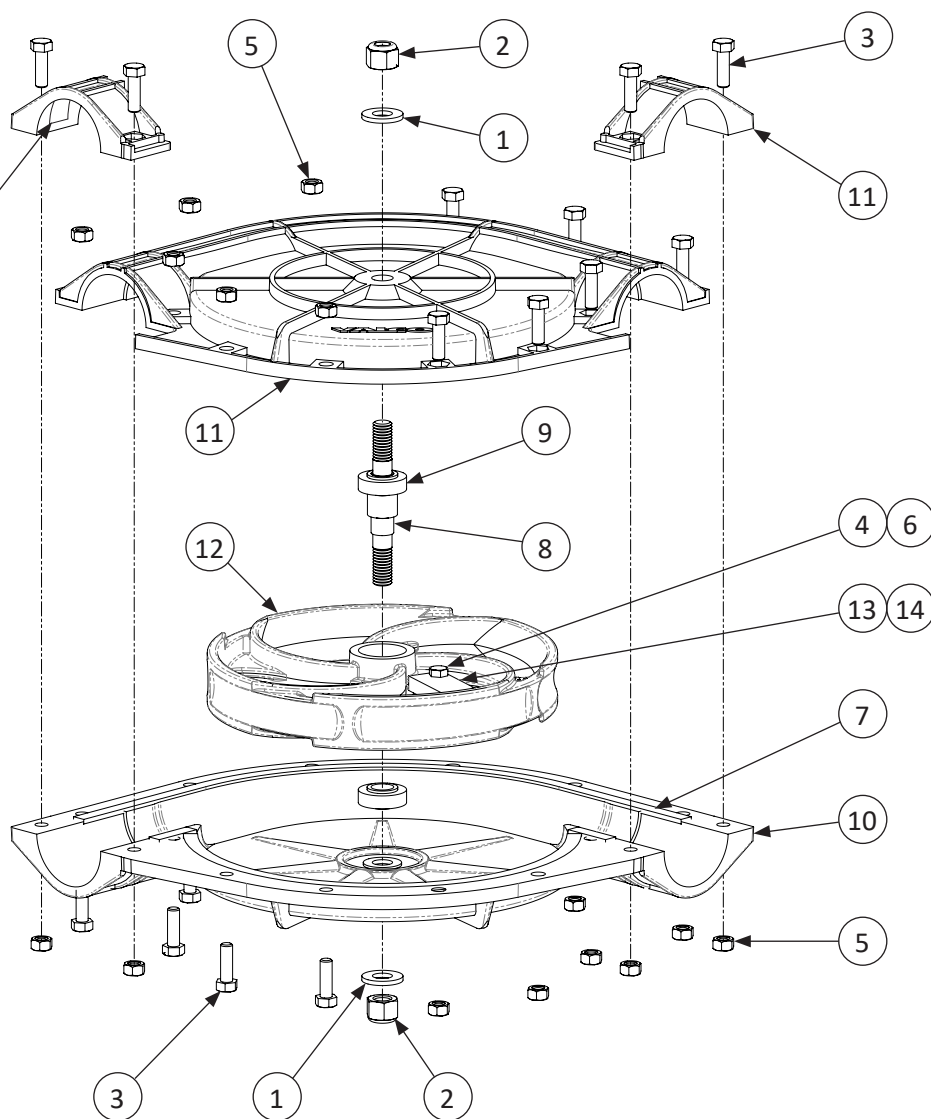
- Replace all top covers of the corner assemblies before completing the final connection and tension of the chain.
Failure to do so can warp the housing of the corner assemblies.
- When used in horizontal orientation, locate brush against bottom housing. This may require flipping the brush to the other side of the wheel, depending on corner orientation.
- For PVC tubing, place (2) foam strips inside top corner clamps, as shown in exploded view (Page 2).

990239
REV [B]

ClearFlo 90° Chain Disk Corner Assembly (780090) - Parts List

NOTE:

For PVC tubing, install the 2" long foam strip (2) places.
(provided in hardware bag)



ITEM #	PART #	QTY	DESCRIPTION
780090 - CLEARFLO 90° CHAIN DISK CORNER ASSEMBLY			
1	010406	2	1/2" SS FLAT WASHER
2	010413	2	1/2-13 SS NYLOK NUT
3	010431	16	5/16-18 X 1" SS HEX BOLT
4	010616	2	1/4-20 X 5/8" HEX SCREW
5	012781	16	5/16-18 NYLON HEX NUT
6	012793	2	1/4-20 HEX LOCKNUT
7	501400	3	1/8" X 3/8" WEATHERSTRIPPING
8	780003	1	CHAIN DISK CORNER POST
9	780005	2	15MM ID x 32MM OD BALL BEARING
10	780085	1	CLEARFLO CORNER HOUSING, BOTTOM
11	780086	1	CLEARFLO CORNER HOUSING, TOP
12	780087	1	CLEARFLO CORNER WHEEL
13	780091	1	HORIZONTAL BRUSH, 3" LONG
14	780092	1	BRUSH HOLDER, 3" LONG

North America:

Phone: 800.99VALCO; 800.998.2526

Fax: 419.678.2200

Email: sales@val-co.com

International:

Phone: (+1) 419.678.8731

Fax: (+1) 419.678.2200

Email: intl.sales@val-co.com