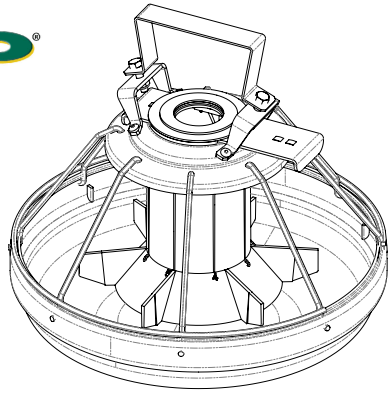


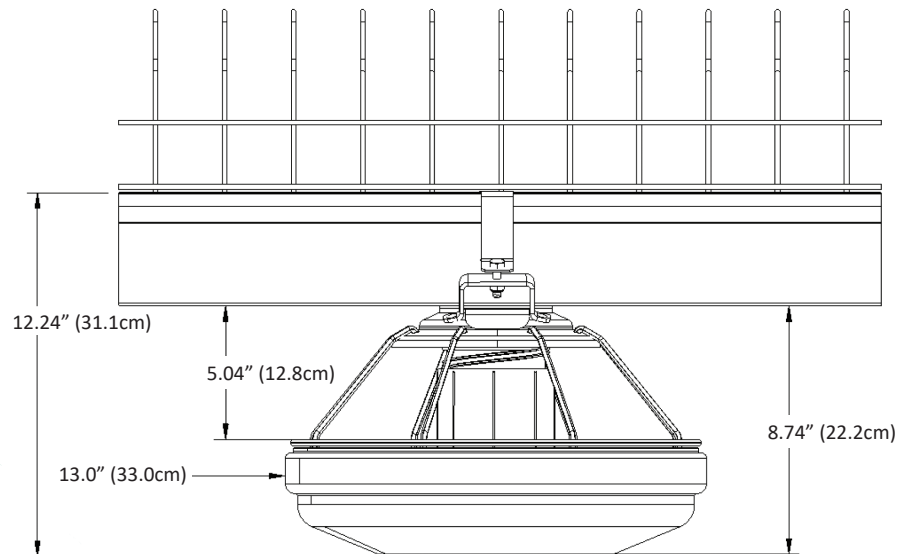


# HANGING PAN SPIKE FEEDER 455160

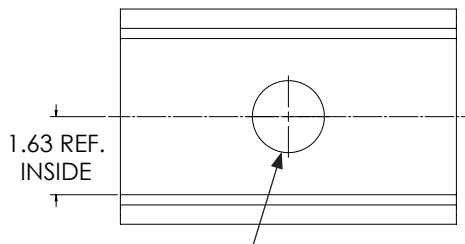
## Quick Sheet Installation instructions



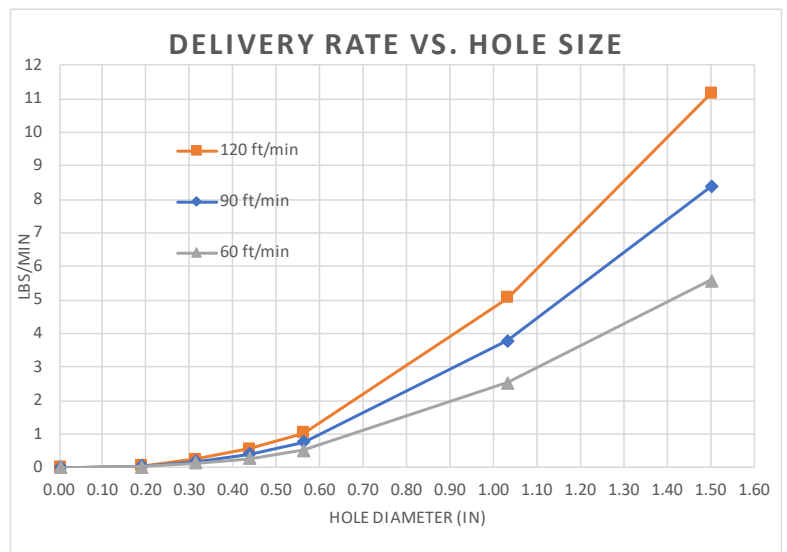
- Use hanging pan feeders to increase feeding space.
- The 8 spoke steel grill is strong and durable.
- Pans come standard with an integrated shutoff that keeps towers from filling with feed when closed.
- Adjustable collar allows users to vary feed capacity.
- Internal feed restrictor included to reduce tower capacity.



1. Drill hole in the center of trough.



Refer to chart for hole size.

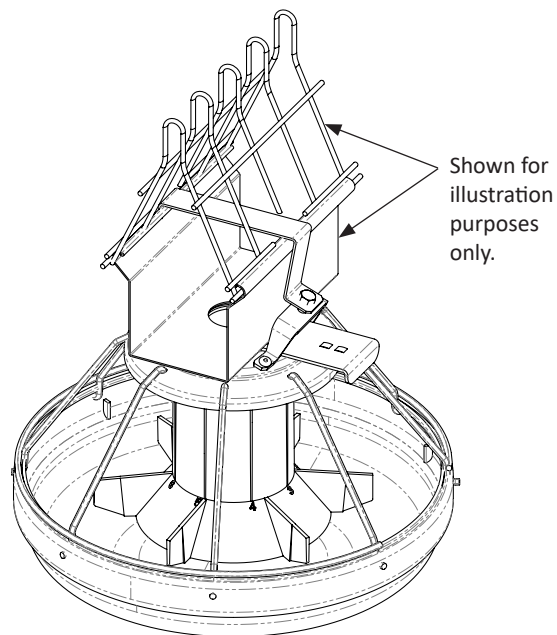
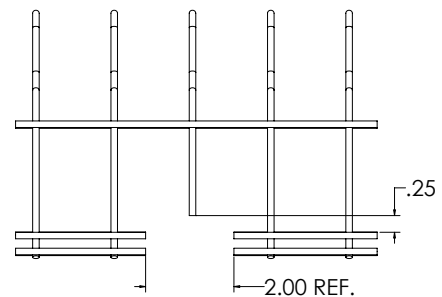
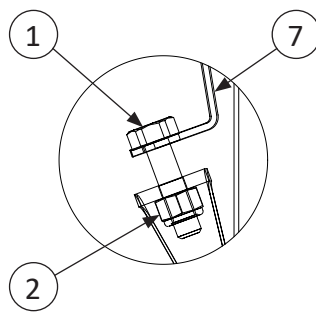
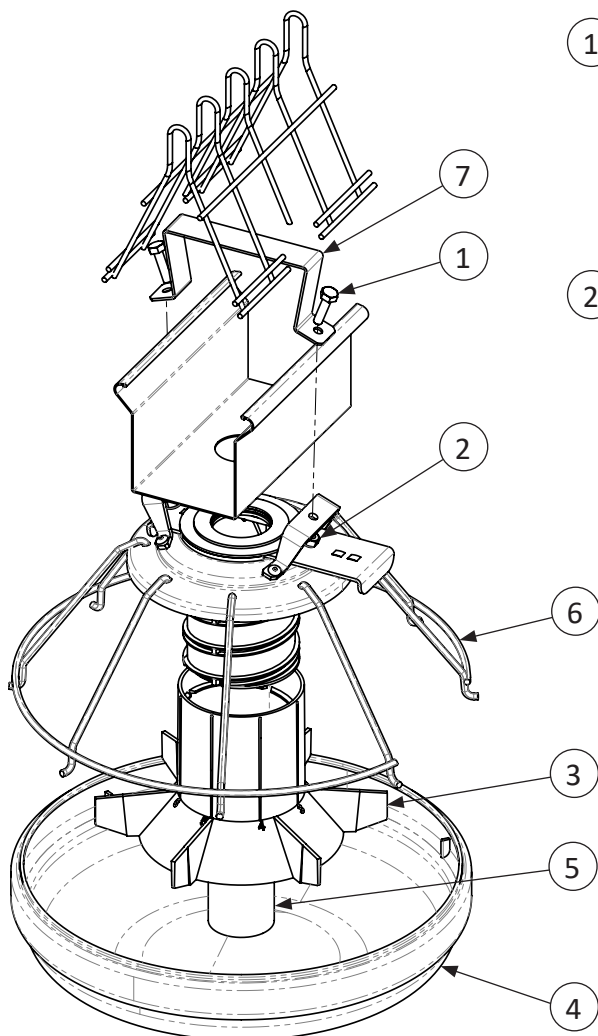


## Quicksheet Installation Instructions - continued

3. Assemble as shown in view below.

4. Tighten flange until parallel.

5. Cut opening for rooster hanger bracket.



KEY	PART #	QTY	DESCRIPTION
<b>ASSEMBLY</b>			
1	010619	2	1/4" X 5/8" HEX HEAD BOLT
2	012793	2	1/4-20 HEX LOCK NUT
3	450191	1	PARTITIONED FEED LEVEL TUBE
4	450406	1	HIGH CAPACITY PLASTIC PAN
5	450594	1	PAN FEED RESTRICTOR
6	455161	1	8 SPOKE SPIKE GRILL W/BRACKETS
7	455167	1	TROUGH FEEDER HANGER BRACKET

### North America:

Phone: 800.99VALCO; 800.998.2526

Fax: 419.678.2200

Email: [sales@val-co.com](mailto:sales@val-co.com)

990235

TRC 11-4-2019

### International:

Phone: (+1) 419.678.8731

Fax: (+1) 419.678.2200

Email: [intl.sales@val-co.com](mailto:intl.sales@val-co.com)