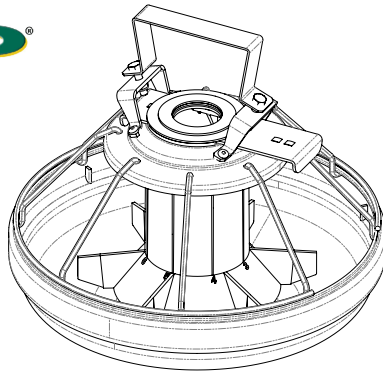


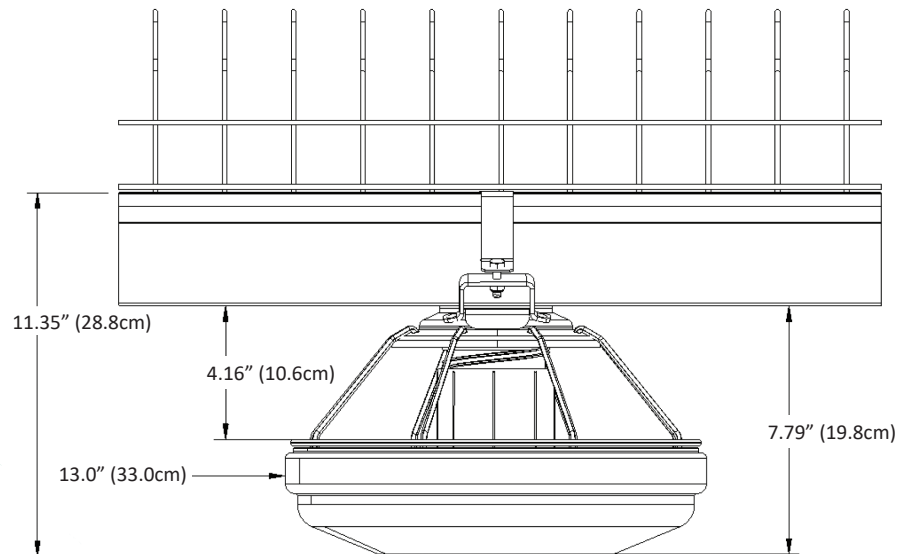


PXH HEN FEEDER 455180

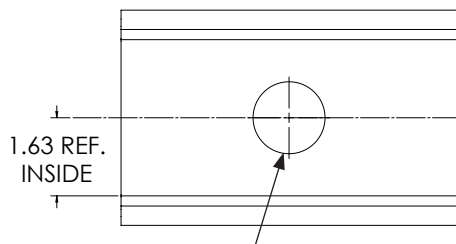
Quick Sheet Installation instructions



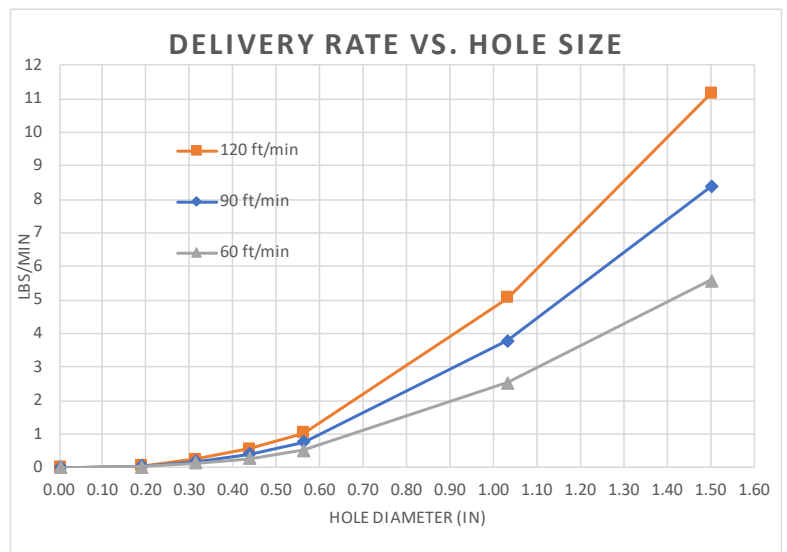
- Use hanging pan feeders to increase feeding space.
- The 8 spoke steel grill is strong and durable.
- Pans come standard with an integrated shutoff that keeps towers from filling with feed when closed.
- Adjustable collar allows users to vary feed capacity.
- Internal feed restrictor included to reduce tower capacity.



1. Drill hole in the center of trough.



Refer to chart for hole size.

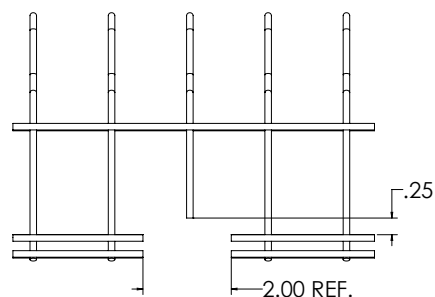
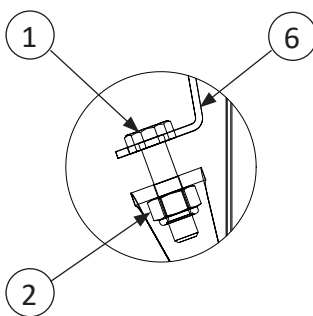
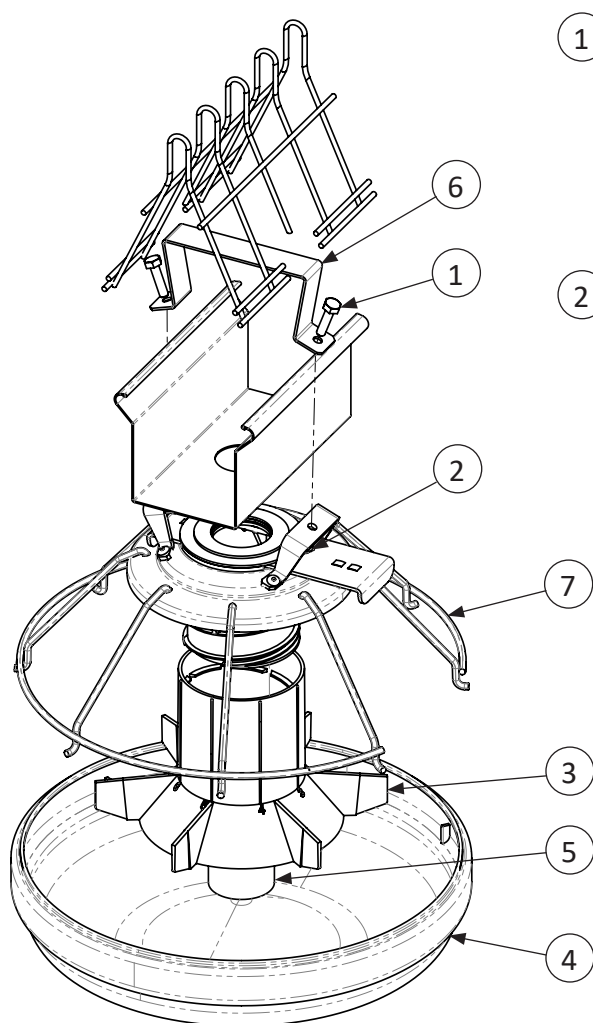


Quicksheet Installation Instructions - continued

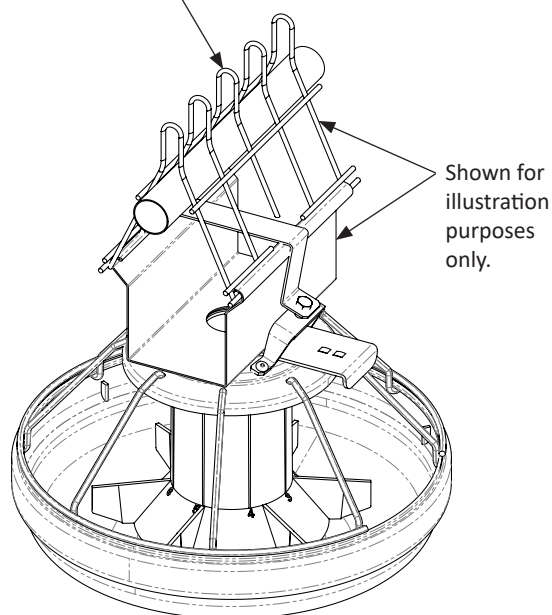
3. Assemble as shown in view below.

4. Tighten flange until parallel.

5. Cut opening for rooster hanger bracket.



When using with perch tube, add 8" section of Hi-V grill over pan.



KEY	PART #	QTY	DESCRIPTION
ASSEMBLY			
1	010619	2	1/4" X 5/8" HEX HEAD BOLT
2	012793	2	1/4-20 HEX LOCK NUT
3	450191	1	PARTITIONED FEED LEVEL TUBE
4	450406	1	HIGH CAPACITY PLASTIC PAN
5	450594	1	PAN FEED RESTRICTOR
6	455167	1	TROUGH FEEDER HANGER BRACKET
7	455184	1	PXH FLAT CHAIN FEEDER ASSEMBLY

North America:

Phone: 800.99VALCO; 800.998.2526

Fax: 419.678.2200

Email: sales@val-co.com

990236

TRC 11-4-2019

International:

Phone: (+1) 419.678.8731

Fax: (+1) 419.678.2200

Email: intl.sales@val-co.com