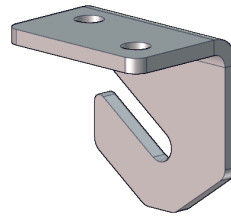




Quick Sheet Instructions



820021 Ceiling Bracket 200 LB Load Rating

The attachment of the #820021 Ceiling Bracket may be either *screwed* to a steel truss with self drilling screws, as shown in Figure 1, or *welded* to the steel truss, as shown in Figure 2. (Acceptable material thickness range for screw attachment is .100 - .400.)

Figure 1

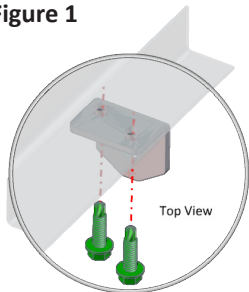
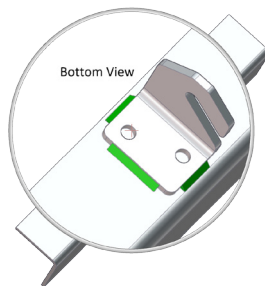


Figure 2



IMPORTANT: Consult a qualified Architect or Engineer in your area before installing any overhead system to verify that your building can handle the applied loads. Some loads may be lateral and require special bracing to prevent building damage. This system is not designed for lifting or supporting humans. Failure to follow load limitations or installation instructions can result in serious bodily injury or death.

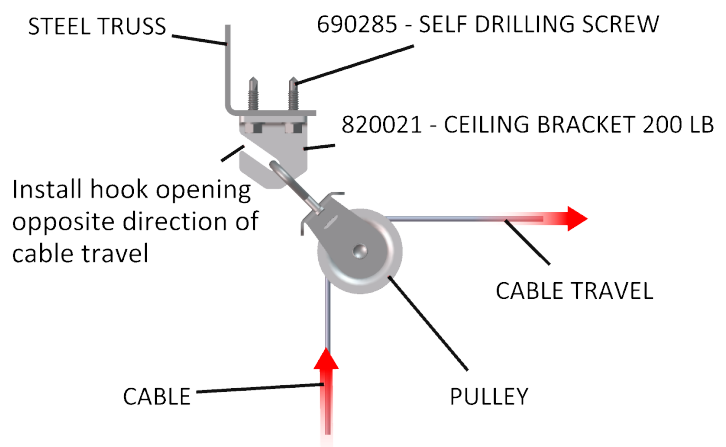
PART #	DESCRIPTION	QTY
820021	Ceiling Bracket	1-50
690285	1/4" - 14 X 1" HWH TEK Self-Drilling Screw	2-100

Self-Drilling Screws are available for order or may be purchased at your local hardware store.

Applications

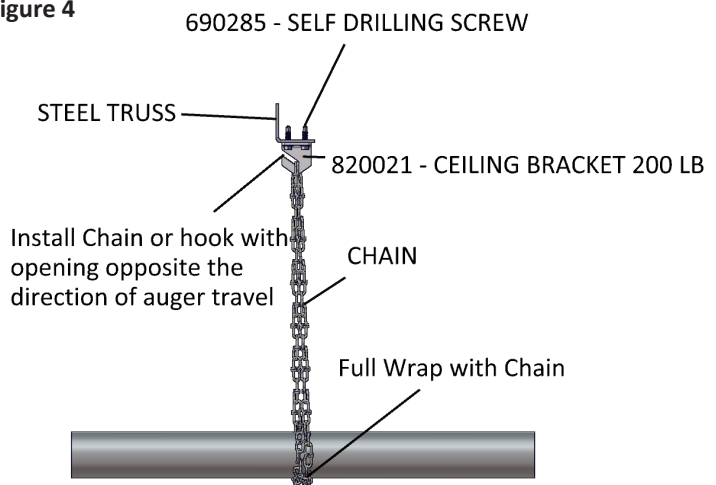
1. For hanging pulleys to steel truss using self-drilling screws.

Figure 3



2. For vertical loads to steel truss using self-drilling screws.

Figure 4



North America:

Phone: 800.99VALCO (800.998.2526)

Fax: 419.678.2200

Email: sales@val-co.com

U:\MANUALS\990000\990045

JDS 6/14/2011

International:

Phone: (+1) 419.678.8731

Fax: (+1) 419.678.2200

Email: intl.sales@val-co.com