

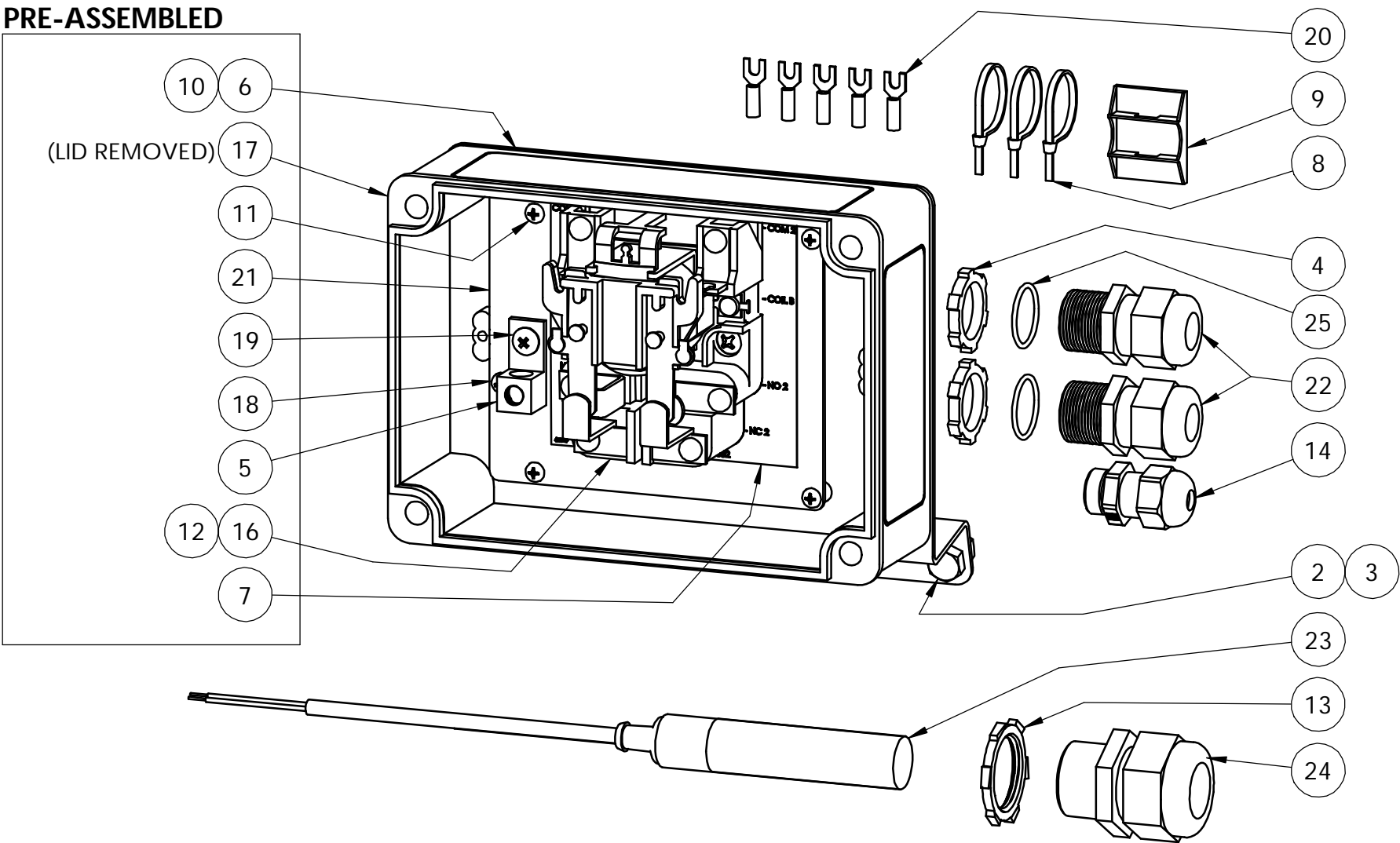
BOOT SAFETY PROXIMITY SWITCH INSTRUCTIONS


REV	ECN#	DESCRIPTION	DATE	BY
-	13177	INSTRUCTION SHEET CREATION	9/22/2015	LRA

THE PURPOSE OF THE BOOT SAFETY SWITCH IS TO ENSURE THE FEED LINES DO NOT RUN EMPTY. IF THE LEVEL OF FEED IN THE HOPPER DROPS BELOW THE PROXIMITY SWITCH, THE POWER WILL BE CUT TO THE FLOOR FEED LINE MOTORS.

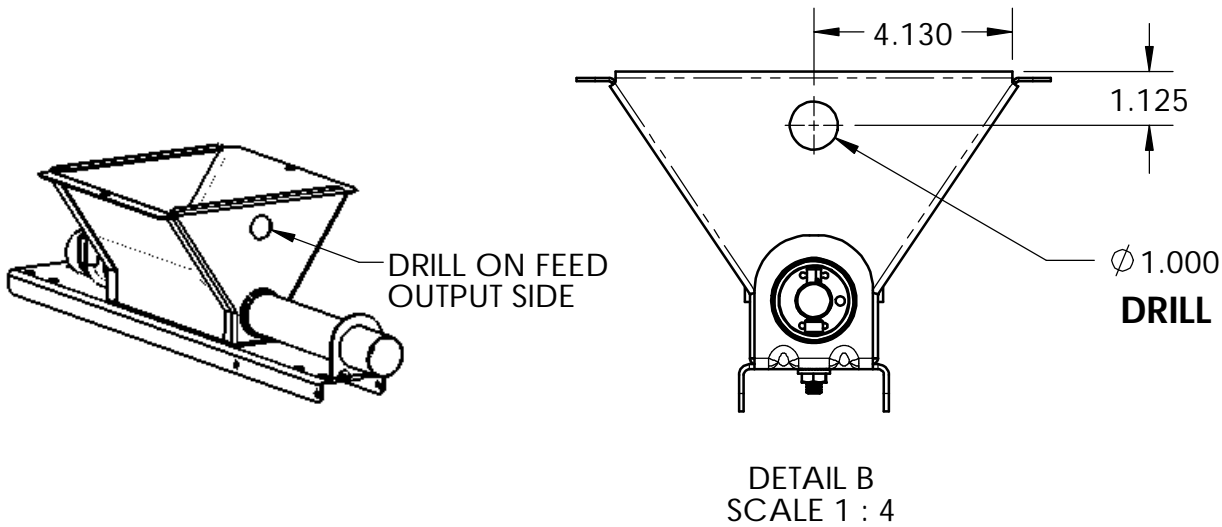
PARTS LIST			
ITEM #	PART #	DESCRIPTION	QTY
1	010764	BAG, PLASTIC 4" X 8"	1
2	012615	1/4-20" X 1/2" SS HEX BOLT	2
3	012793	NUT, HEX LOCK 1/4-20 ZP	2
4	420473	1/2" CONDUIT NUT	2
5	450484	GROUND BLOCK	1
6	455798	BRACKET, BOOT SAFETY MOUNT	1
7	455799	DECAL, RELAY 730332 LABEL	1
8	610607	TY-RAP, SELF-LOCKING, T&B #TY-23M	3
9	690190	HOLDER, TY-RAP #1A870 GRAINGER	1
10	690354	SCREW, #8-18 X 1/2 PPHMS ZP	4
11	690364	SCREW, #6-19 X 3/8 PPHMS ZP	4
12	690368	SCREW, 10-32X5/8 PPH TRS ZP	2
13	690369	3/4" CONDUIT NUT	1
14	713419	CORD GROMMET	1
15	730047	HIGH VOLTAGE WARNING LABEL	1
16	730332	RELAY, DPDT, 240VAC, 40A,	1
17	730452	ENCLOSURE 5 X 7 X 3	1
18	730514	SCREW, 6-32 X 1/4 PPH TRS ZP	1
19	730516	SCREW, 10-32 X 1/4 PPH TRS ZP	1
20	730521	TERMINAL, SPADE, 16-14AWG, #6	5
21	730541	MOUNTING PLATE, CONTROL BOX	1
22	750030	STRAIGHT-THRU GROMMET	2
23	750436-BV	SENSOR, PROXIMITY, DOL 25	1
24	775102	3/4" STRAIGHT CONNECTOR	1
25	HW-71-204	O-RING, 11/16 ID, 13/16 OD	2

PRE-ASSEMBLED

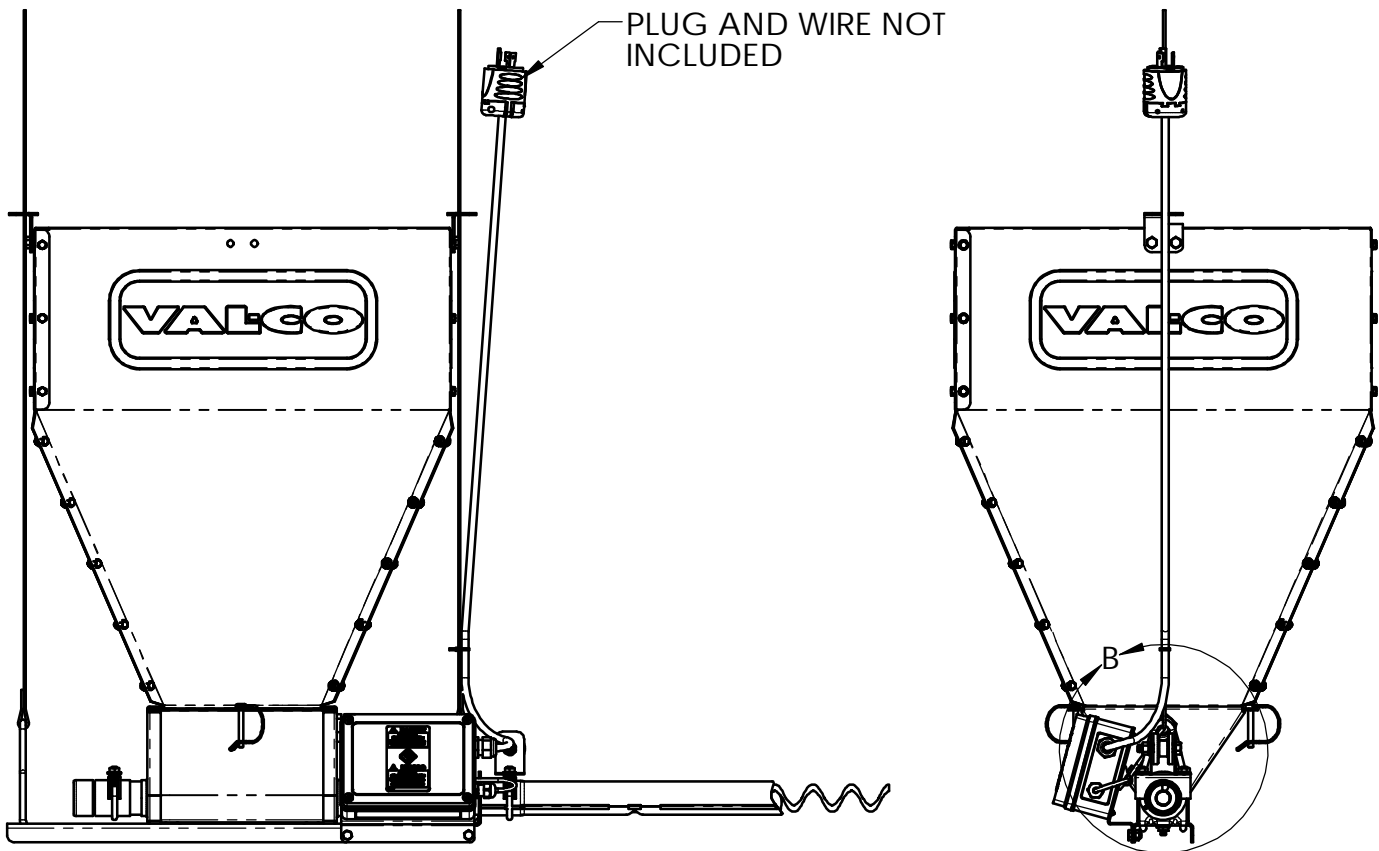
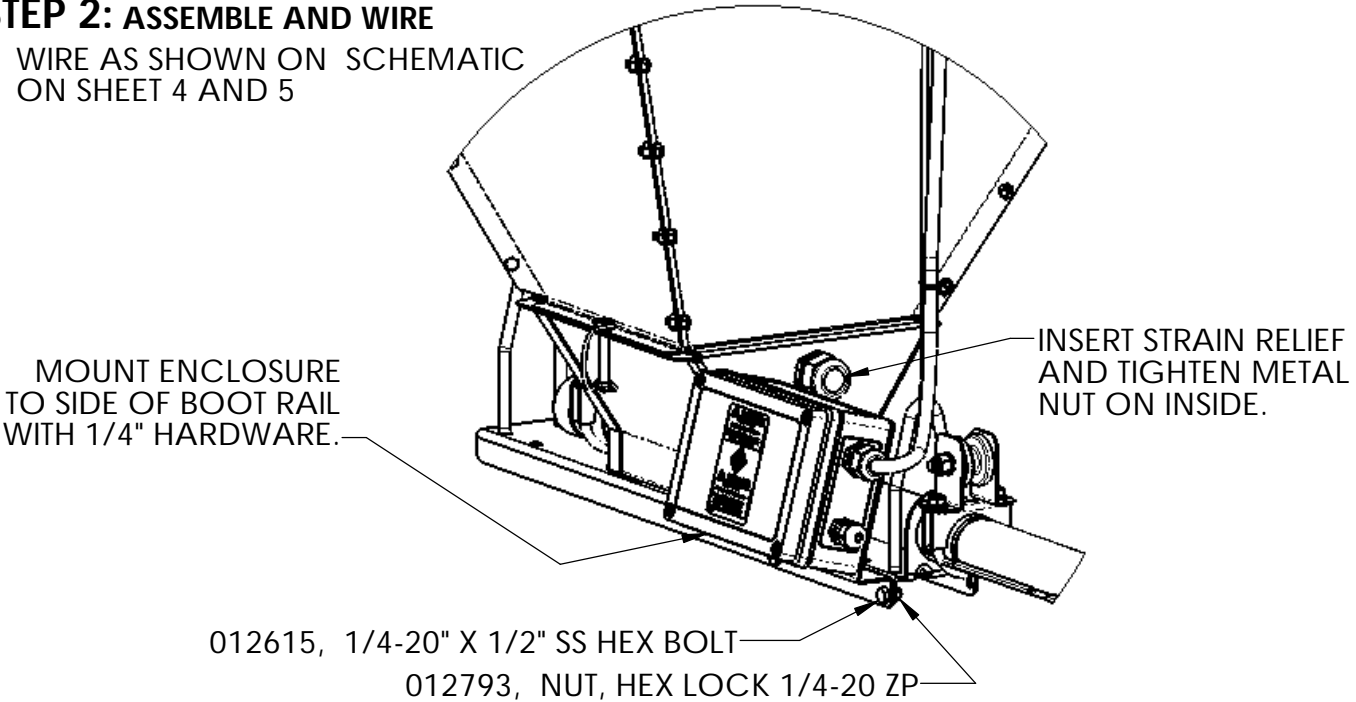


UNSPECIFIED TOLERANCES 2 PLACE ± .060 3 PLACE ± .030 4 PLACE ± .010 HOLE DIA. ± .010 ANGULAR ± 1°	DIMENSIONS ARE IN INCHES DIMENSIONS IN () ARE MILLIMETERS UNLESS OTHERWISE SPECIFIED. DO NOT SCALE		 VALCO COMPANIES, INC. PO BOX 8 NEW HOLLAND, PA 17557			
	DATE	9/21/15				
	DRAWN	LRA	DESCRIPTION 1 INSTR, BOOT SAFETY PROXIMITY			
	CHECK	-	DESCRIPTION 2 -			
	WEIGHT	NA	SHEET 1 OF 5			990140
SCALE	NA					
This drawing and any print thereof is the property of VALCO COMPANIES INC., and is subject to return on request by this company. The information shown is confidential and the recipient by accepting this drawing agrees not to use any information contained thereon in any manner which will be detrimental to VALCO COMPANIES INC.						

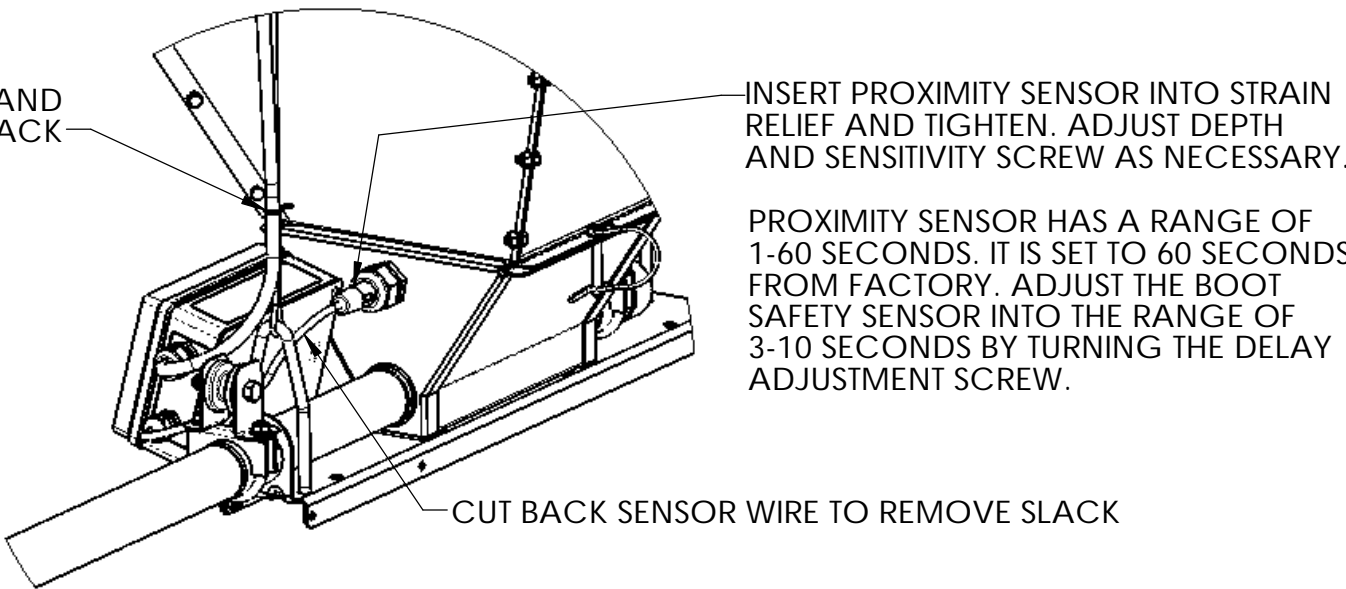
STEP 1: DRILL PROXIMITY SENSOR HOLE AS SHOWN BEFORE INSTALLATION.
SEE SHEET 3 FOR TWIN BOOT DRILL INFORMATION.



STEP 2: ASSEMBLE AND WIRE
WIRE AS SHOWN ON SCHEMATIC
ON SHEET 4 AND 5



SECURE WIRES AND
REMOVE ALL SLACK



UNSPECIFIED TOLERANCES
2 PLACE ± .060
3 PLACE ± .030
4 PLACE ± .010
HOLE DIA. ± .010
ANGULAR ± 1°

DIMENSIONS ARE IN INCHES
DIMENSIONS IN ()
ARE MILLIMETERS
UNLESS OTHERWISE
SPECIFIED.
DO NOT SCALE



VALCO COMPANIES, INC.

PO BOX 8
NEW HOLLAND, PA 17557

This drawing and any print thereof is the property of VALCO COMPANIES INC. and is subject to return on request by this company. The information shown is confidential and the recipient by accepting this drawing agrees not to use any information contained thereon in any manner which will be detrimental to VALCO COMPANIES INC.

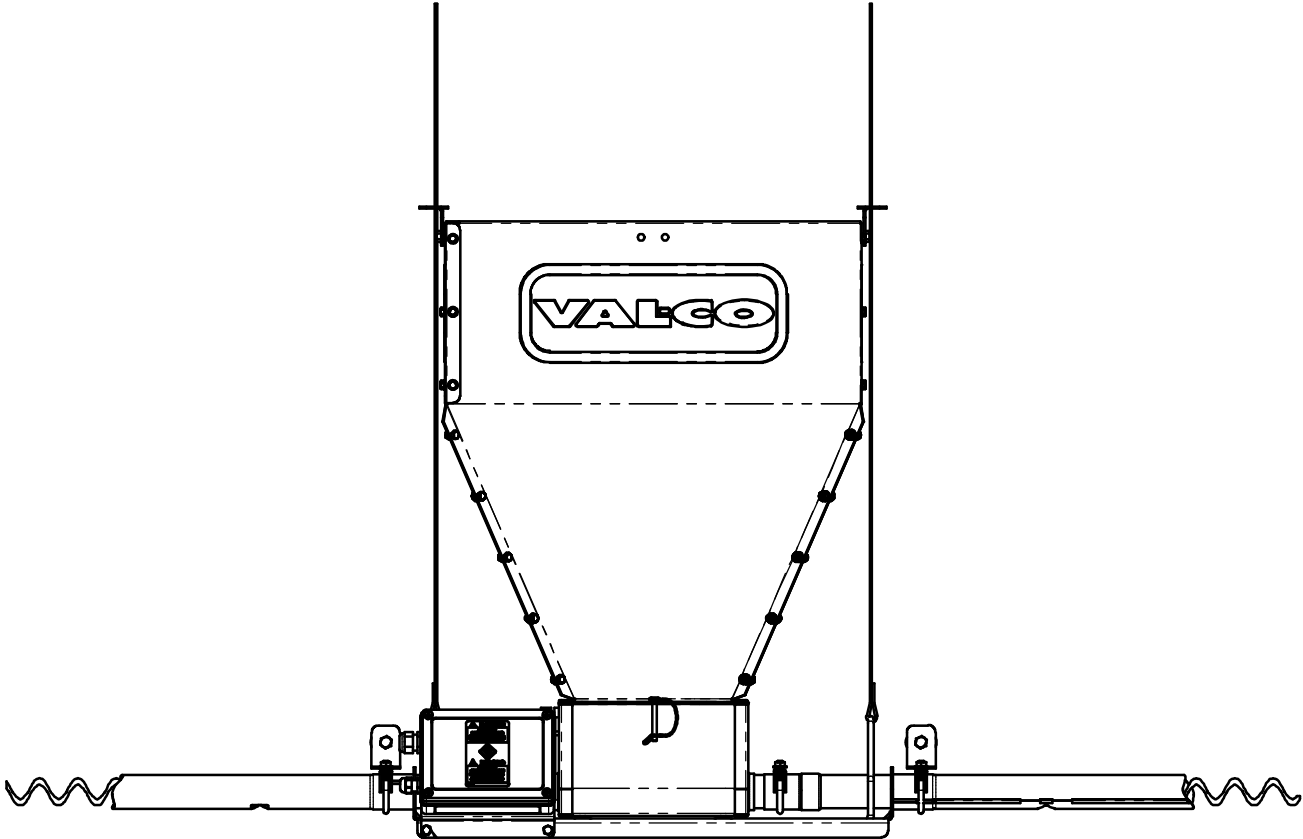
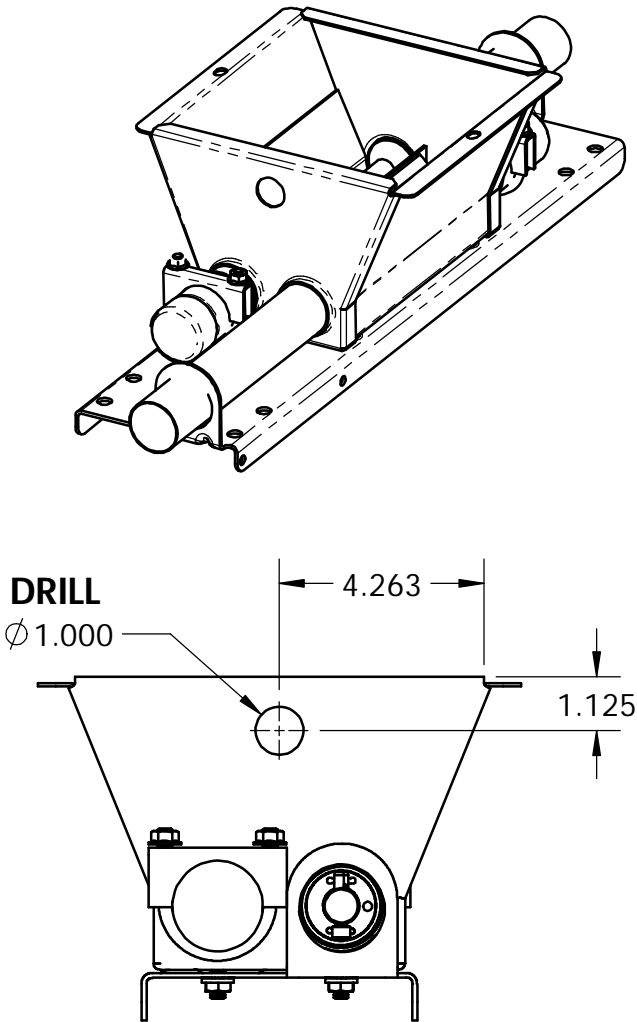
DATE 9/21/15
DRAWN LRA
CHECK -
WEIGHT NA
SCALE NA

DESCRIPTION 1 INSTR, BOOT SAFETY PROXIMITY
DESCRIPTION 2 -

SHEET 2 OF 5 990140 REV. -

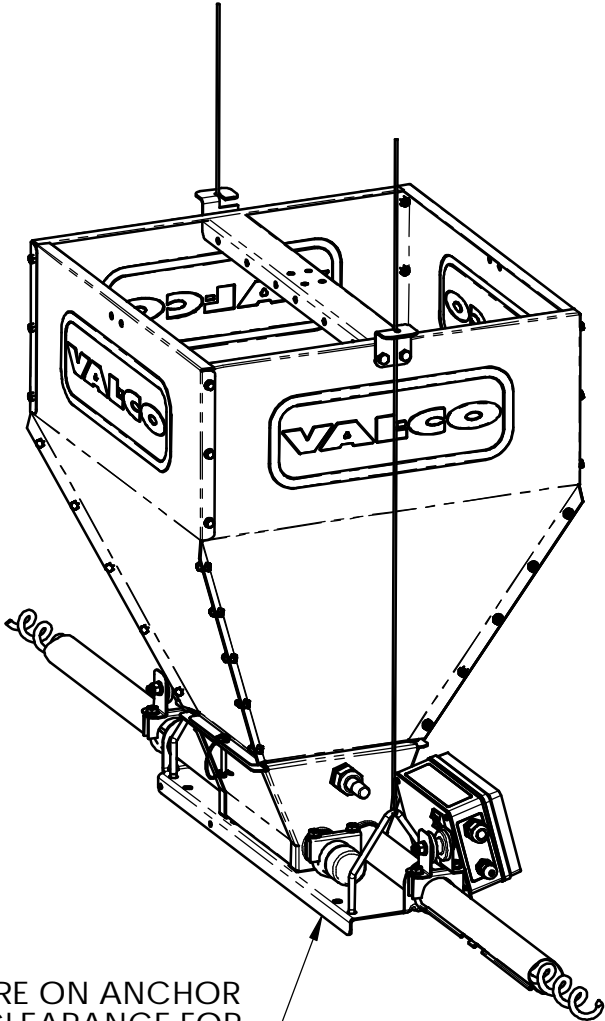
REV	ECN#	DESCRIPTION	DATE	BY
-	See Sheet1	See Sheet1	-	See Sheet1


TWIN BOOT: FOLLOW THE DRILL PATTERN SHOWN BELOW
 -DRILL PROXIMITY SENSOR HOLE BEFORE INSTALLATION.
 -FOLLOW THE INSTRUCTIONS ON SHEET 2 FOR ALL OTHER FEATURES OF INSTALL



MOUNT ENCLOSURE TO SIDE OF BOOT RAIL WITH 1/4" HARDWARE. USE THE FACTORY MOUNTING HOLES IN RAIL.

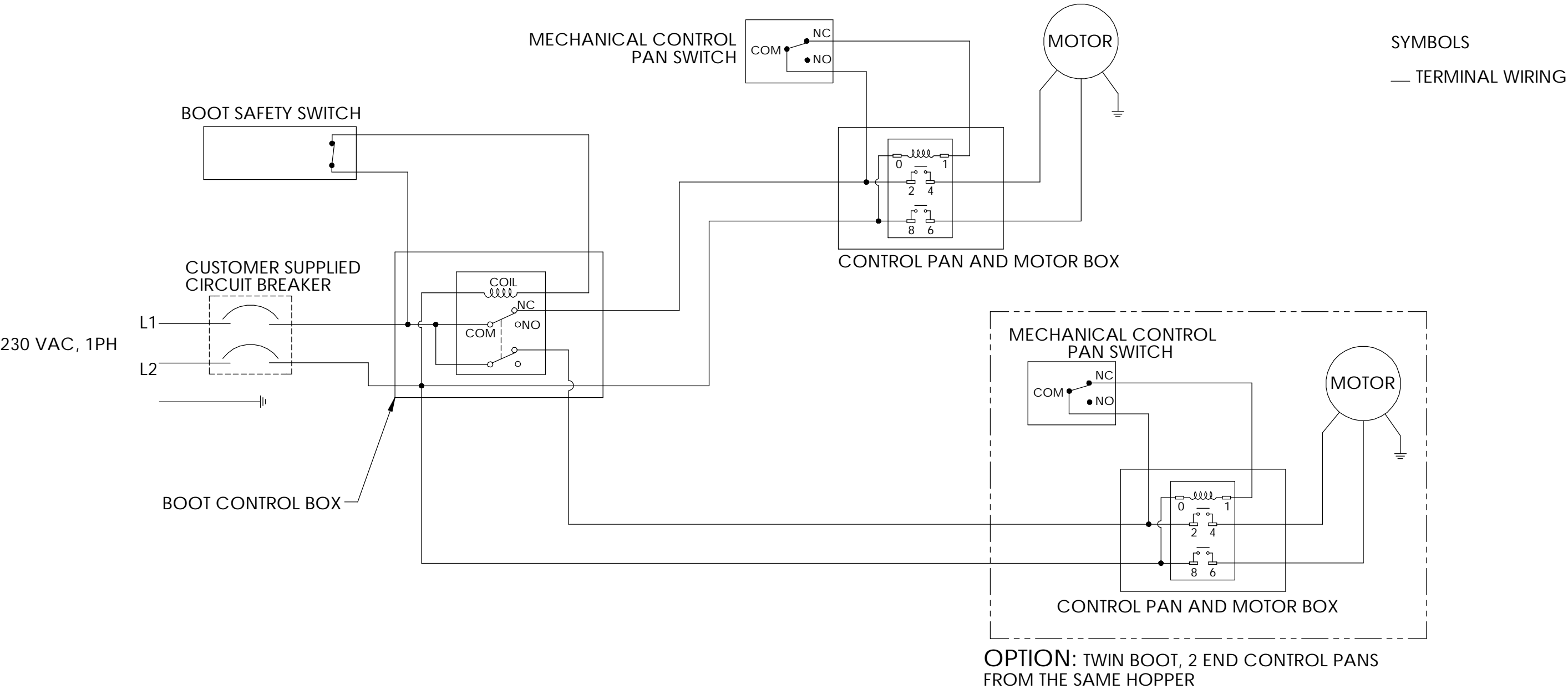
DO NOT INSTALL ENCLOSURE ON ANCHOR BEARING SIDE TO LEAVE CLEARANCE FOR AUGER INSTALLATION PURPOSES.




UNSPECIFIED TOLERANCES 2 PLACE ± .060 3 PLACE ± .030 4 PLACE ± .010 HOLE DIA. ± .010 ANGULAR ± 1°	DIMENSIONS ARE IN INCHES DIMENSIONS IN () ARE MILLIMETERS UNLESS OTHERWISE SPECIFIED. DO NOT SCALE		 VALCO COMPANIES, INC. PO BOX 8 NEW HOLLAND, PA 17557		
This drawing and any print thereof is the property of VALCO COMPANIES INC., and is subject to return on request by this company. The information shown is confidential and the recipient by accepting this drawing agrees not to use any information contained thereon in any manner which will be detrimental to VALCO COMPANIES INC.	DATE	9/21/15	DESCRIPTION 1		
	DRAWN	LRA	INSTR, BOOT SAFETY PROXIMITY		
	CHECK	-	DESCRIPTION 2		
	WEIGHT	NA	-		
	SCALE	NA	-		
SHEET 3 OF 5			990140		REV. -

SCHEMATIC:
-PROXIMITY BOOT SAFETY SWITCH USED WITH MECHANICAL SWITCH CONTROL PANS

REV	ECN#	DESCRIPTION	DATE	BY
-	See Sheet1	See Sheet1	-	See Sheet1



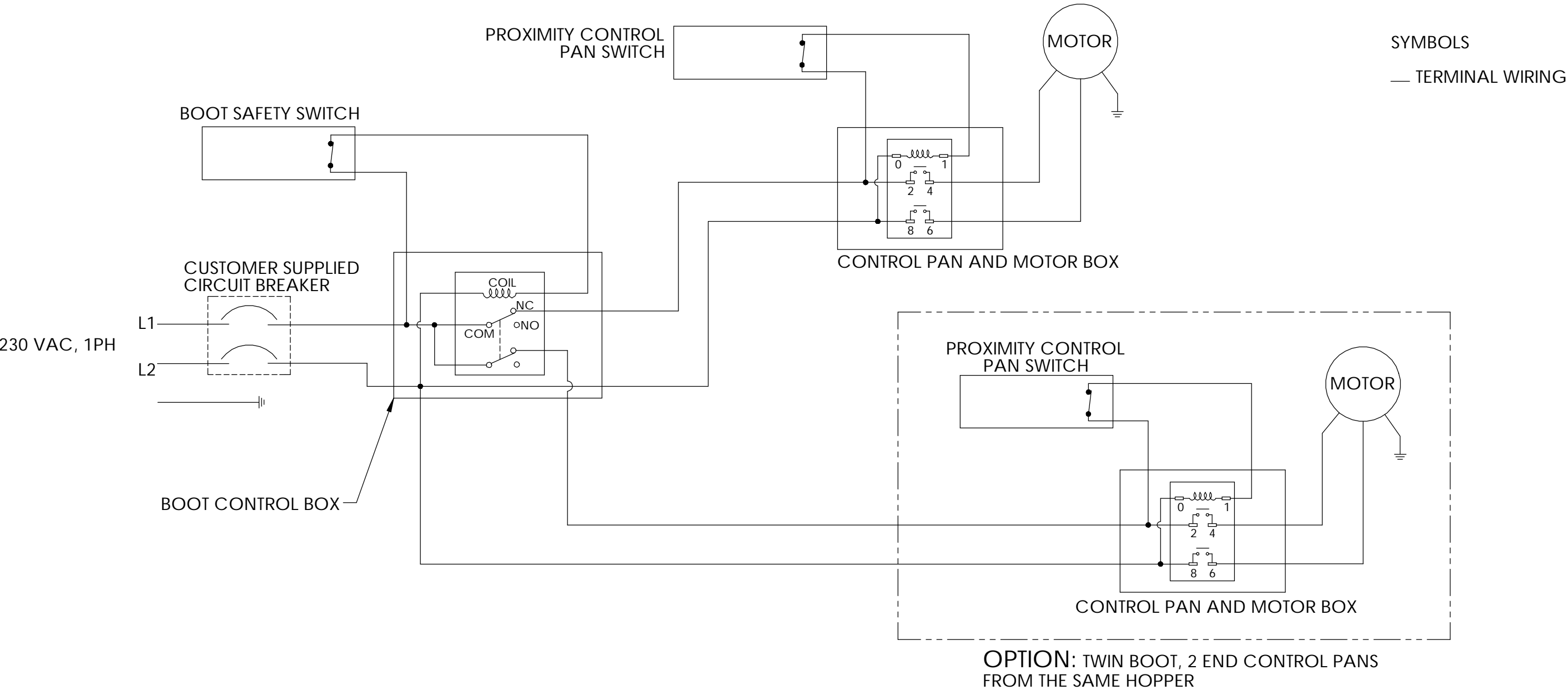
- REFER TO MANUAL FOR WIRE DETAILS
- ALL ELECTRICAL WORK MUST COMPLY WITH LOCAL AND NATIONAL ELECTRIC CODES
- ALL ELECTRICAL WORK MUST BE DONE BY A CERTIFIED ELECTRICIAN

UNSPECIFIED TOLERANCES 2 PLACE ± .060 3 PLACE ± .030 4 PLACE ± .010 HOLE DIA. ± .010 ANGULAR ± 1°	DIMENSIONS ARE IN INCHES DIMENSIONS IN () ARE MILLIMETERS UNLESS OTHERWISE SPECIFIED. DO NOT SCALE	 VALCO COMPANIES, INC. PO BOX 8 NEW HOLLAND, PA 17557		
This drawing and any print thereof is the property of VALCO COMPANIES INC. and is subject to return on request by this company. The information shown is confidential and the recipient by accepting this drawing agrees not to use any information contained thereon in any manner which will be detrimental to VALCO COMPANIES INC.	DATE	9/21/15	DESCRIPTION 1	
	DRAWN	LRA	INSTR, BOOT SAFETY PROXIMITY	
	CHECK	-	DESCRIPTION 2	
	WEIGHT	NA	-	
	SCALE	NA	-	
		SHEET 4 OF 5	990140	REV. -


SCHEMATIC:

-PROXIMITY BOOT SAFETY SWITCH USED WITH PROXIMITY SWITCH CONTROL PANS

REV	ECN#	DESCRIPTION	DATE	BY
-	See Sheet1	See Sheet1	-	See Sheet1



- REFER TO MANUAL FOR WIRE DETAILS
- ALL ELECTRICAL WORK MUST COMPLY WITH LOCAL AND NATIONAL ELECTRIC CODES
- ALL ELECTRICAL WORK MUST BE DONE BY A CERTIFIED ELECTRICIAN

UNSPECIFIED TOLERANCES 2 PLACE ± .060 3 PLACE ± .030 4 PLACE ± .010 HOLE DIA. ± .010 ANGULAR ± 1°	DIMENSIONS ARE IN INCHES DIMENSIONS IN () ARE MILLIMETERS UNLESS OTHERWISE SPECIFIED. DO NOT SCALE		 VALCO COMPANIES, INC. PO BOX 8 NEW HOLLAND, PA 17557	
	DATE 9/21/15	DESCRIPTION 1		
	DRAWN LRA	INSTR, BOOT SAFETY PROXIMITY		
	CHECK -	DESCRIPTION 2 -		
This drawing and any print thereof is the property of VALCO COMPANIES INC. and is subject to return on request by this company. The information shown is confidential and the recipient by accepting this drawing agrees not to use any information contained thereon in any manner which will be detrimental to VALCO COMPANIES INC.	WEIGHT NA	SHEET 5 OF 5	990140	REV. -
	SCALE NA			