

Quick Sheet Instructions

Boot Safety Switch, Adjustable

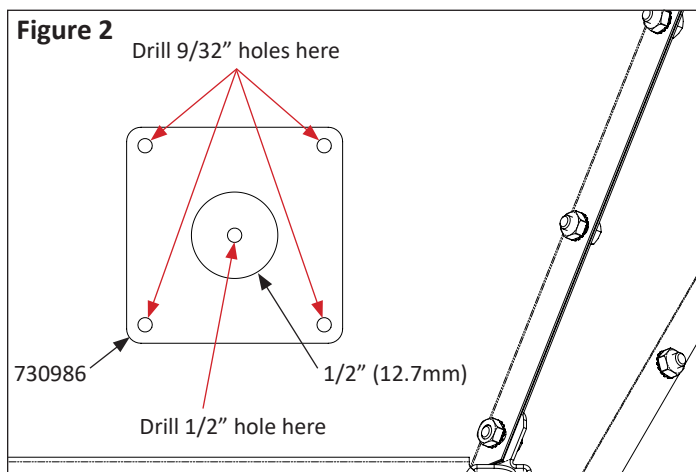
730965

The Boot Safety Switch can be used in a variety of feeding applications to prevent the feeding system from running without feed (example shown: feed hopper installation).

Installation Instructions

1. Use the safety switch template (730986) to mark the hole locations onto the panel that you want the Boot Safety Switch (730965) mounted to. Drill (4) 9/32" (7.14 mm) diameter holes in the corners of the template and (1) center hole at 1/2" (12.7 mm) diameter, as shown in Figure 2.

Figure 2



2. Assemble the diaphragm retainer (730985) and diaphragm (730967), through the hopper panel, seal (730982), and enclosure, by inserting (4) #10-14 x 3/4" screws (690361) from the inside of the hopper, as shown in Figure 3. Leave the screws slightly loose until the next step.

3. Push diaphragm into the hopper before tightening the (4) mounting screws from the inside of the hopper, as shown in Figure 4. Otherwise the diaphragm will be too tight to allow for proper movement.

Figure 1

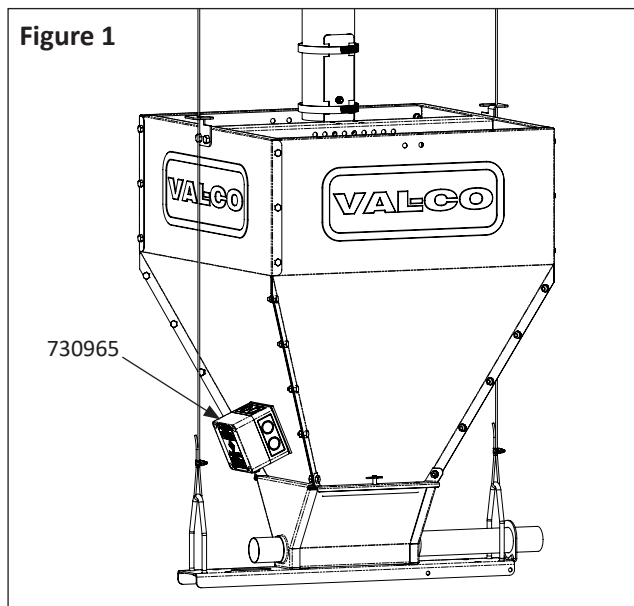


Figure 3

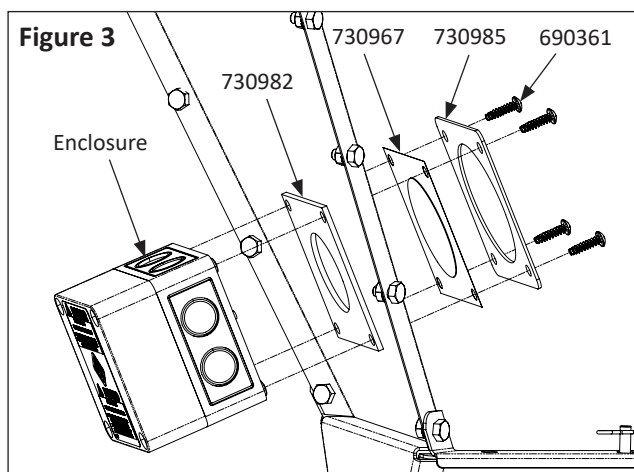
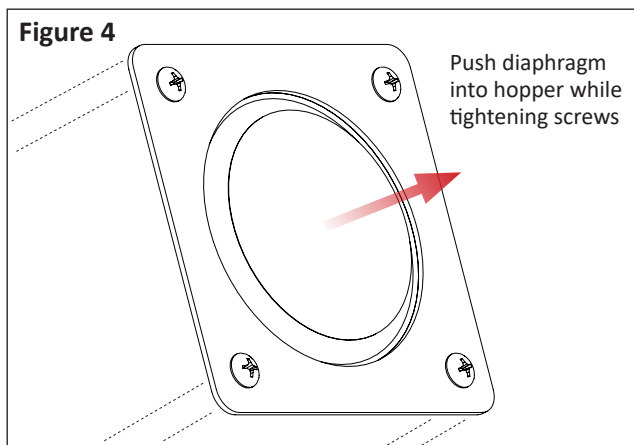
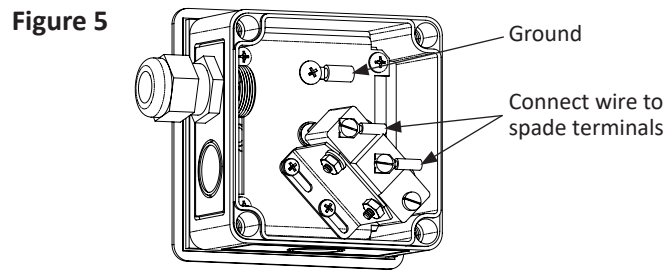


Figure 4

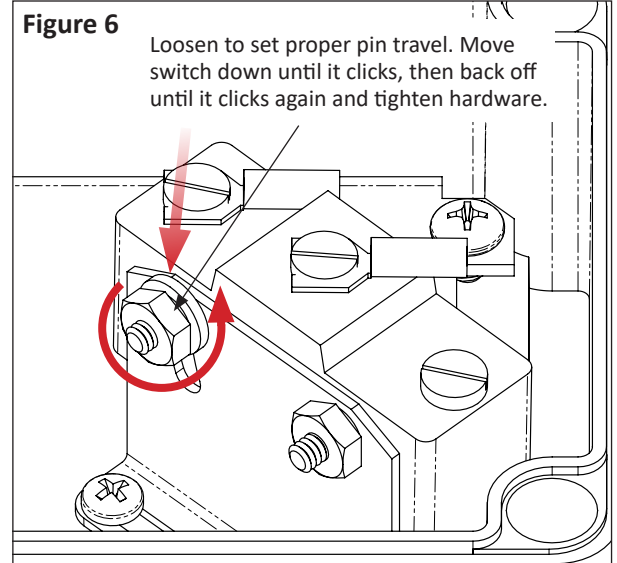


Switch Adjustment

4. Connect the wire to the switch at the spade terminals, as shown in Figure 5.



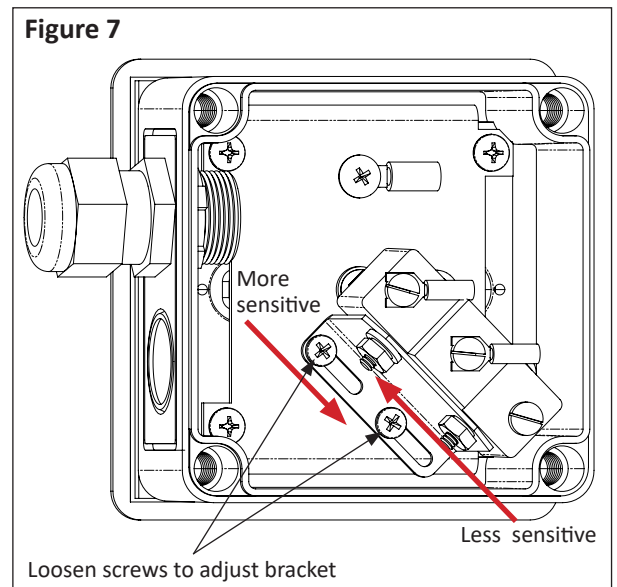
5. Set the proper pin travel.
 - a. Loosen the bolts securing the switch to the bracket.
 - b. Rotate the switch towards the pin until the switch activates, as shown in Figure 6.
 - c. Back the switch off from the pin until it deactivates.
 - d. Tighten the bolt.
6. Attach enclosure cover and connect electrical power to switch.



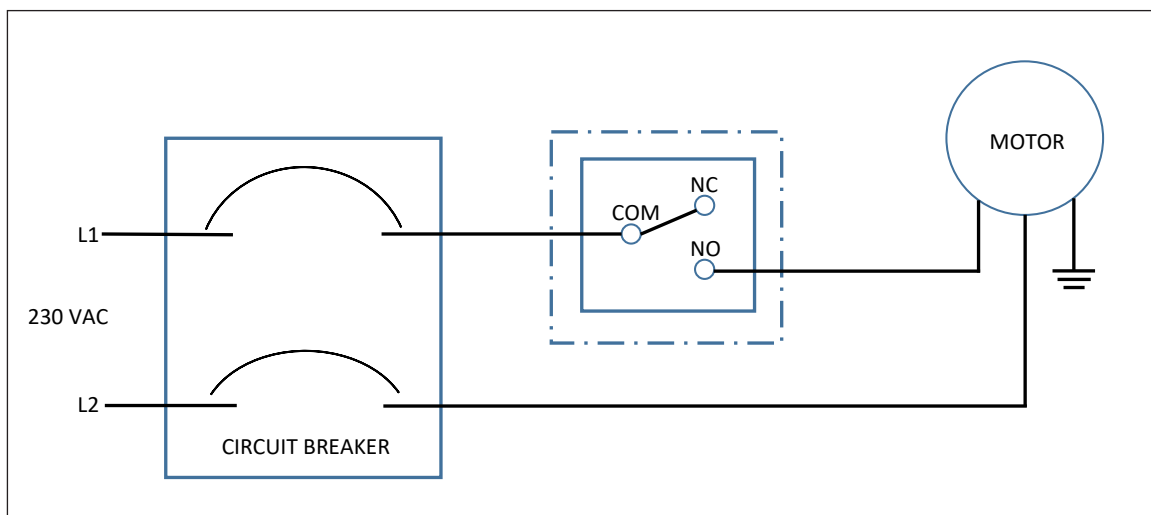
Troubleshooting

If the switch does not activate, the sensitivity can be easily adjusted.

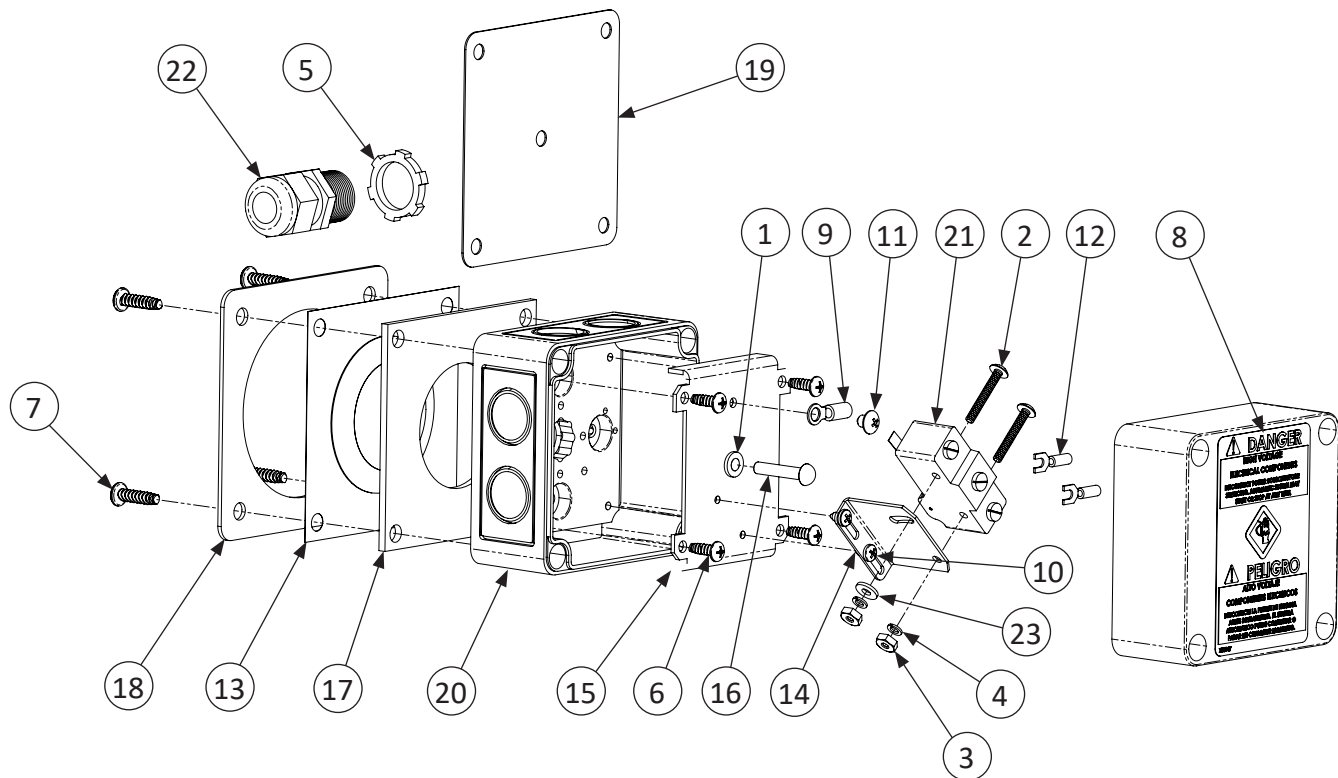
Adjust the sensitivity required to activate the switch by loosening (2) screws and sliding the switch bracket, as shown in Figure 7.



Wiring Diagram



Boot Safety Switch - Exploded Drawing and Parts List



KEY	PART #	QTY	DESCRIPTION
730965			
1	011138	1	0.2" ID X 0.26" OD FLANGED SPACER
2	012570	2	#6-32 X 1" ROUND HEAD BOLT
3	012731	2	#6-32 MACHINE NUT
4	012732	2	#6 LOCK WASHER
5	420473	1	1/2" CONDUIT NUT
6	690360	4	#8-16 X 1/2" PAN HEAD PLASTIC SCREW
7	690361	4	#10-14 X 3/4" PAN HEAD PLASTIC SCREW
8	730047	1	HIGH VOLTAGE WARNING LABEL
9	730058	1	#16-14 RING TERMINAL
10	730514	2	#6-32 X 1/4" PAN HEAD SCREW
11	730516	1	#10-32 X 1/4" PAN HEAD SCREW
12	730521	2	#6 SPADE TERMINAL, 16-14AWG
13	730967	1	DIAPHRAGM ASSEMBLY
14	730976	1	BRACKET
15	730977	1	BASE PLATE
16	730978	1	3/16" OD X 1.0" SOLID SS RIVET
17	730982	1	NEOPRENE SEAL
18	730985	1	DIAPHRAGM RETAINER
19	730986	1	TEMPLATE
20	730988	1	ELECTRIC BOX
21	730989	1	MICRO SWITCH, SPDT 20A 250VAC
22	750030	1	STRAIGHT-THRU GROMMET
23	PMWASH6F	1	#6 FLAT WASHER

North America:

Phone: 800.99VALCO (800.998.2526)

Fax: 419.678.2200

Email: sales@val-co.com

990115 [A]

© Valco Industries, Inc. 2023

International:

Phone: (+1) 419.678.8731

Fax: (+1) 419.678.2200

Email: intl.sales@val-co.com