



**BASIC CHICK FEEDER  
(USED IN ALL MODELS)**



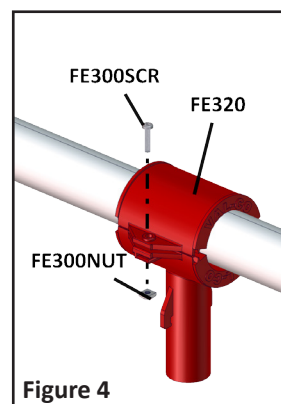
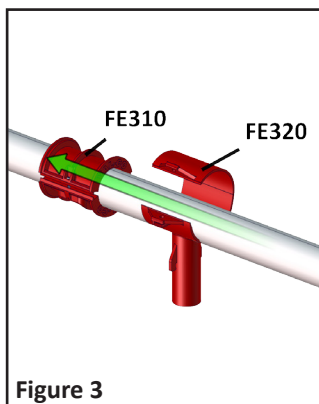
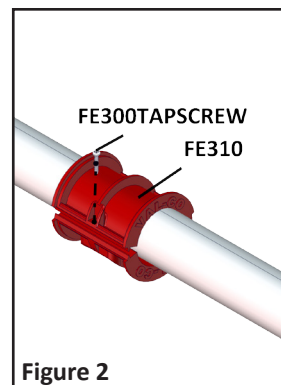
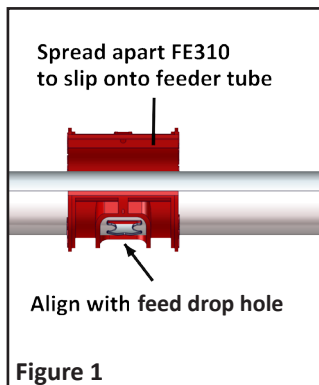
**FE300  
WITH  
EXTENSION AND CAP**



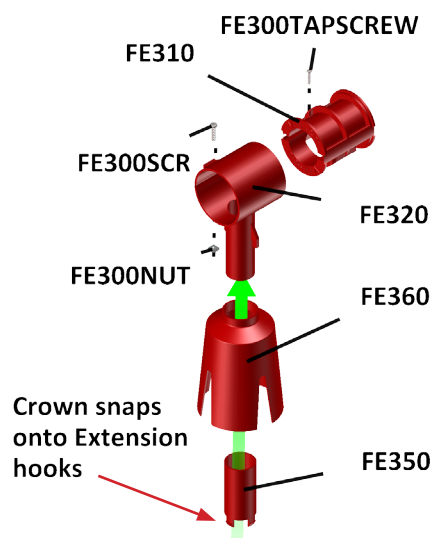
**FE300CR  
WITH HOOKED  
EXTENDER AND CROWN**

## Installation

1. Spread the FE310 spool and slip onto the feed tube, as shown in Figure 1. **(Be sure the hole in the spool aligns with the feed drop hole in the feed tube).**
2. Then insert the FE300TAPSCREW into the hole along the side of the spool provided and secure, as in Figure 2.
3. Slide the FE320 drop onto the FE310 spool, slightly spreading the drop over the center, between the flanges of the spool, as shown in Figure 3.
4. Secure with FE300SCR and FE300NUT, as in Figure 4.
5. Slide the **Optional** extender FE 330 or the **Optional** hooked extender FE350 and crown spreader FE360 onto the end of the FE320 drop until it snaps into place.



PART #	DESCRIPTION	QTY
<b>INTERCHANGEABLE PARTS</b>		
FE310	SPOOL FOR BEST START CHICK FEEDER	1
FE320	DROP FOR BEST START CHICK FEEDER	1
FE300NUT	#8-32 SQUARE NUT, 11/32"WD X 1/8" THR SS	1
FE300SCR	#8-32 x 3/4 " PHILLIPS ROUND 188 SS	1
FE300TAPSCREW	NO.4 X 3/4"LONG PAN HD SHT METAL SCR SS	1
<b>FE300 - BEST START CHICK FEEDER</b>		
FE330	EXTENDER FOR BEST START CHICK FEEDER	1
FE340	CAP FOR EXT. FOR BEST START CHICK FEEDER	1
<b>FE300CR - BEST START CHICK FEEDER W/CROWN SLEEVE</b>		
FE350	HOOKEED EXTENDER FOR BEST START FEEDER (USE WITH FE360)	1
FE360	CROWN SPREADER FOR BEST START FEEDER (USE WITH FE350)	1



## North America:

Phone: 800.99VALCO (800.998.2526)

Fax: 419.678.2200

Email: [sales@val-co.com](mailto:sales@val-co.com)

990042

TRC 4-4-2018

## International:

Phone: (+1) 419.678.8731

Fax: (+1) 419.678.2200

Email: [intl.sales@val-co.com](mailto:intl.sales@val-co.com)

# Quick Sheet Instructions

## Best Start Chick Feeder