



INSTALLATION CHECKLIST SPINKS BIN SCALES

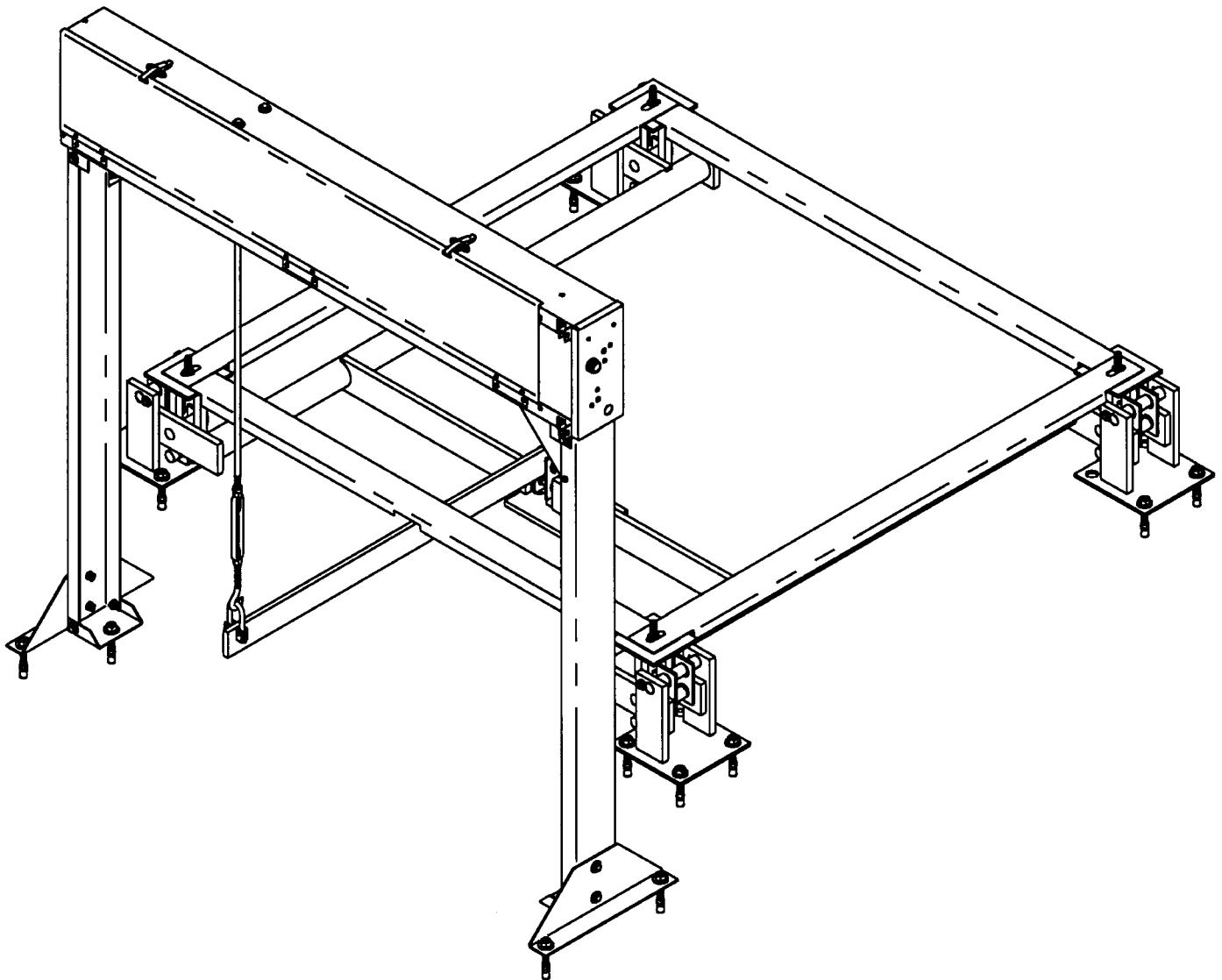
FOR SCALE MODELS:

415442 – 5,000 lb.

415473 – 10,000 lb.

415520 – 2,268 kg.

415498 – 4,500 kg.



BIN SCALE

SCALE INSTALLATION CHECKLIST

- ☐ 1) After the scale and augers are installed, make a final inspection. Make sure the augers have 1/2" clearance going through the wall of the house. See Fig. 1.

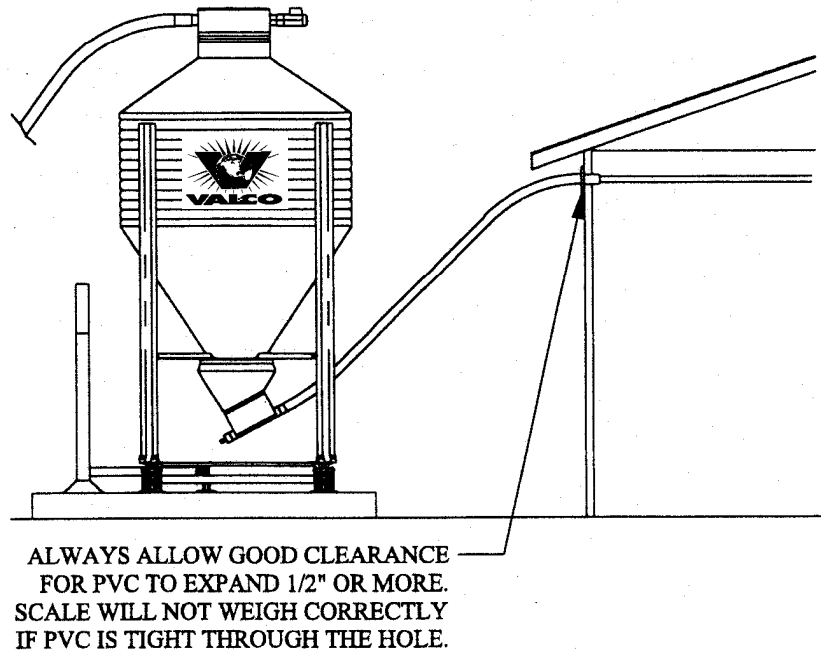


FIG. 1

- ☐ 2) Check to make sure the scale floats, if not see Fig's. 2A-E, make adjustment as necessary.

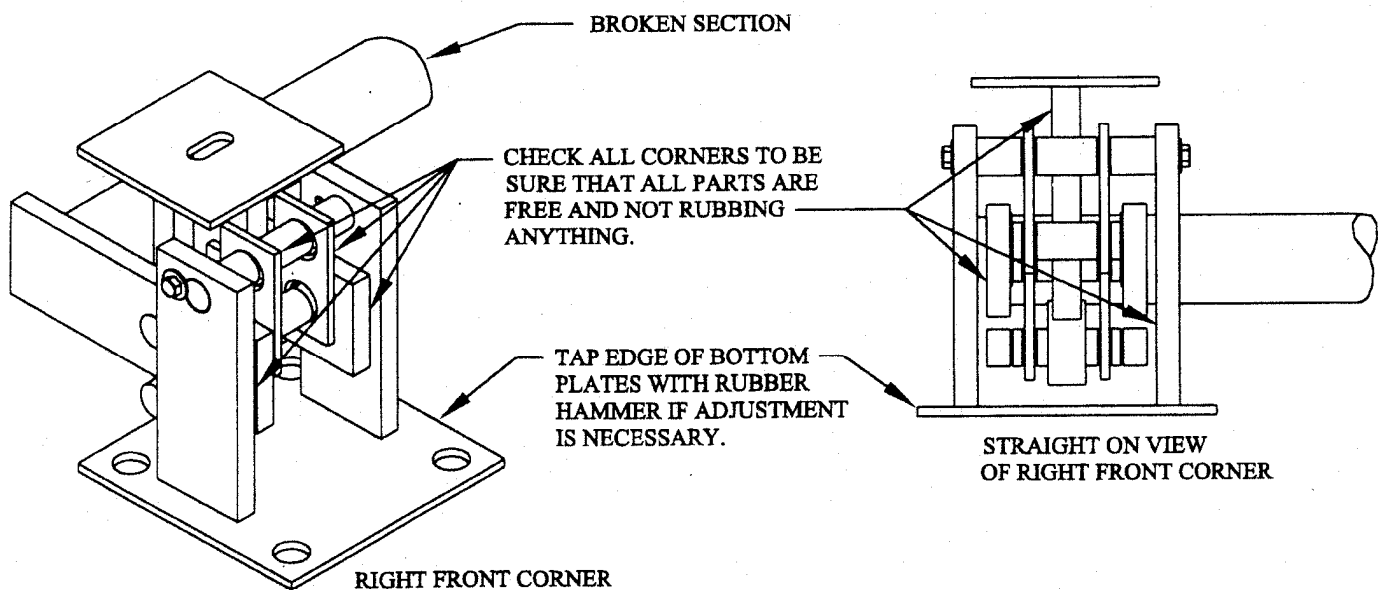


FIG. 2A

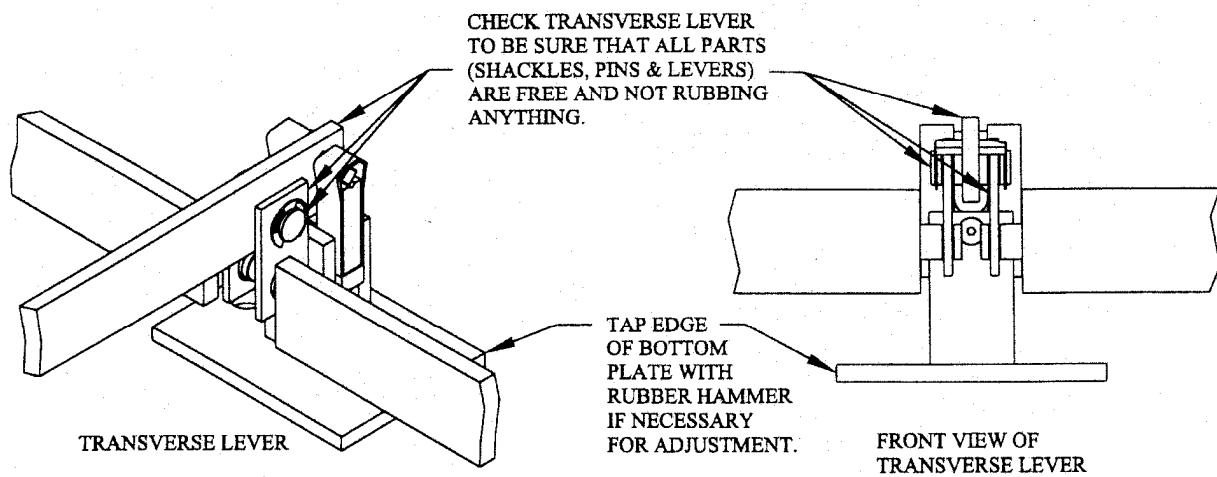


FIG. 2B

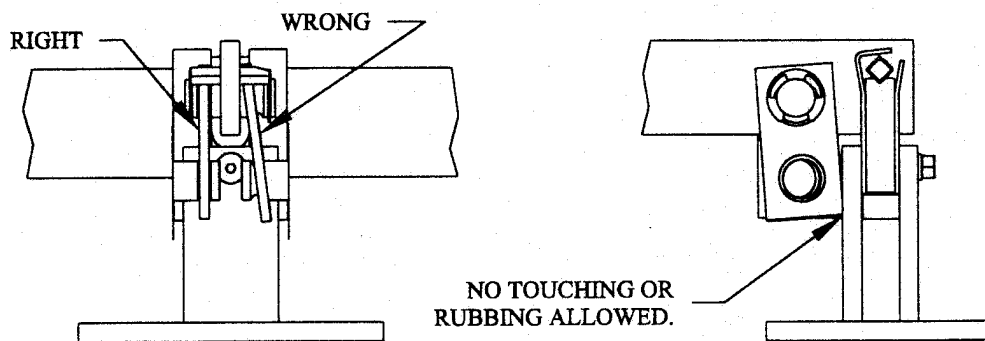


FIG. 2C

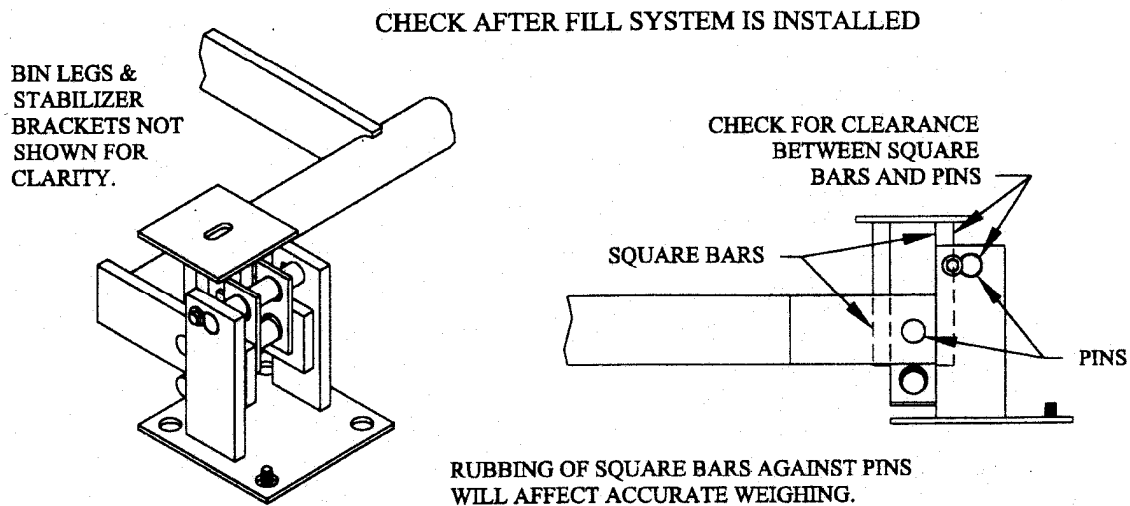
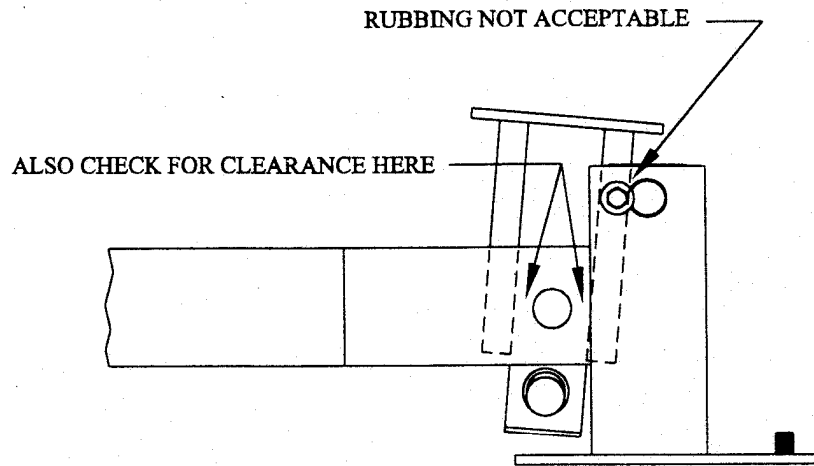


FIG. 2D

WRONG!!



RUBBING OF SQUARE BARS AGAINST PINS
WILL AFFECT ACCURATE WEIGHING.

FIG. 2E

- ☐ 3) Make sure that the steelyard rod is plumb in both directions. Left to right and front to back. See Fig's. 3A & 3B.

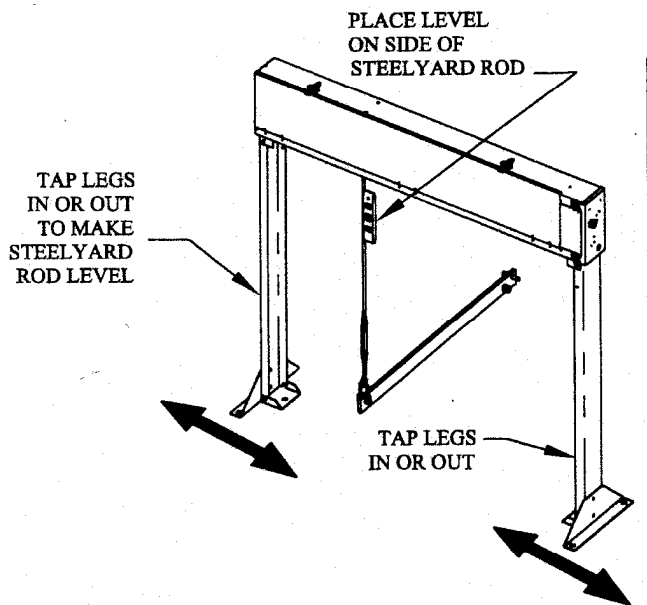


FIG. 3A

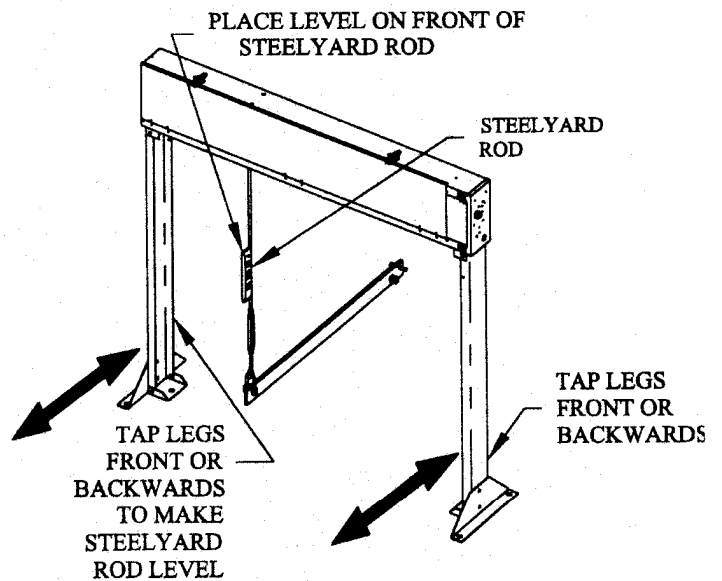


FIG. 3B

- ☐ 4) Make sure that the transverse lever is level and the arrows on the decal are pointing up. **This is very important.** See Fig. 4.

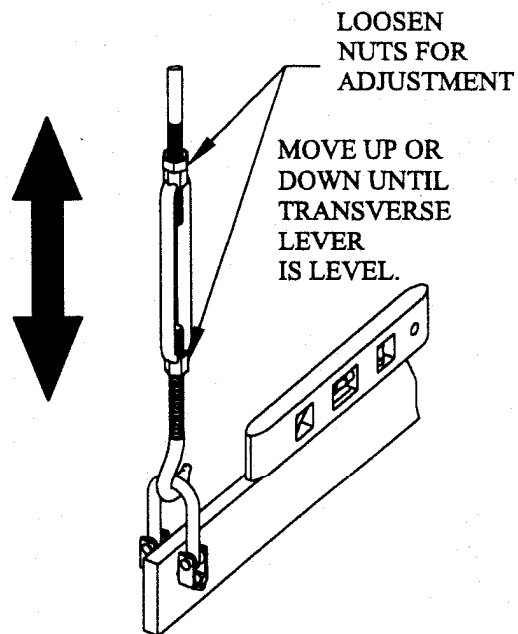


FIG. 4

- ☐ 5) Make sure that bin does not rock diagonally. To check this, step on each corner of the bin leg. If it rocks, shims are needed. See Fig. 5.

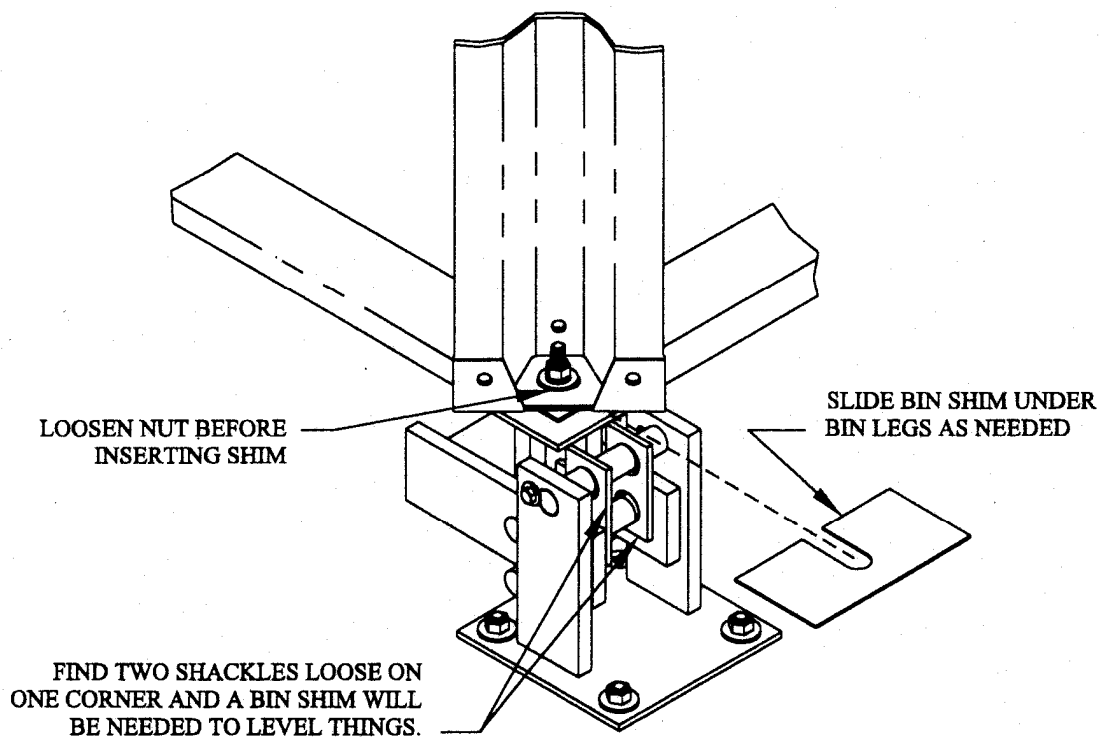


FIG. 5

- ❑ 6) Check to make sure that the beam is not touching the sides of the trig loop. See Fig. 6A & 6B.

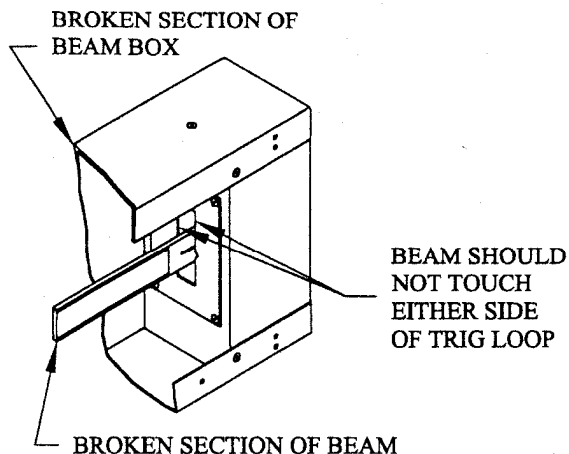


FIG. 6A

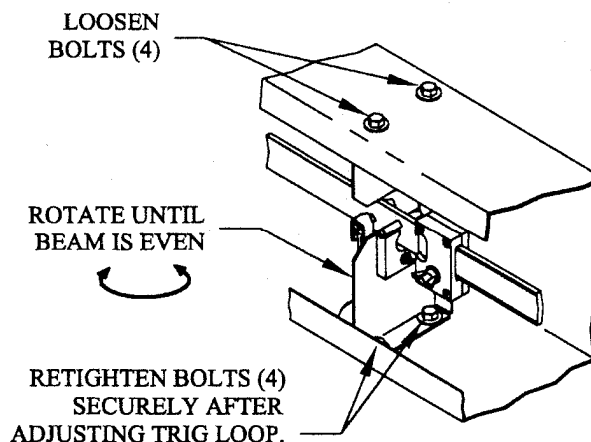


FIG. 6B

- ❑ 7) Sometimes, if the fill system is installed after the scale is bolted down, it may cause the bin to shift with the scale. Check the $\frac{3}{4}$ " x $\frac{3}{4}$ " square bar that is under each bin leg. Make sure it is not touching the 1" round pin. If it is touching, loosen the bolt that holds the bin to the top mounting plate; shift the top mounting plate so that there is about $\frac{1}{4}$ " clearance. Refer back to Fig's. 2D & 2E. Check all 4 corners.
- ❑ 8) Balancing the scale for the first time to zero.
- Slide the poise to zero on the beam and tighten. See Fig. 8A. Loosen the back balance set screw and move the block forward or backward to get the beam close to balancing. Tighten the set screw. Use the $\frac{1}{2}$ " screw for the final balance. Tighten the $\frac{3}{4}$ " nut. See Fig. 8B. Make sure the beam floats freely and levels back out at zero again. Try this a couple of times.

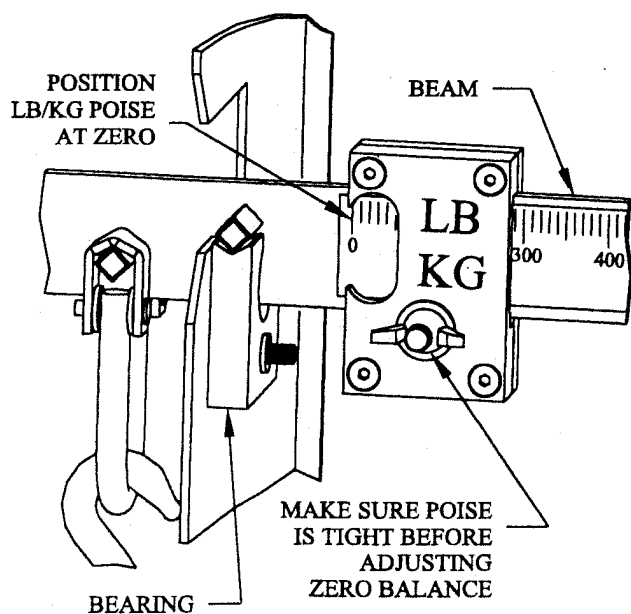


FIG. 8A

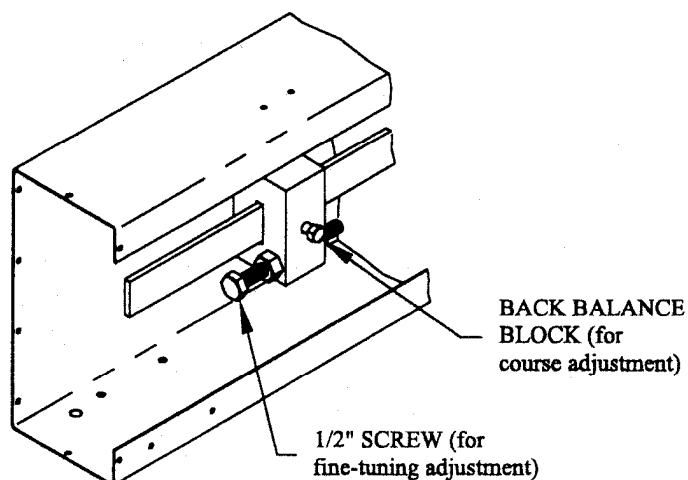


FIG. 8B

- ☐ 9) Check the micro switches to see if both whiskers are touching the beam at the same time. If they are, they need to be adjusted. See Fig. 9.

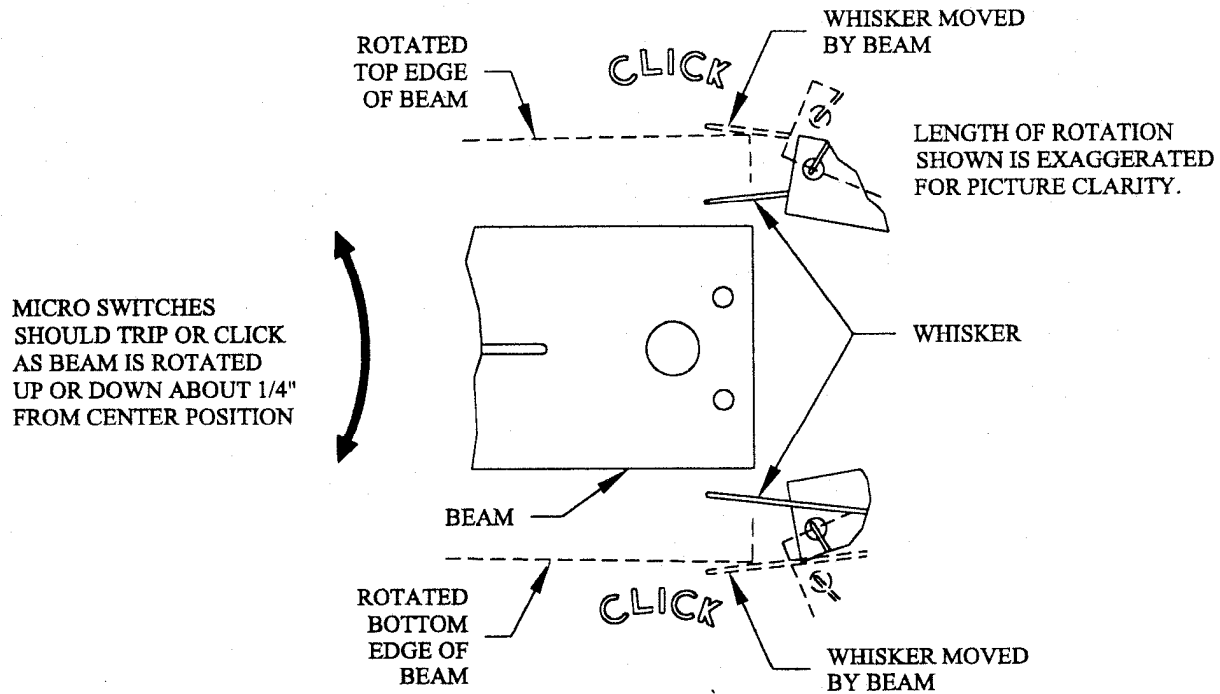


FIG. 9

- ☐ 10) Charging the system.
Set the poise to 200 lbs. Start the fill system motor, the motor will stop when the 200 lbs. is reached. Slide the poise back to zero. Run the cross fill motors until feed is flowing out, stop the motors, and rebalance the scale to zero. The scale is now ready for use.

This image shows a single sheet of white paper with horizontal blue or grey ruling lines. The lines are evenly spaced and run across the width of the page. There are no margins, text, or other markings on the paper.

LAST CHECK

(Remember to check off each item)

ITEMS COMMENTS, FINDINGS

- ☐ 1) _____

- ☐ 2) _____

- ☐ 3) _____

- ☐ 4) _____

- ☐ 5) _____

- ☐ 6) _____

- ☐ 7) _____

- ☐ 8) _____

- ☐ 9) _____

- ☐ 10) _____



**210 E. Main St.
P.O. Box 117
Coldwater, OH 45828 USA**

**Toll Free Orders 800.998.2526
Phone 419.678.8731
Fax 419.678.2200**



PEOPLE. PRODUCTS. SOLUTION.