

Twin Fill System Bin Cap

506280

Quick Sheet

Introduction

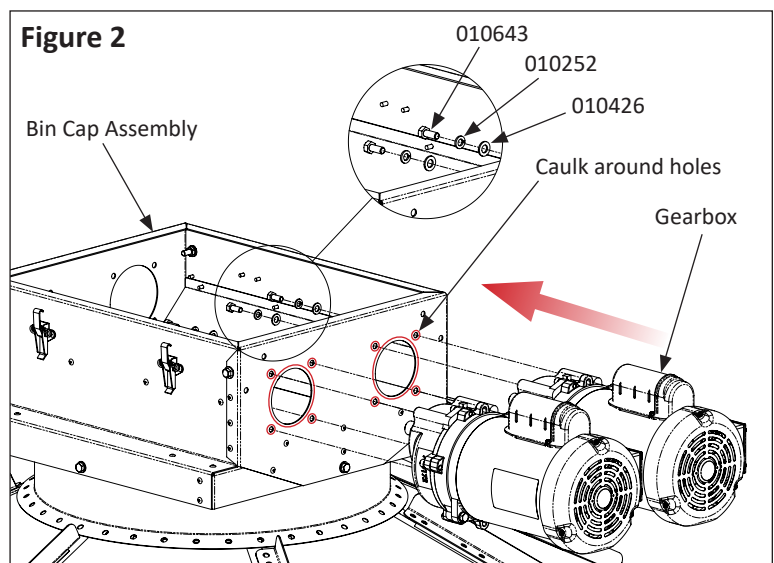
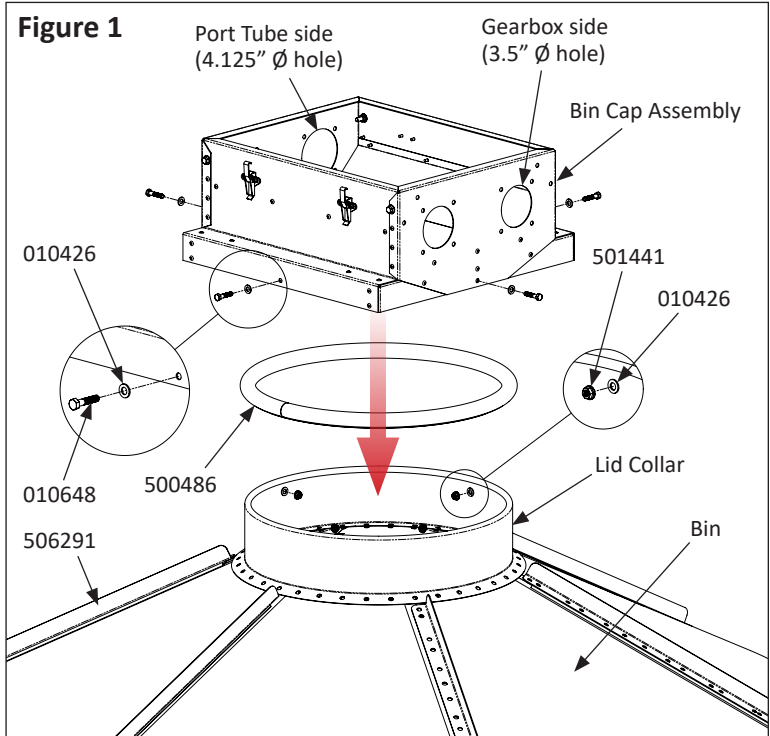
The Twin Fill System Bin Cap allows for the installation of two flexible auger fill systems to discharge into the top of a feed bin.

Installation Instructions

Step 1: Install 506291 Roof Deck Angles onto each roof deck seam during feed bin assembly, using hardware supplied with feed bin, *as shown in Figure 1*. The number of Roof Deck Angles will be based on the size of the feed bin, and can be found in the Parts List.

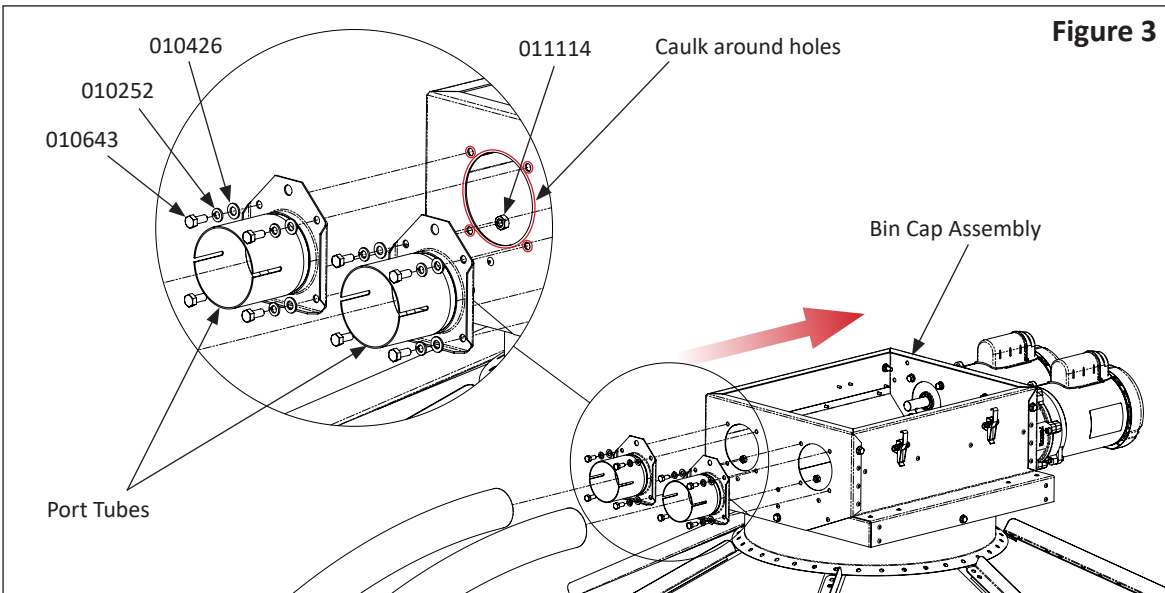
Step 2: Install the 500486 Foam Weatherstripping onto the Feed Bin Lid Collar. Set the Bin Cap Assembly onto the collar and orient it in the direction of incoming augers. **NOTE:** There are two different size holes in the Bin Cap Assembly. The Auger Port Tubes are the larger 4.125" diameter holes. Drill (4) 11/32" holes into the Lid Collar once the Bin Cap Assembly is oriented correctly, using the Bin Cap Assembly as a template. Install Bin Cap Assembly to the Lid Collar using hardware supplied in 506290 Twin Fill System Hardware Bag: (4) 010648 bolts, (8) 010426 washers, and (4) 501441 nuts, *as show in Figure 1*.

Step 3: Caulk around holes and then install Gearbox to the Bin Cap Assembly using hardware from the Gearbox Hardware Bag supplied with the Gearbox: (4) 010643 bolts, (4) 010426 washers, and (4) 010252 lock washers per Gearbox, *as shown in Figure 2*.

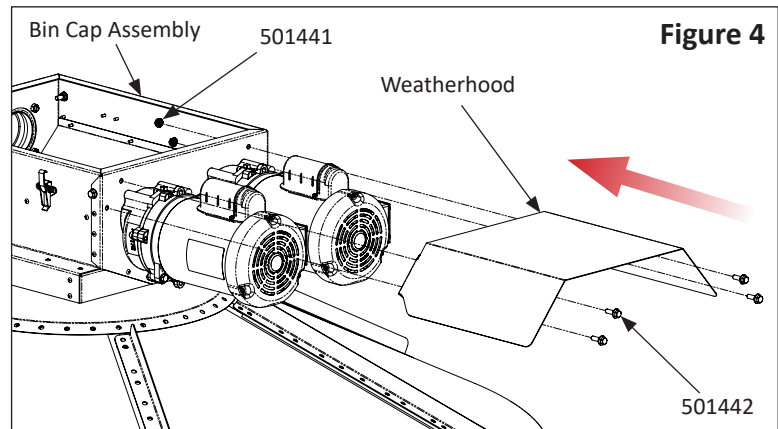


Installation Instructions - continued

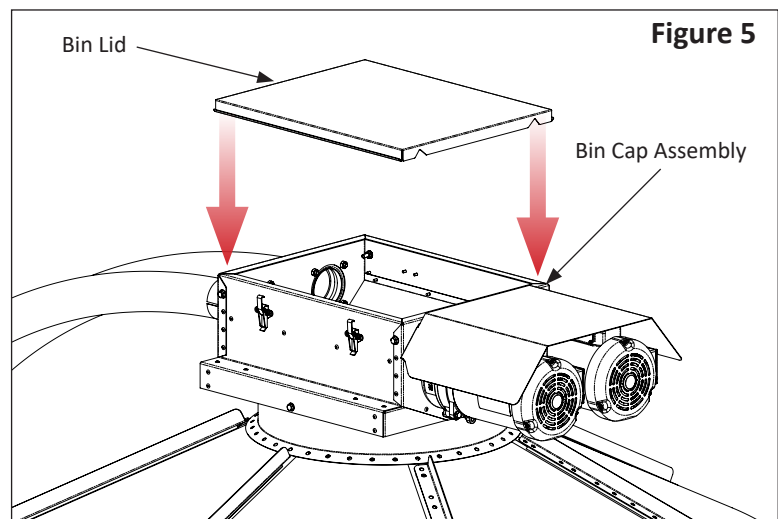
Step 4: Caulk around holes and then install Port Tubes to the Bin Cap Assembly using hardware from the Port Tube Hardware Bag, as supplied with the Port Tube and Driver Assembly: (4) 010643 bolts, (4) 010426 washers, (4) 010252 lock washers, and (4) 011114 nuts per Port Tube Assembly, as shown in Figure 3. **NOTE:** If installing 740 Port Tubes, mark and drill new holes for the bolt locations.



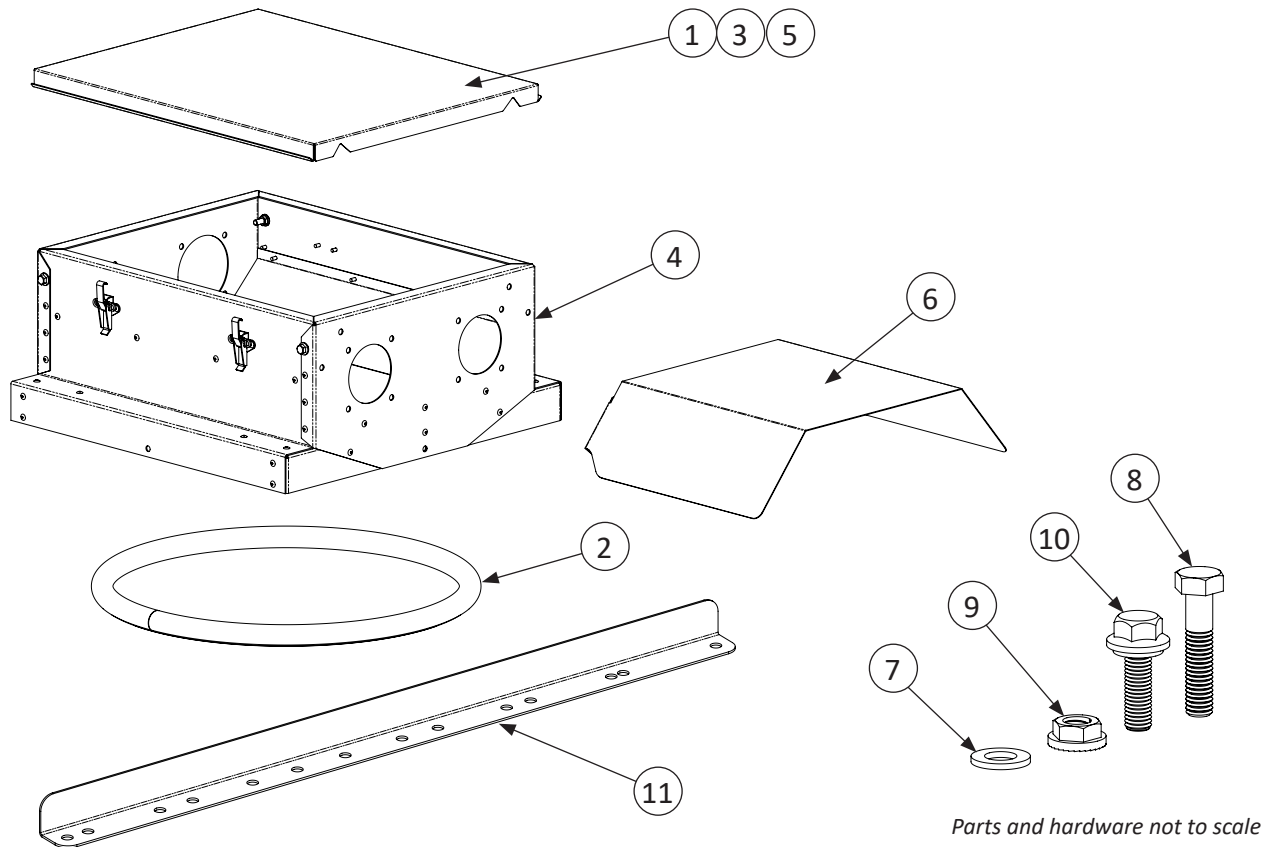
Step 5: Caulk around holes then install Weatherhood to the Bin Cap Assembly over Gearboxes/Motors using hardware supplied in 506290 Twin Fill System Hardware Bag: (4) 501442 bolts and (4) 501441 nuts, as shown in Figure 4.



Step 6: Install the Bin Lid to the Bin Cap Assembly, as shown in Figure 5.



Twin Fill System Bin Cap - Repair Parts List



KEY	PART #	QTY	DESCRIPTION
506280 - TWIN FILL SYSTEM BIN CAP			
1	500443	1	SAFETY LID DECAL
2	500486	1	FOAM, 1/2" ID, 3/8" WIDE, 6" LONG
3	500487	6.25	WEATHERSTRIP, 1/8" THICK X 3/4" WIDE
4	506281	1	TWIN FILL SYSTEM BIN CAP ASSEMBLY
5	506286	1	TWIN BIN CAP BIN CAP LID
6	506287	1	TWIN BIN CAP WEATHERHOOD
506290 - TWIN FILL SYSTEM HARDWARE BAG			
7	010426	8	5/16" FLAT WASHER
8	010648	4	5/16-18 X 1-1/2" HEX HEAD CAP SCREW
9	501441	8	5/16-18 HEX FLANGE NUT
10	501442	4	5/16" X 1" HEX BIN BOLT
506291 - TWIN BIN CAP ROOF DECK ANGLES			
11	506291	6	TWIN BIN CAP ROOF DECK ANGLE (FOR 6' BIN)
		6	TWIN BIN CAP ROOF DECK ANGLE (FOR 7' BIN)
		9	TWIN BIN CAP ROOF DECK ANGLE (FOR 9' BIN)
		12	TWIN BIN CAP ROOF DECK ANGLE (FOR 12' BIN)

North America:

Phone: 800.99VALCO; 800.998.2526

Fax: 419.678.2200

Email: sales@val-co.com

990285

REV [-]

International:

Phone: (+1) 419.678.8731

Fax: (+1) 419.678.2200

Email: intl.sales@val-co.com