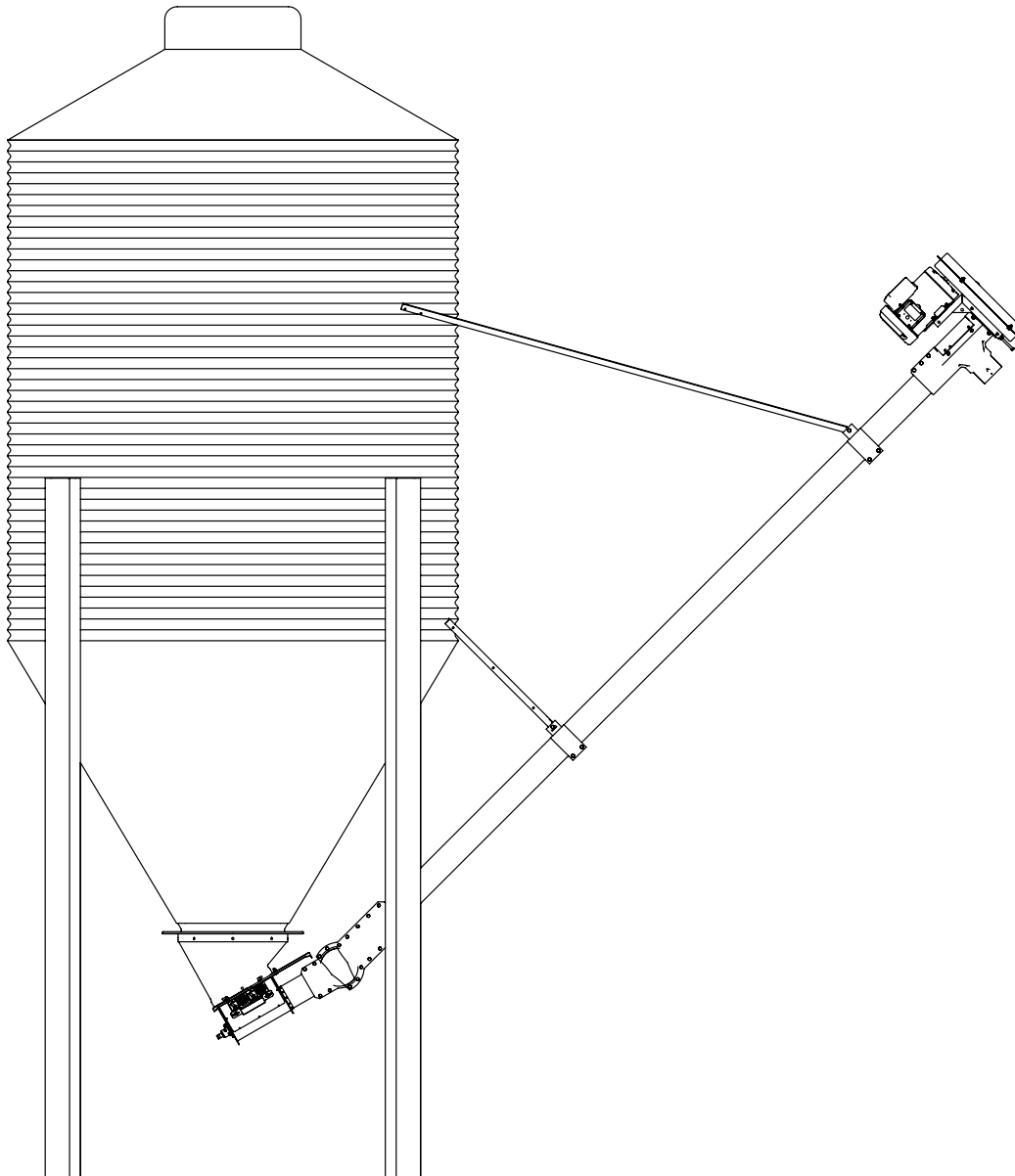




Rigid Auger Feed Delivery System Installation & Operator's Manual

Models 704 (4") & 706 (6")



Page left intentionally blank

Table of Contents

VAL PRODUCTS, INC. WARRANTIES	4
VAL PRODUCTS, INC. WARRANTIES - continued	5
Introduction	
Safety Information / Manual Symbols	6
Installation / Tools	7
System Overview	8
Rigid Auger Capacities & Horsepower Requirements	9
Assembly Instructions	
Assembly Instructions: 4" Discharge Head	10
Assembly Instructions: 4" Discharge Head - continued	11
Assembly Instructions: 6" Discharge Head	12
Assembly Instructions: 6" Discharge Head - continued	13
Connection Kit Assembly Instructions: Adjustable & Straight Connector	14
Assembly Instructions: Slide Valve & Hardware Installation	15
Assembly Instructions: Slide Valve & Hardware Installation - continued	16
Assembly Instructions: Slide Valve & Hardware Installation - continued	17
Auger Bracing Assembly Instructions	18
Start-Up and Break-In Information	19
Troubleshooting Guide	20
Parts Pages	21
Exploded View: 4" Discharge Head/Motor Mount - Single Belt	22
Parts List: 4" Discharge Head/Motor Mount - Single Belt	23
Exploded View: 6" Discharge Head/Motor Mount - Single Belt	24
Parts List: 6" Discharge Head/Motor Mount - Single Belt	25
Motor Pulleys, Bushings & V-Belts	26
Farm Duty Motors for Rigid Augers	27
4" Extension Auger & Tube Assemblies	28
6" Extension Auger & Tube Assemblies	29
4" Straight-Out Non-Adjustable Auger Connection Kit	30
6" Straight-Out Non-Adjustable Auger Connection Kit	31
4" Universal Parts Adjustable Auger Connection Kit	32
6" Universal Parts Adjustable Auger Connection Kit	33
4" Rigid Auger Lower Boot With Slide Valve	34
6" Rigid Auger Lower Boot With Slide Valve	35
Upper Boot Transitions	36
Auger Braces & Kits	37
Customer Service	38



VAL PRODUCTS, INC. WARRANTIES

MANUFACTURED PRODUCTS STANDARD WARRANTY:

Val Products, Inc. (Valco) warrants that Valco-manufactured products (other than the products subject to an extended warranty set forth below) will be free of defects in material and workmanship, when used in a usual and customary fashion, for a period of one (1) year from the date of original purchase from an authorized Valco distributor or three (3) years from the date of original purchase from Valco, whichever period expires first. If Valco is notified that such a defect exists within that time and, upon inspection, agrees that the product is defective, Valco will, at its option, (a) repair or replace (EXW Valco's plant) the defective product, or (b) refund to the original purchaser (Valco's distributor) the original purchase price paid for the defective product less any installation, shipping, or other charges associated with the original purchase. All defective products must be returned to a Valco designated location for evaluation. Valco's determination as to whether the product is defective is final. See the General Conditions and Limitations.

Product	<u>Extended¹ Warranty Coverage Period</u>	<u>Limited² Warranty Coverage Period</u>	<u>Total Warranty Coverage Period (Extended + Limited)</u>
VR & VBL series drinkers	5 years	5 years	10 years
VQ, VA & VBR series drinkers	2 years	3 years	5 years
Roll-formed Tube	3 years	7 years	10 years
Coreless auger ³	3 years	7 years	10 years
FUZE [®] feed pans	2 years	3 years	5 years
Fiberglass fan housings	Lifetime ⁴	na	Lifetime ⁴
Aluminum fan blades	Lifetime ⁴	na	Lifetime ⁴
Z-Fan [™] housings ⁵	7 years	na	7 years

Explanations/Conditions of above listed footnotes for VAL-CO warranties:

1. Extended Warranty Coverage: Valco warrants products subject to an extended warranty (above) will be free of defects in material and workmanship, when used in a usual and customary fashion, for the period of time as stated from the date of original purchase by an authorized Valco distributor. If Valco is notified that such a defect exists within that time and, upon inspection, agrees that the product is defective, Valco will, at its option, (a) repair or replace (EXW Valco's plant) the defective product, or (b) refund to the original purchaser the original purchase price paid for the defective product less any installation, shipping, or other charges associated with the original purchase. All defective products must be returned to a Valco designated location for evaluation. Valco's determination as to whether the product is defective is final. See the General Conditions and Limitations.
2. Limited warranty coverage products will be provided at a charge rate of 50% off the Valco list price at the time the warranty claim is made known to the company in writing and is subject to Valco's standard warranty policy conditions and limitations.
3. Coreless Auger warranty is voided if conveying materials with greater than 18% moisture content.
4. Lifetime warranty for fiberglass fan housings and cast aluminum blades is limited to products that prove to be defective in workmanship or material and become unusable over the life of the structure where the product was originally installed, provided that the product has remained undisturbed in its original installation location, and will be repaired or replaced, at Valco's option, at no charge (excluding labor of removal and installation and shipping), EXW Valco's plant.
5. Z-Fan housings are warranted for 7 years against rust through when employed in poultry housing ventilation applications only. Fan components excluding housing are covered by Valco's standard warranty.



VAL PRODUCTS, INC. WARRANTIES - continued

General Conditions and Limitations

1. The Product must be installed and operated in accordance with instructions published by Valco or the warranty will be void.
2. Warranty will be void if all components of the product or system are not original equipment supplied by the manufacturer.
3. Products not manufactured by Valco and supplied by outside manufacturers (such as, but not limited to, certain electrical motors, certain controls, gas valves, etc.) are warranted separately by the respective manufacturer and only to the extent of the manufacturer's warranty.
4. Valco feed bins are designed to be used with free-flowing agricultural feed materials with a density proximate to 40 pounds (18.15 kilograms) per cubic foot (.03 cubic meter). Soybean meal, meat scraps and other materials, both agricultural and industrial, are not free flowing and may significantly exceed recommended material density. Feed bin structural failure from their use will void this warranty.
5. Valco does not warrant against feed bin structural failure, or bin unloading components such as flexible auger transitions and boots that arises due to the addition of aftermarket devices attached to, or installed within or attached to the feed bin structure for the purpose of enhancing feed material flow and/or the elimination of feed bridging issues.
6. Warranty applies only to products used in applications as originally intended by Valco – other applications in industry or commerce are not covered by the Warranty. Valco products are expressly not designed or authorized for use in any applications where intended to sustain or support human life or any other application where the failure of the product could result in personal injury or death.
7. Malfunctions resulting from misuse, abuse, mismanagement, negligence, alteration, accident, lack of proper maintenance, lightning strikes, electrical power surges, or electrical power interruption shall not be considered defects under the Warranty. Corrosion, material deterioration and/or equipment malfunction caused by or consistent with the excessive additions of chemicals, minerals, sediments or other foreign elements with the product shall not be considered defects under the Warranty.
8. VALCO WILL NOT, UNDER ANY CIRCUMSTANCES, BE LIABLE FOR ANY KIND OF SPECIAL, INCIDENTAL, CONSEQUENTIAL, OR CONTINGENT DAMAGES INCLUDING, BUT NOT LIMITED TO, LOST OR DAMAGED PRODUCT, GOODS OR LIVESTOCK, COSTS OF TRANSPORTATION, LOST SALES, LOST ORDERS, LOST INCOME, INCREASED OVERHEAD, LABOR AND INCIDENTAL COSTS AND OPERATIONAL INEFFICIENCIES. IN NO EVENT SHALL THE WARRANTY LIABILITY EXCEED THE INVOICED PRICE OF THE PRODUCT TO THE ORIGINAL PURCHASER.
9. THE WARRANTIES SET FORTH ABOVE CONSTITUTE VALCO'S ENTIRE AND SOLE WARRANTY. VALCO EXPRESSLY DISCLAIMS ANY AND ALL OTHER WARRANTIES INCLUDING, BUT NOT LIMITED TO, ANY AND ALL OTHER EXPRESS OR IMPLIED WARRANTIES AS TO THE MERCHANTABILITY, FITNESS FOR A PARTICULAR PURPOSE OR USE, DESCRIPTION OF QUALITY OF THE PRODUCT FURNISHED, AND ANY OTHER WARRANTY ARISING BY OPERATION OF LAW, CUSTOM OR USAGE.
10. Valco denies any authorization of any distributor, dealer, agent, or employee to modify, extend, or otherwise alter the conditions of any warranty in addition to, or in lieu of, those conditions and terms expressly stated above. Any exceptions not noted in the body of the Warranty must be authorized in writing by an officer of Valco. Valco reserves the right to change or delete models, or change specifications at any time without notice or obligation to improve previous products.

Effective April 1, 2020



Safety Information / Manual Symbols

CAUTION, WARNING, and DANGER decals have been placed on the equipment to warn of potentially dangerous situations. Care should be taken to keep these decals in good condition and readable at all times. Replace any missing or damaged decals. Using VAL-CO equipment for purposes other than those specified in the manual could cause serious personal injury or equipment damage. The safety warnings are included in this manual as a guide to help and encourage the safe operation of your equipment. It is your responsibility to evaluate the hazards of each operation and implement the safest method of protecting yourself as owner and/or operator.



= WARNING - The safety alert symbol is always used on warning signs that involve your safety or has extra significance since it is describing the importance of a feature or explaining a step to which you should pay close attention to avoid problems.



= CAUTION - potential hazard, if ignored minor or moderate injury MAY occur.



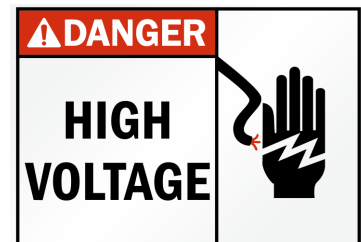
= WARNING - probable hazard, if ignored serious injury or death COULD occur.



= DANGER - imminent hazard, if ignored serious injury or death WILL occur.

DANGER - ELECTRICAL HAZARD

- Disconnect electrical power before inspecting or servicing equipment unless maintenance instructions specifically state otherwise.
- Ground all electrical equipment for safety.
- A qualified electrician must do all electrical wiring in accordance with local and national electrical codes.
- Ground all non-current carrying metal parts to guard against electrical shock.
- Motor overload protection, electrical disconnects and over current protection are not supplied with the equipment.



Danger - Moving Auger

Severe personal injury will result if electrical power is not disconnected prior to servicing or inspecting equipment.



= NOTE - take notice this may help you!



= CHECK - the details of all requirements, processes or procedures of instructions listed.



= IMPORTANT INFO. - be sure to read!



= STOP - before you go further check the details of all requirements, processes or procedures of instructions listed.



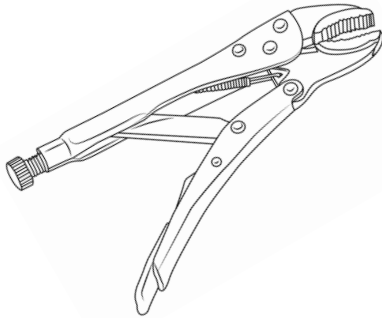
= PLAN - plan before continuing.



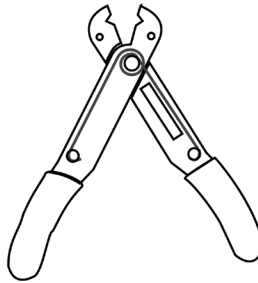
Installation / Tools

- Locking Pliers
- Wire Strippers / Cutters
- Allen Wrench Set
- Phillips Screwdriver, #2
- Straight Screwdriver, 1/4"
- Drill with various drill bits
- Driver/Socket/Wrench Set with 6" extension
- Open End Wrenches
- Adjustable Wrench

Locking Pliers



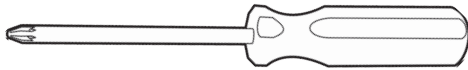
Wire Strippers / Cutters



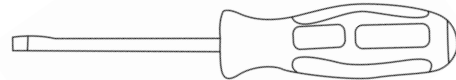
Allen Wrench Set



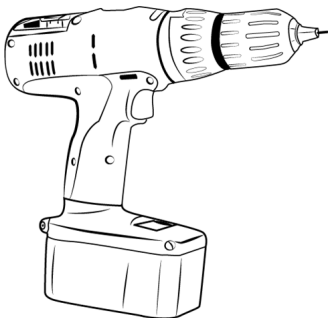
Phillips Screwdriver, #2



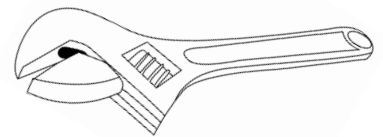
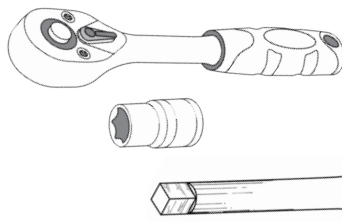
Straight Screwdriver, 1/4"



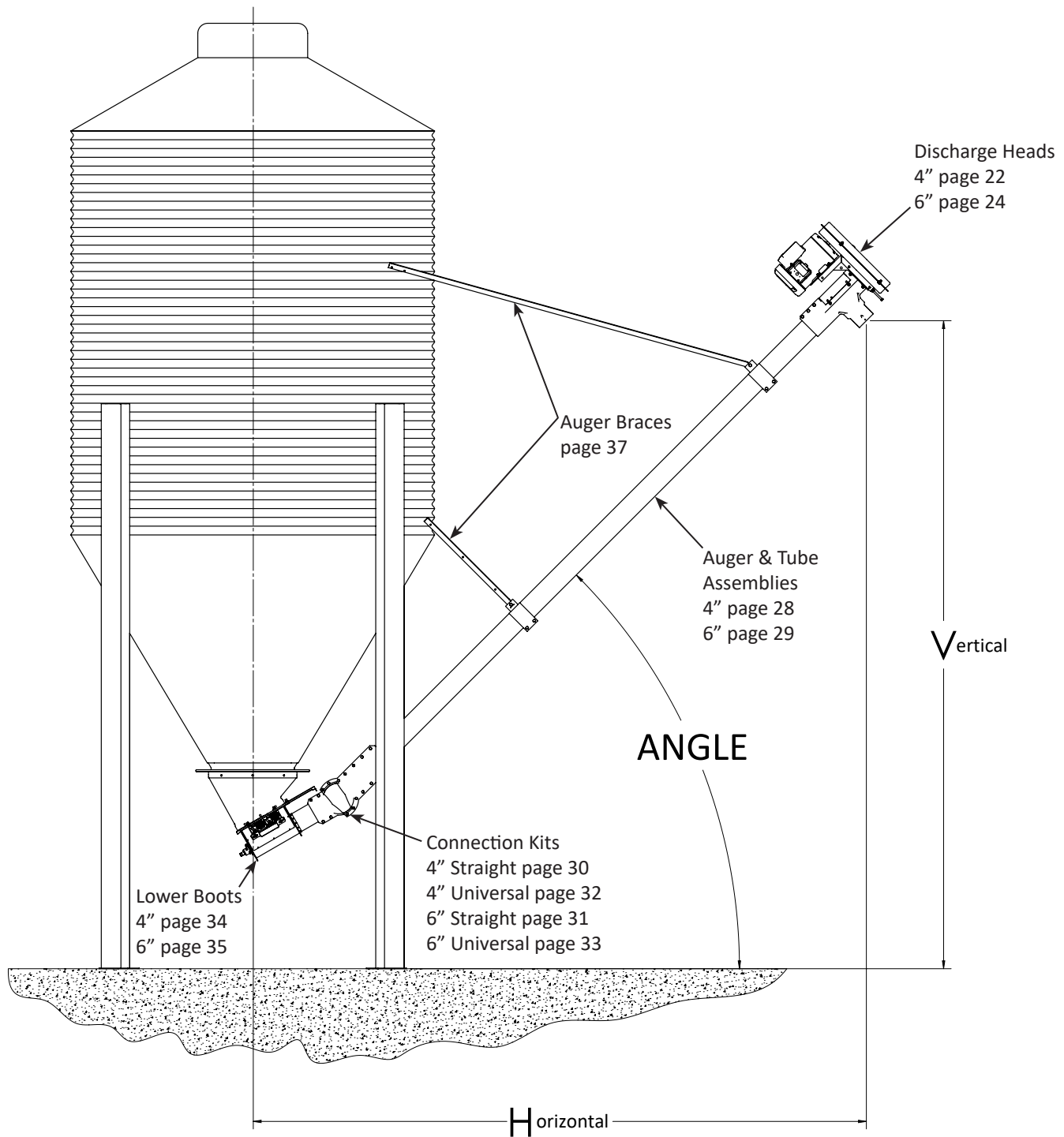
Drill, with various drill bits



Socket Set, Open End Wrenches, and Adjustable Wrench



System Overview



ANGLE OF ELEVATION	AUGER LENGTH													
	5 FT.		8 FT.		11 FT.		12 FT.		16 FT.		20 FT.		21 FT.	
	H	V	H	V	H	V	H	V	H	V	H	V	H	V
15° ANGLE	6' 4"	2' 8"	9' 2"	3' 6"	12' 1"	4' 3"	13' 1"	4' 6"	16' 11"	5' 7"	20' 10"	6' 7"	21' 9"	6' 10"
30° ANGLE	5' 11"	3' 11"	8' 7"	5' 5"	11' 2"	6' 11"	12' 0"	7' 5"	15' 6"	9' 5"	18' 11"	11' 5"	19' 10"	11' 11"
45° ANGLE	5' 4"	5' 0"	7' 5"	7' 2"	9' 7"	9' 3"	10' 3"	10' 0"	13' 1"	12' 10"	15' 11"	15' 8"	16' 7"	16' 4"

Rigid Auger Capacities & Horsepower Requirements

4" RIGID AUGER CAPACITY & HORSEPOWER REQUIREMENT

DEGREE OF ELEVATION	AUGER SPEED (RPM)	APPROXIMATE CAPACITY LBS. PER HOUR	AUGER LENGTH - HORSEPOWER REQUIREMENT										
			4'	8'	10'	12'	16'	20'	25'	30'	35'	40'	50' - 100'
0° Horizontal	600	25,000	.5	.5	.5	.5	.75	.75	1	1	1.5	1.5	1.5
	500	20,000	.5	.5	.5	.5	.5	.75	.75	1	1	1.5	1.5
	400	14,000	.5	.5	.5	.5	.5	.5	.75	.75	.75	1	1.5
	300	9,000	.5	.5	.5	.5	.5	.5	.75	.75	.75	1	1.5
30°	600	21,000	.5	.5	.75	.75	1	1.5	1.5	1.5			
	500	17,500	.5	.5	.5	.75	.75	1	1.5	1.5	1.5		
	400	13,500	.5	.5	.5	.5	.75	.75	1	1	1.5		
	300	9,000	.5	.5	.5	.5	.5	.5	.75	.75	1	1.5	
40°	600	21,000	.5	.5	.75	.75	1	1.5	1.5	1.5			
	500	15,500	.5	.5	.5	.5	.75	1	1	1.5	1.5		
	400	12,500	.5	.5	.5	.5	.5	.75	.75	.75	1		
	300	9,000	.5	.5	.5	.5	.5	.5	.75	.75	.75		
45° Maximum	600	14,500	.5	.5	.5	.75	1	1	1.5	1.5			
	500	12,000	.5	.5	.5	.5	.5	.75	.75	1	1		
	400	9,700	.5	.5	.5	.5	.5	.75	.75	1	1		
	300	7,500	.5	.5	.5	.5	.5	.5	.75	.75	.75		

6" RIGID AUGER CAPACITY & HORSEPOWER REQUIREMENT

DEGREE OF ELEVATION	AUGER SPEED (RPM)	APPROXIMATE CAPACITY LBS. PER HOUR	AUGER LENGTH - HORSEPOWER REQUIREMENT											
			6'	11'	16'	21'	30'	40'	50'	60'	70'	80'	90'	100'
0° Horizontal	600	67,500	.75	1	1.5	2	3	5	5	5				
	400	45,000	.75	1	1.5	2	3	3	5	5	5	5		
45° Maximum	600	47,000	.75	1.5	2	3	5							
	400	31,500	.75	1.5	1.5	2	3	5						

Assembly Instructions: 4" Discharge Head

ITEM #	PART #	QTY	DESCRIPTION
PARTS LIST			
1	010252	14	5/16" SPLIT LOCK WASHER
2	010426	2	5/16" FLAT WASHER
3	010603	18	5/16-18 HEX NUT
4	010616	4	1/4" X 5/8" HEX BOLT
5	010643	7	5/16-18 X 3/4" HEX BOLT
6	010645	2	5/16-18 X 1" HEX BOLT
7	010648	1	5/16-18 X 1-1/2" HEX BOLT
8	010655	2	5/16-18 X 4" BOLT
9	011113	7	1/4-20 HEX JAM NUT
10	012793	4	1/4-20 NYLOCK NUT
11	500420	4	3/16" X 1" EXPANSION PIN

ITEM #	PART #	QTY	DESCRIPTION
PARTS LIST (continued)			
12	704043	1	4" AUGER IMPELLOR
13	704045	1	AUGER BRACE BRACKET & CLAMP
14	704073	1	4" COUPLING SHAFT, LESS PINS
15	704253	1	4" RIGID AUGER MOTOR MOUNT
16	704256	1	BEARING RETAINER PLATE
17	704257	1	DRIVE BASE PLATE
18	704292	1	4" DISCHARGE HEAD AUGER ASSEMBLY
19	704409	1	4" AUGER DRIVE SHAFT
20	704438	1	5/8" BEARING & LOCKING COLLAR
21	713194	1	SWITCH HOLE COVER
22	714143	1	4" DISCHARGE HEAD BODY
23	714147	1	TOP ACCESS COVER

Assemble as instructed. Refer to bill of materials above for part numbers and quantities.

- Note the orientation of the drive base plate (Figure 5). The weld-nuts should be on the bottom side in relation to the bearing. Also note the direction the bearing is installed. Place caulking on the connecting face, around the ID of the discharge head. Do not tighten bolts completely - the bearing must be loose enough to allow alignment with the auger drive shaft in step 2.
- Assemble the 5/16-18 X 1" and 5/16-18 X 1-1/2" bolts to the auger brace (Figure 6). Slide the assembly onto the discharge end of the auger tube and secure. Position the discharge head assembly on the discharge end of the auger tube so that the tube stops at the detents in the side of the discharge head (Figure 6). Secure the head with 5/16-18 X 3/4" bolts and finish nuts.

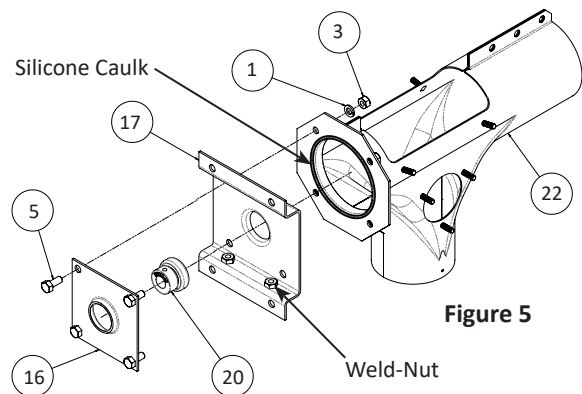


Figure 5

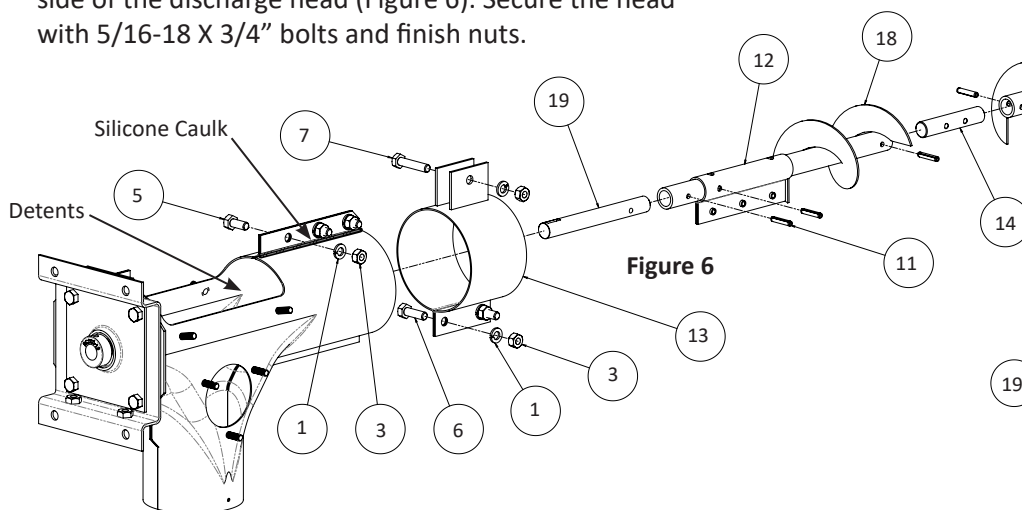


Figure 6

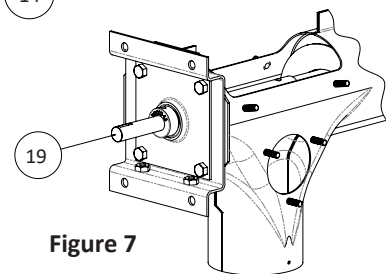
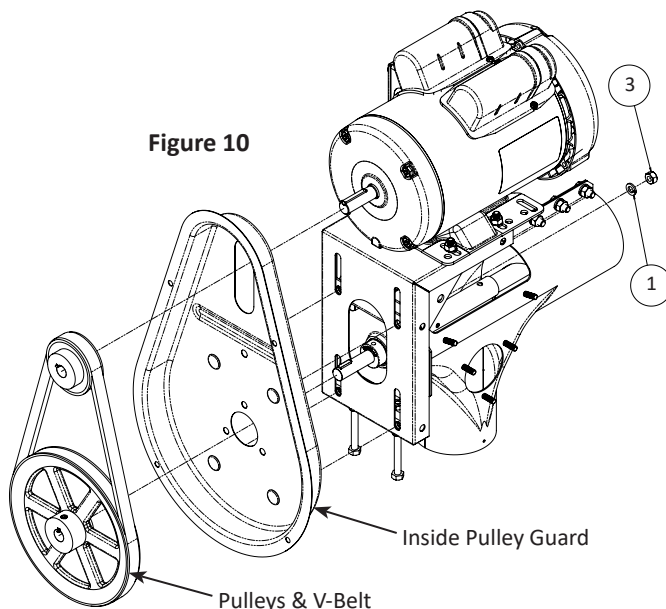
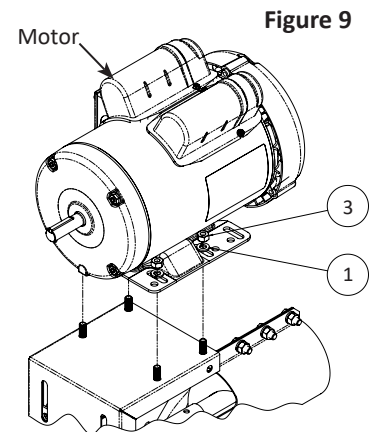
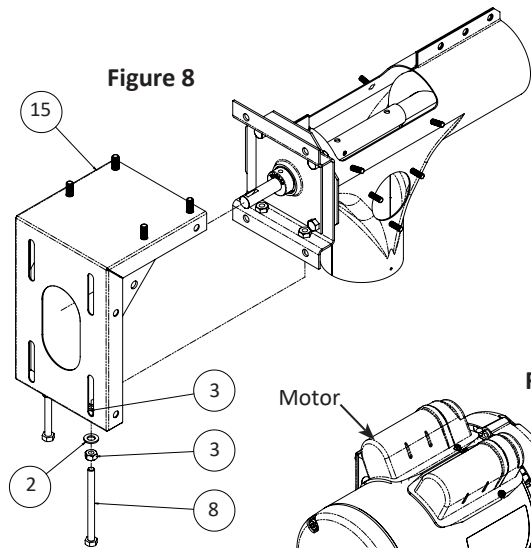


Figure 7

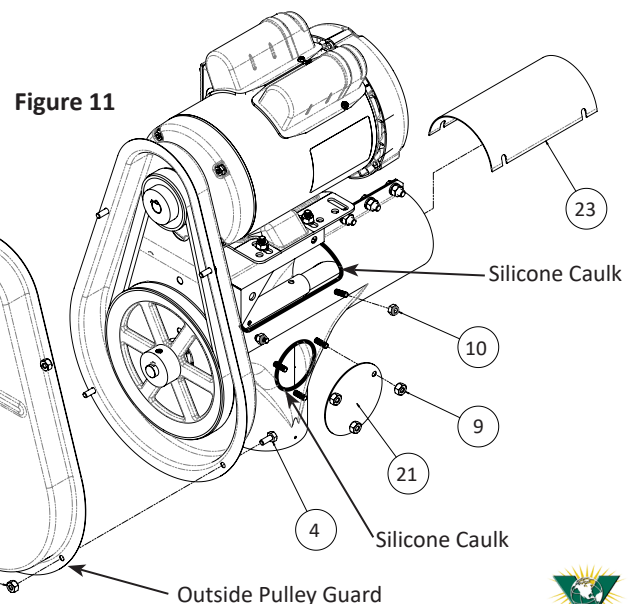
- Pull the auger drive shaft through the bearing until the auger shaft stops against the bearing back face (Figure 7). Slip the bearing locking collar on the drive shaft so the eccentric on the collar fits into the eccentric on the bearing. Turn the collar until tight and secure with the set screw in the locking collar. Tighten the nuts and bolts holding the discharge head, bearing retainer plate, and drive base plate.

Assembly Instructions: 4" Discharge Head - continued

4. Assemble the motor mount and bolt assembly to the discharge head as shown (Figure 8). Do not run the nuts on further than 1". Run the 5/16-18 X 4" bolts into the weld nuts on the base plate. Run the nuts to within 1/16" of the motor mount. Draw the nuts together tightly. Note that these bolts should still turn rather freely.
5. Assemble motor to motor mount using 5/16-18 hex nuts and lock washers (Figure 9). Leave nuts loose to allow motor adjustment in following steps.
6. Assemble inside pulley guard to motor mount loosely, using 5/16-18 hex nuts and lock washers (Figure 10). Mount pulleys and V-belt to motor and auger shaft as shown, leaving slack for further adjustment in the next step.
7. By turning the 5/16-18 X 4" bolts in place on the motor mount, the motor mount can be raised or lowered, increasing or reducing belt tension. Proper tension is achieved when roughly 1/2" of deflection is seen with slight pressure placed on the belt. Once a satisfactory belt tension has been obtained, the four 5/16-18 finish nuts holding the inside pulley guard to the motor mount should be tightened. Ensure the motor & drive sheave are square to the driven sheave.



8. Assemble the outside pulley guard to the inside pulley guard using the 1/4-20 X 3/8" hex head bolts and 1/4-20 lock nuts (Figure 11). Tighten these bolts. Place caulking on the perimeter of both the side hole cover and access cover. For the best seal, the caulking should be stretched slightly as it is applied. Place the side hole cover and access cover in place on the discharge head and secure with the 1/4-20 jam nuts.



9. See pages 14 thru 17 to attach lower boot, then move on to attaching the auger to the bin, page 18. Any adjustment of the auger screw in the tube can be done at the bearing at the bottom of the boot, rather than at the discharge end bearing.
10. Make sure all bolts are tight.

Assembly Instructions: 6" Discharge Head

ITEM #	PART #	QTY	DESCRIPTION
PARTS LIST			
1	010616	4	1/4" X 5/8" HEX BOLT
2	010623	2	1/4" X 1-1/2" HEX BOLT
3	010643	1	5/16-18 X 3/4" HEX BOLT
4	010645	8	5/16" X 1" HEX BOLT
5	010648	5	5/16-18 X 1-1/2" HEX BOLT
6	011114	8	5/16-18 HEX NUT
7	012789	21	5/16-18 NYLOCK NUT
8	012793	6	1/4-20 NYLOCK NUT
9	690117	4	5/16-18 X 2" HEX BOLT
10	704033	2	MOTOR MOUNT BOTTOM CHANNEL
11	704062	2	MOTOR MOUNT TOP CHANNEL
12	704406	1	#9 WOODRUFF KEY
13	706002	1	6" X 90 DEGREE DISCHARGE HEAD
14	706021	1	OUTSIDE BEARING RETAINER PLATE
15	706031	1	AUGER BRACE BRACKET & CLAMP

ITEM #	PART #	QTY	DESCRIPTION
PARTS LIST (continued)			
16	706055	2	VERTICAL CLAMP CHANNEL
17	706056	2	OVERHEAD MOTOR MOUNT RAIL
18	706060	1	SHEAVE RETAINING COLLAR
19	706068	1	REAR SUPPORT CLAMP
20	706090	1	PULLEY GUARD BOLT RETAINER PLATE
21	706106	1	MOTOR MOUNT ADAPTER PLATE
22	706162	1	6" IMPELLOR ASSY
23	706164	1	6" COUPLING SHAFT W/HARDWARE
23.1	010623	1	1/4" X 1-1/2" HEX BOLT
23.2	012793	1	1/4-20 NYLOCK NUT
23.3	706407	1	6" COUPLING SHAFT
24	706403	1	6" AUGER DRIVE SHAFT
25	706405	1	3/16" X 1-1/8" EXPANSION PIN
26	706414	1	7/8" BEARING
27	706415	1	7/8" LOCKING COLLAR

Assemble as instructed. Refer to bill of materials above for part numbers and quantities.

1. Note the orientation of the outside bearing retainer plate (Figure 12). Also note the direction the bearing is installed. The bearing fits into the socket eccentric side out and to the front. Do not tighten bolts completely - the bearing must be loose enough to allow alignment with the auger drive shaft in step 4.
2. Assemble auger brace using 5/16-18 X 1" and 5/16-18 X 1-1/2" bolts (Figure 12). Slide assembly onto discharge end of auger tube and secure. Attach auger to impeller assembly with coupling shaft using 1/4" x 1-1/2" hex bolts & 1/4" locknuts.
3. Insert the auger drive shaft into impeller assembly and secure with 1/4" x 1-1/2" hex bolts and lock nuts (Figure 13).

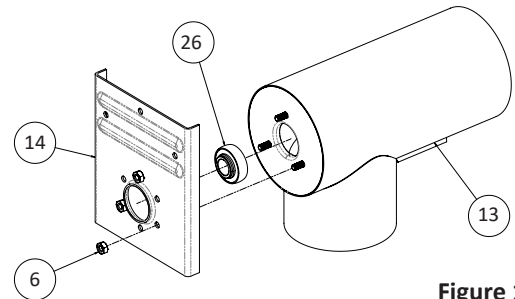


Figure 12

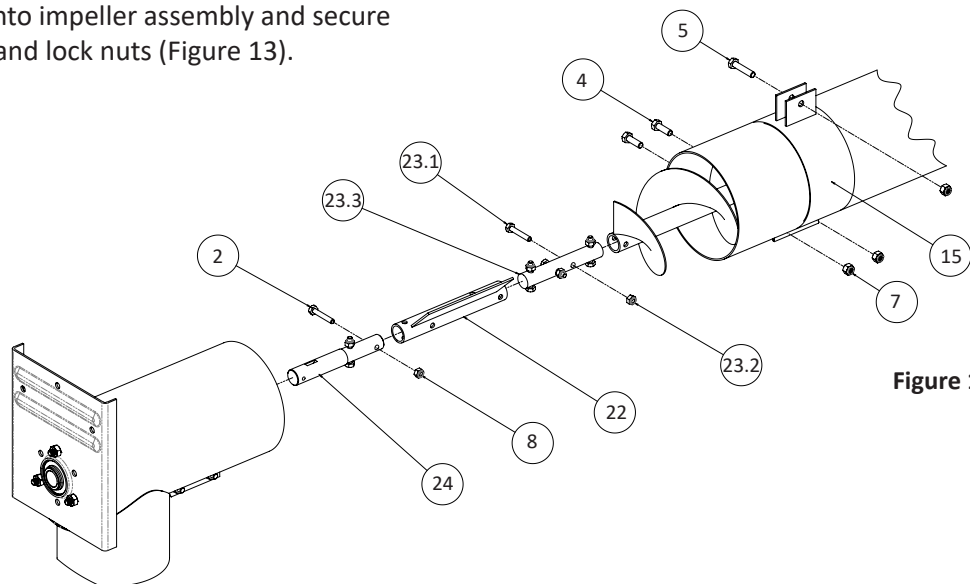


Figure 13

Assembly Instructions: 6" Discharge Head - continued

- Position assembled discharge head on the discharge end of the auger so that the auger tube is up to the edge of the spout and covers all openings in the lower seam, and the drive shaft protrudes through the bearing as much as possible. Secure the head in place with 5/16" x 1" hex bolts and nuts and tighten. Tighten the nuts holding the front bearing retainer plate in position. Pull the auger drive shaft through the bearing until the auger shaft stops against the bearing back face. Slip the bearing locking collar into the eccentric on the bearing. Turn the collar until tight and lock securely with the set screw in the collar. Insert the Woodruff key in the slot in the drive shaft (Figure 14).

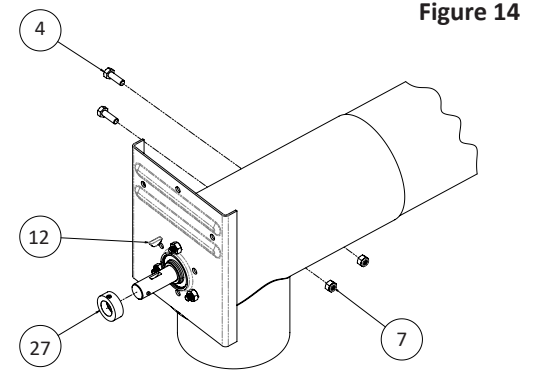


Figure 14

- Assemble inside pulley guard to bearing retainer plate, using 5/16-18 hex nuts and lock washers. Back off the set screw in the pulley on the drive shaft. Slide pulley onto auger drive shaft. Attach the pulley spacer collar on the end of the shaft with the 3/16" x 1-1/8" expansion pin. Slide the pulley out against the collar and tighten the set screw against the Woodruff key (Figure 15).

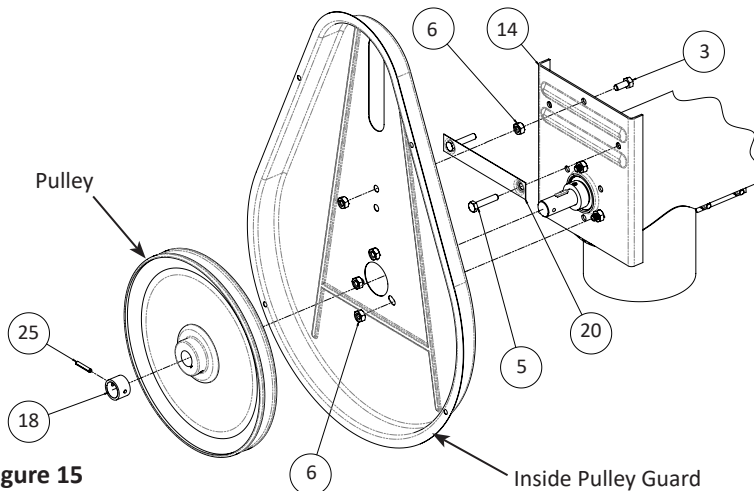


Figure 15

- Assemble motor loosely to channel mounts using 5/16-18 hex head bolts & nylock nuts as shown in Figure 16. (If motor frame is 182/184, use 706106 adapter plate, order separately. Mount pulleys and V-belt to motor and auger shaft as shown, leaving slack for further adjustment in the next step. The motor mount assembly can be raised or lowered, increasing or reducing belt tension. Proper tension is achieved when roughly 1/2" of deflection is seen with slight pressure placed on the belt. Adjust the motor position according to the motor drive pulley and the belt desired. After adjusting, tighten all nuts and bolts in the head.
- Assemble the outside pulley guard to the inside pulley guard using the 1/4-20 X 3/8" hex head bolts and 1/4-20 lock nuts (Figure 16). Tighten these bolts.
- See pages 14 thru 17 to attach lower boot, then move on to attaching the auger to the bin, page 18. Any adjustment of the auger screw in the tube can be done at the bearing at the bottom of the boot, rather than at the discharge end bearing.
- Make sure all bolts are tight.

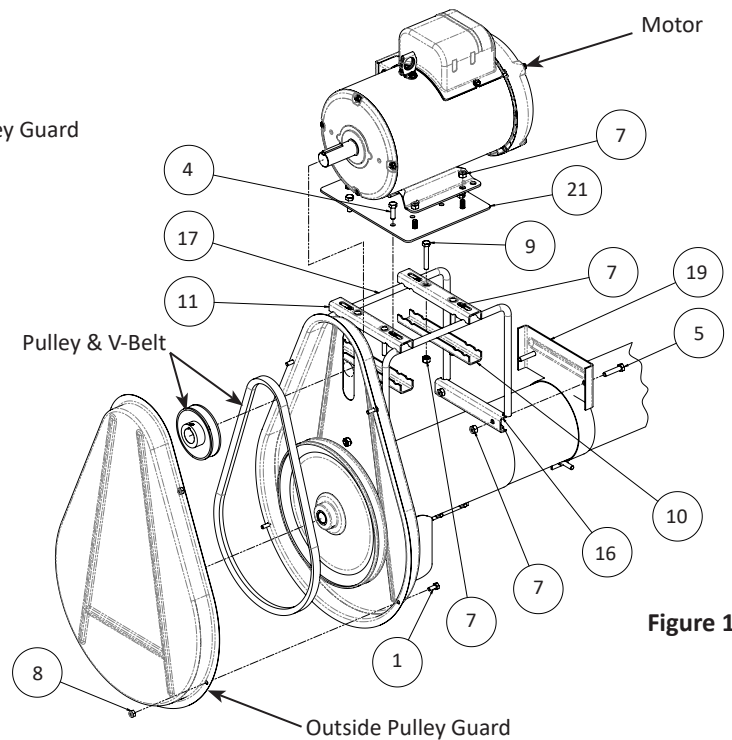


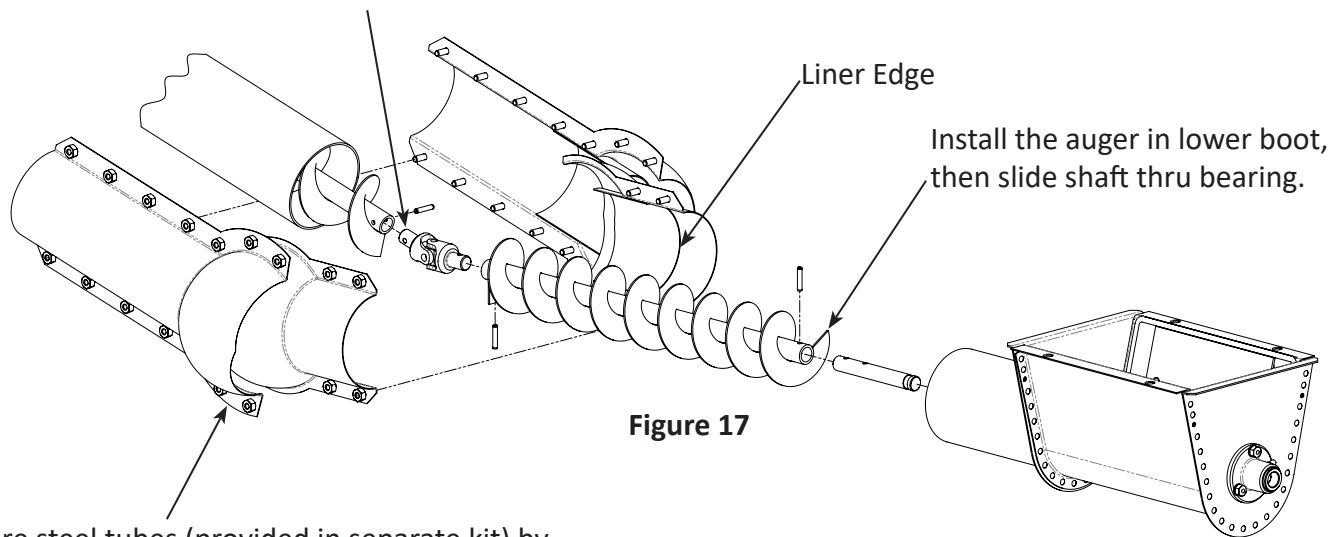
Figure 16

Connection Kit Assembly Instructions: Adjustable & Straight Connector

Adjustable Connector

The universal joint connection kit allows for 10°-50° auger adjustment when used with a 30° plastic upper boot transition (20° in either direction). NOTE: This is a one-time adjustment.

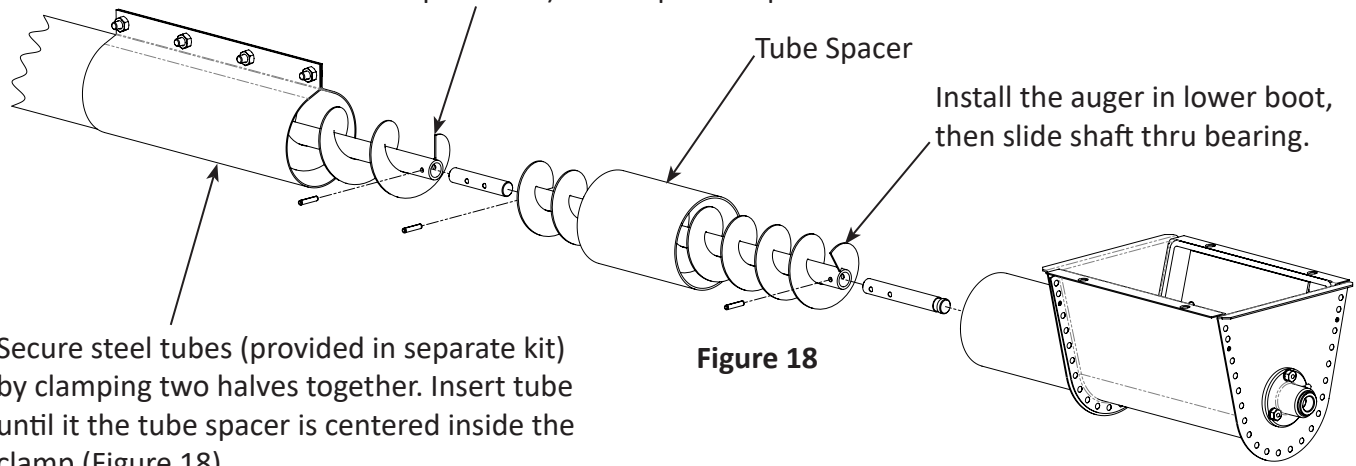
Connect the auger flighting (provided in separate kit) with expansion pin.



Secure steel tubes (provided in separate kit) by clamping two halves together. Insert tube until it stops against inner liner edge (Figure 17).

Straight Connector

Connect the auger flighting (provided in separate kit) with expansion pin.



Secure steel tubes (provided in separate kit) by clamping two halves together. Insert tube until the tube spacer is centered inside the clamp (Figure 18).

Assembly Instructions: Slide Valve & Hardware Installation

Slide Valve Orientation

The slide valve should open in the same direction as the feed flows, to ensure optimal feed flow (Figure 19).

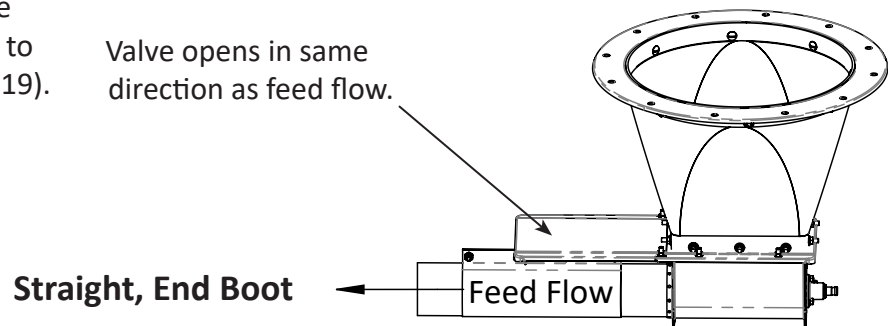
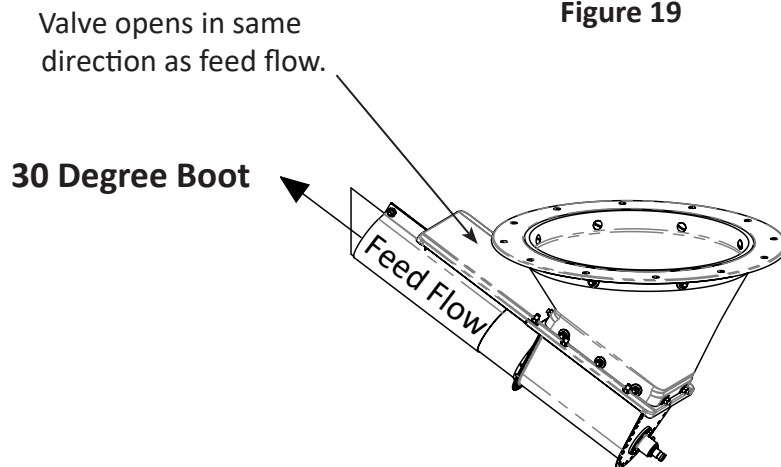


Figure 19



Upper collar shown for reference only.

Upper collar must be attached to feed bin during feed bin assembly.

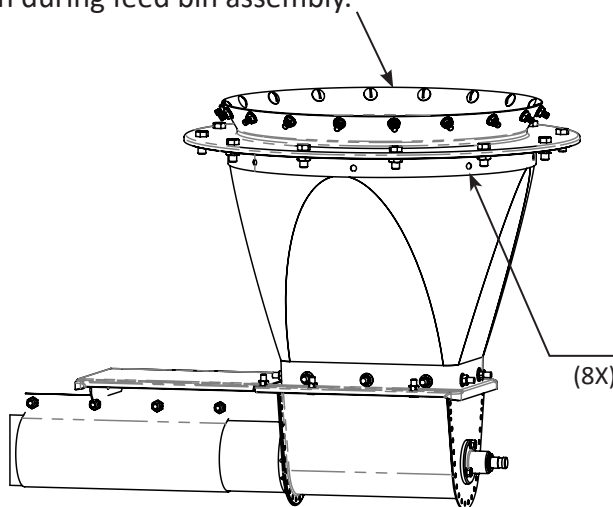


Figure 20

Drill Holes:

- Slide the plastic transition into the bottom collar until it seats against the top collar.
- Make sure the rectangular opening of the plastic transition is pointed in the desired direction auger will go.
- Use the bottom collar holes as guides to drill 11/32" (8.8 mm) diameter holes 8 times in the upper rim of the plastic transition (Figure 20).

Assembly Instructions: Slide Valve & Hardware Installation - continued

Caulking Instructions:

- To ensure moisture does not seep inside boot, all joints and hardware holes must be caulked properly.
- Clean the locations where caulking is to be applied.
- Use rope caulk supplied with feed bin between collars.
- Use UV resistant silicone caulk and apply between all mating parts as shown.
- There must be bead of caulk sealing each hardware hole (Figure 21, detail view).
- Reference Feed Bin Manual for more information.

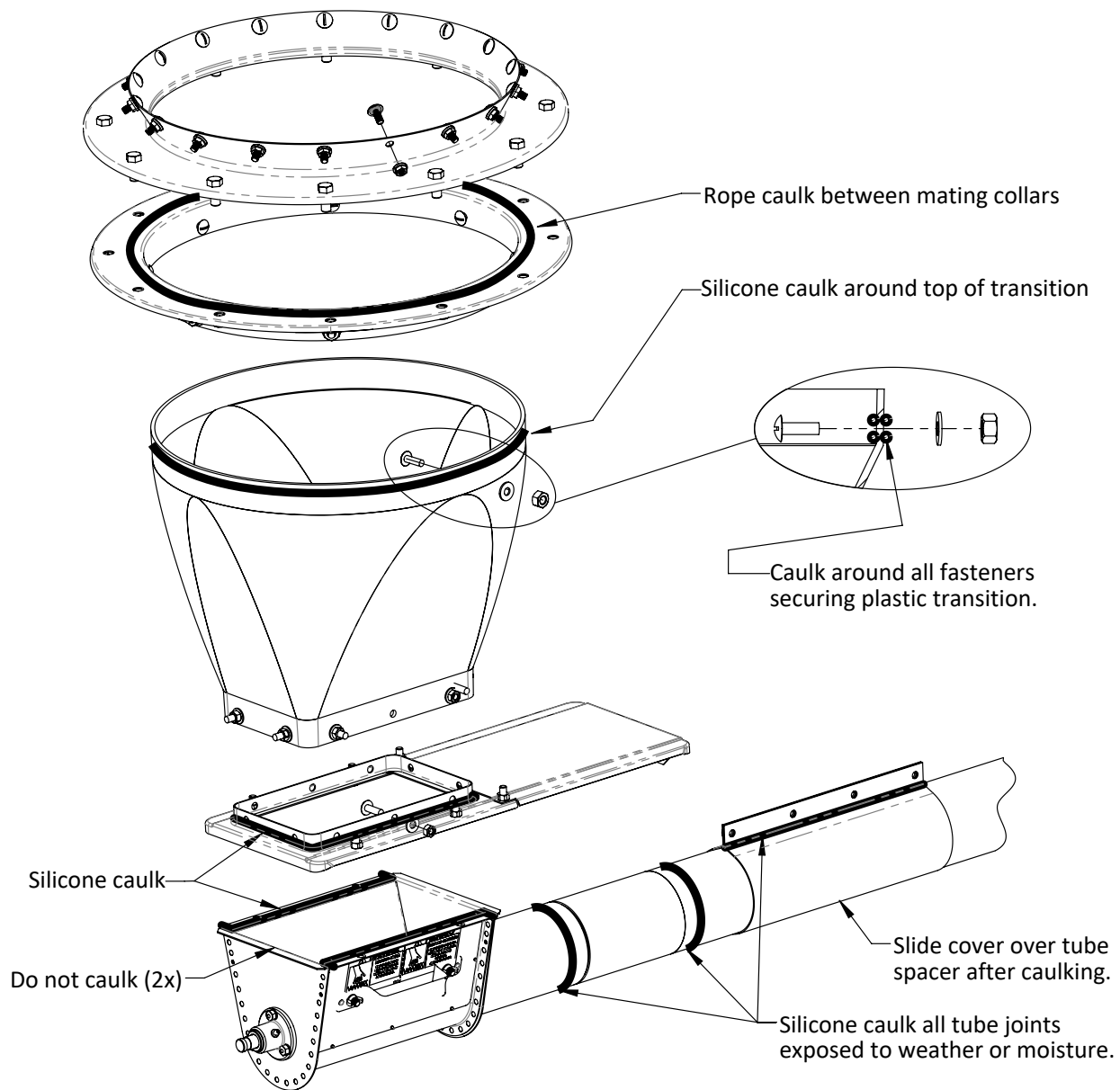


Figure 21

Assembly Instructions: Slide Valve & Hardware Installation - continued

Hardware Instructions:

- All tapered sections of the feed bin should be secured with round head truss bolts.
- It is very important to install the round head inside the bin so feed will flow over. This includes the hardware of the collar to the bin, the bottom collar to the boot transition, and the slide valve to the lower boot (Figure 22, detail views).
- Insert the slide into the transfer plate slot so that it is in working order before bolting the slide shield in place.
- Bolt the lower boot to the transfer plate using the hardware provided (Figure 22).

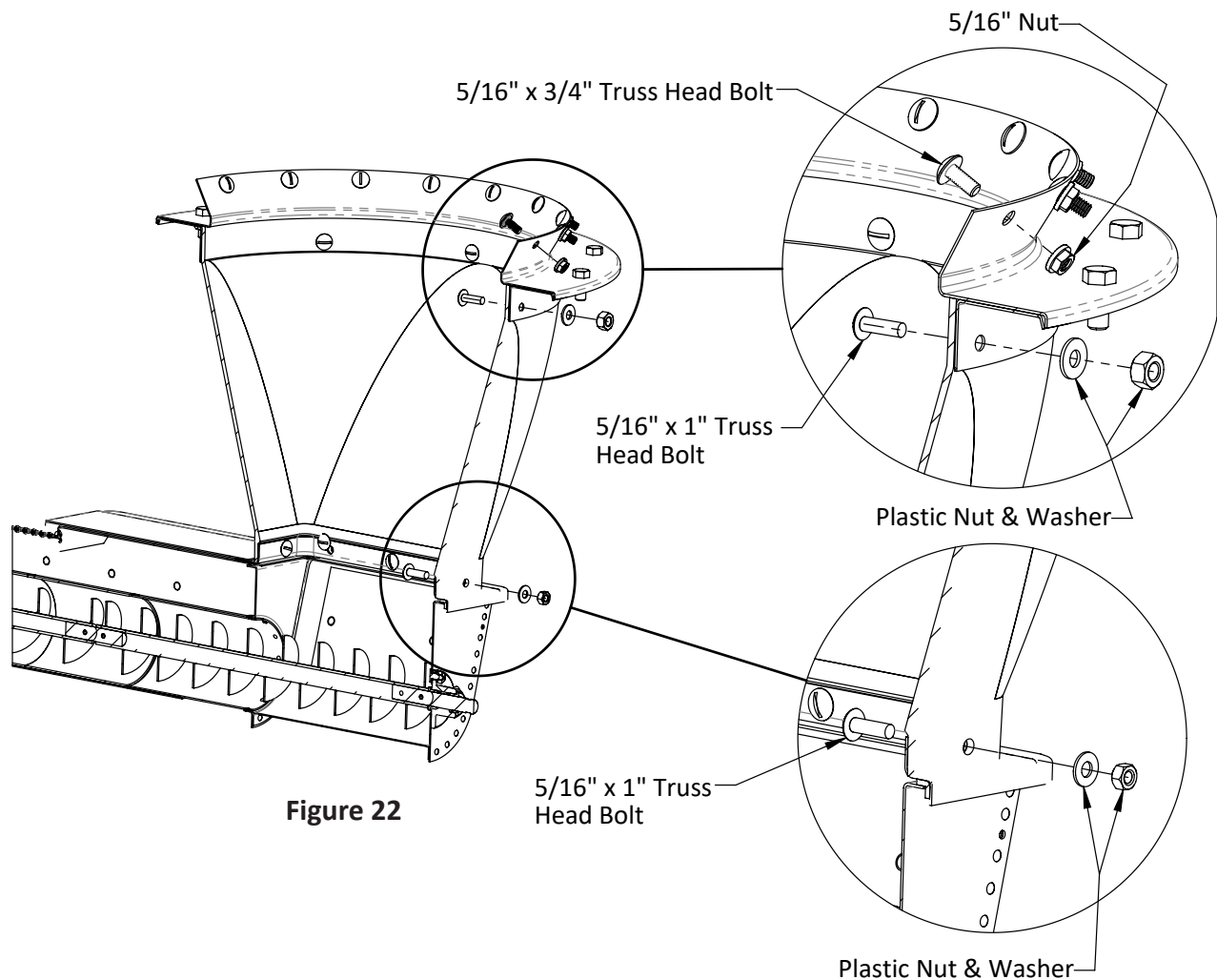


Figure 22

NOTE: Straight, End Boot shown for reference. All hardware and slide valve instructions apply to all boots.

Auger Bracing Assembly Instructions



CAUTION!

The auger **MUST** be supported by a building wall or auger bracing. Failure to do so may result in damage to the bin and equipment.

Supports from ground level may be used in place of hanging type supports. The main objective is to provide adequate auger support of some type to prevent damage to the plastic transition or boot.



CAUTION! Clamp bands must not slip on the auger tube, or damage may result to the transition or boot.

Metric equivalents are in meters and square brackets following the English measurement.

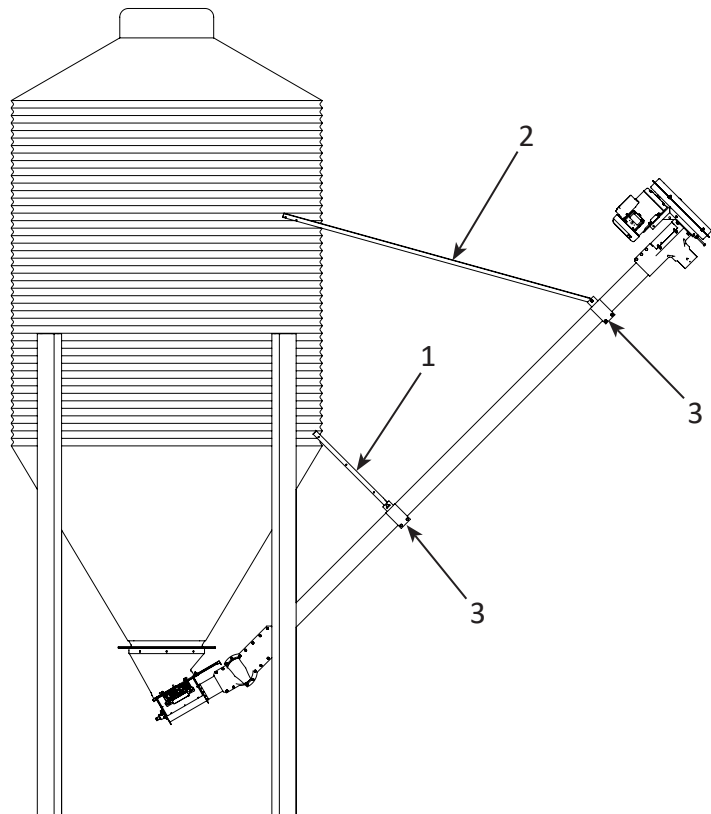
For auger-to-boot connection, refer to page 14.

When attaching auger bracing to the bin wall, put bolt heads on the **inside** of the bin.

Since most augers are supported by buildings or other structures, auger braces are **not supplied** with bins. If auger braces are needed, they must be ordered separately.

Only the lower set of braces (Item 1) must be used with otherwise unsupported augers up to 12 feet [3.657] in length.

For augers over 12 feet [3.657] in length, additional bracing (Item 2) and auger support bands (Item 3) must be used to support the extra length and weight.



ITEM #	PART #	QTY	DESCRIPTION
1	501965	1	AUGER BRACE SET FOR AUGERS UP TO 12' LENGTH
1.1	501911	2	TOP AUGER BRACE, SHORT
1.2	501912	2	BOTTOM AUGER BRACE, SHORT
2	501967	1	AUGER BRACE SET (LONG) FOR AUGERS OVER 12' LENGTH
2.1	501909	2	TOP AUGER BRACE, LONG
2.2	501910	2	BOTTOM AUGER BRACE, LONG
3	704045	1	4" AUGER BRACE BRACKET & CLAMP
	706031	1	6" AUGER BRACE BRACKET & CLAMP

Start-Up and Break-In Information



Before operating augers be sure all personnel are clear!



The operator should be aware of any unusual vibration or noises during the initial start-up and break-in period. All safety shields and guards are to remain in place. Keep hands, feet, and clothing away from rotating and moving parts.

Start Up and Break-In

Before connecting power it is essential to inspect the drive unit and know how and where to shut down the unit in case of an emergency. Have one person in a position where they can monitor the equipment during operation.

Any auger should go through a “break-in” period, whether new or having been idle for a season. The “break-in” period is intended to polish the auger tube to make surfaces smooth. The auger should be run at partial capacity until several hundred bushels of grain have been augered through. After the auger and tube are polished it can be run at full capacity.

Never operate the auger empty for any length of time, as excessive wear will result. If at all possible, do not stop or start the auger while loaded, especially before the auger and tube are well polished, as this may cause the auger to “bind-up.”

Shut Down

Never leave the auger full of material. Before turning off auger for any amount of time, be sure to empty auger tube.

Damage may occur if auger is started when tube is full of material.

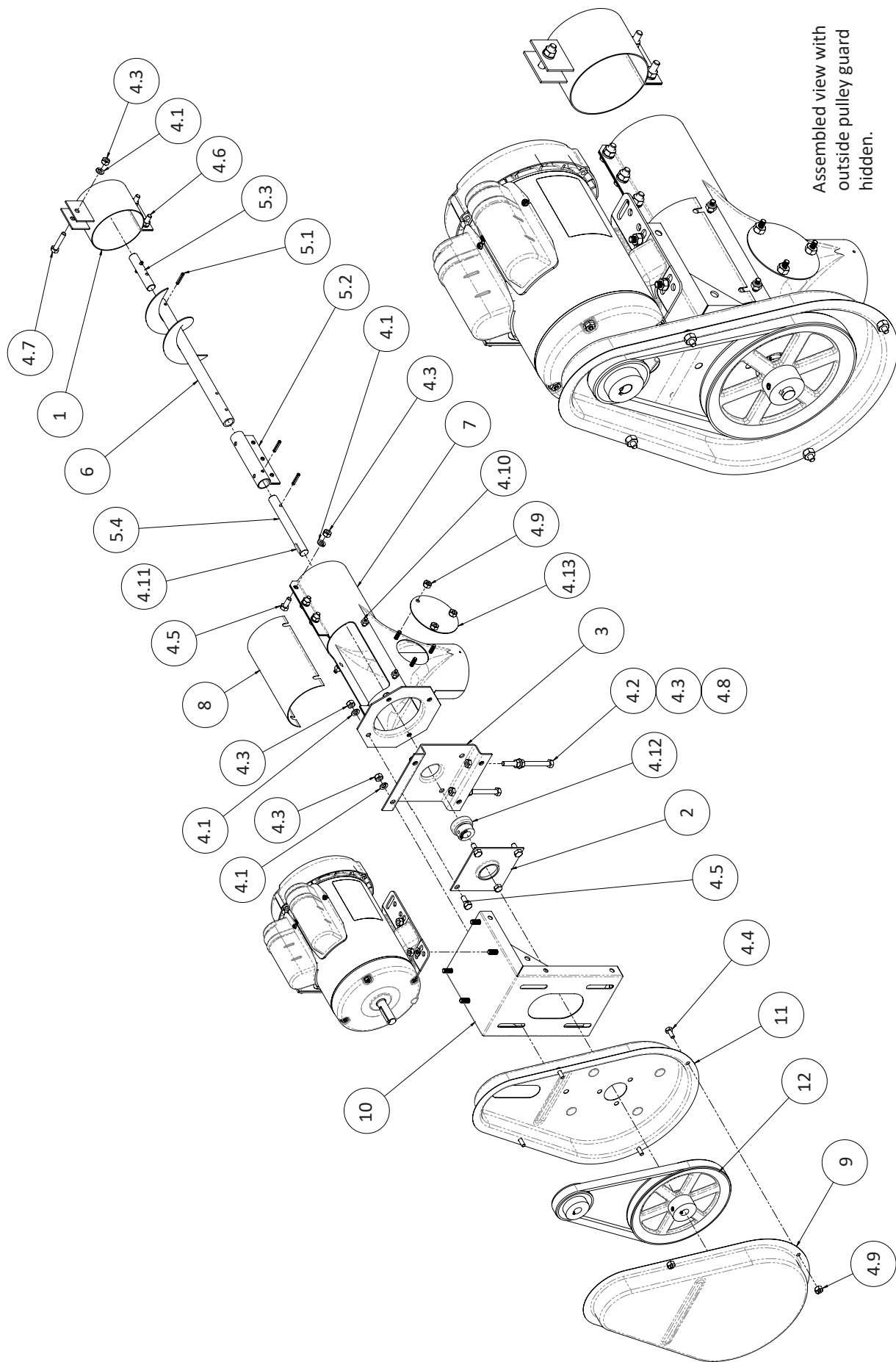
Troubleshooting Guide

Problem	Possible Cause	Corrective Action
Noise/ Vibrating	Flighting may be damaged.	Remove and inspect flighting. Repair or replace if necessary.
	Drive belt may be overtightened or worn.	Check drive belt tension. Adjust drive belt to proper tension, or replace if necessary.
Low Capacity	The auger may not be getting enough grain.	Check that the intake has not bridged over, restricting flow. The exposed flighting at the auger intake should be covered with grain to achieve maximum capacity.
	Belt may be slipping or worn.	Check belt, adjust to proper tension, or replace if necessary.
Auger plugs	If system is new, it may not have been properly broken-in.	Properly break-in system. Operate auger at a much reduced flow rate by restricting intake for several hundred bushels.
	The auger may be getting too much grain, causing “jamming” inside the housing.	Decrease the amount of grain the auger is gathering.
	The motor may be too small or wired improperly.	Reference motor sizing chart.
	The grain may be wet.	Inspect bin and fix leaks.
	The auger may be jammed with foreign material.	Be sure there is no foreign material in the auger, such as sacks, tarp corners, etc.
	The discharge end may be plugged.	Make sure the discharge end of the auger is not plugged. A plug of the discharge end will cause an auger plug.

Parts Pages



Exploded View: 4" Discharge Head/Motor Mount - Single Belt (704272, 704271, 704770, 704269)

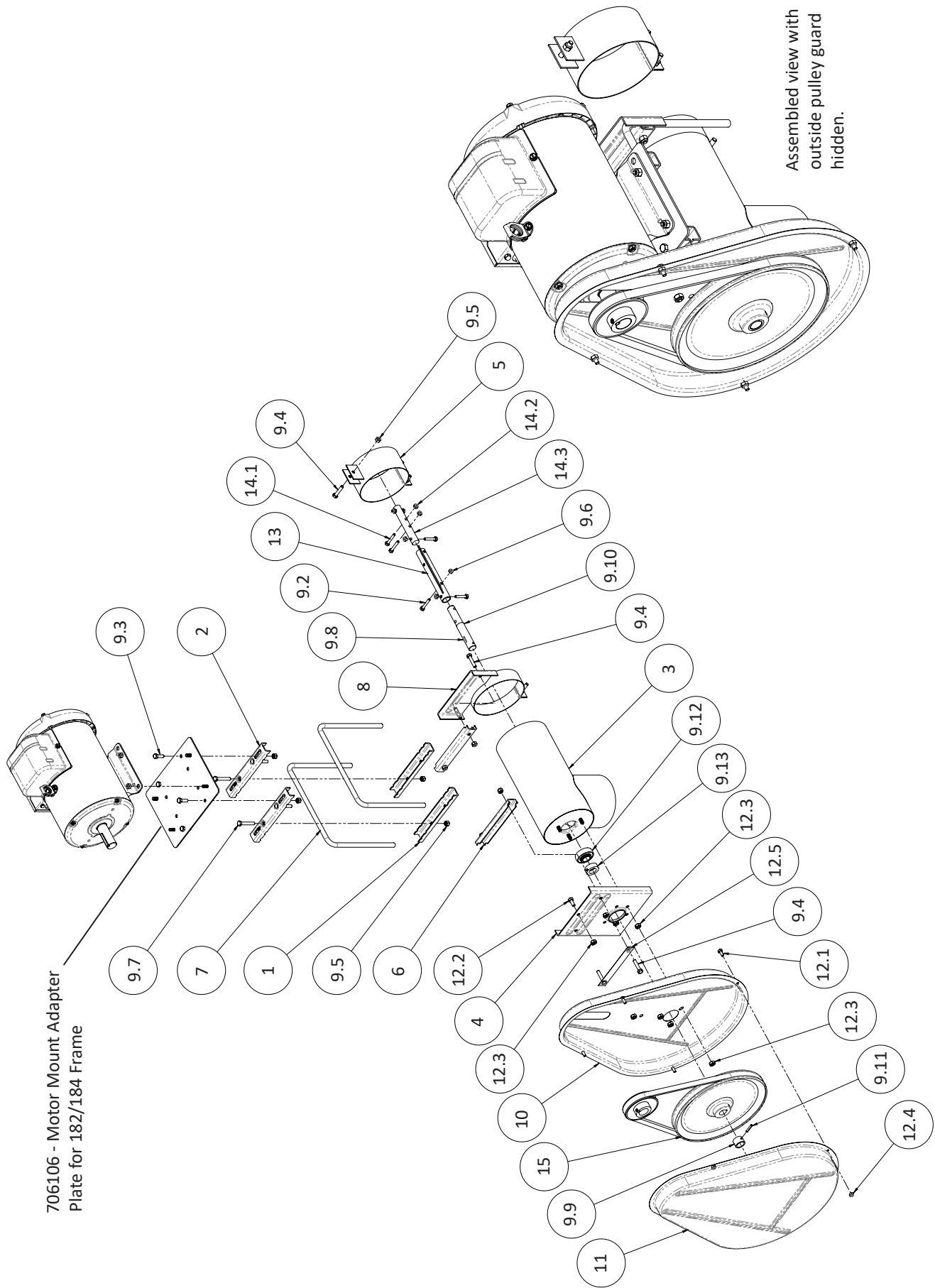


Parts List: 4" Discharge Head/Motor Mount - Single Belt (704272, 704271, 704770, 704269)

ITEM #	PART #	QTY	DESCRIPTION	ITEM #	PART #	QTY	DESCRIPTION
4" DISCHARGE HEAD - COMMON PARTS				6	704292	1	4" DISCHARGE HEAD AUGER ASSEMBLY
1	704045	1	AUGER BRACE BRACKET & CLAMP	7	714143	1	4" DISCHARGE HEAD BODY
2	704256	1	BEARING RETAINER PLATE	8	714147	1	TOP ACCESS COVER
3	704257	1	DRIVE BASE PLATE	704272 - 4" RIGID DISCHARGE HEAD, 600RPM			
4	704260	1	HARDWARE BAG	9	704221	1	OUTSIDE PULLEY GUARD 7.6/8.6"
4.1	010252	14	5/16" SPLIT LOCK WASHER	10	704253	1	4" RIGID AUGER MOTOR MOUNT ASSEMBLY
4.2	010426	2	5/16" FLAT WASHER	11	704259	1	INSIDE PULLEY GUARD
4.3	010603	22	5/16-18 HEX NUT	12	704405	1	PULLEY, 7.75" B PD .625 BORE SINGLE GROOVE
4.4	010616	4	1/4" X 5/8" HEX BOLT	704271 - 4" RIGID DISCHARGE HEAD, 500RPM			
4.5	010643	7	5/16-18 X 3/4" HEX BOLT	9	704221	1	OUTSIDE PULLEY GUARD 7.6/8.6"
4.6	010645	2	5/16" X 1" HEX BOLT	10	704253	1	4" RIGID AUGER MOTOR MOUNT ASSEMBLY
4.7	010648	1	5/16-18 X 1-1/2" HEX BOLT	11	704259	1	INSIDE PULLEY GUARD
4.8	010655	2	5/16-18 X 4" FULL THREAD BOLT	12	704401	1	PULLEY, 8.75" B PD .625 BORE SINGLE GROOVE
4.9	011113	7	1/4-20 HEX JAM NUT	704270 - 4" RIGID DISCHARGE HEAD, 400RPM			
4.10	012793	4	1/4-20 NYLOCK NUT	9	706092	1	OUTSIDE PULLEY GUARD 11.6/14.6"
4.11	704406	1	#9 WOODRUFF KEY	10	701237	1	V-BELT DRIVE MOTOR MOUNT
4.12	704438	1	5/8" BEARING & LOCKING COLLAR	11	704262	1	INSIDE PULLEY GUARD 11.6/14.6"
4.13	713194	1	SWITCH HOLE COVER	12	704402	1	11.6" PD PULLEY 5/8" BORE
5	704274	1	4" IMPELLOR ASSEMBLY (in bag)	704269 - 4" RIGID DISCHARGE HEAD, 300RPM			
5.1	500420	3	3/16" X 1" EXPANSION PIN	9	706092	1	OUTSIDE PULLEY GUARD 11.6/14.6"
5.2	704043	1	4" AUGER IMPELLOR	10	701237	1	V-BELT DRIVE MOTOR MOUNT
5.3	704073	1	4" COUPLING SHAFT, LESS PINS	11	704262	1	INSIDE PULLEY GUARD 11.6/14.6"
5.4	704409	1	4" AUGER DRIVE SHAFT	12	704403	1	14.6" PD PULLEY 5/8" BORE

*Order correct 2.5" motor pulley and V-belt from page 26.

Exploded View: 6" Discharge Head/Motor Mount - Single Belt (706165, 706166, 706171, 706172)



Parts List: 6" Discharge Head/Motor Mount - Single Belt (706165, 706166, 706171, 706172)

ITEM #	PART #	QTY	DESCRIPTION
6" DISCHARGE HEAD - COMMON PARTS			
1	704033	2	MOTOR MOUNT BOTTOM CHANNEL
2	704062	2	MOTOR MOUNT TOP CHANNEL
3	706002	1	6" X 90 DEGREE DISCHARGE HEAD
4	706021	1	OUTSIDE BEARING RETAINER PLATE
5	706031	1	AUGER BRACE BRACKET & CLAMP
6	706055	2	VERTICAL CLAMP CHANNEL
7	706056	2	OVERHEAD MOTOR MOUNT RAIL
8	706068	1	REAR SUPPORT CLAMP
9	706086	1	6" DISCHARGE HEAD HARDWARE BAG
9.1	010252	3	5/16" SPLIT LOCK WASHER
9.2	010623	2	1/4" X 1-1/2" HEX BOLT
9.3	010645	4	5/16" X 1" HEX BOLT
9.4	010648	6	5/16-18 X 1-1/2" HEX BOLT
9.5	012789	22	5/16-18 NYLOCK NUT
9.6	012793	2	1/4-20 NYLOCK NUT
9.7	690117	4	5/16-18 X 2" HEX BOLT
9.8	704406	1	#9 WOODRUFF KEY
9.9	706060	1	SHEAVE RETAINING COLLAR
9.10	706403	1	6" AUGER DRIVE SHAFT
9.11	706405	1	3/16" X 1-1/8" EXPANSION PIN
9.12	706414	1	7/8" BEARING
9.13	706415	1	7/8" LOCKING COLLAR

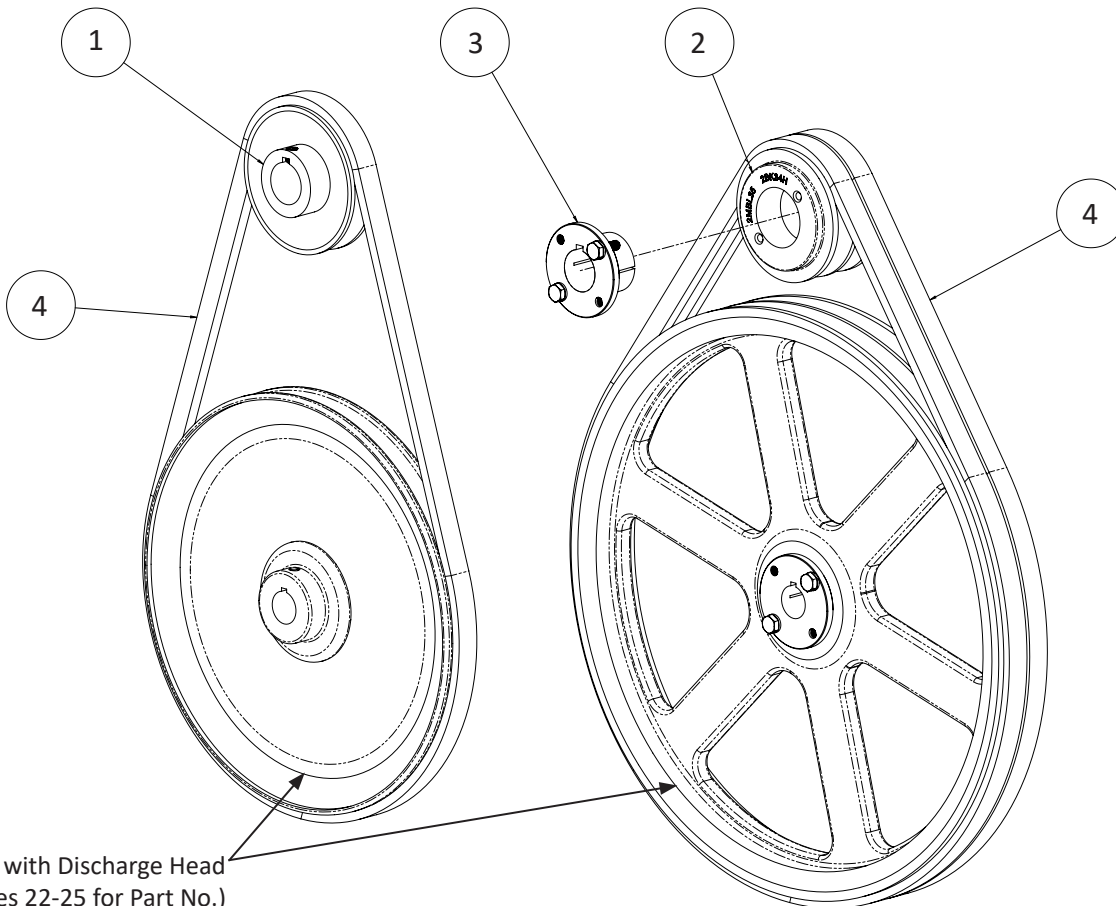
ITEM #	PART #	QTY	DESCRIPTION
6" DISCHARGE HEAD - COMMON PARTS			
10	706091	1	INSIDE PULLEY GUARD
11	706092	1	OUTSIDE PULLEY GUARD 11.6/14.6"
12	706093	1	6" DH PULLEY GUARD HARDWARE BAG
12.1	010616	4	1/4" X 5/8" HEX BOLT
12.2	010643	1	5/16-18 X 3/4" HEX BOLT
12.3	011114	8	5/16-18 HEX NUT
12.4	012793	4	1/4-20 NYLOCK NUT
12.5	706090	1	PULLEY GUARD BOLT RETAINER PLATE
13	706162	1	6" IMPELLOR ASSEMBLY
14	706164	1	6" COUPLING SHAFT WITH HARDWARE
14.1	010623	4	1/4" X 1-1/2" HEX BOLT
14.2	012793	4	1/4-20 NYLOCK NUT
14.3	706407	1	6" COUPLING SHAFT, LESS BOLTS
706165 - 6" DISCHARGE HEAD, SINGLE GROOVE, 600RPM			
15	706400	1	PULLEY, 10.6" B PD .875 BORE 1 GROOVE
706166 - 6" DISCHARGE HEAD, SINGLE GROOVE, 400RPM			
15	706408	2	PULLEY, 14.6" B PD .875 BORE 1 GROOVE
706171 - 6" DISCHARGE HEAD, DOUBLE GROOVE, 600RPM			
15	920426	1	PULLEY, 10.75" B PD 2 GROOVE BUSHING
16	920428	1	SPLIT TAPER BUSHING, .875" BORE
706172 - 6" DISCHARGE HEAD, DOUBLE GROOVE, 400RPM			
15	920427	2	PULLEY, 15.75" B PD 2 GROOVE BUSHING
16	920428	1	SPLIT TAPER BUSHING, .875" BORE

*Order correct 3.6" motor pulley and V-belt from page 26.



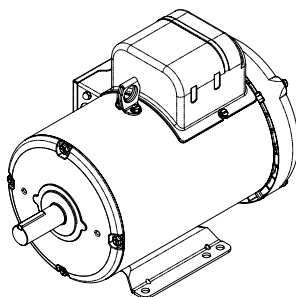
Motor Pulleys, Bushings & V-Belts

ITEM #	PART #	DESCRIPTION
SINGLE GROOVE MOTOR PULLEYS		
1	920410	2.5" SINGLE GROOVE "B" MOTOR PULLEY - 5/8" BORE (4" RIGID AUGERS)
	920411	3.6" SINGLE GROOVE "B" MOTOR PULLEY - 5/8" BORE (6" RIGID AUGERS)
	920416	3.6" SINGLE GROOVE "B" MOTOR PULLEY - 7/8" BORE (6" RIGID AUGERS)
	920412	3.6" SINGLE GROOVE "B" MOTOR PULLEY - 1-1/8" BORE (6" RIGID AUGERS)
DOUBLE GROOVE MOTOR PULLEYS		
2	920413	3.6" DOUBLE GROOVE "B" MOTOR BUSHED ID PULLEY (6" RIGID AUGERS)
BUSHINGS (for Double Groove Motor Pulleys)		
3	920414	5/8" BORE SPLIT TAPER BUSHING FOR DOUBLE GROOVE PULLEY
	920428	7/8" BORE SPLIT TAPER BUSHING FOR DOUBLE GROOVE PULLEY
	920415	1-1/8" BORE SPLIT TAPER BUSHING FOR DOUBLE GROOVE PULLEY
V-BELTS		
4	920421	36" O.L. "B" SECTION V-BELT - 4" AUGER AT 600 RPM
	920429	38" O.L. "B" SECTION V-BELT - 4" AUGER AT 500 RPM
	920424	48" O.L. "B" SECTION V-BELT - 4" AUGER AT 400 RPM - 6" AUGER AT 600 RPM
	920425	55" O.L. "B" SECTION V-BELT - 4" AUGER AT 300 RPM - 6" AUGER AT 400 RPM



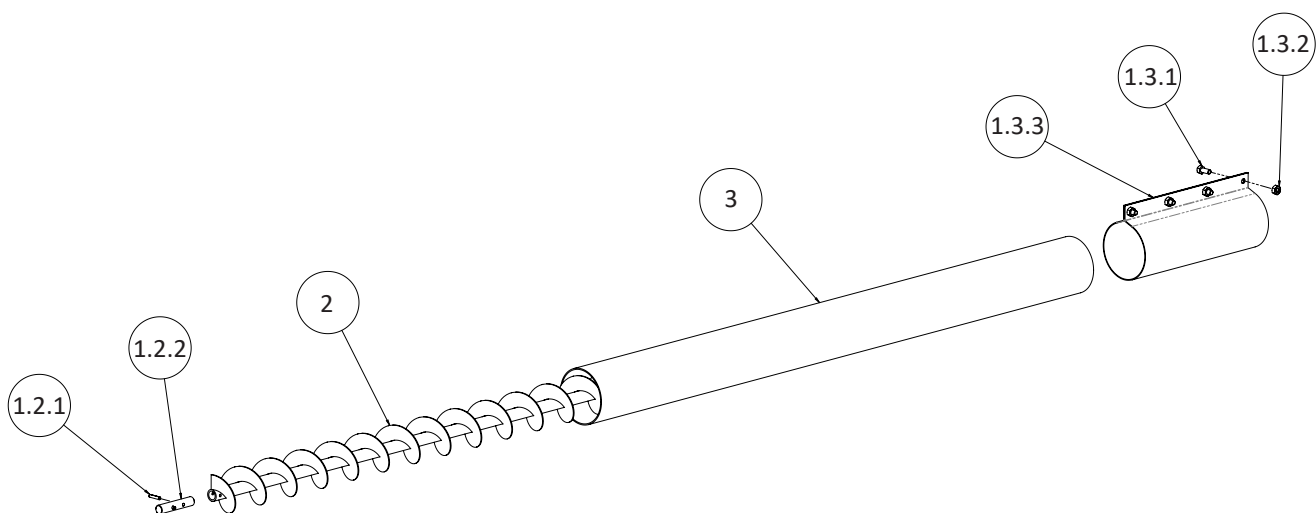
Farm Duty Motors for Rigid Augers

PART #	DESCRIPTION
1PH 60HZ MOTORS	
920401	.50 HP FARM DUTY MOTOR - 110/220V 1PH 60HZ - 5/8" SHAFT
920402	.75 HP FARM DUTY MOTOR - 110/220V 1PH 60HZ - 5/8" SHAFT
920403	1.0 HP FARM DUTY MOTOR - 110/220V 1PH 60HZ - 5/8" SHAFT
920404	1.5 HP FARM DUTY MOTOR - 110/220V 1PH 60HZ - 5/8" SHAFT
920405	2.0 HP FARM DUTY MOTOR - 110/220V 1PH 60HZ - 7/8" SHAFT
920406	3.0 HP FARM DUTY MOTOR - 110/220V 1PH 60HZ - 1-1/8" SHAFT
920407	5.0 HP FARM DUTY MOTOR - 110/220V 1PH 60HZ - 1-1/8" SHAFT
3PH 60HZ MOTORS	
920441	.50 HP FARM DUTY MOTOR - 230/460V 3PH 60HZ - 5/8" SHAFT
920442	.75 HP FARM DUTY MOTOR - 230/460V 3PH 60HZ - 5/8" SHAFT
920443	1.0 HP FARM DUTY MOTOR - 230/460V 3PH 60HZ - 5/8" SHAFT
920444	1.5 HP FARM DUTY MOTOR - 230/460V 3PH 60HZ - 5/8" SHAFT
920445	2.0 HP FARM DUTY MOTOR - 208-230/460V 3PH 60HZ - 7/8" SHAFT
920446	3.0 HP FARM DUTY MOTOR - 230/460V 3PH 60HZ - 1-1/8" SHAFT
920447	5.0 HP FARM DUTY MOTOR - 230/460V 3PH 60HZ - 1-1/8" SHAFT
1PH 50HZ MOTORS	
920551	.50 HP FARM DUTY MOTOR - 110/220V 1PH 50HZ - 5/8" SHAFT
920552	.75 HP FARM DUTY MOTOR - 110/220V 1PH 50HZ - 5/8" SHAFT
920553	1.0 HP FARM DUTY MOTOR - 110/220V 1PH 50HZ - 5/8" SHAFT
920554	1.5 HP FARM DUTY MOTOR - 110/220V 1PH 50HZ - 5/8" SHAFT
920555	2.0 HP FARM DUTY MOTOR - 220V 1PH 50HZ - 1-1/8" SHAFT
920556	3.0 HP FARM DUTY MOTOR - 220V 1PH 50HZ - 1-1/8" SHAFT
920557	5.0 HP FARM DUTY MOTOR - 220V 1PH 50HZ - 1-1/8" SHAFT
3PH 50HZ MOTORS	
920561	.50 HP FARM DUTY MOTOR - 230/460: 190/380V 3PH 50HZ - 5/8" SHAFT
920562	.75 HP FARM DUTY MOTOR - 208-230/460: 190/380V 3PH 50HZ - 5/8" SHAFT
920563	1.0 HP FARM DUTY MOTOR - 208-230/460: 190/380V 3PH 50HZ - 5/8" SHAFT
920564	1.5 HP FARM DUTY MOTOR - 208-230/460: 190/380V 3PH 50HZ - 5/8" SHAFT
920565	2.0 HP FARM DUTY MOTOR - 208-230/460: 190/380V 3PH 50HZ - 7/8" SHAFT
920566	3.0 HP FARM DUTY MOTOR - 208-230/460: 190/380V 3PH 50HZ - 1-1/8" SHAFT
920567	5.0 HP FARM DUTY MOTOR - 208-230/460: 190/380V 3PH 50HZ - 1-1/8" SHAFT



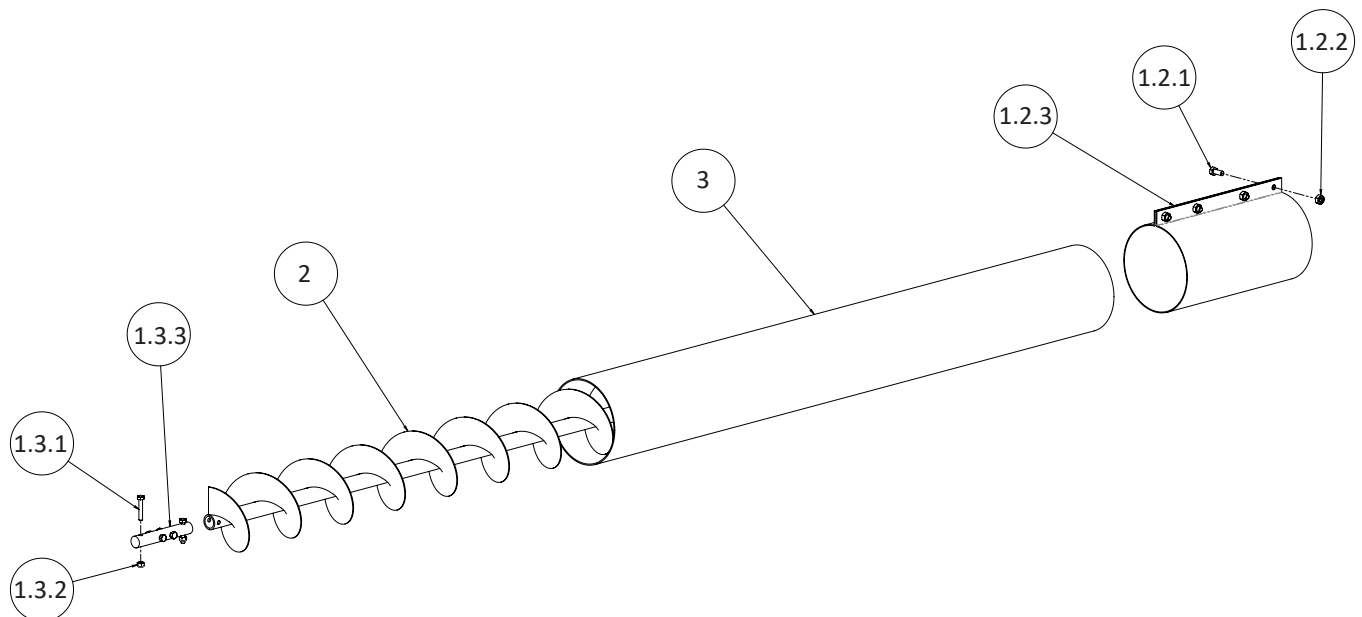
4" Extension Auger & Tube Assemblies (704284, 704211, 704212, 704213, 704214)

ITEM #	PART #	QTY	DESCRIPTION
4" EXTENSION AUGER & TUBE ASSEMBLIES - COMMON PARTS			
1	704285	1	4" COUPLING SHAFT & TUBE JOINER
1.2	704278	1	4" COUPLING SHAFT WITH PINS
1.2.1	500420	2	3/16" X 1" EXPANSION PIN
1.2.2	704073	1	4" COUPLING SHAFT LESS PINS
1.3	704287	1	4" TUBE JOINER WITH HARDWARE
1.3.1	010643	4	5/16-18 X 3/4" HEX BOLT
1.3.2	011114	4	5/16-18 HEAVY HEX NUT
1.3.3	704286	1	4" TUBE COUPLER, GALVANIZED
704284 - 4" X 4' EXTENSION AUGER & TUBE ASSEMBLY			
2	704281	1	4" X 4' AUGER ONLY
3	704441	1	4" X 4' GALVANIZED TUBE ONLY
704211- 4" X 7' EXTENSION AUGER & TUBE ASSEMBLY			
2	704069	1	4" X 7' AUGER ONLY
3	704411	1	4" X 7' GALVANIZED TUBE ONLY
704212 - 4" X 11' EXTENSION AUGER & TUBE ASSEMBLY			
2	704070	1	4" X 11' AUGER ONLY
3	704412	1	4" X 11' GALVANIZED TUBE ONLY
704213- 4" X 15' EXTENSION AUGER & TUBE ASSEMBLY			
2	704071	1	4" X 15' AUGER ONLY
3	704413	1	4" X 15' GALVANIZED TUBE ONLY
704214 - 4" X 19' EXTENSION AUGER & TUBE ASSEMBLY			
2	704072	1	4" X 19' AUGER ONLY
3	704414	1	4" X 19' GALVANIZED TUBE ONLY



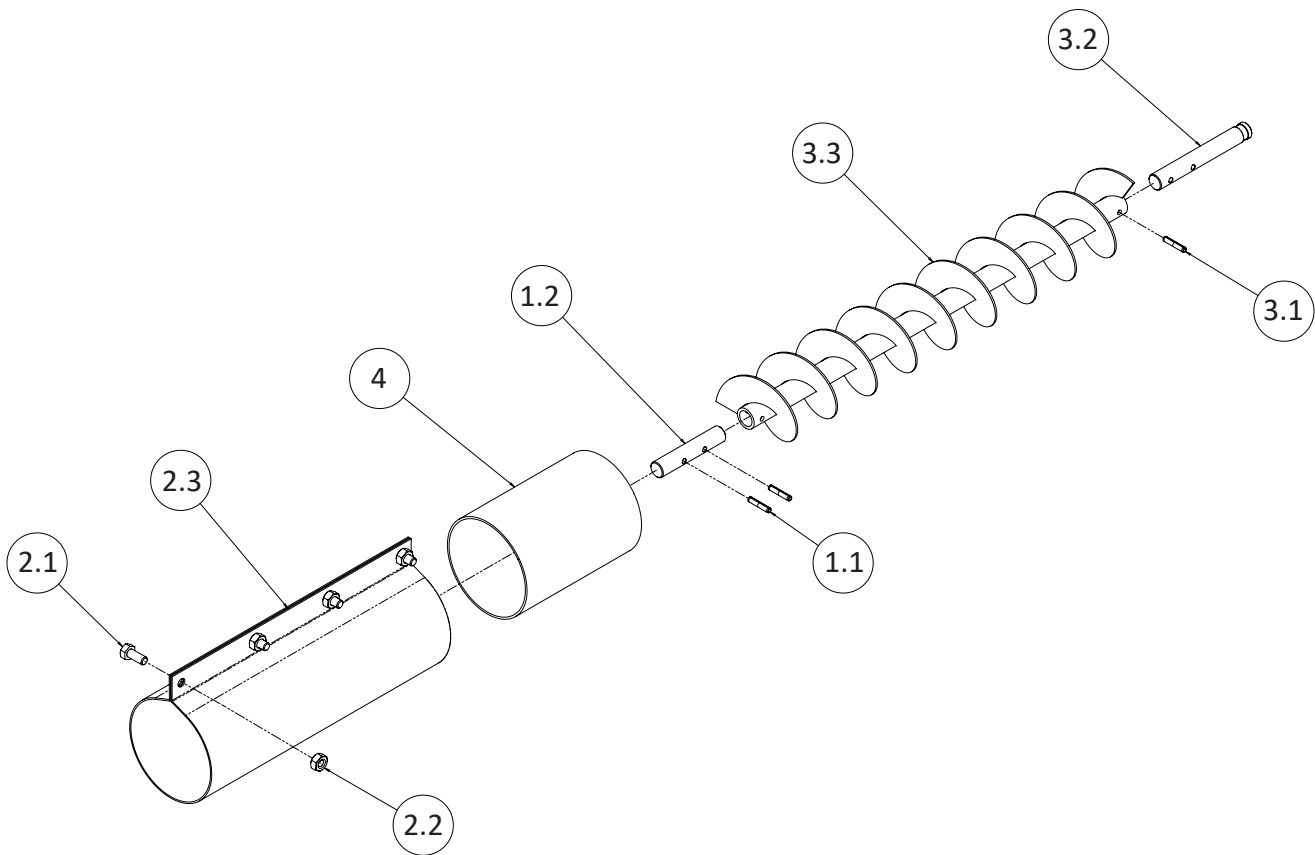
6" Extension Auger & Tube Assemblies (706125, 706139, 706135, 706140)

ITEM #	PART #	QTY	DESCRIPTION
6" EXTENSION AUGER & TUBE ASSEMBLIES - COMMON PARTS			
1	706169	1	6" COUPLING SHAFT & TUBE JOINER
1.2	706084	1	6" TUBE JOINER WITH HARDWARE
1.2.1	010643	4	5/16-18 X 3/4" HEX BOLT
1.2.2	011114	4	5/16-18 HEAVY HEX NUT
1.2.3	706028	1	6" TUBE JOINER
1.3	706164	1	6" COUPLING SHAFT WITH HARDWARE
1.3.1	010623	4	1/4" X 1-1/2" HEX BOLT
1.3.2	012793	4	1/4-20 NYLOCK NUT
1.3.3	706407	1	6" COUPLING SHAFT LESS BOLTS
706125 - 6" X 5' EXTENSION AUGER & TUBE ASSEMBLY			
2	706126	1	6" X 5' AUGER ONLY
3	706127	1	6" X 5' GALVANIZED TUBE ONLY
706130 - 6" X 10' EXTENSION AUGER & TUBE ASSEMBLY			
2	706131	1	6" X 10' AUGER ONLY
3	706411	1	6" X 10' GALVANIZED TUBE ONLY
706135 - 6" X 15' EXTENSION AUGER & TUBE ASSEMBLY			
2	706136	1	6" X 15' AUGER ONLY
3	706410	1	6" X 15' GALVANIZED TUBE ONLY
706140 - 6" X 20' EXTENSION AUGER & TUBE ASSEMBLY			
2	706141	1	6" X 20' AUGER ONLY
3	706409	1	6" X 20' GALVANIZED TUBE ONLY



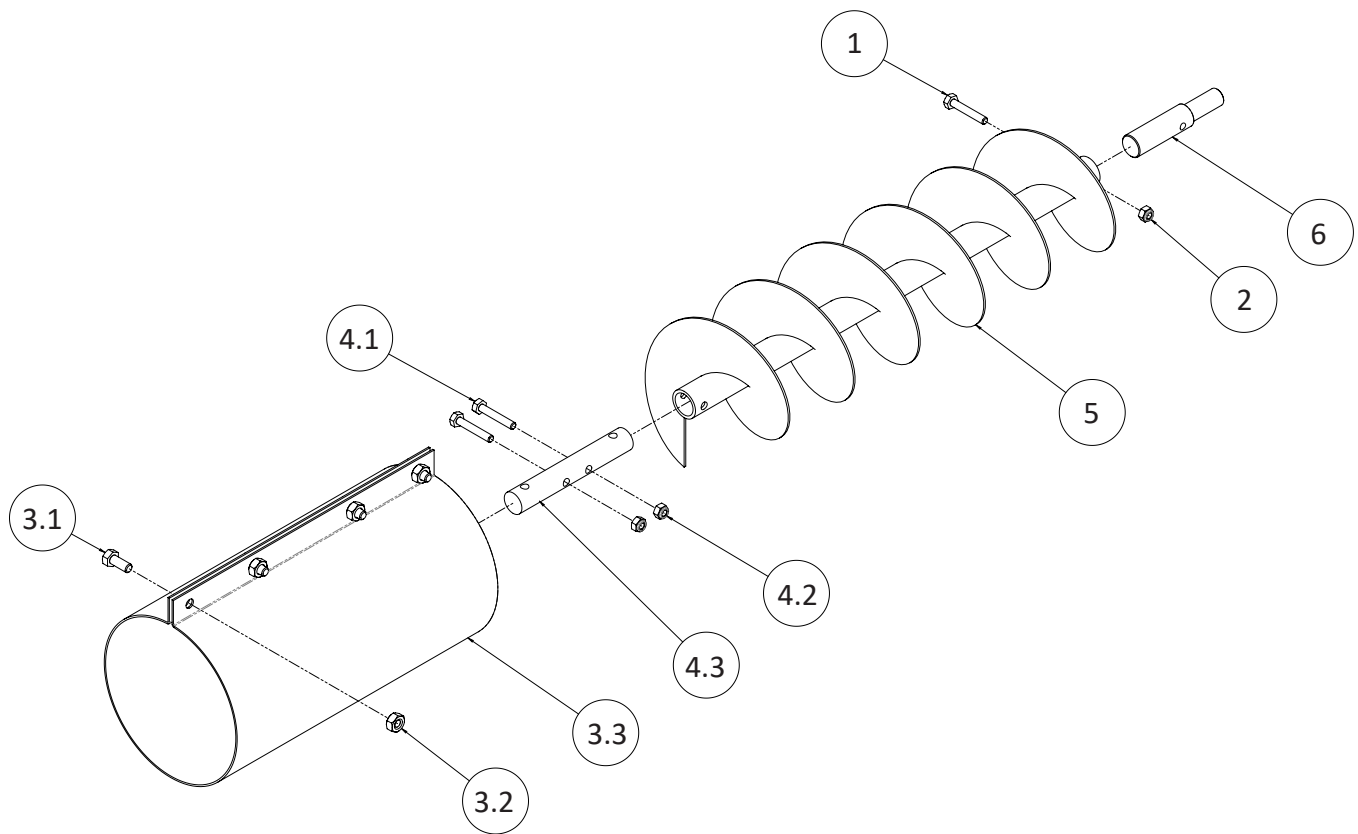
4" Straight-Out Non-Adjustable Auger Connection Kit (704295)

ITEM #	PART #	QTY	DESCRIPTION
4" STRAIGHT-OUT NON-ADJUSTABLE AUGER CONNECTION KIT - 704295 PARTS LIST			
1	704278	1	4" COUPLING SHAFT WITH PINS
1.1	500420	2	3/16" X 1" EXPANSION PIN
1.2	704073	1	4" COUPLING SHAFT LESS PINS
2	704287	1	4" TUBE JOINER WITH HARDWARE
2.1	010643	4	5/16-18 X 3/4" HEX BOLT
2.2	011114	4	5/16-18 HEX NUT
2.3	704286	1	TUBE COUPLER, 4"OD, STRAIGHT-OUT
3	704288	1	4" BOOT AUGER LESS U-JOINT
3.1	500420	1	3/16" X 1" EXPANSION PIN
3.2	713415	1	BOOT AUGER SHAFT
3.3	724250	1	4" SHORT BOOT AUGER, WELDED
4	704308	1	5-3/4" STRAIGHT-OUT TUBE SPACER



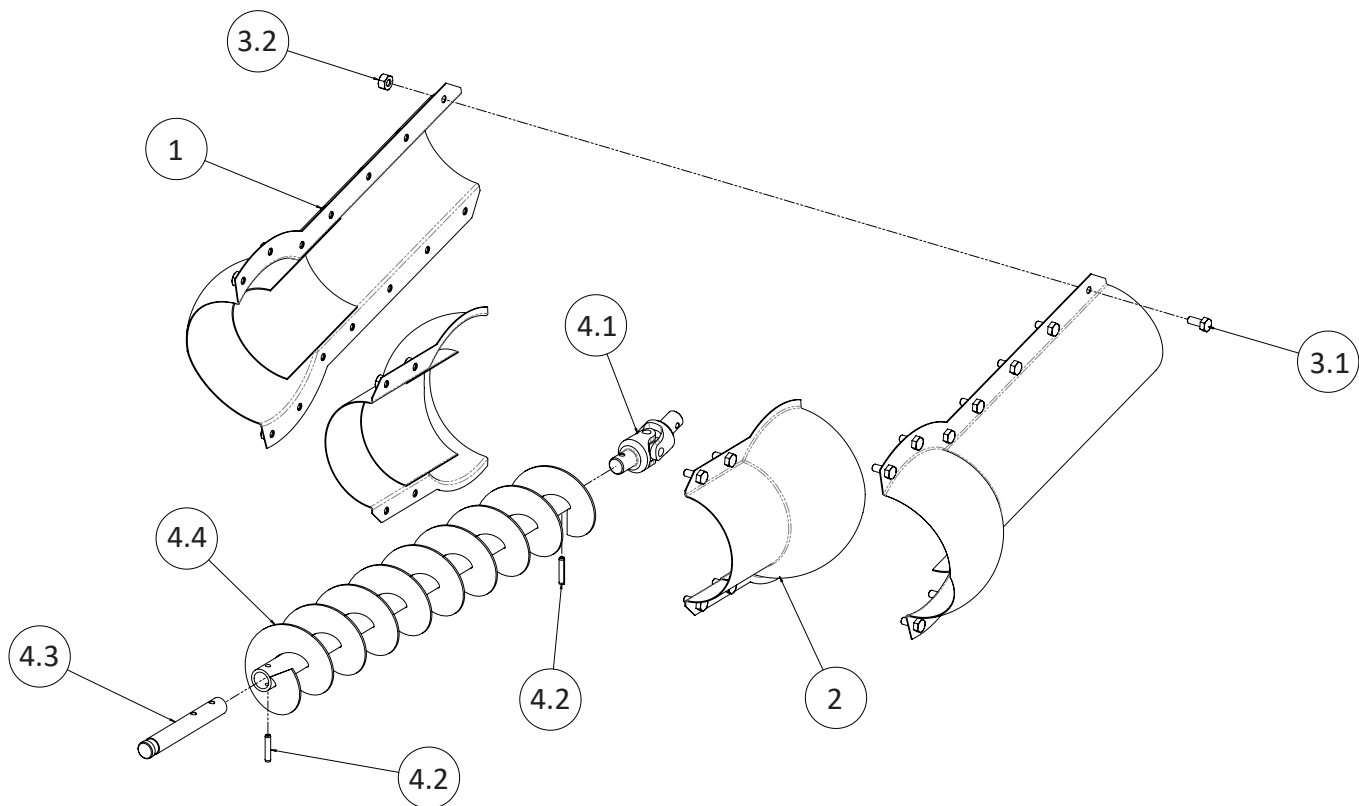
6" Straight-Out Non-Adjustable Auger Connection Kit (706295)

ITEM #	PART #	QTY	DESCRIPTION
6" NON-ADJUSTABLE AUGER CONNECTION KIT - 706295 PARTS LIST			
1	010623	1	1/4" X 1-1/2" HEX BOLT
2	012793	1	1/4-20 NYLOCK NUT
3	706084	1	6" TUBE JOINER WITH HARDWARE
3.1	010643	4	5/16-18 X 3/4" HEX BOLT
3.2	011114	4	5/16-18 HEX NUT
3.3	706028	1	6" TUBE JOINER
4	706164	1	6" COUPLING SHAFT WITH HARDWARE
4.1	010623	4	1/4" X 1-1/2" HEX BOLT
4.2	012793	4	1/4-20 NYLOCK NUT
4.3	706407	1	6" COUPLING SHAFT LESS BOLTS
5	706197	1	18-5/8" BOOT AUGER
6	706406	1	6" BOOT STUB SHAFT



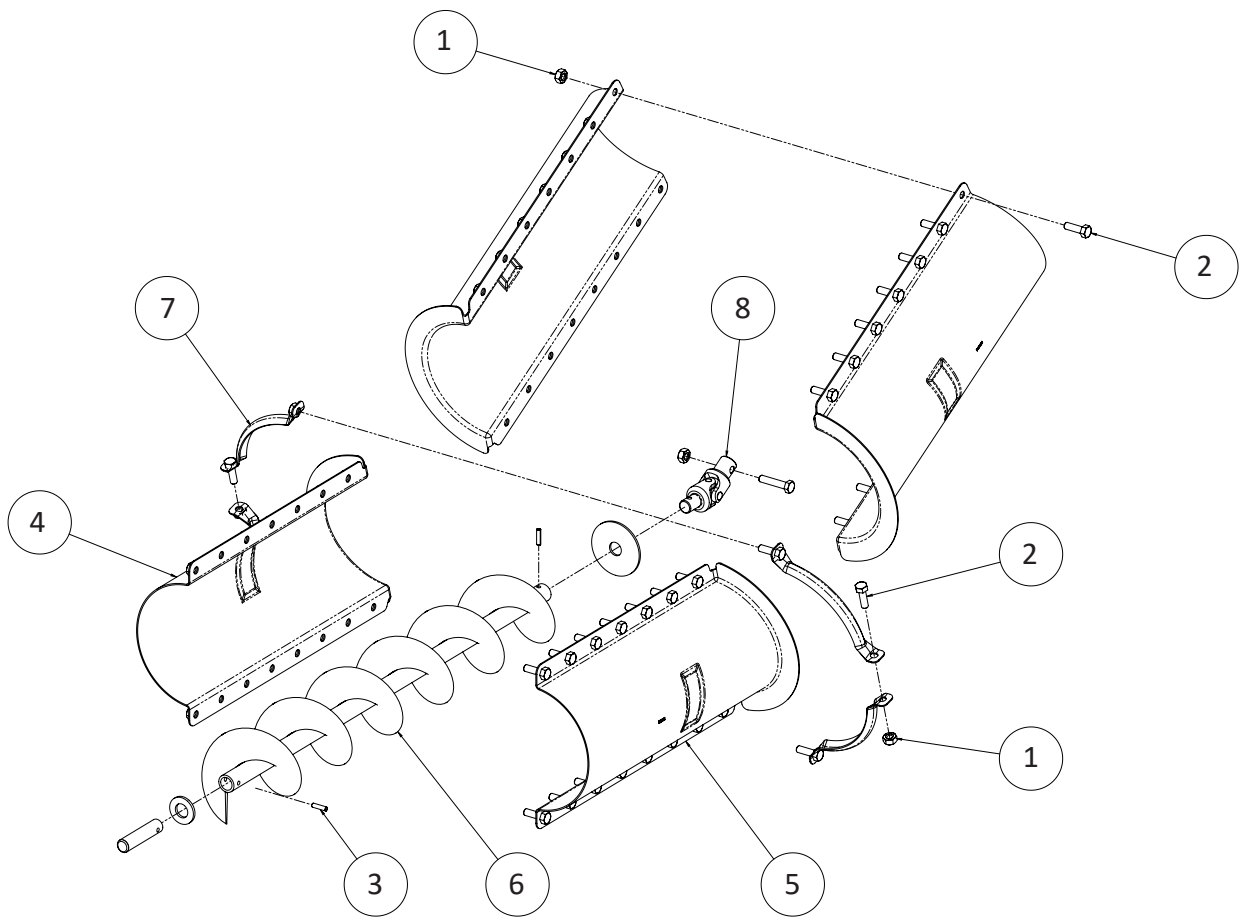
4" Universal Parts Adjustable Auger Connection Kit (704294)

ITEM #	PART #	QTY	DESCRIPTION
4" UNIVERSAL PARTS ADJUSTABLE AUGER CONNECTION KIT - 704294 PARTS LIST			
1	501311	1	LONG BALL JOINT SECTION
2	501922	1	SHORT BALL JOINT SECTION
3	704242	1	HARDWARE BAG
3.1	010616	22	1/4" X 5/8" HEX BOLT
3.2	011113	22	1/4-20 HEX JAM NUT
4	724249	1	4" BOOT AUGER (16")
4.1	500419	1	UNIVERSAL JOINT LESS PINS
4.2	500420	3	3/16" X 1" EXPANSION PIN
4.3	713415	1	BOOT AUGER SHAFT
4.4	724250	1	4" SHORT BOOT AUGER, WELDED



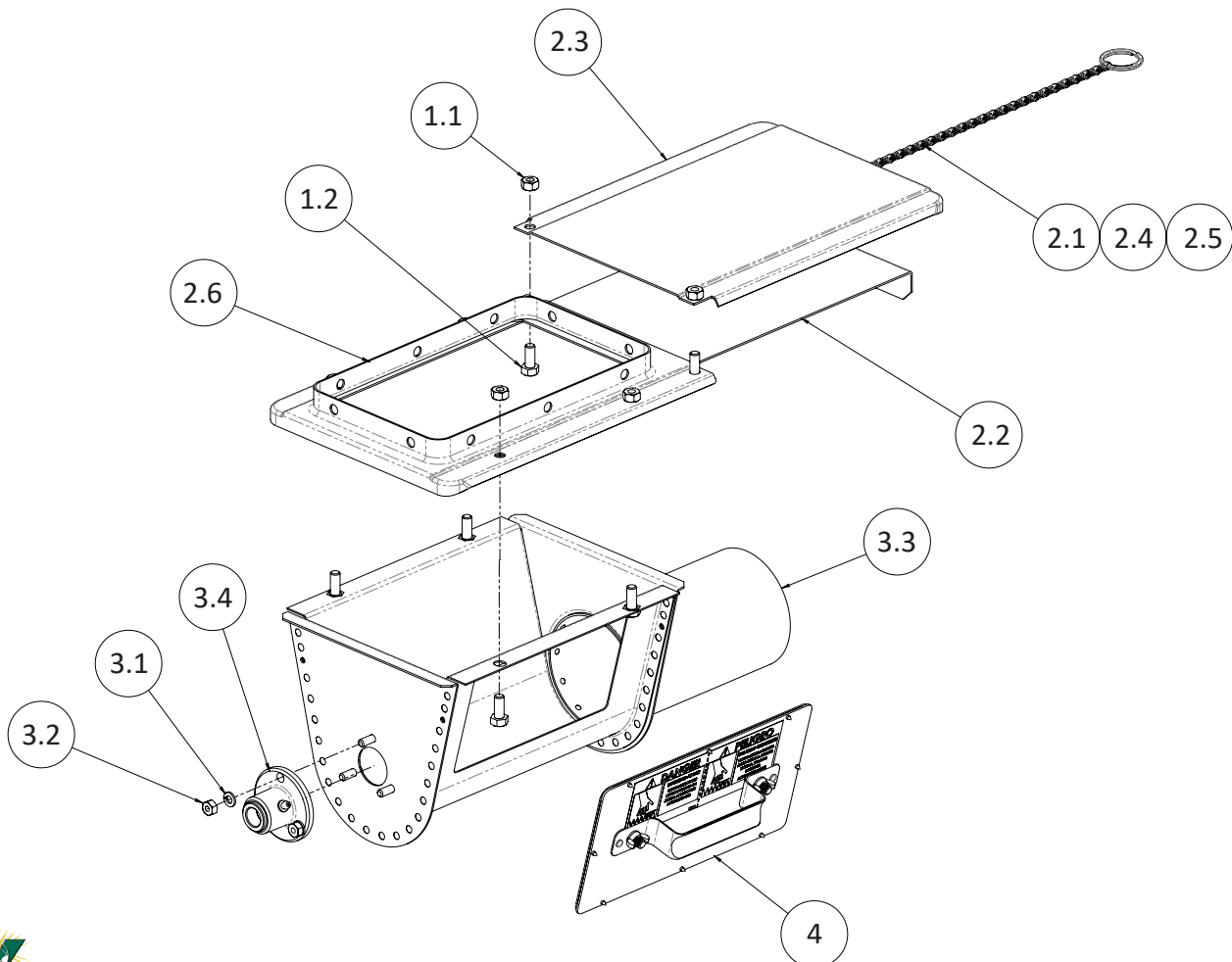
6" Universal Parts Adjustable Auger Connection Kit (706294)

ITEM #	PART #	QTY	DESCRIPTION
6" UNIVERSAL PARTS ADJUSTABLE AUGER CONNECTION KIT - 706294 PARTS LIST			
1	010643	18	5/16-18 X 3/4" HEX BOLT
2	010645	18	5/16" X 1" HEX BOLT
3	706405	2	3/16" X 1-1/8" EXPANSION PIN
4	706444	2	6" RIGHT-HALF COUPLER
5	706445	2	6" LEFT-HALF COUPLER
6	706446	1	6" AUGER TAIL ASSEMBLY
7	706447	4	FLANGE CLAMP, LESS HARDWARE
8	706448	1	6" UNIVERSAL JOINT



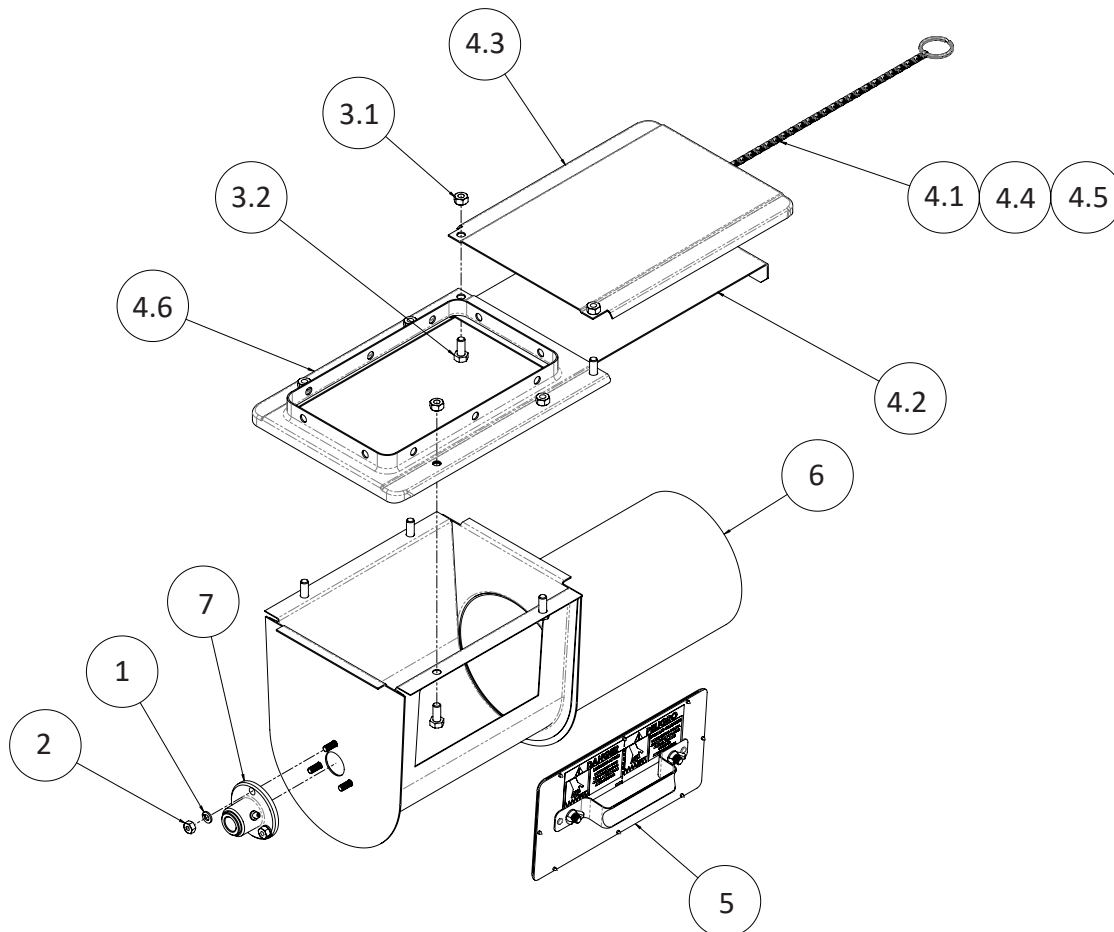
4" Rigid Auger Lower Boot With Slide Valve (704290)

ITEM #	PART #	QTY	DESCRIPTION
4" RIGID AUGER LOWER BOOT WITH SLIDE VALVE - 704290 PARTS LIST			
1	500494	1	SLIDE VALVE HARDWARE BAG
1.1	010603	6	5/16-18 HEX NUT
1.2	010643	6	5/16-18 X 3/4" HEX BOLT
2	500495	1	16" SLIDE VALVE
2.1	012660	1	7/64" X 3/4" COTTER PIN
2.2	500301	1	SLIDE PLATE
2.3	500302	1	SLIDE SHIELD
2.4	500305	1	12" CHAIN
2.5	500306	1	CHAIN RING
2.6	500309	1	TRANSFER PLATE ASSEMBLY
3	704296	1	4" RIGID AUGER BOOT ASSEMBLY
3.1	010251	3	1/4" SPLIT LOCK WASHER
3.2	010602	3	1/4-20 HEX NUT
3.3	704298	1	4" RIGID AUGER LOWER BOOT WELDMENT
3.4	720490	1	ALUMINUM BEARING ASSEMBLY
4	704303	1	BOOT DOOR ASSEMBLY



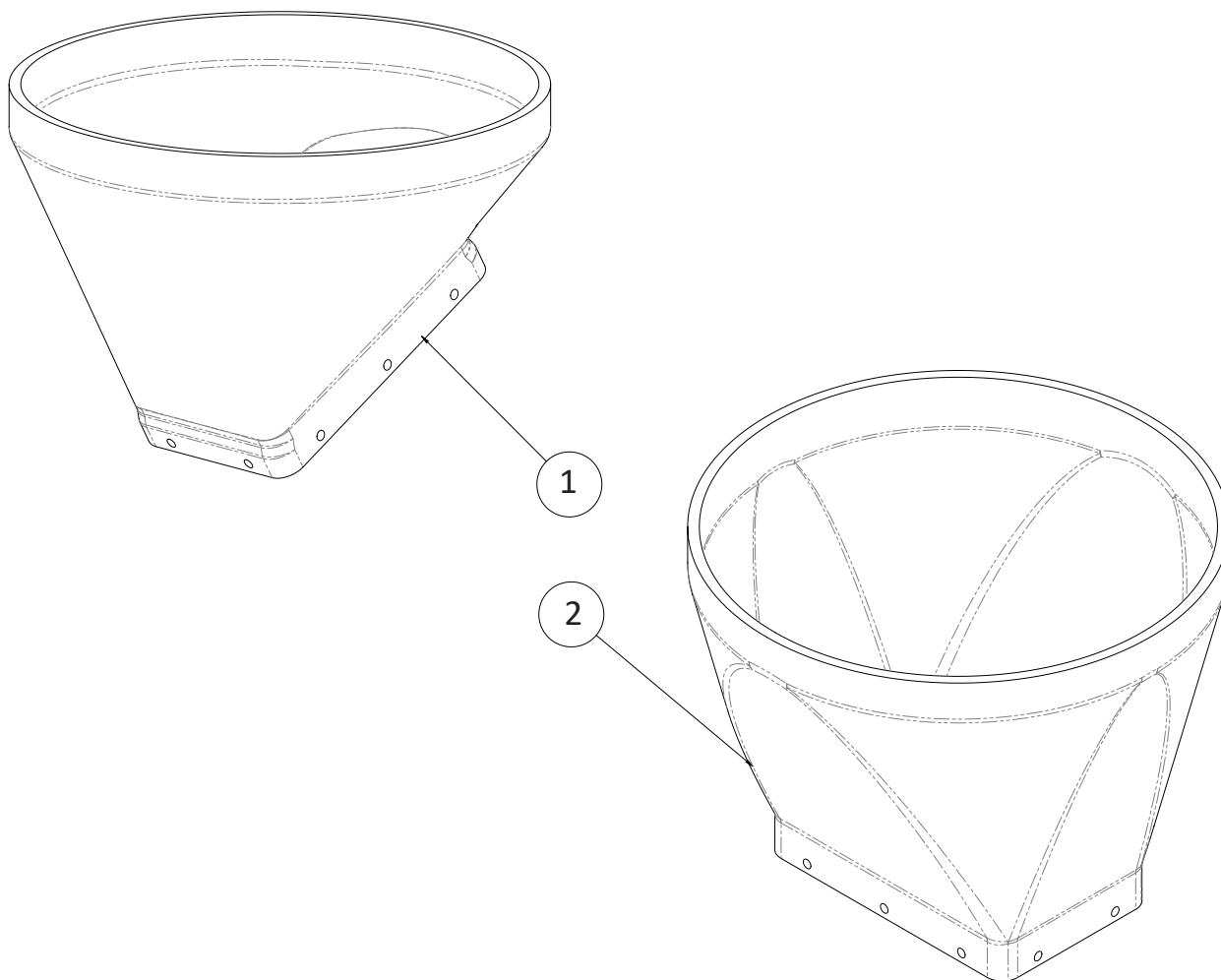
6" Rigid Auger Lower Boot With Slide Valve (706175)

ITEM #	PART #	QTY	DESCRIPTION
6" RIGID AUGER LOWER BOOT WITH SLIDE VALVE - 706175 PARTS LIST			
1	010251	3	1/4" SPLIT LOCK WASHER
2	010602	3	1/4-20 HEX NUT
3	500494	1	SLIDE VALVE HARDWARE BAG
3.1	010603	6	5/16-18 HEX NUT
3.2	010643	6	5/16-18 X 3/4" HEX BOLT
4	500495	1	16" SLIDE VALVE
4.1	012660	1	7/64" X 3/4" COTTER PIN
4.2	500301	1	SLIDE PLATE
4.3	500302	1	SLIDE SHIELD
4.4	500305	1	12" CHAIN
4.5	500306	1	CHAIN RING
4.6	500309	1	TRANSFER PLATE ASSEMBLY
5	704303	1	BOOT DOOR ASSEMBLY
6	706441	1	6" BOOT HOUSING
7	720490	1	ALUMINUM BEARING ASSEMBLY



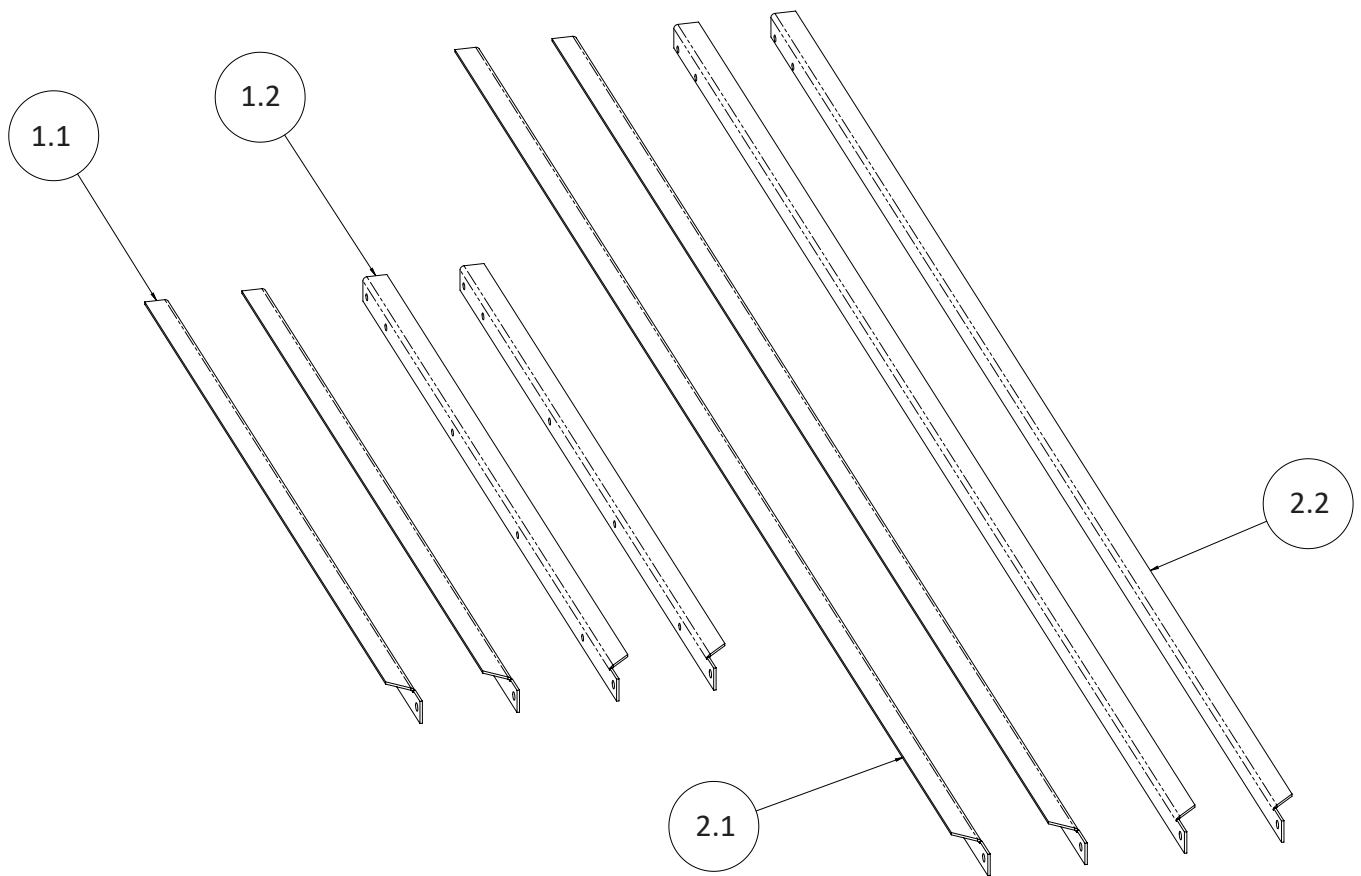
Upper Boot Transitions

ITEM #	PART #	DESCRIPTION
UPPER BOOT TRANSITIONS - PART NUMBERS		
1	500475	30 DEGREE PLASTIC UPPER BOOT TRANSITION - GREEN
	500575	30 DEGREE PLASTIC UPPER BOOT TRANSITION - CLEAR
2	500485	STRAIGHT PLASTIC UPPER BOOT TRANSITION - GREEN
	500585	STRAIGHT PLASTIC UPPER BOOT TRANSITION - CLEAR



Auger Braces & Kits (501965, 501967)

ITEM #	PART #	QTY	DESCRIPTION
AUGER BRACES			
1	501965	1	AUGER BRACE SET FOR AUGERS UP TO 12' LENGTH
1.1	501911	2	TOP AUGER BRACE, SHORT
1.2	501912	2	BOTTOM AUGER BRACE, SHORT
2	501967	1	AUGER BRACE SET (LONG) FOR AUGERS OVER 12' LENGTH
2.1	501909	2	TOP AUGER BRACE, LONG
2.2	501910	2	BOTTOM AUGER BRACE, LONG



Customer Service

My dealer's name:

Street / PO Box _____

City _____

How to contact my dealer:

State / Province _____

Zip / Postal _____

Customer Service
210 E. Main Street
Coldwater, OH 45828
800.998.2526

Phone _____

Fax _____

E-mail _____

Web site _____



North America:

Phone: 800.99VALCO (800.998.2526)
Fax: 419.678.2200
Email: sales@val-co.com

International:

Phone: (+1) 419.678.8731
Fax: (+1) 419.678.2200
Email: intl.sales@val-co.com

