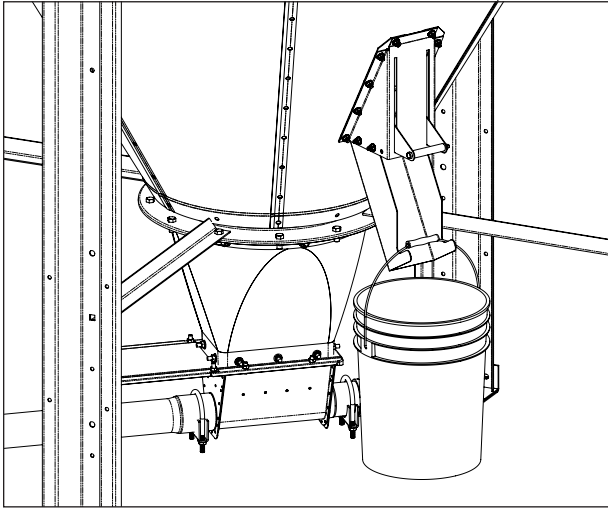




Taper Hopper Slide Valve

500621

Installation Quick Sheet

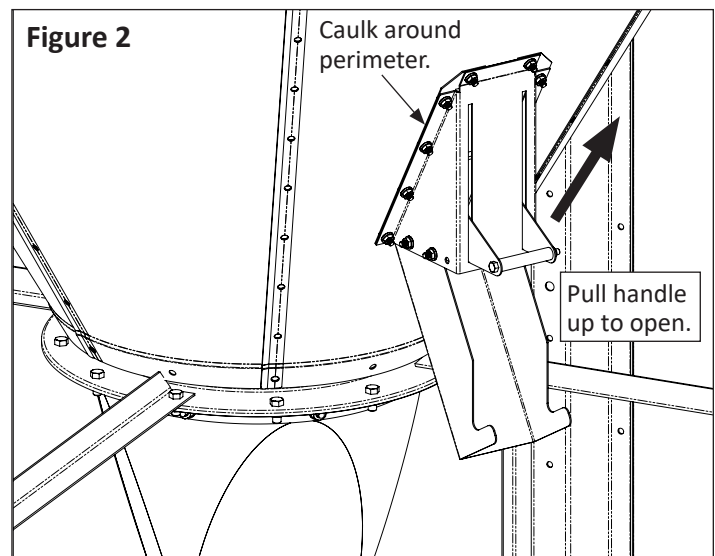
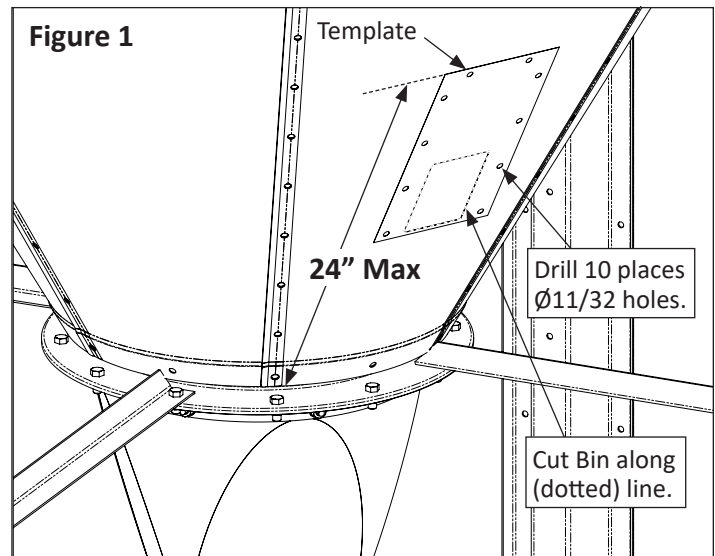


Installation Instructions:

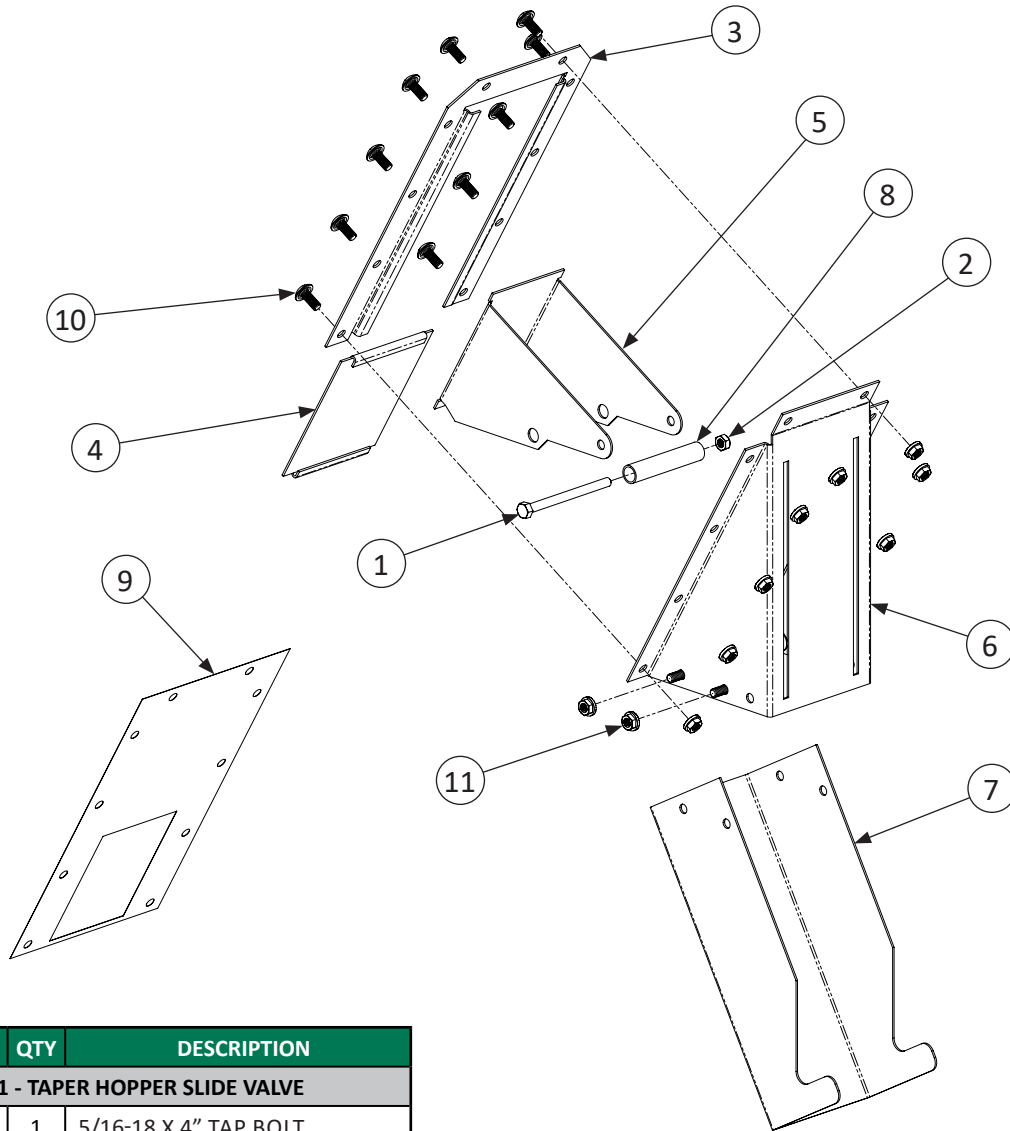
1. Use the supplied Template (500631) to drill holes in an empty Feed Hopper and cut out a rectangular slot to allow the feed to pass through. Locate the top of the Template no more than 24" from the base of the Feed Hopper, as shown in Figure 1.
2. After the holes have been drilled and the rectangular slot has been cut out, assemble the Taper Hopper Slide Valve to the Feed Bin as shown in Figure 2. A detailed, exploded view depicting how the Taper Hopper Slide Valve assembles is shown on the following page. Be sure to caulk between mating surfaces around the perimeter of the Shroud and Side Plate while assembling to the Feed Bin.
3. Once the Taper Hopper Slide Valve has been assembled to the Feed Bin, fill the Feed Bin with feed. Use the Door Handle to access feed, pulling up and out to allow feed to pass through the Chute into a container. Push the Door Handle down to allow it to close. Repeat as necessary to continue filling buckets, carts, or other assorted containers.

The Taper Hopper Slide Valve is designed to enable the manual dispensing of feed from a Feed Bin, to fill buckets, carts, and other assorted containers.

Assembly of Taper Hopper Slide Valve to Feed Bin



Taper Hopper Slide Valve - Exploded View and Parts List



KEY	PART #	QTY	DESCRIPTION
500621 - TAPER HOPPER SLIDE VALVE			
1	010655	1	5/16-18 X 4" TAP BOLT
2	012593	1	5/16-18 THIN NYLOCK NUT
3	500622	1	SLIDE PLATE
4	500623	1	SLIDE DOOR
5	500624	1	DOOR HANDLE
6	500625	1	SHROUD
7	500626	1	CHUTE
8	500627	1	HOPPER VALVE HANDLE
9	500631	1	CUTOUT/DRILL TEMPLATE
10	501440	14	5/16" X 3/4" TRUSS BIN BOLT
11	501441	14	5/16-18 HEX FLANGE NUT

NOTE: The (10) Truss Bin Bolts that assemble to the holes in the Slide Plate are to be assembled with round heads on the inside of the Bin. The 10 bolts secure the Valve Shroud to the Taper Hopper.

North America:

Phone: 800.99VALCO; 800.998.2526

Fax: 419.678.2200

Email: sales@val-co.com

990275

REV [-]

International:

Phone: (+1) 419.678.8731

Fax: (+1) 419.678.2200

Email: intl.sales@val-co.com